

CEC / EAN Update

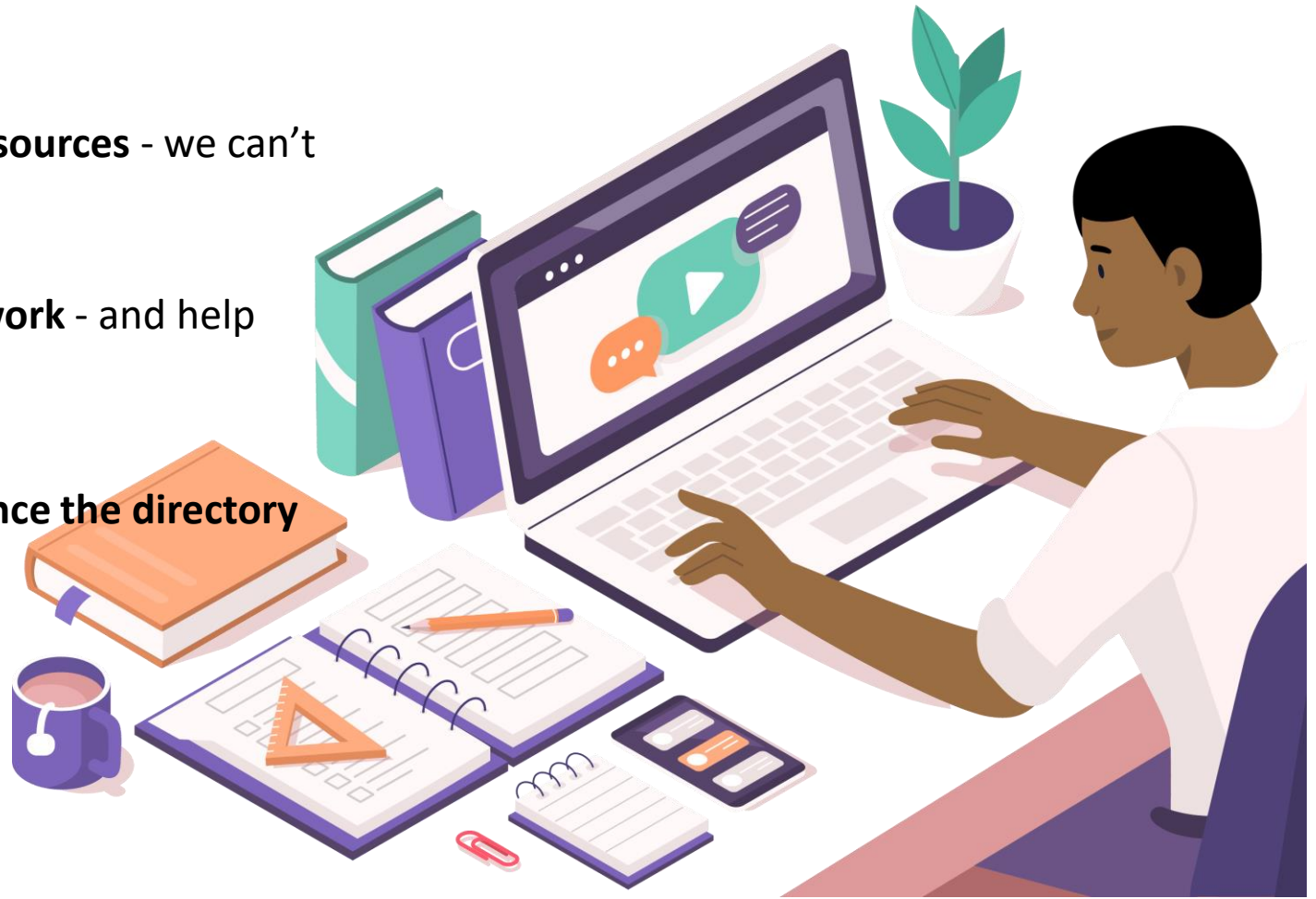


CEC Resource Directory

Search, browse and make the most of our resources - we can't wait for you to get started.

Share the Resource Directory with your network - and help others to make a difference.

Send us your own resources to further enhance the directory
– email us at resourcedirectory@careersandenterprise.co.uk



What can you find in the Resource Directory



Training and development

Supporting Careers Leaders to deliver their school, special school or college's careers provision.



Gatsby Benchmarks

Confidently meet the eight Gatsby Benchmarks.

SEND SEND

Support settings that include young people with SEND.



Employer engagement

Supporting employers to get involved.



Key stages

Open the possibilities with key stage-specific resources.



My Choices

Support pupils during their period of transition in Y11 and Y13.



Recruiting Enterprise Advisers



[Become an Enterprise Adviser](#) | [FAQs](#) | [Register](#) | [Contact](#)



Your experience matters.
Help schools and colleges shape futures

[Become an Enterprise Adviser](#)



Virtual Work Experience Opportunities

- Database of both local and national opportunities
- Categorised opportunities;
 - Virtual Work Experience
 - Inspirational Work Encounters

The screenshot shows a Padlet board with a purple background. At the top, it says 'New Anglia Careers Hub' and '21h'. The main title is 'Virtual Work Experience and Inspirational Work Encounters'. The board is organized into four columns:


- Introduction:** A text box explaining that the database was completed at the request of local Career Leads, working with Norfolk County Council Children's Services. It notes that entries are not endorsed and are recommended based on a guide to scoring online employer engagement in Compass.
- Virtual Work Experience Years 10 and 11:** A section for healthcare opportunities at Norfolk & Norwich University Hospital, involving interactive sessions with NHS professionals.
- Virtual Work Experience Years 12 and 13:** A section for construction opportunities with Morgan Sindall, involving digital challenges and tasks.
- Inspirational Work Encounters Years 10 and 11:** A section for NHS healthcare (nursing) opportunities, including East of England Insights days and Google Classrooms.



Careers and Coffee



Careers & Coffee: Becoming a Supreme Court Justice
Lord Hamblen, Justice of the Supreme Court, The Right Hon Lord Hamblen of Kersey



Careers & Coffee: Meet the Judges

