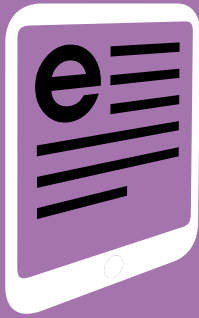


Libraries & Information

POPULATION OF SUFFOLK **738,500**

Comparisons are with our 'Near Neighbour' group of 15 other shire counties. Figures from published CIPFA figures for 2014-15 except where stated.



939,000 items in stock to borrow, including eBooks. 1.2 for every person in Suffolk. 9% more than average

3,285,300 issues

44 libraries

2 in premises shared with schools
3 co-located with Children's Centres
3 mobile libraries

3,106,987 visits

4.2 for every person in Suffolk

88,600 library cards used during the year. Every card is used by an average 1.8 people, making 159,480 users, 21% of the population (1 in 5)



11% of boys
14% of girls have their own library card.

64% of people under 15 are registered library users.



154,793 attendances expected at library events this year.

20% boys, 23% girls, 11% men, 46% women. About 9300 activities expected this year, 50% of which are aimed at children

THE SUMMER READING CHALLENGE **Record Breakers**



8,226 children signed up to take part
130 more than in 2014

59% of them finished all six books

Nearly **90k** library loans were made to participants during the summer and nearly 1,500 signed up as Suffolk libraries members just to take part.

893,353 issues or catalogue enquiries – 1.7 every minute every day

637,533 visits to the Suffolk Libraries website. 1.2 every minute every day



Someone interacts with Suffolk Libraries online every 20 seconds

73% of reserved items are available within 7 days

1,400 people volunteered in Suffolk Libraries



5,345 days of volunteering or work experience offered

995 volunteering activities to help people get (back) into work



21,421 people given assistance to get online

