

ANNUAL PERFORMANCE REVIEW OF 14-19 EDUCATION IN SUFFOLK

June 2005

EXECUTIVE SUMMARY

The purpose of this report is to provide a review of the performance of 14-19 Education and Training in Suffolk. The attached report provides statistical information at both county level and for the 14-19 localities. These thirteen localities have been established to enable a review of current performance across Suffolk and the development of future plans for new models of learning and infrastructure.

The key points of note in relation to 14-19 performance are:

1. Young people in Suffolk achieve well at GCSE level compared to national averages, but there is a need to continue to build on this good performance and extend the range of options for learners at Key Stage 4.
2. Post 16 participation in structured learning has remained low and static for a number of years, although in 2004 there was a small increase in students entering further education (FE). Post 16 participation is a key priority for further work in all localities.
3. Achievement at advanced level study is below the national average both in terms of attainment and progress made by students. A pilot programme of review and support for school sixth forms has been established, with full implementation from September.
4. Success rates in the FE sector in Suffolk declined in 2004 and remain below national benchmarks in three of the four colleges at advanced level and two at foundation level.
5. Apprenticeship success rates for Suffolk are the highest in the Eastern Region at 54%. However participation in apprenticeships is very low.
6. Considerable curriculum development is underway across the county to increase breadth and choice for young people especially at Key Stage 4. This is partly through the ESF funded Greater Opportunities for All Learners (GOALS) Project, but also through a range of other developments (eg two schools working towards training provider status).
7. The locality groups have brought together colleagues from schools, colleges and workbased learning to consider 14-19 provision jointly within their local area using data toolkits and local knowledge. The 14-19 Strategy Group has considered initial responses from the local groups, which include ideas for short and long term development. More detailed plans are due to be completed by the end of November 2005.

BACKGROUND *list any previous relevant paperwork, government publications etc with http links where appropriate*

Suffolk 14-19 Area Wide Inspection Ofsted / ALI Report – April 2004

Suffolk 14-19 Development Plan – September 2004

Government White Paper – 14-19 Education – February 2005

All these documents are available from <http://www.suffolk14-19.org/strategy.htm>

Statistical Review for 14-19 Education and Training May 2005

The purpose of this report is to provide an overview of current performance of 14-19 Education and Training in Suffolk. The review includes national data for benchmarking purposes and where available also provides information for each of the 14-19 localities which have been established to facilitate local planning for the 14-19 phase. The data included in this review is drawn from the following sources:

Section	Sources
Local context	Office of National Statistics, Suffolk Observatory, Suffolk County Council
Key Stage 4	Department for Education and Skills, Suffolk County Council
Post 16 - Activity, participation and progression	Connexions Suffolk, Suffolk Learning and Skills Council
Post 16 - Attainment	Department for Education and Skills, Suffolk County Council, Suffolk Learning and Skills Council

More detailed information about each of the 14-19 localities is available from the relevant locality toolkit. Locality toolkits can be accessed at <http://www.suffolk14-19.org/strategy.htm>

The following table provides information about the 14-19 localities

Locality Name	Covering the following high school catchments	Abbreviation used in data tables	Numerical code
Bury St Edmunds	County Upper, St Benedicts, King Edward VI, Thurston	BSE	1
Felixstowe	Orwell, Deben	FX	2
Haverhill	Samuel Ward, Castle Manor	HV	3
High Suffolk	Thomas Mills, Debenham, Stradbroke, Hartismere	HS	4
Ipswich North & East	St Albans, Northgate, Holywells, Copleston	IpNE	5
Ipswich South & West	Claydon, Thurleston, Westbourne, Chantry, Stoke	IpSW	6
Lowestoft	Kirkley, Sir Benjamin Britten, Denes	LW	7
Mildenhall & Newmarket	Mildenhall, Newmarket	MN	8
North Suffolk	Beccles, Bungay, Leiston	NS	9
Stowmarket	Stowmarket, Stowupland,	ST	10
Sudbury	Sudbury, Great Cornard	SU	11
South Suffolk/ Essex Border	Hadleigh, Holbrook, East Bergholt	SS	12
Woodbridge & Kesgrave	Farlingaye, Kesgrave, also some links with Leiston	WK	13

OUTLINE CONTENTS

The statistical review contains the following sections:

1. Summary information about each locality
2. Achievement data at Key Stage 4
3. Post-16 Participation and Progression Data
4. Achievement data for 16-18 year olds

1. SUMMARY INFORMATION ABOUT EACH LOCALITY

Bury St Edmunds

The Bury St Edmunds area is one of the least deprived in Suffolk. However ward level data indicates pockets of urban deprivation. The population is generally better qualified than the average for Suffolk although there is still a quarter of the population with no qualifications. There is a high level of full time employment with a high proportion of 16-74 year olds (26.4%) in managerial and professional occupations compared with the county average (24.1%).

Felixstowe

Education Skills and Training deprivation in Felixstowe at 19.01 points is close to the Suffolk average of 20.03 points. Employment rates are high in the area although a higher proportion of people are employed in administrative occupations than across Suffolk and less are employed in professional and management roles. School populations in Felixstowe are forecast to decrease by 4.6% between 2004 and 2009 compared with an overall increase of 1.97% across Suffolk.

Haverhill

The Education Skills and Training deprivation for Haverhill is very high (27.06 points) both compared to the Suffolk average and to the multiple deprivation index for the area. Economic activity is higher in the Haverhill area than across Suffolk with 46% of the population aged 16 –74 employed full time (Suffolk: 40.9%). The age profile of the population is skewed towards the younger age groups and there is a projected rise of 4% in the school population over the next 5 years. A low proportion of the population are qualified to level 2 and above compared with Suffolk overall.

High Suffolk

High Suffolk has a low index of multiple deprivation however this masks pockets of significant rural deprivation. A higher percentage of the High Suffolk population is over 30 than in Suffolk as a whole with a greater proportion employed in professional and management occupations than in Suffolk as a whole. High Suffolk has a particularly low percentage (7.7%) of 20-29 year olds (Suffolk: 10.8%).

Ipswich North and East

Ipswich is the 3rd most deprived district in the East of England (from a total of 48). The Ipswich North and East area has a younger age profile than Suffolk as a whole with 39.6% of the population aged under 30 (Suffolk 35.2%). School numbers in the area are forecast to increase more rapidly than the Suffolk average between 2004 and 2009 (main school numbers are forecast to increase by 11.4% (Suffolk 1.1%) and sixth form numbers by 12.6% (Suffolk 5.8%)). Education skills and training deprivation in Ipswich NE (27.31 points) is higher than the Suffolk average of 20.03 points.

Ipswich South and West

Ipswich is the 3rd (out of 48) most multiply deprived district in the East of England with a high concentration of Education Skills and Training deprivation. Levels of economic activity in Ipswich South and West are similar to Suffolk although unemployment is marginally higher. A higher percentage of 16-74 year olds in Ipswich South and West (34%) have no qualifications than across Suffolk (30.3%). Between 2004 and 2009, pupil numbers at Ipswich South and West high schools are forecast to decrease by 6.25%.

Lowestoft

Lowestoft has higher levels of multiple deprivation and education, skills and training deprivation than any other area of Suffolk. The percentage of 16-74 year olds in Lowestoft who are economically active is lower than the average for Suffolk. Four wards in Lowestoft have over 10% of the population in receipt of income support. Over half the population (56%) do not have a qualification at level 2 or above.

Mildenhall & Newmarket

Education Skills and Training deprivation in Forest Heath at 19.9 points is close to the Suffolk average of 20.03 points. Employment rates are high in the area with a strong focus on the skilled and technical occupations. School populations are forecast to increase by 4.3% between 2004 and 2009 although the overall trend is for very local population growth.

North Suffolk

Deprivation indices are close to the Suffolk averages. A lower proportion of the population (21.9%) is in the 0-19 age band compared with Suffolk (24.4%) as a whole and numbers at schools in the North Suffolk area are forecast to decrease by 5.1% between 2004 and 2009 (Suffolk 1.1% increase). The low proportion of economically active residents is balanced by a high proportion of retired people. Employment in skilled trades is high and there are a higher than average proportion of the population without any formal qualifications.

Stowmarket

Levels of deprivation are among the lowest for Suffolk. Stowmarket has a higher percentage of population in full-time work than county and national rates, with a correspondingly lower percentage unemployed. The proportion of the population qualified to level 2 and above is also 4% above local averages. This reflects the relatively high proportion of employment in professional, managerial and technical roles. Projected school numbers 13-19 are forecast to rise to 2009 at a higher rate in Stowmarket locality (5.1%) than elsewhere in Suffolk (1.1%).

Sudbury

Sudbury, with an Education Skills and Training deprivation score of 17.94 points has relatively low levels of deprivation compared with the Suffolk average (20.03 points). Levels of economic activity in Sudbury are at the Suffolk average. A high proportion of people are employed in the skilled trades. The proportion of children and young people in the population of Sudbury is below the Suffolk average.

South Suffolk/Essex border

South Suffolk is one of the least deprived areas of Suffolk. The education skills and training deprivation score for the area is 9.01 (Suffolk 20.03). However, there are small pockets of concentrated deprivation. Economic activity is high with a particular concentration in the managerial and professional occupations. Slightly less than a quarter of those aged 16-74 have no qualifications (Suffolk 30.3%). The demographic profile matches that for Suffolk as a whole.

Woodbridge and Kesgrave

Woodbridge and Kesgrave, with a multiple deprivation score of 8.82 points, is one of the least deprived areas in Suffolk. Levels of economic activity amongst those of working age are higher in Woodbridge and Kesgrave than in Suffolk as a whole with a high concentration of professional and managerial occupations. The qualificatory levels of the population are relatively high. Main school (8.9%) and sixth form (10.4%) numbers are projected to increase at significantly greater rate than in Suffolk as a whole over the next five years (1.1%, 5.8% respectively).

2: ACHIEVEMENT AT KEY STAGE 4

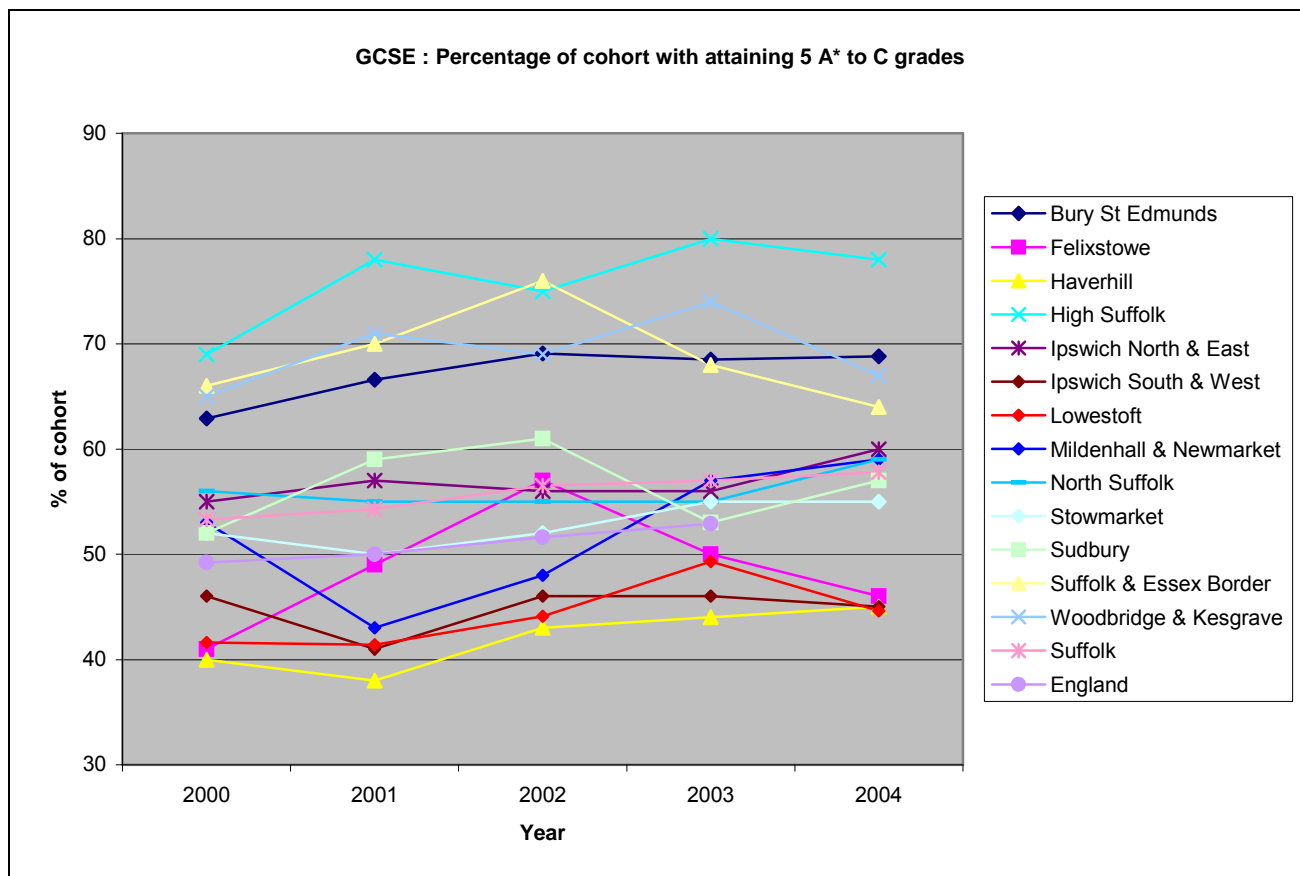
Young people in Suffolk achieve well at GCSE level compared to national averages, but there is a need to continue to build on this good performance and extend the range of options for learners at Key Stage 4.

Value added data cannot be presented on a locality basis due to the use of individual school context within the FFT data.

Percentage of students achieving 5 A* to C grades at GCSE by Locality Group

	2000	2001	2002	2003	2004	Cohort size 2004
Suffolk	53.3	54.3	56.5	57	57.8	
England	49.2	50	51.6	52.9	53.7	
Bury St Edmunds	62.9	66.6	69.1	68.5	68.8	1048
Felixstowe	41	49	57	50	46	334
Haverhill	40	38	43	44	45	325
High Suffolk	69	78	75	80	78	475
Ipswich North & East	55	57	56	56	60	813
Ipswich South & West	46	41	46	46	45	917
Lowestoft	41.6	41.4	44.1	49.3	44.6	783
Mildenhall & Newmarket	53	43	48	57	59	420
North Suffolk	56	55	55	55	59	786
Stowmarket	52	50	52	55	55	488
Sudbury	52	59	61	53	57	545
Suffolk & Essex Border	66	70	76	68	64	426
Woodbridge & Kesgrave	65	71	69	74	67	484

Key	Below the Suffolk Average	Below the Suffolk & the England Average	Above the Suffolk Average by 5% +
-----	---------------------------	---	-----------------------------------

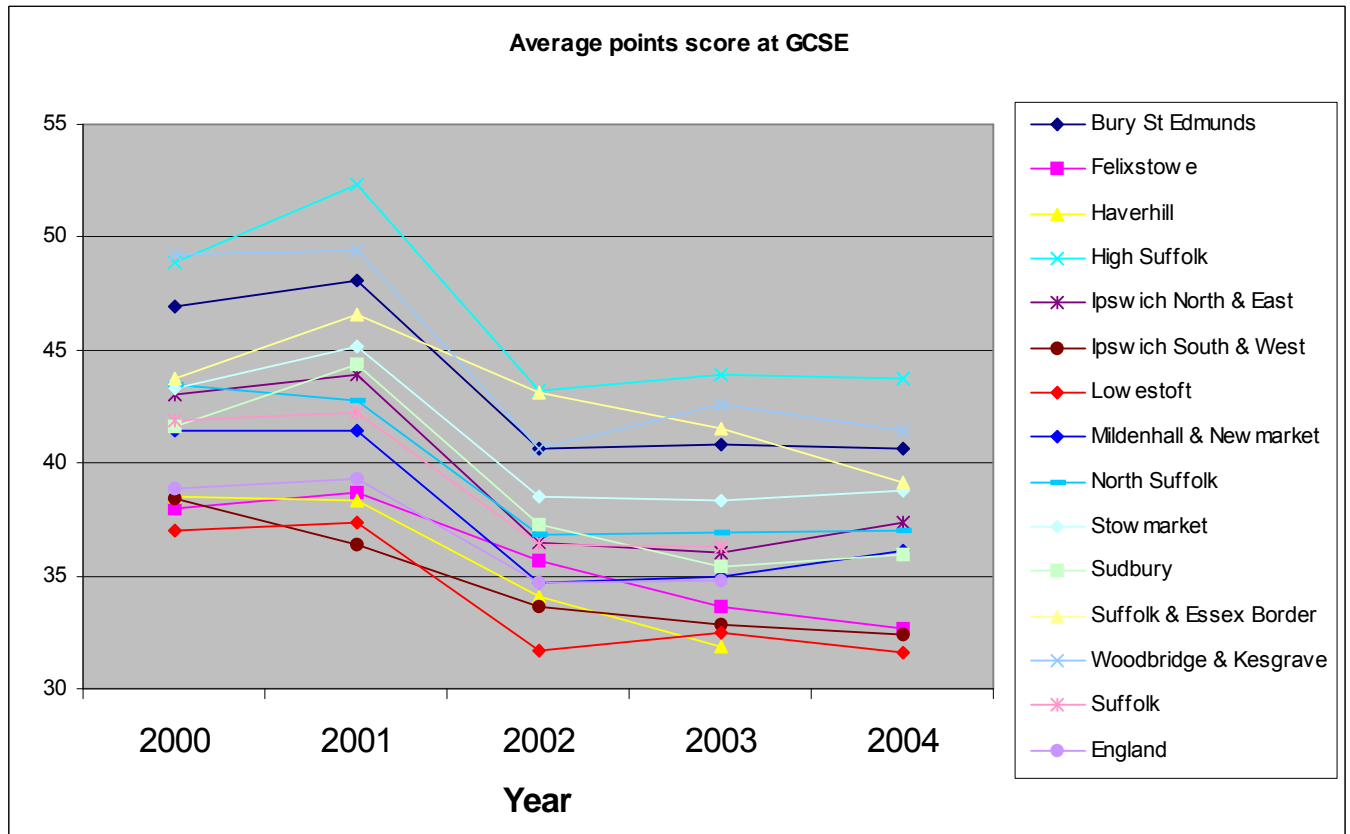


Average point score for GCSE by Locality Group

Year	2000	2001	2002	2003
Suffolk	41.9	42.2	36.4	36.3
England	38.9	39.3	34.7	34.8
Bury St Edmunds	46.9	48.1	40.6	40.8
Felixstowe	38	38.7	35.7	33.6
Haverhill	38.55	38.3	34.05	31.85
High Suffolk	48.9	52.3	43.2	43.9
Ipswich North & East	43.0	43.9	36.5	36.0
Ipswich South & West	38.4	36.4	33.6	32.8
Lowestoft	37.0	37.4	31.7	32.5
Mildenhall & Newmarket	41.4	41.4	34.7	35.0
North Suffolk	43.5	42.8	36.8	36.9
Stowmarket	43.3	45.2	38.5	38.3
Sudbury	41.6	44.4	37.3	35.4
Suffolk & Essex Border	43.7	46.6	43.1	41.5
Woodbridge & Kesgrave	49.2	49.4	40.6	42.6

Key	Below the Suffolk Average		Below the Suffolk & the England Average		Above the Suffolk Average by 4pts +
-----	---------------------------	--	---	--	-------------------------------------

This graph shows average point score at GCSE. From 2002 the Department for Education and Skills used a 'capped GCSE point score' which uses students' best eight GCSE results.



3: POST 16: ACTIVITY, PARTICIPATION AND PROGRESSION

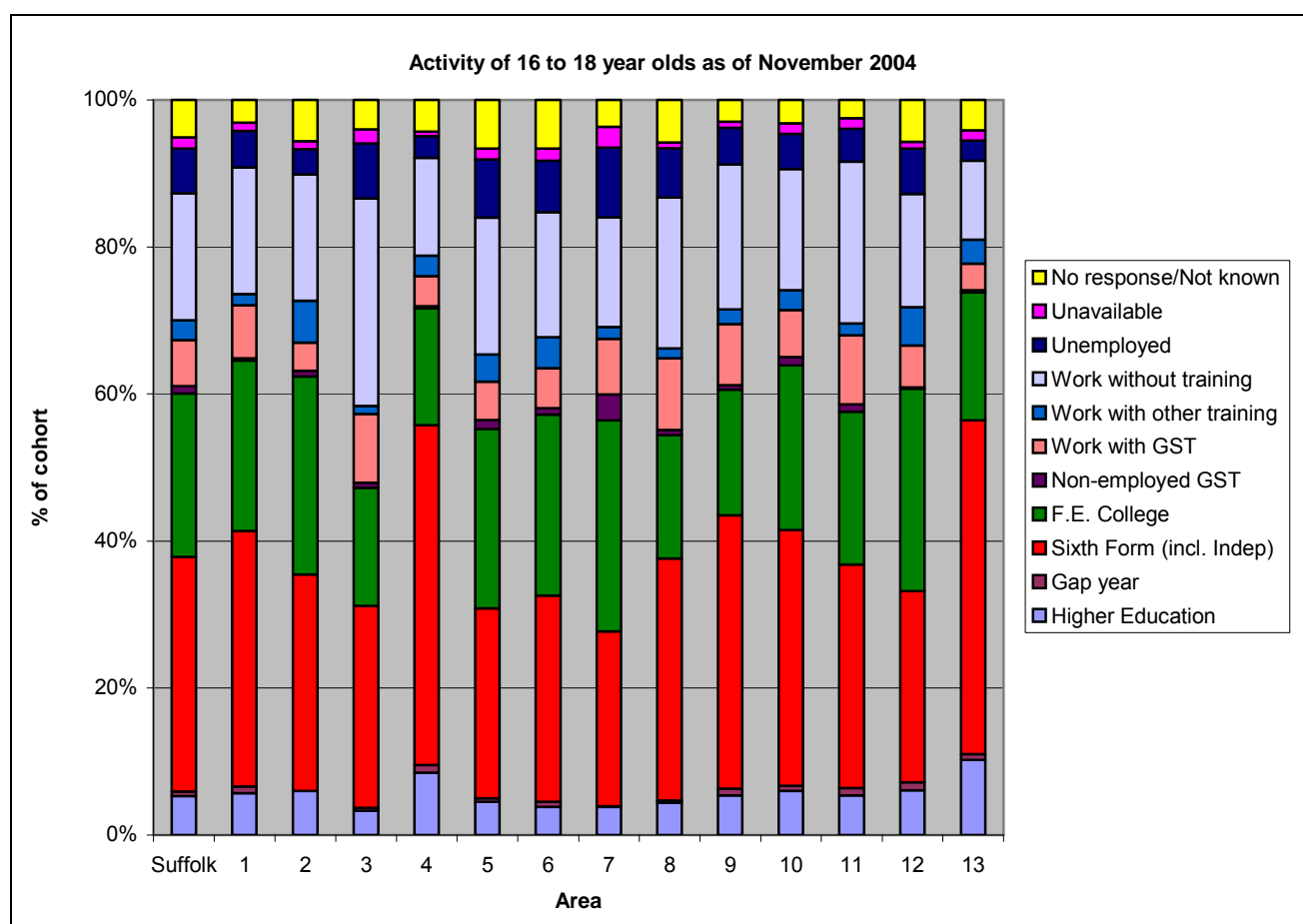
Activity of 16-18 year olds in Suffolk in 2004

The table and graph below categorise 16-18 year olds in the area in terms of activity. Connexions compiled this information based on what was known about activities on November 30th 2004. The information is presented in terms of the categories used in the annual Connexions Activity Survey.

Structured learning includes all activities in the shaded boxes of the table. Suffolk has a target of 86% participation in structured learning by 2010. No locality is currently at this level.

Activity of 16-18 year olds in Suffolk and by Locality Group

	Suffolk	BSE	FX	HV	HS	IpNE	IpSW	LW	MN	NS	ST	SU	SS	WK
Total Cohort	21221	2409	1044	917	1254	1788	2665	2042	1194	1950	2164	1325	805	1619
% in Structured Learning	70.1	72.6	72.6	58.3	78.9	65.4	67.7	69.1	66.3	71.5	73.4	69.6	71.8	81.0
Higher Education	5.3	5.7	6.0	3.3	8.5	4.5	3.8	3.8	4.4	5.4	6.0	5.4	6.1	10.2
Gap year	0.6	0.9	0.0	0.4	1.0	0.5	0.7	0.1	0.3	0.9	0.7	1.0	1.1	0.8
Sixth Form (incl. Indep)	32.0	34.7	29.4	27.5	46.3	25.8	28.1	23.8	33.0	37.2	34.8	30.4	26.0	45.4
F.E. College	22.2	23.2	26.9	16.0	15.9	24.4	24.6	28.7	16.8	17.1	22.4	20.8	27.5	17.4
Non-employed GST	1.0	0.3	0.8	0.7	0.3	1.2	0.9	3.5	0.7	0.6	1.1	1.0	0.2	0.3
Work with GST	6.3	7.2	3.8	9.4	4.1	5.2	5.4	7.6	9.8	8.3	6.4	9.4	5.7	3.6
Work with other training	2.7	1.5	5.7	1.1	2.8	3.7	4.2	1.6	1.3	2.0	2.7	1.6	5.2	3.3
Work without training	17.3	17.2	17.2	28.2	13.3	18.6	17.0	14.9	20.6	19.7	16.5	22.0	15.4	10.7
Unemployed	6.1	5.0	3.4	7.5	3.0	7.9	7.0	9.5	6.7	5.0	4.8	4.5	6.2	2.8
Unavailable	1.5	1.1	1.1	1.9	0.6	1.5	1.7	2.8	0.8	0.8	1.4	1.4	0.9	1.4
No response/Not known	5.1	3.1	5.6	4.0	4.3	6.6	6.6	3.7	5.8	3.0	3.2	2.5	5.7	4.1



More detailed information is available for young people who are at school ages 16-18 regarding their progression:

Destinations at 16 (Yr 11) by school cohorts in Locality Grouping

The table below shows the destinations of those finishing yr11 (2003/4 cohort) at schools within the locality as of November 2004. It generally shows high rates of progression to structured learning, indicating that too many young people drop out of learning aged 16+yrs.

	Suffolk	BSE	FX	HV	HS	IpN E	IpS W	LW	MN	NS	ST	SU	SS	WK
<i>Total cohort</i>	8261	1069	396	375	487	810	994	826	478	707	499	576	415	578
Total into structured learning	83.5	91.1	88.7	82.9	86.2	86.8	86.6	82.2	83.6	82.7	82.8	86.0	86.5	88.6
Sixth form	45.3	52.1	40.2	46.1	58.9	46.9	42.5	38.3	50.6	49.4	40.1	43.9	44.3	58.7
Further Education college	28.8	29.1	36.6	26.4	22.4	27.3	29.4	34.1	20.5	23.9	31.9	31.1	34.0	23.0
Non-employed GST	1.9	0.5	3.5	0.3	0.6	2.5	2.5	3.5	0.8	0.6	2.6	1.9	2.2	1.4
Employed with GST	3.4	4.0	0.8	6.1	1.4	2.3	1.2	3.8	7.7	5.4	2.8	4.9	1.4	1.2
Work with other formal training	4.1	0.9	7.6	4.0	2.9	7.8	5.0	2.5	4.0	3.4	5.4	4.2	4.6	4.3
Work without formal training	5.4	4.5	3.5	7.7	5.7	3.3	7.5	5.1	5.2	7.5	6.4	5.7	4.8	3.3
Unemployed	6.3	4.3	5.1	6.9	3.1	6.5	8.4	6.9	5.6	6.2	6.6	4.9	5.1	4.2
No contact/ no response	4.6	4.6	2.8	2.4	4.9	3.3	3.5	5.8	5.4	3.7	4.2	3.5	3.6	4.0

Progression at 17 for those in School Sixth Forms

The table below shows the progression of those finishing yr 12 at school sixth forms (2003/4 cohort) as of November 2004

	Suffolk	BSE	FX	HV	HS	IpNE	IpSW	LW	MN	NS	ST	SU	WK
Total Cohort	3401	560	132	122	233	509	312	291	190	384	175	201	275
Sixth form	77.9	83.4	62.9	48.4	87.1	83.1	70.2	66.3	59.5	74.5	85.7	77.1	90.2
Further Education college	10.1	7.5	10.6	23.0	6.0	9.8	12.8	17.5	14.7	10.9	9.1	8.0	5.5
Non-employed GST	0.3	0.2	0.8	0.0	0.0	0.6	1.0	1.0	0.5	0.0	0.0	0.0	0.0
Work with GST	0.9	1.6	1.5	4.9	0.4	0.2	0.0	0.7	0.5	1.3	0.0	2.0	0.0
Work with other formal training	3.1	2.3	15.2	13.9	0.0	2.2	2.9	2.7	7.9	2.1	1.1	4.0	1.5
Work without formal training	3.8	2.7	3.8	5.7	2.6	2.4	7.7	5.5	7.9	5.2	1.1	5.5	1.5
Unemployed	1.5	0.5	1.5	2.5	1.7	0.8	2.2	2.4	3.2	2.6	1.1	1.5	1.1
No contact/ no response	2.4	1.8	3.8	1.6	2.1	1.0	3.2	3.8	5.8	3.4	1.7	2.0	0.4

Progression at 18 for those remaining in School Sixth Forms for Year 13

The table and graph below shows the destinations of those finishing yr 13 at schools (2003/4 cohort) as of November 2004.

Percentage figures	Suffolk	BSE	FX	HV	HS	IpNE	IpSW	LW	MN	NS	ST	SU	WK
Total	2557	428	145	86	187	435	169	209	138	266	173	169	206
Higher Education	48.6	47.0	55.2	27.9	51.9	60.0	23.1	42.1	42.0	46.2	43.9	50.3	68.0
Year out	5.4	8.2	2.1	2.3	6.4	6.7	5.3	2.9	2.2	6.4	5.8	7.7	2.4
Sixth Form	4.9	3.5	2.1	10.5	3.2	1.4	9.5	6.2	6.5	6.8	4.6	4.7	1.5
Further Education	8.2	6.8	6.9	10.5	8.6	5.5	14.2	11.0	7.2	8.3	8.7	9.5	7.3
GST Trainees	0.1	0.0	0.7	0.0	0.5	0.0	0.0	0.5	0.0	0.0	0.0	0.0	0.5
Work with GST	1.5	1.6	2.1	3.5	0.0	0.5	1.2	2.9	5.8	1.5	3.5	1.8	0.0
Work with other training	10.8	12.4	20.0	20.9	4.3	11.0	16.0	5.7	12.3	4.1	17.3	10.7	7.3
Work without training	12.6	12.4	2.7	12.8	15.5	9.9	17.2	19.1	8.0	19.5	9.8	7.7	10.2
Unemployed	3.2	3.3	2.7	5.8	3.2	1.8	7.7	5.3	7.2	3.0	1.7	2.4	1.9
No contact / Gone away	4.7	4.9	5.5	5.8	6.4	3.2	5.9	4.3	8.7	4.1	4.6	5.3	1.0

Destination at Year 11 with Learning Disabilities and Difficulties (LDD)

The following table refers destinations for 2003/4 Year 11 students with LDD by locality. The table indicates that there is considerable variability between localities and this is an area requiring future attention to ensure a wider range of opportunities are available.

	Suffolk	BSE	FX	HV	HS	IpNE	IpSW	LW	MN	NS	ST	SU	SS	WK
Sixth form	99	9	6	9	19	10	9	11	2	4	10	7	1	8
Further Education	278	28	18	9	7	31	24	49	7	12	13	19	16	15
Non-employed GST	28	0	2	0	0	2	2	9	2	1	4	3	1	1
Employed with GST	18	2	0	5	2	3	1	2	0	1	1	0	1	0
Work with other training	20	1	2	1	0	2	3	1	1	1	1	1	2	3
Work without training	36	5	1	2	2	2	2	5	0	6	2	2	4	1
Unemployed	67	8	2	7	3	4	3	10	3	6	7	4	2	2
No contact/ no response	39	4	2	2	0	0	1	6	0	2	6	3	0	0
Total	585	57	33	35	33	54	45	93	15	33	44	39	27	30
% in structured learning	75.7	70.2	84.8	68.6	84.8	88.9	86.7	77.4	80	57.6	65.9	76.9	77.8	90

Young people aged 16-18 Not in Education, Employment or Training

A key indicator for progression Post-16 is the proportion of young people Not in Education Employment or Training (NEET). This constitutes a PSA target for Suffolk. The graph below is based on data for those known not to be in education, employment and training as of May 2004. The actual NEET figure may be higher, as the NEET known figure includes only those followed up by Connexions within the three month period prior to May 2004. The Suffolk average figure is 6.38%. The target for 2010 is less than 5.9% NEET population among 16-18 year olds.

Young people aged 16-18 Not in Education, Employment or Training (NEET)

	No. aged 16-18	No. 16-18 NEET	% of cohort NEET
Bury St Edmunds	1851	92	4.97
Felixstowe	753	39	5.18
Haverhill	706	62	8.78
High Suffolk	916	26	2.84
Ipswich North and East	1253	101	8.06
Ipswich South and West	1951	180	9.23
Lowestoft	1562	137	8.77
Mildenhall and Newmarket	871	41	4.71
North Suffolk	1465	81	5.53
Stowmarket	897	43	4.79
Sudbury	1018	48	4.72
Suffolk and Essex Border	546	29	5.31
Woodbridge and Kesgrave	1190	39	3.28

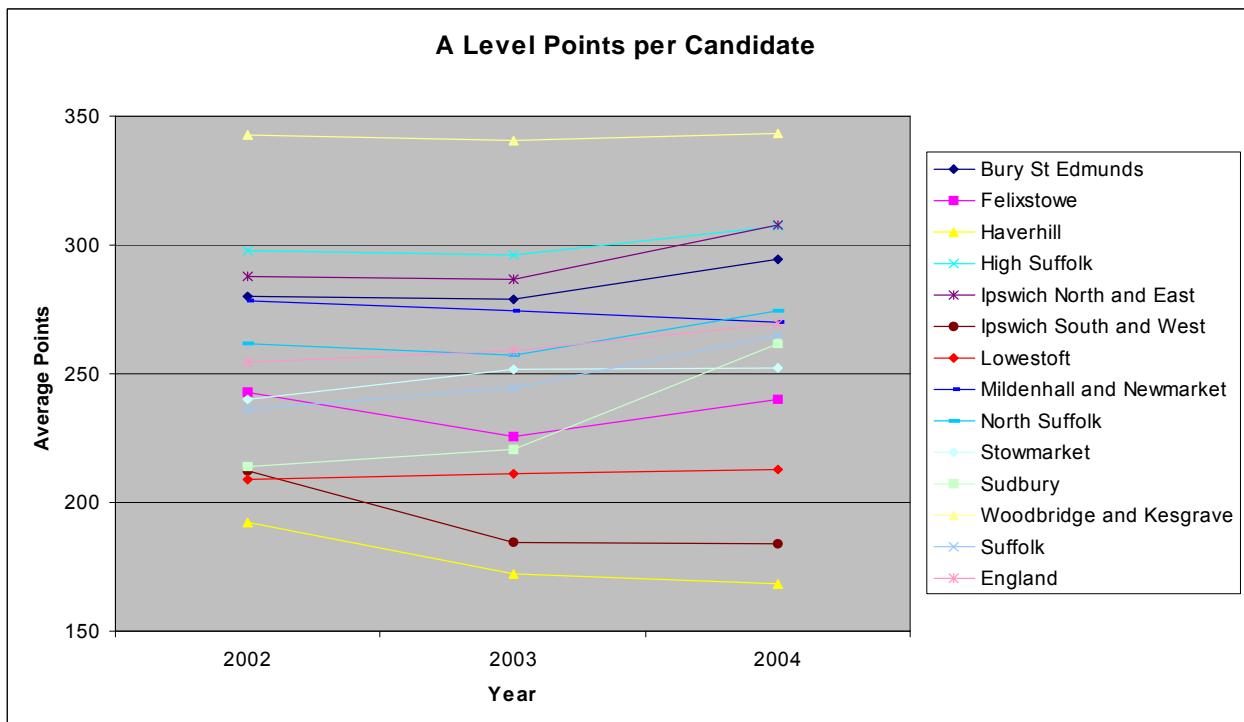
4: POST 16 – ATTAINMENT SUMMARY OF KEY POINTS:

Achievement at advanced level study is below the national average both in terms of attainment and progress made by students. Average points per candidate for Suffolk have improved at a faster rate than the national average over the last three years but still remain below national levels. Performance at points per entry has also improved steadily over the last three years; however it remains below national levels. Suffolk needs to improve this measure by 6.7 points per entry to meet the PSA target of 83 points per entry by 2008.

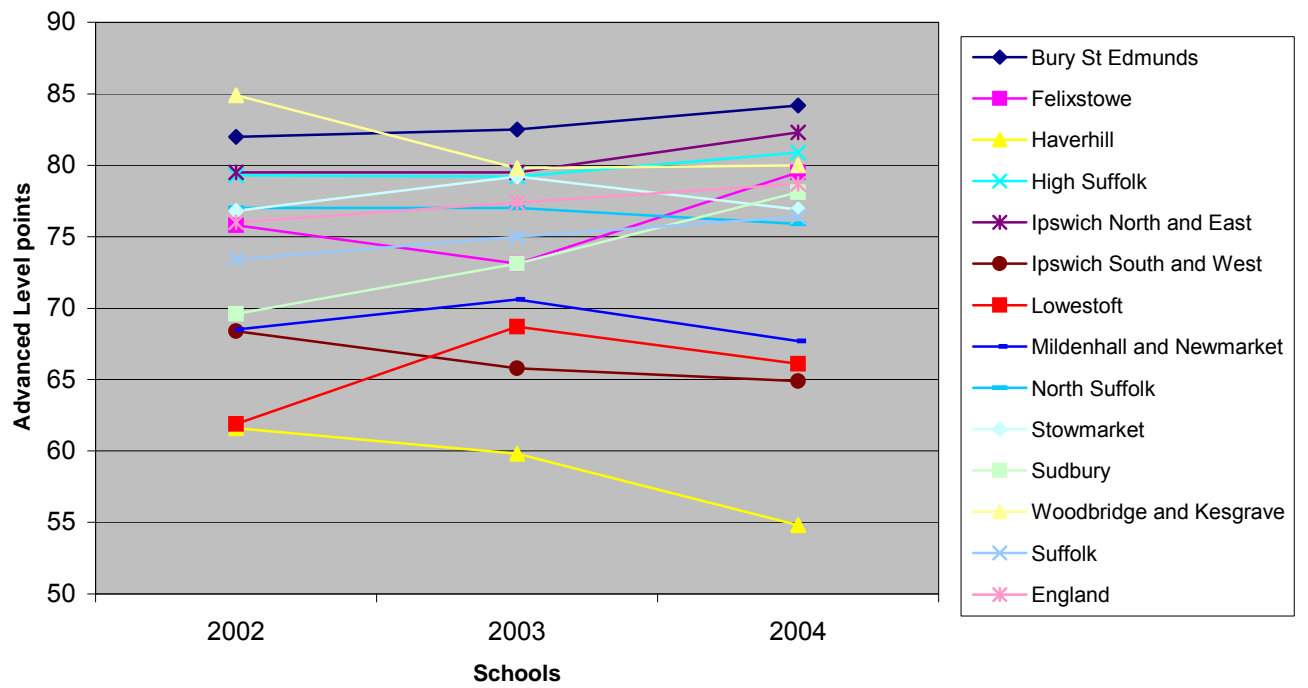
Points score at Advanced Level For School Sixth Forms

	Points per Candidate			Points Per Entry			Cohort size in 2004
	2002	2003	2004	2002	2003	2004	
Suffolk	236.3	244.7	264.9	73.4	75	76.4	
England	254.7	258.9	269.2	76	77.4	78.7	
Bury St Edmunds	279.9	279.1	294.5	82.0	82.5	84.2	424
Felixstowe	242.8	225.3	239.9	75.8	73.1	79.5	84
Haverhill	192.3	172.4	168.6	61.6	59.8	54.8	80
High Suffolk	297.7	296.0	307.0	79.3	79.2	80.9	194
Ipswich North and East	287.6	286.6	307.9	79.5	79.5	82.3	445
Ipswich South and West	212.0	184.7	183.8	68.4	65.8	64.9	166
Lowestoft	208.9	210.9	212.9	61.9	68.7	66.1	192
Mildenhall and Newmarket	278.1	274.2	270.1	68.5	70.6	67.7	126
North Suffolk	261.8	257.3	274.7	77.0	77.0	75.9	251
Stowmarket	239.9	251.9	252.4	76.8	79.2	76.9	169
Sudbury	214.0	220.7	261.5	69.6	73.1	78.1	169
Woodbridge and Kesgrave	343	340.4	343.1	84.9	79.8	80.0	210

Key	Below the England Average		Below the Suffolk & the England Average		Above the Suffolk Average by Per cand. 40 pts+ OR Per entry 80 pts +	
-----	---------------------------	--	---	--	--	--



Average points per entry at Advanced Level



VALUE ADDED DATA AT ADVANCED LEVEL

The EPAS value added data indicates how well students perform at Advanced Level in comparison with how they are expected to perform based on their GCSE results

Average residual scores

The average residual score is the average distance from the national median point for the cohort at the school. The national median point represents average attainment of the national population of young people entered for advanced level qualifications in that year based on prior (Key Stage 4) attainment. A negative average residual score therefore represents attainment below the national cohort.

Advanced level value added data based on progress made from average GCSE points score to advanced level

	Points Per Candidate		
	2002	2003	2004
Bury St Edmunds	-15.5	-11.5	-4.4
Felixstowe	-33.7	-7.5	-23.7
Haverhill	-53.02	-39.36	-52.4
High Suffolk	9.76	-3.57	9.19
Ipswich North and East	-8.23	-1.9	2.45
Ipswich South and West	-47.5	-59.6	-52.9
Lowestoft	-22.07	-33.46	-24.51
Mildenhall and Newmarket	44.4	27.8	14.1
North Suffolk	-0.27	-8	-8.07
Stowmarket	-12.24	-8.05	-19.6
Sudbury	-34.4	-41.5	-17.3
Woodbridge and Kesgrave	44.5	65.5	73.5
Suffolk	-10.92	-11.5	-3.69

This table provides information on the proportion of the cohort within each locality which are performing in the top and bottom quartile for value added.

	% of cohort in lowest 25% nationally			% of cohort in top 25% nationally		
	2002	2003	2004	2002	2003	2004
Bury St Edmunds	29	30	25	17	22	25
Felixstowe	48.6	29.6	35.7	9.3	20.9	14.3
Haverhill	43.1	45.9	49.4	5.9	14.9	2.5
High Suffolk	17.3	22.8	20.1	28.3	23.3	28.0
Ipswich North and East	26.7	23.8	22.5	18.4	22.2	25.5
Ipswich South and West	47	48	49	9	4	9
Lowestoft	36	47	34	14	13	12
Mildenhall and Newmarket	12	16.7	25.2	48	45.8	31.1
North Suffolk	27.7	27.6	28.9	25.7	21.3	22.5
Stowmarket	30.9	25.1	32.7	18.1	22.8	17
Sudbury	39	42	31	9	9	18
Woodbridge and Kesgrave	9.9	6.4	5.3	47.3	57.8	62.5
Suffolk	30	30	27	20	23	24

Attainment at Further Education Colleges

Success rates in the FE sector in Suffolk declined in 2004 and remain below national benchmarks in three of the four colleges at advanced level and two at foundation level. Success rate is calculated using the cohort who achieve the qualification as a proportion of the cohort enrolled, so indicates retention levels as well as pass rates.

Suffolk FE colleges - success rates 2002–2004

Cohort Size	Lowestoft College			Otley College			Suffolk College			West Suffolk Coll.			National benchmark success rates by level		
	2002	2003	2004	2002	2003	2004	2002	2003	2004	2002	2003	2004			
level 1	720	627	655	384	423	670	416	1129	1144	637	797	621			
level 2	1092	776	721	278	182	205	1081	1115	1053	1149	885	835			
level 3	417	376	364	153	127	71	1309	1309	1464	915	935	807			
Achievement Data	2002	2003	2004	2002	2003	2004	2002	2003	2004	2002	2003	2004	2002	2003	2004
success % L1	47	58	57	55	63	49	55	57	45	67	73	75	50	53	56
success % L2	55	63	56	58	44	56	64	57	58	52	61	63	48	50	52
success % L3	49	47	57	41	61	54	61	58	53	54	68	66	53	59	61
Overall success	50	56	57	55	54	51	60	57	53	56	67	68	51	55	57

Key	Below the benchmark <5%		Below benchmark by 5%+		Above the benchmark by 5%+	
-----	-------------------------	--	------------------------	--	----------------------------	--

Attainment In Work Based Learning

Apprenticeship success rates for Suffolk are the highest in the Eastern Region at 54%. However participation in apprenticeships is very low. WBL success rates are the percentages of the WBL leavers that achieved either an apprenticeship framework or an NVQ. To achieve a full framework, students need to achieve NVQ, technical certificate and Key Skills qualifications.

Outcomes for 16-18yr Students on Work Based Learning Programmes in the Area.

Locality	Success Rate
Bury St Edmunds	55%
Felixstowe	49%
Haverhill Total	54%
High Suffolk	54%
Ipswich North & East	46%
Ipswich South & West	44%
Lowestoft	52%
Mildenhall and Newmarket	54%
North Suffolk	40%
South Suffolk	48%
Stowmarket	50%
Sudbury	56%
Woodbridge	50%
Suffolk	50%

Benchmarks for Work Based Learning

Framework completions	41%
Success Rate	54%

Appendix 1 Summary of Progress with 14-19 Locality Discussions Regarding New Models for Learning and Infrastructure in Suffolk

INTRODUCTION

Thirteen local 14-19 planning groups were established in December 2004. The geographical areas covered by each group either match community cluster groups or are an amalgamation of two clusters where this created a more appropriately sized planning area. Each group includes membership from high schools, further education, and training providers. Some groups include middle / primary school and special school / PRU representatives. All groups have officers in attendance from Connexions, the Education Area Office and the 14-19 Strategy Team.

Locality groups have recently submitted their initial proposals (summarised below) for new models for learning and infrastructure within their part of Suffolk to the 14-19 Strategy Group. These are currently under consideration with a response due back to local groups by mid June. Each group has been provided with a set of thresholds for 14-19 Education in Suffolk and a data toolkit which provides a compendium of information about the social economic context of the area, participation in education and training and performance data for their area. Their first task was to benchmark their locality against the thresholds and based on this identify priority aspects for development. Having identified development priorities, each group has been asked to propose the short and long term changes required to achieve the improvements sought to meet the thresholds. Groups have been reminded of the original models paper produced by the 14-19 Strategy Group in April 2004.

These discussions are set within the context of a programme of wide ranging national reform in the 14-19 Phase, set out in the Government White Paper for 14-19 Education (February 2005) which includes the requirement for all young people to have access from 14 years to an additional curriculum of fourteen vocational subjects alongside the existing provision; and a Suffolk 14-19 Area Wide Inspection and LSC Strategic Area Review identifying the need to extend breath and choice 14-19; raise participation and achievement Post-16 and ensure better value for money, particularly in Post-16 provision.

EMERGING MODELS FOR LEARNING AND INFRASTRUCTURE

Local groups are still finalising their ideas and have been asked to put forward options at this stage but a pattern is emerging with local variations around two themes:

- **14-19 Partnerships** – a group of local schools, an FE College and training providers forming a collaborative partnership in order to provide extended choice to young people across a local area. Features include development of shared specialist facilities; co-ordinated timetabling; shared / peripatetic staffing; rationalising offer of minority subjects
- **11-16 Schools with a 16-18 Centre** also providing vocational specialisms from 14 years. This approach is being considered where post-16 achievement is currently poor and there are small numbers of young people dispersed in a number of school sixth forms. It is proposed that the 16-18 centre would be a separate entity but would have strong formal links with the 11-16 schools to enable effective 14-19 provision across the area.

Locality	Group Coverage	Emerging Ideas
Bury St Edmunds	County Upper, St Benedicts, King Edward VI, Thurston	Partnership to deliver 14-19 provision involving College and schools, each provider offering specialist subjects and facilities
Felixstowe	Orwell, Deben	Proposal to merge two existing high schools and create one new centre with enhanced vocational facilities; some post-16 provision, either with focus on particular specialisms and link to Ipswich centre for more general routes or small centre offering complete range
Haverhill	Samuel Ward, Castle Manor	Proposal to create two all age campuses with either integrated or separate 16-18 provision in Haverhill or in the surrounding district but serving Haverhill.
High Suffolk	Thomas Mills, Debenham, Stradbroke, Hartismere	Ideas still under discussion plan due end of June
Ipswich North and East	St Albans, Northgate, Holywells, Copleston	A 14-19 partnership with specialist vocational provision at Suffolk College
Ipswich South and West	Claydon, Thurleston, Westbourne, Chantry, Stoke	11-16 schools with a 16-18 Centre offering vocational provision from 14 at the centre; or a partnership between existing schools to share minority provision post-14/16 in a single centre but retain advanced level teaching in all schools
Lowestoft	Kirkley, Benjamin Britten, Denes	Ideas still under discussion
Mildenhall and Newmarket	Mildenhall, Newmarket	A 14-19 partnership utilising e-learning to access provision beyond the immediate area
North Suffolk	Beccles, Bungay, Leiston	A 14-19 partnership with a vocational centre (possibly Halesworth? to serve the three schools) Possible joint working Post-16
Stowmarket	Stowmarket, Stowupland	A 14-19 partnership with vocational specialisms located at each school and shared across the town
Sudbury	Sudbury, Great Cornard	A 14-19 partnership with vocational specialisms located at each school and shared across the town
Suffolk/Essex Border	Hadleigh, Holbrook, East Bergholt	Ideas still under discussion plan due end of June but likely proposal is a 14-16 partnership with vocational specialisms located at each school and shared across the area
Woodbridge and Kesgrave	Farlingaye, Kesgrave, Leiston	A 14-19 partnership with some shared provision and links into NE Ipswich locality

The above represent a brief overview of the range of initial responses from localities. Many of the ideas need further development and discussion within localities to provide a full proposal of how these developments would enhance provision for learners. This will occur over the next few months.

The Strategy Group is currently developing responses to these, including a consideration of:

- how appropriate each response is given the context of the locality group
- what are the most appropriate responses given the wider county and region picture for 14-19 education and the implications for other phases of education within Suffolk
- how these proposals might collectively represent a coherent development for Suffolk overall

APENDIX 2: PROGRESS REPORT FOR THE 14-19 DEVELOPMENT PLAN – 31 MAY 2005

Plan		Progress	Reason for delay where stated	Long term impact?	Summary of Activity since September 2004
Outcome 1: A high quality broad and balanced curriculum that provides appropriate and personalised learning opportunities for all					
Plan 1.1	Complete a comprehensive curriculum map for Suffolk to inform planning and student choice.	On target following initial delay			<ul style="list-style-type: none"> - Data collection in progress for the map - Most returns received, follow up of those outstanding underway - Web url established – will be launched this summer at GCSE results time www.future4.me.org.uk
Plan 1.2	Provide access to the full Suffolk 14-19 Learning Entitlement for all young people.	On target			<ul style="list-style-type: none"> - Local GOALS activities / funds agreed - Curriculum development guide completed & being uploaded. LSDA project completed - SEN framework under development
Plan 1.3	All Post-16 providers to offer opportunities for learners to achieve communication, numeracy and ICT to Level 2 by the age of 19 leading to improved county success rates in these core skills.	On reprofiled target			<ul style="list-style-type: none"> - Plan reprofiled - Policy draft approved by Consultative group 5 May - Work underway to develop guidance and support for implementation
Plan 1.4	Establish a scheme to increase the proportion of young people able to develop and be accredited with the wider key skills	Not yet due to commence			
Plan 1.5	Extend the range and number of level 1 & 2 programmes available Post-16.	On target following initial delay			<ul style="list-style-type: none"> - Phase 1 pilots underway since September & progressing well with 40 young people - Evaluation of pilots completed - Funding identified for phase 2 pilots
Outcome 2: High quality and impartial information, advice and guidance for all					
Plan 2.1	Establish and implement a Suffolk Standard for Information Guidance and Support.	On target			<ul style="list-style-type: none"> - Initial work commenced to develop new standards - Pilot work with Lowestoft Partnership
Plan 2.2	Agree and implement an information strategy to deliver high quality Information Guidance and Support.	On target			<ul style="list-style-type: none"> - 14-19 Info Strategy Working Group established and making good progress working with AimHigher - Briefings to schools scheduled for June / July re WBL and HE – jointly with AimHigher
Plan 2.3	Develop and implement transitional planning for all young people.	On target			<ul style="list-style-type: none"> - ILP CD completed – on target for distribution June - SEN transition work in progress

Plan 2.4	Implement a programme of activities to raise students' awareness of higher education opportunities and increase the percentage progressing into higher education courses.	Aim Higher Plan delayed by five months	Owing to delayed approval of aimhigher plan and staff recruitment issues.	Yes revisions to Aim Higher plan	<ul style="list-style-type: none"> - Three staff now commenced, - Initial work commenced re mentoring, curriculum map linkage, school staff briefings
Outcome 3: Increased participation and achievement 14-19					
Plan 3.1	Develop a shared system for measuring, evaluating and challenging the success of all Post-16 providers.	On target			<ul style="list-style-type: none"> - Piloting sixth form review making good progress with 11 schools involved - Draft Post-16 SAD developed
Plan 3.2	Establish a programme of targeted intervention to support the least effective providers in raising their Post-16 achievement.	On target			<ul style="list-style-type: none"> - Support for targeted providers with 11 schools. Target WBL providers and Colleges agreed - FE and WBL pilots to commence in July
Plan 3.3	Develop more effective student tutorial programmes in all 14-19 centres.	On target			<ul style="list-style-type: none"> - Draft tutorial entitlement developed - Currently identifying practitioners to contribute to the production of guidance to support entitlement
Plan 3.4	Develop and implement a strategy for workforce development, including the co-ordination of continuing professional development (CPD), in support of the Suffolk Vision and Goals 14-19.	Delayed by 4 months	Owing to lack of capacity in PD team – new staff appointed now	No	<ul style="list-style-type: none"> - Initial planning discussions complete - PD team currently reprofiling the plan
Plan 3.5	Establish a system of data sharing and transfer between providers to support transition.	On target			<ul style="list-style-type: none"> - Initial pilot complete, second larger pilot underway - Briefing re data for all college staff completed - Plans in progress to roll out to wider target group - Issue re pupil ident. Needs to be resolved
Outcome 4: An effective infrastructure which supports high quality local delivery					
Plan 4.1	Review existing County 14-19 structures to provide effective support for the implementation of the plan.	Partial delay	Transport element delayed by 6 months	No	<ul style="list-style-type: none"> - 14-19 issues key priority for county Accessibility Plan - Further discussion with transport teams in progress
Plan 4.2	Develop and implement a sustainable plan to secure and allocate funds coherently in support of the Suffolk Vision and Goals for 14-19.	Delayed by 5 months	Owing to delay in strategy group being able to commence	Yes if not addressed soon	<ul style="list-style-type: none"> - 25 April Strategy Group meeting agreed to establish a working group to meet in June.
Plan 4.3	Develop and implement a Suffolk 14-19 e-learning strategy.	On target			<ul style="list-style-type: none"> - Continuing programme of visits to all providers - Inset activities and e newsletter established - 14-19 website established and currently being populated www.suffolk14-19.org
Plan 4.4	Develop and implement a plan, shared between all partners, to introduce new models for learning and infrastructure in support of the Suffolk Vision and Goals for 14-19.	On target			<ul style="list-style-type: none"> - Final plan for Lowestoft Pathfinder agreed - 10 locality groups responses completed, 3 due by end of June - All groups have locality and comprehensive toolkits