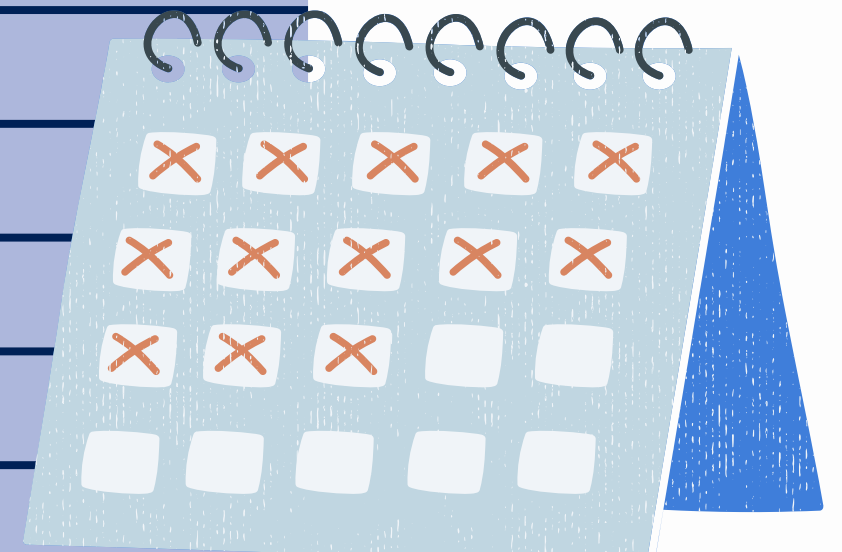
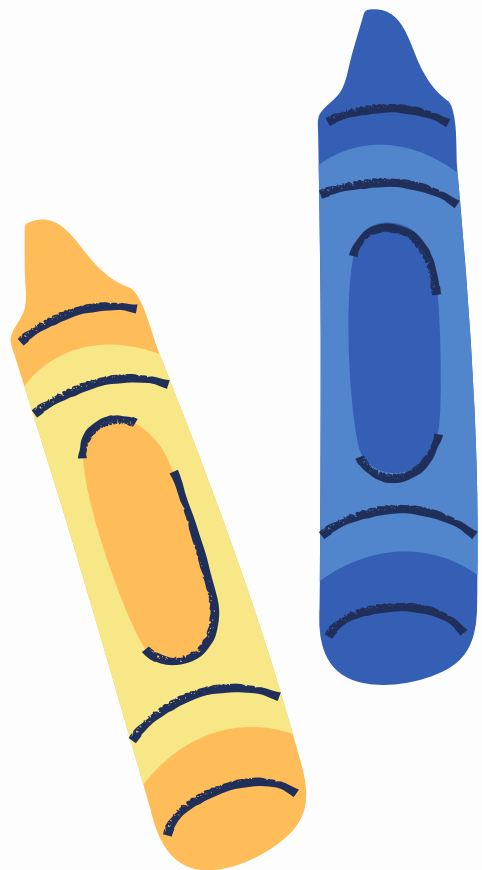


WELCOME TO



My name is

.....

I come from

.....

I speak

.....



Me!

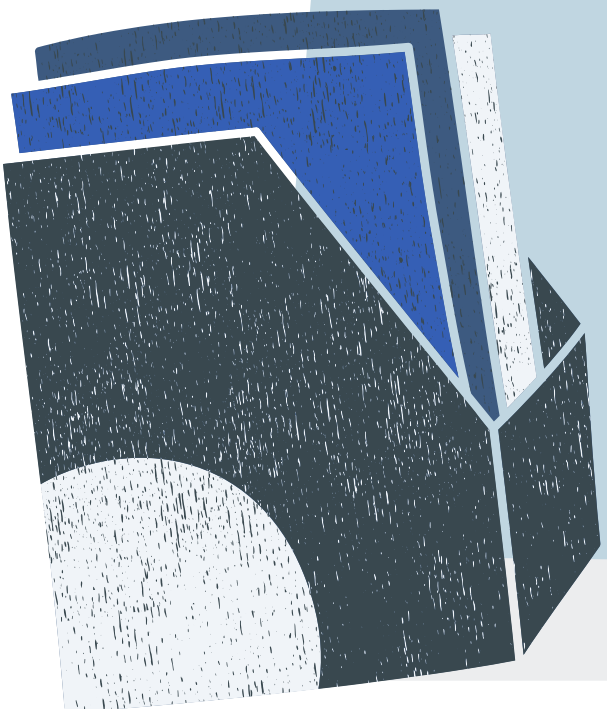


About me





About our school

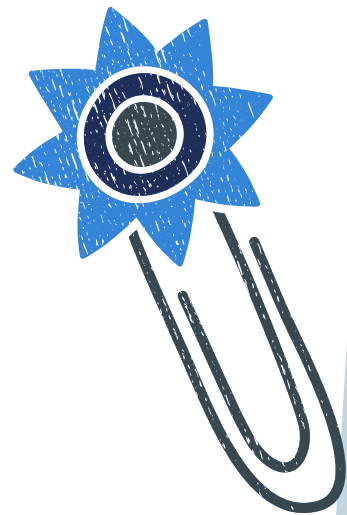


Your class

YOU WILL NEED

- **Equipment (pens, bag, water, snacks etc)**


Your teachers



--	--	--	--



Places to go in school (safe spaces)



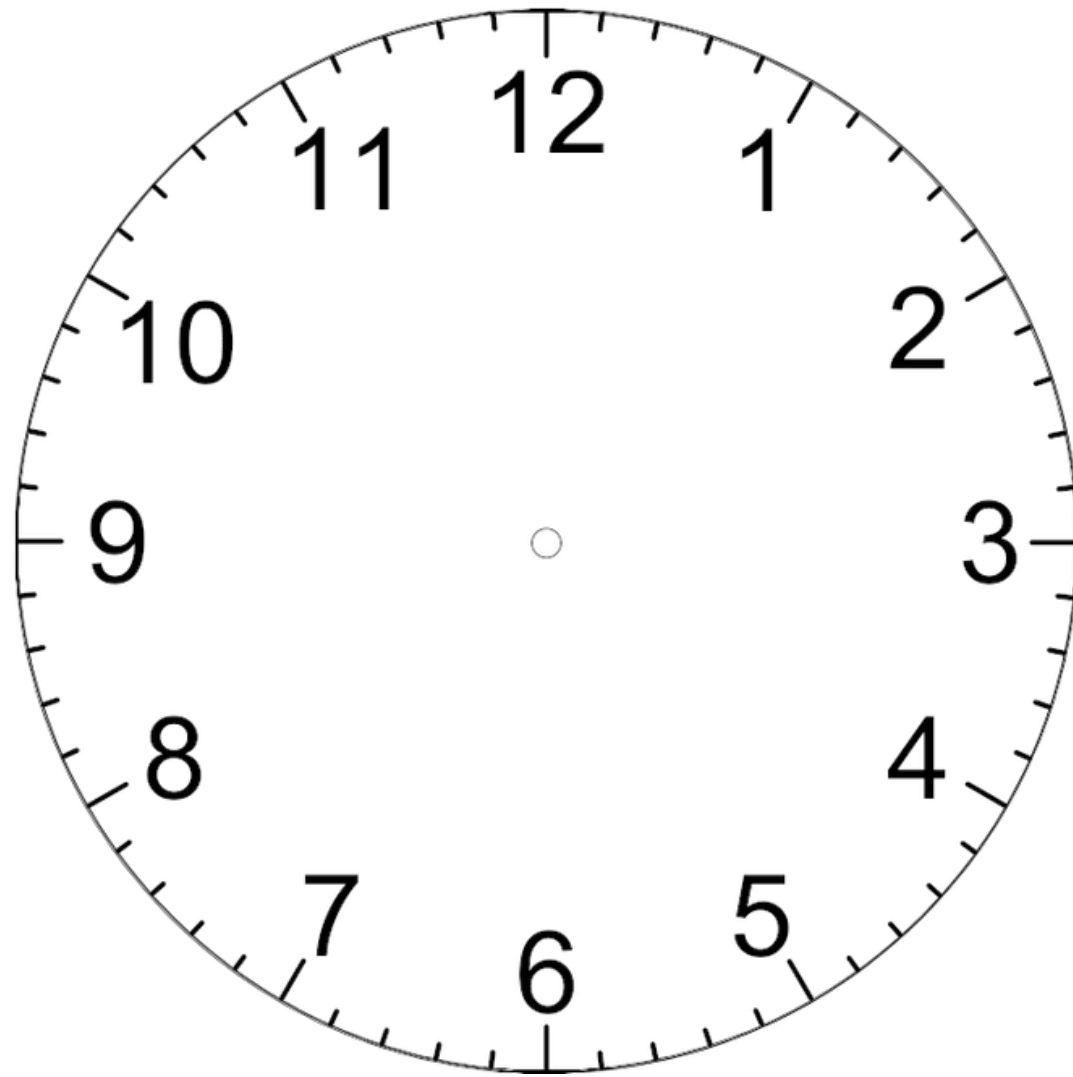
A graphic consisting of a dark blue rounded rectangle containing four white rounded squares arranged in a 2x2 grid. These squares are intended for students to draw or write in, representing safe spaces in school.



Uniform

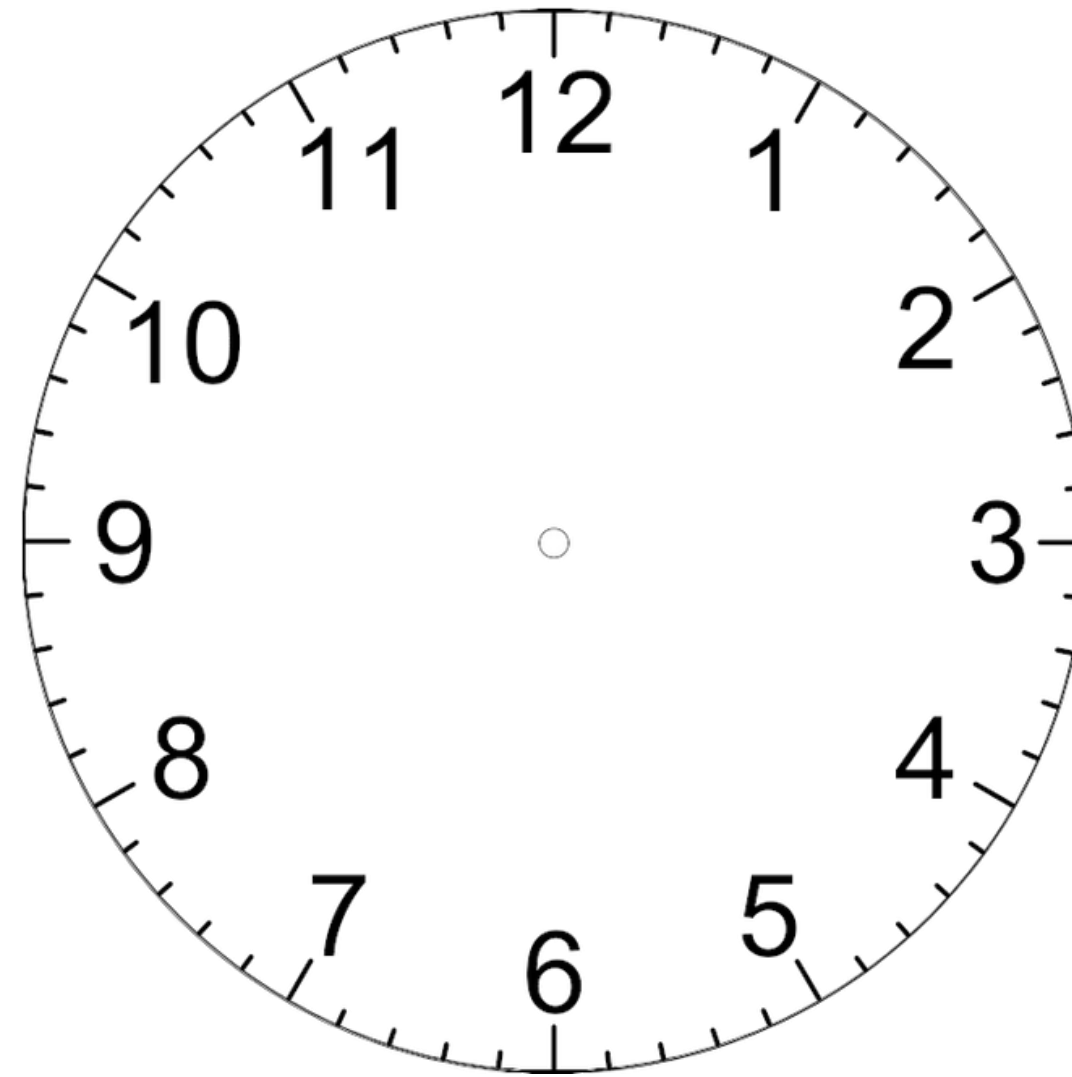


School Day



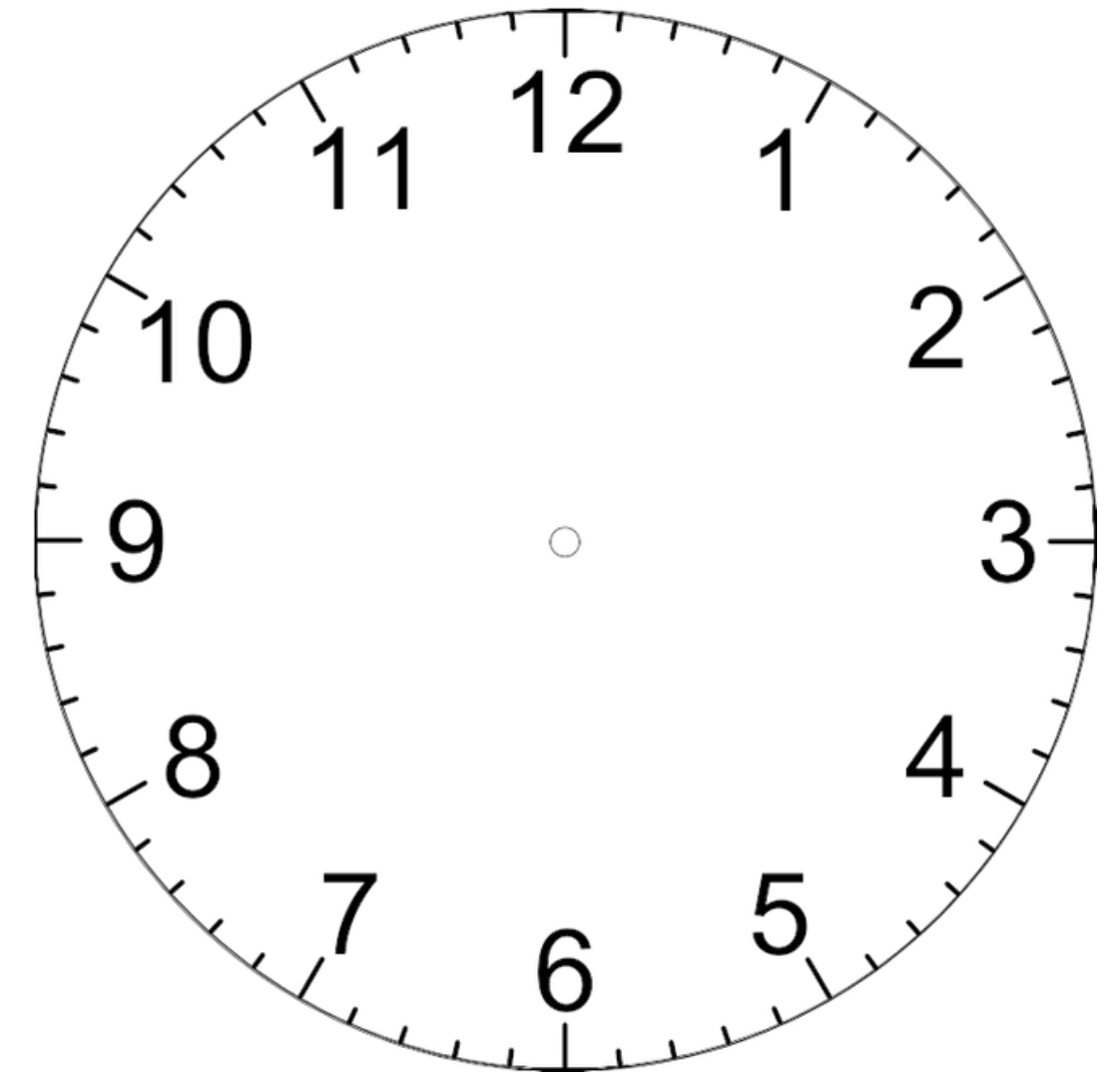
8:00 AM

Arrive at school



12:00 PM

Lunch Time



3:30 PM

School ends

Your Buddy

