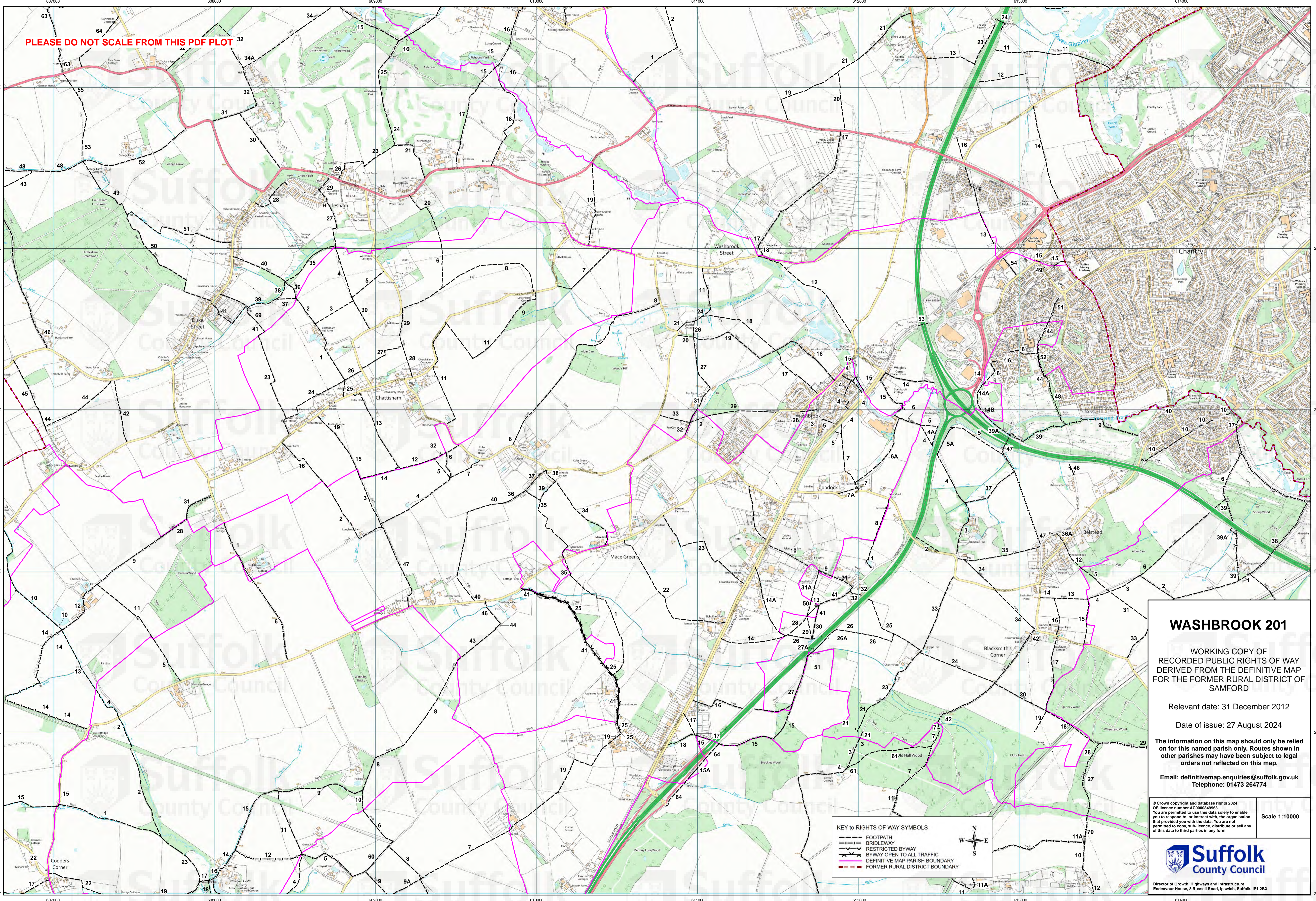


PLEASE DO NOT SCALE FROM THIS PDF PLOT



### WASHBROOK 201

WORKING COPY OF  
RECORDED PUBLIC RIGHTS OF WAY  
DERIVED FROM THE DEFINITIVE MAP  
FOR THE FORMER RURAL DISTRICT OF  
SAMFORD

Relevant date: 31 December 2012

Date of issue: 27 August 2024

The information on this map should only be relied on for this named parish only. Routes shown in other parishes may have been subject to legal orders not reflected on this map.

Email: [definitivemap.enquiries@suffolk.gov.uk](mailto:definitivemap.enquiries@suffolk.gov.uk)  
Telephone: 01473 264774

- KEY TO RIGHTS OF WAY SYMBOLS
- FOOTPATH
  - BRIDLEWAY
  - RESTRICTED BYWAY
  - BYWAY OPEN TO ALL TRAFFIC
  - DEFINITIVE MAP PARISH BOUNDARY
  - FORMER RURAL DISTRICT BOUNDARY



Scale 1:10000

© Crown copyright and database rights 2024  
OS licence number AC000049963  
You are permitted to use this data solely to enable you to respond to, or interact with, the organisation that provided you with the data. You are not permitted to copy, sub-licence, distribute or sell any of this data to third parties in any form.

Director of Growth, Highways and Infrastructure  
Endavour House, 8 Russell Road, Ipswich, Suffolk, IP1 2BX.