

Infrastructure Funding Statement

2022/23

DECEMBER 2023



Summary

This document, prepared by Suffolk County Council (SCC), is the fourth Infrastructure Funding Statement (IFS) published since the requirement to do so was confirmed in September 2019, when changes were made to the CIL Regulations, the Community Infrastructure Levy (Amendment) (England) (No. 2) Regulations 2019.

The first SCC IFS was published in December 2020 and covered the period 1st April 2019 to 31st March 2020, as well as all secured, received, and unspent section 106 money from previous years. The second IFS was published in December 2021, and third published in December 2022.

An IFS provides a summary of all financial and non-financial developer contributions relating to section 106 Legal Agreements (s106), and the Community Infrastructure Levy (CIL) received by SCC for the reporting year.

The information provided within this document relates to all the new activity in the reporting year, for the period 1st April 2022 to 31st March 2023.

This statement also provides information on infrastructure projects delivered by SCC.



Bungay High School expansion



Foxhall Recycling Centre - same level recycling access

The below table provides a summary of the amounts of money reported within this statement (in bold), together with the amounts reported in the IFS of previous years.

Description	Financial Year 2022/23	Financial Year 2021/22	Financial Year 2020/21	Financial Year 2019/20
Money <u>secured from new S106 agreements</u> during the specified financial year	£28,810,276.40	£91,000,760.25	£13,498,502	£46,626,990
Money <u>received from new/existing S106 agreements during the specified financial year</u> , and which is allocated but not spent	£11,122,279.12	£13,063,928.63	£10,120,820	£11,961,647
Money <u>received from new/existing S106 agreements in any year</u> , and which is allocated but not spent (i.e., the cumulative amount received, allocated to projects which will be spent in upcoming years)	£33,903,275.78	£31,670,400	£28,613,410	£25,643,733
Money <u>spent</u> on projects during the specified financial year	£5,663,537.39	£9,275,243.37	£8,724,239	£7,306,290
Unallocated s106 funds (i.e., the money is allocated as it is received)	£0	£0	£0	£0
Money <u>received</u> during the specified financial year <u>for the monitoring</u> of the s106 agreements	£28,112	£39,589	£28,942	£5,912

Table of Contents

1. Introduction	5
2. Developer Contributions	8
3. s106 Contributions.....	13
4. Infrastructure projects delivered by SCC	21
5. Community Infrastructure Levy	31
6. Appendices.....	33
Appendix 1 - All-new section 106 agreements entered in 2022/23.....	34
Appendix 2 – Contributions secured through section 106 agreements entered into during 2022/23 – set out per trigger amount.	36
Appendix 3 – Section 106 contributions spent in the reporting year.....	43
Appendix 4 – Money received under any planning obligations which was allocated by the authority but not spent during the reporting year.....	55
Appendix 5 – Section 278 Agreements.....	70

Section 1.

Infrastructure Funding Statement

2022/23

DECEMBER 2023

1

Introduction

1. Introduction

- 1.1 An infrastructure funding statement (IFS) is a statutory document that must be published each year by a “contribution receiving authority”. A contribution-receiving authority is any authority that issues a community infrastructure levy (CIL) liability notice or receives money or works in kind from a section 106 agreement.
- 1.2 The requirement to publish an IFS originated from the changes made to the CIL Regulations, The Community Infrastructure Levy (Amendment) (England) (No. 2) Regulations 2019 (<https://www.legislation.gov.uk/ukxi/2019/1103/regulation/9/made>) in September 2019. Paragraph 121A of Part 10A ‘Reporting and monitoring on CIL and planning obligations’, requires that:

‘(1) no later than 31st December in each calendar year, a contribution receiving authority must publish a document (“the annual infrastructure funding statement”) which comprises the following—

(a) a statement of the infrastructure projects or types of infrastructure which the charging authority intends will be, or may be, wholly or partly funded by CIL (other than CIL to which regulation 59E or 59F applies) (“the infrastructure list”);

(b) a report about CIL, in relation to the previous financial year (“the reported year”), which includes the matters specified in paragraph 1 of Schedule 2 (“CIL report”);

(c) a report about planning obligations in relation to the reported year, which includes the matters specified in paragraph 3 of Schedule 2 and may include the matters specified in paragraph 4 of that Schedule (“section 106 report”).

(2) The first annual infrastructure funding statement must be published by 31st December 2020.

(3) A contribution receiving authority must publish each annual infrastructure funding statement on its website.

(4) Nothing in paragraph (1) requires a contribution receiving authority to include in its annual infrastructure funding statement any information in relation to CIL which it collects on behalf of another charging authority.

(5) In this regulation, “contribution receiving authority” means -

(a) any charging authority which issues a liability notice during the reported year;

(b) any local planning authority (within the meaning in section 1 of the Town and Country Planning Act 1990 as that section has effect subject to sections 2 to 9 of that Act) to which a sum is required to be paid under a planning obligation, entered into during the reported year, or which will receive a non-monetary contribution under the obligation.’

1.3 The information that is published in an IFS differs from authority to authority. As SCC is not a CIL Charging Authority¹, its duty is to report on one of the three components set out in the regulations relating to section 106 contributions. However, this document also includes CIL funding that has been awarded to SCC from either Babergh District Council, East Suffolk Council or Mid Suffolk District Council.

1.4 Throughout this document, there are references to the following definitions:

- **Secured** – the total amount of money to be provided under any planning obligations which were entered into during the reported year. These contributions may not have been received, and if the planning applications are not implemented, they will never be received.
- **Received and allocated** – the total amount of money under any planning obligations which was received during the reported year. Contributions are assigned a local financial code that is unique to each contribution.
- **Spent/Delivered** – the total amount of money (received under any planning obligations) that was spent by the authority (including transferring it to another person to spend). The contribution has been ‘drawn down’ by the service.
- **Total amount of money** – the total amount of money (received under any planning obligations) that was allocated but not spent during the reported year for funding infrastructure.
- **Reporting Year** – unless stated otherwise, this refers to the period 1st April 2022 – 31st March 2023.

¹ *Suffolk County Council is the Community Infrastructure Levy ‘collecting authority’ as defined by CIL regulation 10 in respect of development for which it grants planning permission. Development that SCC as the Local Planning Authority for decision making include minerals, waste and education development which are not currently the subject of the districts CIL charging schedules and are considered zero (£) rated.*

Section 2.

Infrastructure Funding Statement 2022/23

DECEMBER 2023

2

Developer Contributions

2. Developer Contributions

2.1 Section 106 Agreements and Planning Obligations

2.1.1 Planning obligations can be secured through a section 106 agreement or a unilateral undertaking, depending on the nature of the development. A unilateral undertaking is a simplified version of a planning agreement and is entered into by the landowner and any other party with a legal interest in the development site. A section 106 agreement, on the other hand, is a more complex legal agreement that can be attached to a planning permission to mitigate the impacts of development.

2.1.2 Planning obligations can only be sought where they meet the three legal tests under Regulation 122(2) of the CIL Regulations and set out within paragraph 57 of the National Planning Policy Framework (NPPF) [September 2023]:

- a) Necessary to make the development acceptable in planning terms;*
- b) Directly related to the development; and,*
- c) Fairly and reasonably related in scale and kind to the development*

2.1.3 The Council's expectations for s106 planning obligations are set out in the [Developers Guide to Infrastructure Contributions in Suffolk](#) [currently in the process of being updated].

2.1.4 S106 obligations can be infrastructure contributions provided on-site, for example, through the delivery of land for a new school or off-site in the form of financial payments. Also included are Section 111 agreements of the Local Government Act 1972 where they include developer contributions.

2.2 Community Infrastructure Levy (CIL)

2.2.1 In contrast to s106 obligations, the Community Infrastructure Levy (CIL) is a fixed rate charge that district or borough councils can levy on new development in their area to off-set the impacts of additional homes and businesses on infrastructure such as health, schools, libraries, and waste facilities to support the delivery of sustainable growth. CIL monies can be used to fund the provision, improvement, replacement, operation, or maintenance of infrastructure to support the development of the area.

2.2.2 CIL rates are set out via a published Charging Schedule, and the following councils in Suffolk have implemented a CIL:

- Babergh District Council;
- East Suffolk Council (covering the former Suffolk Coastal and Waveney areas); and
- Mid Suffolk District Council.

2.3 Relationship between local planning authorities and SCC for s106 and CIL

- 2.3.1 Where a local planning authority (LPA) has adopted a CIL Charging Schedule, the way in which infrastructure providers seek developer contributions changes. Projects which may have previously been funded by planning obligations in s106 agreements might now be funded via the CIL mechanism.
- 2.3.2 Except where charging authorities expect specific projects or types of infrastructure to be wholly or partly funded by CIL, SCC will continue to use s106 to seek planning obligations on behalf of its service areas to mitigate the impacts of development on local communities.

2.4 Section 278 Highway Agreements

2.4.1 Additional legal agreements that can fund infrastructure are section 278 highway agreements (s278). These are legally binding agreements made under the Highways Act 1980 between SCC as the Local Highway Authority and developers; s278 agreements are required to secure alterations or improvements to the public highway.

2.4.2 As referred to in the introduction, the CIL Regulations (as amended 2019) sets out the requirements in respect of the IFS. Schedule 2² of the regulations sets out the 'Matters to be included in the annual infrastructure funding statement'. Under Schedule 2, paragraph 4, the regulations state:

'4. The matters which may be included in the section 106 report for each reported year are —

- (a) summary details of any funding or provision of infrastructure which is to be provided through a highway agreement under section 278 of the Highways Act 1980, which was entered into during the reported year,*
- (b) summary details of any funding or provision of infrastructure under a highway agreement which was provided during the reported year.'*

2.4.3 The above regulation is a recommendation to include s278 data rather than a requirement, but SCC has provided this information in Appendix 5. Notable schemes include: improvements to School Road and associated footway works at Elmswell, a new roundabout junction on Castleton Way to serve residential development at Eye, and carriageway widening and footway works on Poplar Lane at Sproughton.

2.5 Forecasting

2.5.1 National guidance suggests that councils should consider reporting on estimated future income where possible. SCC's monitoring database is used to track applications for planning permission and record developer contribution

² Community Infrastructure Levy (Amendment) (England) (No. 2) Regulations 2019, Schedule 2 (web link: <https://www.legislation.gov.uk/ukxi/2019/1103/schedule/2/made>)

requests. SCC will look at incorporating forecasting of developer contributions in the IFS for future reporting years.

2.6 Borrowings

2.6.1 SCC, from time to time, borrows money to forward fund infrastructure projects. In those cases, SCC will look to retrospectively recover the infrastructure investment made through s106 and/or CIL bids.

2.6.2 In April 2019 (updated in August 2023), the Government, through the Department for Education (DfE), published a document to guide education and planning authorities with seeking developer contributions for new education facilities to support housing growth: *‘Securing developer contributions for education.’*³

2.6.3 Paragraphs 13, 14, 15 and 16 of this document refer to forward funding:
“13. While Basic Need capital allocations and other DfE capital funding such as the High Needs Provision Capital Allocations can be used for new school places that are required due to housing development, we would expect this to be the minimum amount necessary to maintain development viability, having considered all infrastructure requirements. When you have a reasonable expectation of developer funding being received for school places based on relevant reports and evidence, you should be in a strong position to secure these places through developer contributions when individual proposals come forward. Basic Need and other DfE capital funding should not be considered available in these circumstances”;

“14. When education facilities must be provided in advance of developer contributions being received (for instance, due to viability constraints), local authorities can make use of borrowing powers, including borrowing from the UK Infrastructure Bank or the Public Works Loan Board, capital reserves or other local authority funds. We recognise the inherent risks with forward funding, and it is always preferable for developer contributions to be secured upfront wherever possible, though circumstances will vary among local authorities.”;

“15. When school places have been forward funded, you can secure developer contributions to recoup the monies spent, including interest, fees, and expenses as well as the principal sum spent. Where this model is envisaged, we recommend that you engage with the local planning authority before forward funding occurs to ensure they support this approach. The CIL Regulations prohibit borrowing against future CIL receipts, so this method of forward-funding only applies to planning obligations at present.”; and

³ ‘Securing developer contributions for education’, August 2023, Department for Education (web link:

https://assets.publishing.service.gov.uk/government/uploads/system/uploads/attachment_data/file/1176845/Securing_Developer_Contributions_for_Education.pdf

“16. Local authorities can also bid for funding under government grant programmes as they become available, while developers delivering schools directly as an ‘in kind’ contribution may be eligible for loan funding from Homes England, allowing a new school to be delivered at an earlier stage in the development than would have been possible otherwise.”

2.6.4 Schedule 2 (‘Matters to be included in the annual infrastructure funding statement’) of the CIL Regulations (as amended 2019), paragraph 1(g) refers to:

*‘(g) in relation to CIL expenditure for the reported year, summary details of—
(ii) the amount of CIL spent on repaying money borrowed, including any interest, with details of the items of infrastructure which that money was used to provide (wholly or in part);.’*

*And paragraph 3(h)(ii) refers to: ‘3. The matters to be included in the section 106 report for each reported year are -
(h) in relation to money (received under planning obligations) which was spent by the authority during the reported year (including transferring it to another person to spend), summary details of -
(ii) the amount of money (received under planning obligations) spent on repaying money borrowed, including any interest, with details of the items of infrastructure which that money was used to provide (wholly or in part);.’*

2.6.5 Capital projects which use borrowings are also listed within SCC’s Capital Programme⁴. The current capital programme will cost £15m more due to increase in interest rates. This indicator is responded to on page 17.

⁴ Suffolk County Council [CYP Capital Programme 2023-2027](#)

Section 3.

Infrastructure Funding Statement 2022/23

DECEMBER 2023

3

s106 Contributions

3. s106 Contributions

3.1 In accordance with the regulations⁵, the responses to the following matters form SCC's fulfilment of an infrastructure funding statement:

The total amount of money secured to be provided under any planning obligations which were entered into during the reporting year:

3.2 For the reporting year, SCC entered into 38 planning agreements⁶ as broken down below including three Unilateral Undertakings (in which SCC is not a party to the Deed but will receive a developer contribution). These include the following:

- **Total - £28,810,276.40**
 - **21 planning agreements totalling £28,148,178.40**
 - **3 Unilateral Undertakings⁷ (UU) totalling £338,998**
 - **13 Deeds of Variation⁸ (DoV). One of these includes financial adjustment (£73,100)**
 - **1 s111 agreement (£250,000)**

3.3 Please see Appendix 2 for a full list of the contributions.

3.4 This reporting year includes the Deed of Obligation for the Sunnica Energy Solar Farm, a nationally significant infrastructure project (NSIP), which secures £250,000 in financial planning obligation for rights of way improvements which will be received by SCC. The planning application has yet to be determined by the Secretary of State for Business, Energy and Industrial Strategy, although the S111 agreement was signed on 28 March 2022. In accordance with the 2019 CIL Regulations and based on advice from the Planning Advisory Service (PAS), this IFS reports on planning obligations signed in the reporting year.

3.5 In certain circumstances, planning agreements are modified or varied; this change to a planning agreement is called a deed of variation (DoV). Of the 38 planning agreements secured in this reporting year, 13 were deeds of variations. It is important to note that not all DoVs in this reporting year will relate to the original planning agreements being secured in this same reporting year as they may be from previous years.

3.6 The number of dwellings linked to planning agreements signed in this IFS totalled 2,794 dwellings (2,428 dwellings 2021/22).

⁵ Community Infrastructure Levy (Amendment) (England)(No.2) Regulations 2019 Regulation 121A Annual infrastructure statements - Schedule 2 matters to be included in the infrastructure funding statement

⁶ Agreements are available from <https://www.suffolk.gov.uk/planning-waste-and-environment/planning-and-development-advice/section-106-planning-obligations/infrastructure-funding-statements>

⁷ Unilateral Undertakings are a planning obligation offered by the applicant to the County Council as a single party offering in support of a planning application.

⁸ Deeds of Variation mean that an aspect of the original planning agreement has been varied. In this case, the contributions originally secured, including any variation, are identified for the purpose of this statement.

3.7 The 13 deeds of variation signed during this reporting year are listed in the table below, which also shows the financial implication of one of the DoVs.

Table 1: List of the deeds of variation signed during the reporting year

Agreement Number	LPA Ref	Agreement Signed Date	Parish	District	Financial change
34049	EN010012	13-Apr-22	Leiston	East Suffolk	n/a
51089	1832/17 DC/20/037 04/RM	13-Apr-22	Whitton	Mid Suffolk	+£73.100
34049	EN010012	6-May-22	Leiston	East Suffolk	n/a
33203	DC/20/403 9/VAR	21-Jun-22	Shotley	Babergh	n/a
39023	DC/22/020 7/VAR	5-Jul-22	Risbygate (Tower)	West Suffolk	n/a
40843	DCO	1-Sep-22	Eye	Mid Suffolk	n/a
50499	DC/20/046 30/VAR & DC/21/013 51/VAR	15-Sep-22	Walsham-le- Willows	Mid Suffolk	n/a
24253	DC/17/143 5/OUT	14-Dec-22	Waldringfield	Mid Suffolk	n/a
46041	IP/17/0076 9/OUT	15-Dec-22	Ipswich	Ipswich	n/a
45908	DC/21/068 05/VAR	17-Jan-23	East Bergholt	Babergh	n/a
44370	1636/16	24-Jan-23	Woolpit	Mid Suffolk	n/a
35796	DC/22/015 51/VAR	2-Mar-23	Elmswell	Mid Suffolk	n/a
36311	DC/13/040 8/OUT	9-Mar-23	Newmarket	West Suffolk	n/a

3.8 Some of these contributions may have already been paid to SCC, but the majority will be calculated and paid at the later agreed trigger points (for example, on the

commencement of the development build or, for larger sites, these payments may be phased) over the coming years.

3.9 SCC has a good track record of securing developer contributions to help mitigate the impacts of new development. However, developer contributions can only be sought where they meet the 3 legal tests, so there may be instances in which the improvement of existing infrastructure or the delivery of new infrastructure will require additional funding from other sources.

3.10 Please see 'Appendix 1' and 'Appendix 2' - All-new s106 legal agreements entered into during the reporting year 2022/23 and a full list of the contributions secured.

The total amount of money under any planning obligations which was received during the reporting year:

3.11 **£11,122.279.12** was received during the reporting year and not spent. These contributions either fund part or all project costs and are allocated in accordance with the clauses of the legal agreements.

3.12 A large proportion of the funding received will fund new schools and school expansions to accommodate the population growth. Funding also included contributions for transport and travel, waste, and library projects.

The total amount of money under any planning obligations which was received before the reporting year which has not been allocated by the authority:

3.13 As soon as a contribution is received by SCC, it is allocated to the relevant service and project as described in the s106 agreement. Therefore, for the period up until and including 31st March 2023, there is no received money that has not been allocated, i.e., **£0**.

Summary details of any non-monetary contributions to be provided under planning obligations which were entered into during the reporting year, including details of the number of school places for pupils which will be provided, and the category of school at which they will be provided:

3.14 The table below provides a summary of the non-monetary contributions that were secured through s106 agreements in the reporting year 2022/23. A 2.2ha school site is large enough to ultimately deliver a 420-places primary school and 60-places early years setting.

Table 3: Summary of the non-monetary contributions that were secured through s106 agreements

Planning Reference	Site	Contribution Purpose	Agreement Date	Obligation Description
DC/19/02656 Mid Suffolk District Council	Land south of Stowmarket Road Woolpit Suffolk (Phase 2)	Land for Primary School Extension Site.	07/07/2022	Site allocated for the Primary School Extension is shown for identification purposes shaded purple and marked "Proposed School Extension Site" on the School Plan;
DC/19/2456/HYB	Great Barton, Bury Road (BSE north east strategic allocation) IP32 7GX	Early Years and Primary School Land	07/10/2022	An area of land of 2.06 hectares within the Site in the general location shown shaded purple for indicative purposes on the 'parameter plan – land use'.
DC/19/05419/HYB	Hadleigh, land south of Tower Mill Lane and east of Frog Hall Lane - phase 2	Early Years Site	08/11/2022	The Prepared and Serviced Site of a minimum of 928sqm to accommodate the Early Years Education Site and which can also be used for non-commercial community purposes.

3.15 The following tables provide an estimate of how many additional places are to be provided and how many places were delivered by SCC in the reporting year (contributions to deliver these additional places will have been received from previous reporting years). Some historic s106 agreements will include contributions towards improving and enhancing facilities that may not necessarily generate additional places.

Table 4: Number of school places to be provided⁹:

Total number of school places for pupils to be provided through planning obligations agreed in 2022/23	Amount Secured (£)	Equivalent places based on 2021 DfE scorecard costs
Early Years	£976,993.9	45 (£21,774 per place)
Primary	£6,413,973	294 (£21,774 per place)
Secondary	£1,687,543	64 (£26,366 per place)
Sixth Form	£432,587.70	16 (£26,366 per place)
Other	-	-

Table 5: Number of school places which have been provided during the IFS year:

⁹ Some of these contributions will be raised through a deed of variation being sealed within the reporting year but the contribution is likely to have been secured in previous years.

Total number of school places for pupils which were provided through planning obligations (whenever agreed) in 2022/23	Amount Spent (£)	Equivalent places based on 2021 DfE scorecard costs ¹⁰
Early Years	£576,900	26 (£21,774 per place)
Primary	£4,038,300	185 (£21,774 per place)
Secondary	£10,844,500	411 (£26,366 per place)
Sixth Form	-	-
Other	-	-

3.16 See the section on infrastructure projects delivered by SCC for further information on school project delivery.

The total amount of money (received under any planning obligations) that was spent by the authority (including transferring it to another party to spend);

3.17 SCC has spent **£5,663,537.39** from s106 during the reporting year. See Appendix 3 for a breakdown.

Table 6: Service spend breakdown:

Service	Total Expense 2022/23 (£)
Libraries	253,356.28
Waste	55,501.53
Highways - Development Management	325,780.83
Highways - Rights of Way	43,069.36
Pre-School	68,228.49
Highways - Travel Planning	95,725.45
Highways - Public Transport	216,387.63
Speed Management	190,909.79
Education	4,143,759.11
Fire and Rescue Service	140,940.60
Natural Environment and Highways Landscape	129,732.59

The money (received under any planning obligations) which was allocated by the authority but not spent during the reporting year, summary details of the items of infrastructure on which the money has been allocated, and the amount of money allocated to each item;

3.18 **£11,122,279.12** See Appendix 4 for breakdown.

¹⁰ The DfE Securing developer contributions for education' states; "Where you have a reasonable expectation of higher costs based on local planning policy requirements, known site abnormalities or recent trends of higher delivery costs for projects in your area, these can be used in preference to the regional average in the school places scorecard".

The money (received under planning obligations) which was spent by the authority during the reporting year (including transferring it to another party to spend), summary details of the items of infrastructure on which the money has been allocated, and the amount of money allocated to each item;

(i) the items of infrastructure on which that money (received under planning obligations) was spent, and the amount spent on each item;

3.19 See Appendix 3

(ii) the amount of money (received under planning obligations) spent on repaying money borrowed, including any interest, with details of the items of infrastructure which that money was used to provide (wholly or in part);

3.20 SCC did not use any developer contributions to repay borrowing or interest in the IFS year. SCC finances the capital programme as a whole by applying the available sources of funding and use borrowing to bridge any gap each year. If a project is to be financed by a developer contribution but this has not yet been received, we would apply another financing source and swap this around to finance something else once the developer contribution is received, in a later year.

3.21 No specific loans were taken out to cover spend incurred on a project which has not yet received its developer contribution, and therefore do not calculate any interest either.

(iii) the amount of money (received under planning obligations) spent in respect of monitoring (including reporting under regulation 121A) in relation to the delivery of planning obligations;

3.22 Since the CIL regulations in 2019 allowed a monitoring fee, SCC started to secure monitoring fees on planning obligations from September 2019. From 1st January 2023 SCC charge a minimum of **£476** for each separate trigger point in a planning obligation towards administration costs. The fee is based upon the occurrence of triggers for compliance of a planning obligation rather than each obligation individually. The monitoring fee is to be paid on completion of the s106 legal deed, as SCC has to start administration activities from that point onwards.

3.23 **£28,112** in monitoring fees was received during the reporting year, and all of it was spent during the same reporting year.

The total amount of money (received under any planning obligations) during any year which was retained at the end of the reporting year, and where any of the retained money has been allocated for the purposes of long-term maintenance ("commuted sums"), also identify separately the total amount of commuted sums held.

3.24 The total amount which has been received and allocated (in any year) (up to 31st March 2023) but will be spent in upcoming years is **£33,903,275.78**. S106

funding is closely monitored and robustly managed via a vigorous internal sign-off mechanism to ensure that it is used for the purpose identified within the original agreement.

3.25 The reason the above figure is significant is that many contributions have a period of 10 years for SCC to spend the money. Larger infrastructure projects such as school expansions or new schools are often linked to other developments, and these developments will not secure all s106 contributions at the same time as the first. The infrastructure projects themselves may only be delivered when a substantial quantum of growth has arisen.

Table 7: Total money, received through planning obligations (whenever agreed), retained at the end of 2022/2023 as “commuted sums” for long-term maintenance.

Agreement number	LPA Ref	Obligation description	Address	Amount received and allocated but not spent
33023	W402/19 (Refer to the County Council’s planning register)	Annual Maintenance of Hill Road, Wangford. Annual £600 maintenance charges are due in January each year until the quarry ceases operations.	Wangford Quarry	£903.04
32846	Department of Energy & Climate Change decision – documents available from https://www.gov.uk/government/news/dry-fuel-store-given-consent	Accessibility Payment - Annual payment of £20,000 for 60 years.	Sizewell Dry Fuel Store	£24,078.71
Total				£24,981.75

3.26 This statement provides information on the planning obligations secured during the reporting year, based on the date that the planning agreements have been signed. It is important to bear in mind that where there are planning appeals progressing on sites that have secured s106 agreements, these appeals may affect the planning obligations, as such, please see below a list of current planning appeals.

Table 8: List of appeal cases where planning agreements have already been signed (potentially for consideration in the next IFS year).

Agreement Number	LPA Ref	Parish	Address
60018	DC/20/00330/OUT	Boxford	Boxford, land east of Sand Hill

Section 4.

Infrastructure Funding Statement 2022/23

DECEMBER 2023

4

Infrastructure projects
delivered by SCC

4. Infrastructure projects delivered by SCC

This section provides some examples of the infrastructure projects delivered by SCC during the reporting year or recently.

4.1 Education projects

4.1.1 Holton St Peter Primary School - Early Years Provision

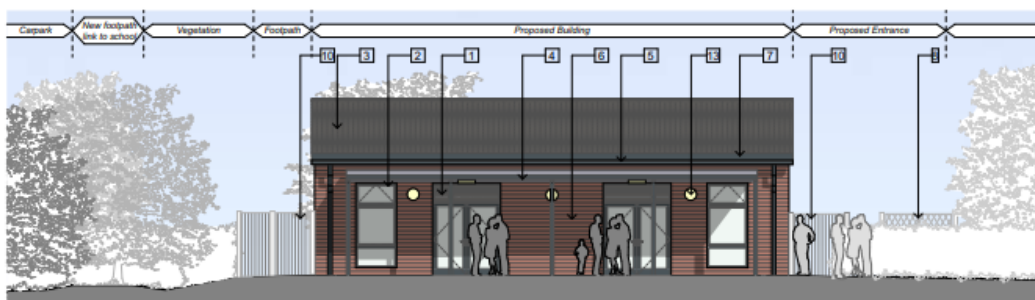
Construction on a new 30 place standalone early years building at Holton St Peter started in July 2023, and is due to complete later this year.

The additional accommodation will provide space for up to 30 early years pupils, pupil WCs, office space, and a new entrance and lobby for the primary school. The new setting will allow the school to welcome more children from the local area, including expanding the offering to 2- and 3-year-olds.

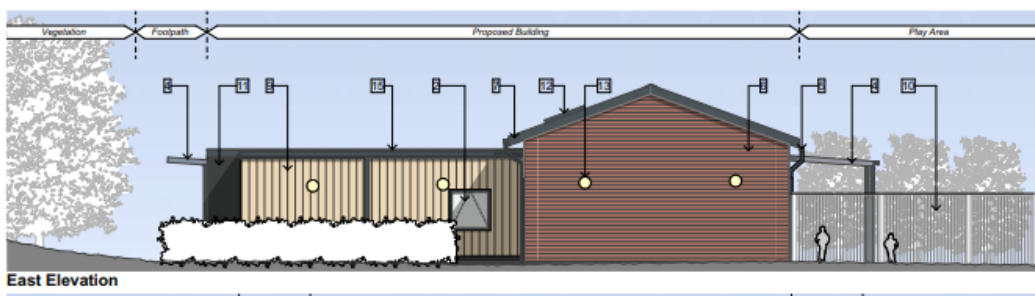
The project was awarded £615,240 in CIL funding by East Suffolk Council in September 2021 as well as a further £615,000 in September 2022 (Total project cost £1,230,000).



Holton St Peter – New Early Years Setting



North Elevation



East Elevation

Holton St Peter School – Proposed Elevations for single storey standalone Early Years block for an additional 30 places – Concertus 2022.

4.1.2 Holbrook Academy Expansion

The expansion at Holbrook Academy delivered new science labs, and converted the former school bungalow into teaching space, expanding capacity by an additional 10 places. New housing such as developments of 72 new homes in Stutton and Chelmondiston meant additional places were needed, with Holbrook Academy's new capacity of 600 places.



Bungalow conversion

The total cost of the project was £237,750, the full cost of the project was covered by a successful CIL bid to Babergh District Council in 2021. Total project cost £529,750. No s106 contributions were used to fund the project.



Holbrook Academy - science labs and bungalow conversion

4.1.3 Brecklands Secondary School Expansion



Brecklands Secondary School, in Brandon, has added a new two-storey block to its site which will allow the school to accommodate an additional 100 pupil places. The extension includes two new science laboratories, two new classrooms, and an activity studio.

Funding for this project came from Basic Need¹¹ Funding, Council borrowing, and £36,710 secured via a s106 agreement attached to a housing development in Brandon. The total project cost was £4,056,412.

It was completed in February 2023.

Brandon, Brecklands Secondary School expansion

4.1.4 Brantham, Brookland Primary School Expansion

An expansion to Brooklands Primary school completed in November 2022 has created an additional 105 pupil spaces.

The expansion provided the school with three new classrooms, a studio, small group room, toilets and additional parking.

Landscaping works and an overlay of the current playground were also carried out during the project.



Brantham, Brooklands Primary School expansion

The total cost of the project was £1.9 million and was funded from Suffolk County Council's Capital Programme, a Community Infrastructure Levy (CIL) allocation from Babergh District Council of £345,360 granted in 2021, and £950,118 of S106 funding.

¹¹ Basic need funding is the money the DfE give local authorities each year to help them fulfil their duty to make sure there are enough school places for children in their local area. The DfE's Basic Need grant, free schools programme and other capital funding do not negate housing developers' responsibility to mitigate the impact of their development on education (Para 11. [Securing developer contributions for education](#)).

4.1.5 Elmswell Community Primary School Expansion

Elmswell Community Primary School expansion included a three-classroom extension and studio to the existing standalone block, and an extension to the main school to



increase staff, administration and kitchen accommodation. External changes include re-provision of hard play area, an all-weather pitch and improved pedestrian access and parking. The project expands capacity at the primary school from 315 to 420 pupils.

Elmswell Community Primary School new classroom

The total cost of the expansion was £2.2million. The project was funded from £664,878 of S106 funding, and a CIL bid of £1,560,000 from Mid Suffolk District Council in 2021. Construction was completed in April 2023.



Multiuse games area

4.1.6 Thurston Community College Expansion

Thurston Community College has expanded by adding a new school block housing state-of-the-art science lab and modern social sciences classrooms and created 150 additional student places.

The total cost of the project was £2,018,011. It was funded from Basic Need Funding, £184,595 of S106 funding, and a CIL bid of £1.7 million from Mid Suffolk District Council which was granted in 2022. The expansion was officially opened in September 2023.



Thurston Community College Expansion

4.1.7 Bungay High School Expansion

A new two-storey stand-alone block has been added to Bungay High School creating an additional 150 places for new pupils. The new block includes four new classrooms, a staff area, a kitchen, and dining facilities.

The total cost of the project was £4,826,866. The project was awarded a CIL bid of £624,070 in 2021, with the remainder of the funding coming from Basic Need Funding and Council borrowing. The expansion was officially handed over in January 2023.



Bungay High School – new stand-alone block

4.2 Highways projects

4.2.1 Framlingham, East Suffolk - Walkways route

The project was initially approved for CIL funding in 2018 and consisted of different elements of highways safety improvements.

The first part of the projects was delivered in November 2018 and included a new zebra crossing on Station Road, adjacent to the Hopkins Homes site known as Prospect Place. The total cost of this phase of the project was £39,908.

The second phase of the project was completed in March 2023 with road safety improvements for the Pembroke Road junction. The project is to make the junction narrower to make it safer for pedestrians to cross, as currently the junction was previously very wide, and it allowed vehicles to enter at speed. The total cost of this phase of the project was £42,815.



Framlingham, East Suffolk – Pembroke Road Junction Improvements

4.3 Libraries projects

4.3.1 Stock/resources and revenue

£253,358 has been spent by the libraries service this year on capital building works and revenue which has included book stock and resources for various libraries. The building works related to improvements to Newmarket Library lift pictured below.



Newmarket Library Lift

Revenue was also spent on the fit out of the new Needham Market library during this IFS year.



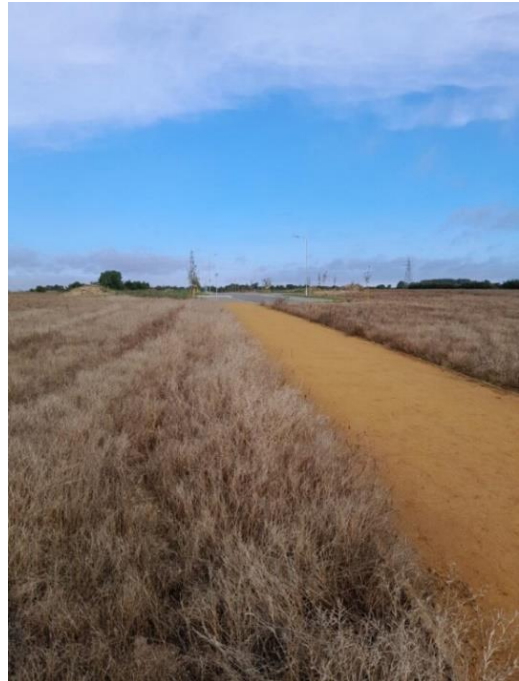
Needham Market Library fit out

4.4 PRow projects

4.4.1 Stowmarket, Gateway 14 – Public footpath improvements

As part of the Gateway 14 employment development in Stowmarket, a new pedestrian link to the Gipping River Valley Way in the southeast of the site was created, increasing public accessibility to the river valley. As well as this, following feedback from the public, an existing footpath to Creting St Mary was diverted through the site, and away from the A14. The footpath will be upgraded to a Bridleway in the near future.

This project was secured through a s106 agreement attached to the Gateway 14 development, which required the developers to deliver these works.



Stowmarket, Mid Suffolk – Gateway 14 New Public Right of Way

4.4.2 Halesworth, East Suffolk - Footpath on Hill Farm Road

The project provides improvements to the existing Public Right of Way network with

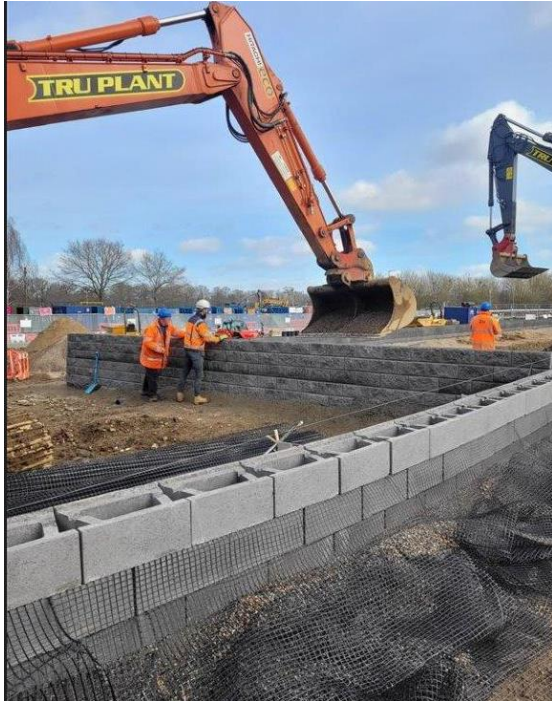


Halesworth – FP8 Footpath improvements

better connectivity to the town centre, to Holton Saint Peter Community Primary School and to the sports ground and playing field. The project was approved for CIL funding from East Suffolk Council in October 2018, and was delivered in August 2022. The total cost of the project is in the region of £27,301.

4.5 Waste projects

4.5.1 Foxhall Household Waste & Recycling Centre, East Suffolk - Improvements



Foxhall HWRC – Construction progress

This project is currently underway and has received £794,414 from East Suffolk Council through CIL funding. The cost of the project is estimated at £7.8 million. Works started in Autumn 2022.

In April 2023 SCC successfully bid for additional CIL funding of £164k to help fund the additional costs that have accrued due to rises in construction costs.

The current Foxhall Recycling Centre serves a large area of the East Suffolk population and is already in need of re-development to stay in place as it is operating at capacity. This project aims to expand and improve the Recycling Centre providing a faster throughput, more efficient service, increased safety for the public users and enhancing the recycling and reuse service provision.

The project will also involve highway improvements to the site entrance. The benefits of this scheme will:

- Reduce the risk of queueing on the highway at peak times.
- Provide an improved space and layout for easier access.
- Improve accessibility and increase capacity by eliminating the need for site users to climb steps to access containers.
- Improve the Re-use Centre space.
- Introduce greater separation between public vehicles and larger vehicles.

The new design will provide queuing capacity within the site and improved access from the public highway. The raised level construction will improve access to the containers for site users by removing the need for stairs. It means containers can continue to be emptied without the need to close the site.



New level access at Foxhall Household Waste & Recycling Centre, East Suffolk

Section 5.

Infrastructure Funding Statement 2022/23

DECEMBER 2023

5

Community
Infrastructure Levy

5. Community Infrastructure Levy

5.1 Although SCC is not a CIL charging authority, CIL funding is received for some infrastructure projects following successful bids to the local planning authorities (LPAs), who are CIL Charging Authorities.

5.2 It is important for SCC to receive CIL funding to deliver the infrastructure necessary to mitigate development in the districts. The consequence of SCC not receiving CIL funding would mean projects not being delivered, or where other funding (historic s106 contributions) is primarily delivering the project, SCC would have to borrow money to pay for the funding gap. For every £10m borrowed, the cost of borrowing is currently estimated at £688k per annum for 30 years, up from the previous figure of £571k.

5.3 SCC provides details below of the successful awarding of CIL funding. This includes collection and subsequent spend.

The items of infrastructure on which CIL (including land payments) has been spent and the amount of CIL spent on each item.

5.4 The table below provides a list of the infrastructure projects for which SCC was awarded CIL funding within this reporting year.

Table 9: Infrastructure projects for which SCC was awarded CIL funding (during the reporting year)

Project	Location	Contribution amount	Awarding Body	Awarding of Funding Decision Made	Project Stage
Thurston Community College Expansion Phase 2	Thurston	£1,781,462.00	Mid Suffolk District Council	November 2022	Expansion – 1,500 to 1,650 places (Phase 2). Completed September 2023.
Holton - Holton St Peter Primary School new Early Years provision additional CIL bid	Holton	£615,240	East Suffolk Council	September 2022	Planning application stage.
Lowestoft HWRC	Lowestoft	£751,642	East Suffolk Council	September 2022	Planning application stage.
Total		£3,148,344			

CIL applied for inside IFS year but will be awarded in the next IFS

Project	Location	Contribution amount	Awarding Body	Expected Date for Awarding of Funding Decision to be Made	Project Stage
Bungay Library	Bungay	£32,400	East Suffolk Council	September 2023	Pre commencement stage
Melton Early Years Setting	Melton	£1,350,000	East Suffolk Council	September 2023	Planning stage
Foxhall HWRC improvements – additional CIL bid	Foxhall	£164,500	East Suffolk Council	September 2023	Construction commenced 17/10/2022, expected completion Spring 2024.
Total		£1,546,900			

5.5 In total SCC has been awarded **£15,691,787.71** from the districts CIL funding towards infrastructure projects in Suffolk.

Section 6.

Infrastructure Funding Statement 2022/23

DECEMBER 2023

6

Appendices

6. Appendices

Appendix 1 - All-new section 106 agreements entered in 2022/23

Section 106 agreements are available online from the following weblink (covering all IFS reporting periods): <https://www.suffolk.gov.uk/planning-waste-and-environment/planning-and-development-advice/section-106-planning-obligations/infrastructure-funding-statements/>

Agreement Number	LPA Ref	District	Address
51695	DC/18/00706/HYB	Babergh District	Wherstead, Klondyke Field west of Bourne Hill (Bourne View) IP2 8NG
60191	DC/21/05017/FUL	Babergh District	Sudbury, former lorry park, Station Road CO10 2SS
33203	B/06/0060/RO	Babergh District	Shotley, Shotley Marina, Queen Victoria Drive and King Edward VII Drive (Victory House) IP1 1QJ
54409	DC/19/05624/OUT	Babergh District	Wherstead, land west of Vicarage Lane IP9 2BB
60278	DC/22/00754/FUL	Babergh District	Bures St Mary, former Chambers Bus Depot, Church Square CO8 5AB
60204	DC/22/01754/FUL	Babergh District	Elmsett, land east of Hadleigh Road IP7 6ND
39782	DC/19/05419/HYB	Babergh District	Hadleigh, land south of Tower Mill Lane and east of Frog Hall Lane - phase 2 (urban extension - strategic allocation) IP7 6LA Rose Manor
45908	B/16/01092/OUT	Babergh District	East Bergholt, land south of Heath Road (Constable Country Medical Centre) CO7 6RT
24253	DC/17/1435/OUT	East Suffolk	Martlesham Heath, land south and east of Adastral Park (Brightwell Lakes) IP12 4PS
34049	EN010012	East Suffolk	Leiston, Sizewell C Nuclear Power Station IP16 4UR - NSIP (Deed of Obligation)
34049	EN010012	East Suffolk	Leiston, Sizewell C Nuclear Power Station IP16 4UR - NSIP (Deed of Obligation)
60165	DC/21/2679/FUL	East Suffolk	Wrentham, land to the north of Chapel Road NR34 7NX Jubilee Park
59988	DC/19/3916/OUT	East Suffolk	Rushmere St Andrew, land at 155 The Street IP5 1DH
60046	DC/20/1831/OUT	East Suffolk	Melton, land off St Andrews Place and Waterhead Lane IP12 1PZ - Appeal allowed
60111	DC/20/5181/OUT	East Suffolk	Leiston, land east of Abbey Road IP16 4RE
60239	DC/22/0991/FUL	East Suffolk	Trimley St Mary, land adjacent to Mill Farm, Thomas Avenue / Thurmans Lane IP11 0YS

60105	DC/21/0541/FUL	East Suffolk	Felixstowe, Garrison Lane, land at the former Deben High School site IP11 7RF - Deben Fields
60135	DC/21/0757/FUL	East Suffolk	Kettleburgh, land north of The Street IP13 7JP
46041	IP/17/00769/OUT	Ipswich Borough	Ipswich, Norsk Hydro Limited, land off Sandyhill Lane IP3 0JB
58147	IP/19/00148/OUT	Ipswich Borough	Ipswich, Grafton Way IP1 1AX
60203	IP/22/00482/FUL	Ipswich Borough	Ipswich, 114 Fore Hamlet, Orwell Centre - Hope Church IP3 8AF
40843	DCO	Mid Suffolk District	Eye, Eye Airfield Gas Turbine Power Station IP23 7DH (DRAX)
35796	0210/17 DC/19/0249	Mid Suffolk District	Elmswell, land off Ashfield Road, (Blackbourne Meadows) - Ashfield Park IP30 9HG
44370	1636/16	Mid Suffolk District	Woolpit, land south of Old Stowmarket Road (Abbots Green) IP30 9QS Phase 1
50499	1352/17	Mid Suffolk District	Walsham Le Willows, land west of Wattisfield Road (The Acorns) IP31 3BD
51089	1832/17	Mid Suffolk District	Claydon, land to the west of Old Norwich Road IP1 6LH Ridley's Orchard
50054	DC/19/02656/OUT	Mid Suffolk District	Woolpit, land south of Old Stowmarket Road - Phase 2 IP30 9RU
60096	DC/20/04921/OUT	Mid Suffolk District	Wetheringsett Cum Brockford, land east of Hockey Hill IP14 5PL - Appeal allowed
60115	DC/21/02982/FUL	Mid Suffolk District	Debenham, land east of Aspell Road IP14 6QA
36311	DC/13/0408/OUT	West Suffolk	Newmarket, Hatchfield Farm, Fordham Road CB8 7XL - Appeal ALLOWED
39023	DC/15/1520/FUL	West Suffolk	Bury St Edmunds, Burlingham Mill, Station Hill IP32 6AD
52298	DC/19/2456/HYB	West Suffolk	Great Barton, Bury Road (BSE north east strategic allocation) IP32 7GX Appeal allowed
60273	DC/22/0793/FUL	West Suffolk	Bury St Edmunds, 40 Hollow Road, IP32 7AY
60171	DC/21/2337/OUT	West Suffolk	Mildenhall, West Row, land east of Beeches Road IP28 8PA
60225	DC/21/2094/OUT	West Suffolk	Clare, Townsend Nurseries, Snow Hill CO10 8QE
60280	DC/22/1267/FUL	West Suffolk	Bury St Edmunds, former Gas works site, Tayfen Road IP33 1TB
56103	DC/18/1492/HYB	West Suffolk	Lakenheath, land off Dumpling Bridge Lane IP27 9JU
60326	EN010106	West Suffolk	Freckenham, Worlington, Sunnica East - Solar Farm, Green Lane

Appendix 2 – Contributions secured through section 106 agreements entered into during 2022/23 – set out per trigger amount.

NOTE: Sums for agreements will be repeated when more than one trigger point has been agreed that aligns with phases of development such as highways and education.

LPA Ref	Service	Contribution as per S106 Agreement	Parish	District
Total		28,737,764.00		
DC/21/05017/FUL	Highways - Travel Planning	5,000.00	Sudbury	Babergh District Council
DC/21/05017/FUL	S106 Monitoring Fees	824.00	Sudbury	Babergh District Council
DC/21/05017/FUL	Highways - Rights of Way	5,000.00	Sudbury	Babergh District Council
DC/21/05017/FUL	Highways - Rights of Way	5,000.00	Sudbury	Babergh District Council
DC/21/05017/FUL	Highways Development Management -	5,000.00	Sudbury	Babergh District Council
DC/19/05624/OUT	Highways Development Management -	37,100.00	Wherstead	Babergh District Council
DC/19/05624/OUT	Highways - Travel Planning	1,000.00	Wherstead	Babergh District Council
DC/19/05624/OUT	Highways - Travel Planning	1,000.00	Wherstead	Babergh District Council
DC/19/05624/OUT	Highways - Travel Planning	1,000.00	Wherstead	Babergh District Council
DC/19/05624/OUT	Highways - Travel Planning	1,000.00	Wherstead	Babergh District Council
DC/19/05624/OUT	Highways - Travel Planning	1,000.00	Wherstead	Babergh District Council
DC/18/00706/HYB	Highways - Rights of Way	22,000.00	Wherstead	Babergh District Council
DC/19/05624/OUT	S106 Monitoring Fees	2,060.00	Wherstead	Babergh District Council
DC/22/00754/FUL	Highways Development Management -	11,500.00	Bures St. Mary	Babergh District Council
DC/22/01754/FUL	Highways - Public Transport	24,100.00	Elmsett	Babergh District Council
DC/22/01754/FUL	Highways - Public Transport	24,100.00	Elmsett	Babergh District Council
DC/22/01754/FUL	Highways - Public Transport	6,000.00	Elmsett	Babergh District Council
DC/19/05419/HYB	Education	273,412.50	Hadleigh	Babergh District Council
DC/19/05419/HYB	Education	546,825.00	Hadleigh	Babergh District Council

DC/19/05419/HYB	Education	273,412.50	Hadleigh	Babergh District Council
DC/19/05419/HYB	Highways - Rights of Way	15,000.00	Hadleigh	Babergh District Council
DC/19/05419/HYB	Libraries	58,968.00	Hadleigh	Babergh District Council
DC/19/05419/HYB	Pre-School	451,176.00	Hadleigh	Babergh District Council
DC/19/05419/HYB	Education	107,925.00	Hadleigh	Babergh District Council
DC/19/05419/HYB	Education	215,850.00	Hadleigh	Babergh District Council
DC/19/05419/HYB	Education	107,925.00	Hadleigh	Babergh District Council
DC/19/05419/HYB	Education	213,975.00	Hadleigh	Babergh District Council
DC/19/05419/HYB	Highways - Travel Planning	101,365.00	Hadleigh	Babergh District Council
DC/19/05419/HYB	Highways Development Management	50,000.00	Hadleigh	Babergh District Council
DC/19/05419/HYB	Education	134,916.00	Hadleigh	Babergh District Council
DC/22/00754/FUL	S106 Monitoring Fees	412.00	Bures St. Mary	Babergh District Council
DC/22/01754/FUL	S106 Monitoring Fees	824.00	Elmsett	Babergh District Council
DC/19/05419/HYB	S106 Monitoring Fees	5,356.00	Hadleigh	Babergh District Council
DC/19/3916/OUT	Education	82,032.00	Rushmere St. Andrew	East Suffolk
DC/19/3916/OUT	Education	74,787.00	Rushmere St. Andrew	East Suffolk
DC/19/3916/OUT	Pre-School	41,016.00	Rushmere St. Andrew	East Suffolk
DC/19/3916/OUT	Highways - Public Transport	17,000.00	Rushmere St. Andrew	East Suffolk
DC/19/3916/OUT	Highways - Rights of Way	15,000.00	Rushmere St. Andrew	East Suffolk
DC/19/3916/OUT	S106 Monitoring Fees	824.00	Rushmere St. Andrew	East Suffolk
DC/20/1831/OUT	Education	92,281.00	Melton	East Suffolk
DC/20/1831/OUT	Education	92,281.00	Melton	East Suffolk
DC/20/1831/OUT	Highways Development Management	10,000.00	Melton	East Suffolk
DC/20/5181/OUT	Highways - Public Transport	25,000.00	Leiston	East Suffolk
DC/20/5181/OUT	Highways - Travel Planning	1,000.00	Leiston	East Suffolk
DC/20/5181/OUT	Highways - Travel Planning	1,000.00	Leiston	East Suffolk

DC/20/5181/OUT	Highways - Travel Planning	1,000.00	Leiston	East Suffolk
DC/20/5181/OUT	Highways - Travel Planning	1,000.00	Leiston	East Suffolk
DC/20/5181/OUT	Highways - Travel Planning	1,000.00	Leiston	East Suffolk
DC/20/5181/OUT	Highways - Travel Planning	1,000.00	Leiston	East Suffolk
DC/20/5181/OUT	Highways - Rights of Way	32,600.00	Leiston	East Suffolk
DC/20/5181/OUT	Highways Development Management	30,000.00	Leiston	East Suffolk
DC/22/0991/FUL	Pre-School	108,870.00	Trimley St. Mary	East Suffolk
DC/22/0991/FUL	Education	239,514.00	Trimley St. Mary	East Suffolk
DC/21/0541/FUL	Education	195,966.00	Felixstowe	East Suffolk
DC/21/0541/FUL	Pre-School	130,644.00	Felixstowe	East Suffolk
DC/21/0757/FUL	Highways - Public Transport	18,075.00	Kettleburgh	East Suffolk
DC/21/0757/FUL	Highways - Public Transport	16,870.00	Kettleburgh	East Suffolk
DC/20/1831/OUT	S106 Monitoring Fees	1,236.00	Melton	East Suffolk
DC/20/5181/OUT	S106 Monitoring Fees	824.00	Leiston	East Suffolk
DC/22/0991/FUL	S106 Monitoring Fees	412.00	Trimley St. Mary	East Suffolk
DC/21/0541/FUL	S106 Monitoring Fees	476.00	Felixstowe	East Suffolk
DC/21/0757/FUL	S106 Monitoring Fees	476.00	Kettleburgh	East Suffolk
DC/21/2679/FUL	S106 Monitoring Fees	824.00	Wrentham	East Suffolk
DC/21/2679/FUL	Highways - Public Transport	63,262.50	Wrentham	East Suffolk
DC/21/2679/FUL	Highways - Public Transport	63,262.50	Wrentham	East Suffolk
DC/21/2679/FUL	Highways - Public Transport	33,137.50	Wrentham	East Suffolk
DC/21/2679/FUL	Highways - Public Transport	33,137.50	Wrentham	East Suffolk
IP/19/00148/OUT	S106 Monitoring Fees	1,236.00	Ipswich	Ipswich Borough Council
IP/19/00148/OUT	Education	0.00	Ipswich	Ipswich Borough Council
IP/19/00148/OUT	Pre-School	0.00	Ipswich	Ipswich Borough Council
IP/19/00148/OUT	Libraries	0.00	Ipswich	Ipswich Borough Council

IP/19/00148/OUT	Education	0.00	Ipswich	Ipswich Borough Council
IP/19/00148/OUT	Education	0.00	Ipswich	Ipswich Borough Council
IP/19/00148/OUT	Highways - Travel Planning	0.00	Ipswich	Ipswich Borough Council
IP/19/00148/OUT	Highways - Public Transport	0.00	Ipswich	Ipswich Borough Council
IP/19/00148/OUT	Highways - Rights of Way	0.00	Ipswich	Ipswich Borough Council
IP/19/00148/OUT	Waste	0.00	Ipswich	Ipswich Borough Council
IP/19/00148/OUT	Highways Development Management	11,500.00	Ipswich	Ipswich Borough Council
IP/19/00148/OUT	County Council services (above)	241,750.00	Ipswich	Ipswich Borough Council
IP/19/00148/OUT	County Council services	241,750.00	Ipswich	Ipswich Borough Council
IP/19/00148/OUT	County Council contribution subject to viability	1,623,800.00	Ipswich	Ipswich Borough Council
IP/22/00482/FUL	Education	69,072.00	Ipswich	Ipswich Borough Council
IP/22/00482/FUL	Libraries	6,960.00	Ipswich	Ipswich Borough Council
IP/22/00482/FUL	Waste	3,720.00	Ipswich	Ipswich Borough Council
IP/22/00482/FUL	Highways - Public Transport	25,000.00	Ipswich	Ipswich Borough Council
IP/22/00482/FUL	Highways Development Management	11,500.00	Ipswich	Ipswich Borough Council
IP/22/00482/FUL	S106 Monitoring Fees	952.00	Ipswich	Ipswich Borough Council
DC/19/02656/OUT	S106 Monitoring Fees	1,648.00	Woolpit	Mid Suffolk District Council
DC/20/04921/OUT	S106 Monitoring Fees	412.00	Wetheringsett-cum-Brockford	Mid Suffolk District Council
DC/19/02656/OUT	Pre-School	82,032.00	Woolpit	Mid Suffolk District Council

DC/19/02656/OUT	Education	196,218.00	Woolpit	Mid Suffolk District Council
DC/19/02656/OUT	Highways Development Management -	34,000.00	Woolpit	Mid Suffolk District Council
DC/19/02656/OUT	Highways - Public Transport	36,150.00	Woolpit	Mid Suffolk District Council
DC/20/04921/OUT	Highways - Public Transport	18,075.00	Wetheringsett-cum-Brockford	Mid Suffolk District Council
DC/19/2456/HYB	S106 Monitoring Fees	5,000.00	Great Barton	West Suffolk
DC/19/2456/HYB	Education	340,432.80	Great Barton	West Suffolk
DC/19/2456/HYB	Education	1,702,164.00	Great Barton	West Suffolk
DC/19/2456/HYB	Education	1,565,990.88	Great Barton	West Suffolk
DC/19/2456/HYB	Education	1,565,990.88	Great Barton	West Suffolk
DC/19/2456/HYB	Education	1,634,077.44	Great Barton	West Suffolk
DC/19/2456/HYB	Pre-School	92,286.00	Great Barton	West Suffolk
DC/19/2456/HYB	Pre-School	461,430.00	Great Barton	West Suffolk
DC/19/2456/HYB	Pre-School	424,515.60	Great Barton	West Suffolk
DC/19/2456/HYB	Pre-School	424,515.60	Great Barton	West Suffolk
DC/19/2456/HYB	Pre-School	442,972.80	Great Barton	West Suffolk
DC/19/2456/HYB	Education	1,402,725.00	Great Barton	West Suffolk
DC/19/2456/HYB	Education	1,402,725.00	Great Barton	West Suffolk
DC/19/2456/HYB	Education	1,402,725.00	Great Barton	West Suffolk
DC/19/2456/HYB	Education	1,402,725.00	Great Barton	West Suffolk
DC/19/2456/HYB	Libraries	297,000.00	Great Barton	West Suffolk
DC/19/2456/HYB	Waste	61,875.00	Great Barton	West Suffolk
DC/19/2456/HYB	Education	279,356.25	Great Barton	West Suffolk
DC/19/2456/HYB	Education	279,356.25	Great Barton	West Suffolk
DC/19/2456/HYB	Education	279,356.25	Great Barton	West Suffolk
DC/19/2456/HYB	Education	279,356.25	Great Barton	West Suffolk
DC/19/2456/HYB	Special Educational Needs and Disabilities	35,564.80	Great Barton	West Suffolk
DC/19/2456/HYB	Special Educational Needs and Disabilities	177,824.00	Great Barton	West Suffolk
DC/19/2456/HYB	Special Educational Needs and Disabilities	163,598.08	Great Barton	West Suffolk
DC/19/2456/HYB	Special Educational Needs and Disabilities	163,598.08	Great Barton	West Suffolk
DC/19/2456/HYB	Special Educational Needs and Disabilities	170,711.04	Great Barton	West Suffolk
DC/19/2456/HYB	Education	250,000.00	Great Barton	West Suffolk
DC/19/2456/HYB	Pre-School	241,752.00	Great Barton	West Suffolk
DC/19/2456/HYB	Highways - Rights of Way	25,350.00	Great Barton	West Suffolk
DC/19/2456/HYB	Highways Development Management -	187,800.00	Great Barton	West Suffolk
DC/19/2456/HYB	Highways Development Management -	695,000.00	Great Barton	West Suffolk

DC/19/2456/HYB	Highways Development Management -	1,788,758.00	Great Barton	West Suffolk
DC/19/2456/HYB	Highways Development Management -	15,000.00	Great Barton	West Suffolk
DC/19/2456/HYB	Highways Planning - Travel	1,000.00	Great Barton	West Suffolk
DC/19/2456/HYB	Highways Planning - Travel	1,000.00	Great Barton	West Suffolk
DC/19/2456/HYB	Highways Planning - Travel	1,000.00	Great Barton	West Suffolk
DC/19/2456/HYB	Highways Planning - Travel	1,000.00	Great Barton	West Suffolk
DC/19/2456/HYB	Highways Planning - Travel	1,000.00	Great Barton	West Suffolk
DC/19/2456/HYB	Highways Planning - Travel	1,000.00	Great Barton	West Suffolk
DC/19/2456/HYB	Highways Planning - Travel	1,000.00	Great Barton	West Suffolk
DC/19/2456/HYB	Highways Planning - Travel	1,000.00	Great Barton	West Suffolk
DC/19/2456/HYB	Highways Planning - Travel	1,000.00	Great Barton	West Suffolk
DC/19/2456/HYB	Highways Planning - Travel	1,000.00	Great Barton	West Suffolk
DC/19/2456/HYB	Highways Planning - Travel	1,000.00	Great Barton	West Suffolk
DC/22/0793/FUL	S106 Monitoring Fees	500.00	Bury St Edmunds	West Suffolk
DC/19/2456/HYB	Highways Planning - Travel	1,000.00	Great Barton	West Suffolk
DC/19/2456/HYB	Highways Planning - Travel	1,000.00	Great Barton	West Suffolk
DC/19/2456/HYB	Highways Planning - Travel	1,000.00	Great Barton	West Suffolk
DC/19/2456/HYB	Highways Planning - Travel	1,000.00	Great Barton	West Suffolk
DC/19/2456/HYB	Highways Planning - Travel	1,000.00	Great Barton	West Suffolk
DC/22/0793/FUL	Libraries	6,480.00	Bury St Edmunds	West Suffolk
DC/21/2094/OUT	Education	75,759.00	Clare	West Suffolk
DC/21/2094/OUT	Education	25,253.00	Clare	West Suffolk
DC/21/2094/OUT	Libraries	4,176.00	Clare	West Suffolk
DC/21/2094/OUT	Waste	1,746.00	Clare	West Suffolk
DC/22/1267/FUL	Waste	24,111.00	Bury St Edmunds	West Suffolk
DC/22/1267/FUL	Pre-School	136,402.50	Bury St Edmunds	West Suffolk
DC/21/2094/OUT	S106 Monitoring Fees	500.00	Clare	West Suffolk
DC/22/1267/FUL	Pre-School	136,402.50	Bury St Edmunds	West Suffolk

DC/22/1267/FUL	Libraries	35,100.00	Bury Edmunds St	West Suffolk
DC/22/1267/FUL	Education	163,683.00	Bury Edmunds St	West Suffolk
DC/22/1267/FUL	Education	163,683.00	Bury Edmunds St	West Suffolk
DC/22/1267/FUL	Education	39,549.00	Bury Edmunds St	West Suffolk
DC/22/1267/FUL	Education	39,549.00	Bury Edmunds St	West Suffolk
DC/22/1267/FUL	S106 Monitoring Fees	952.00	Bury Edmunds St	West Suffolk
DC/22/1267/FUL	Education	13,183.00	Bury Edmunds St	West Suffolk
DC/22/1267/FUL	Education	13,183.00	Bury Edmunds St	West Suffolk
DC/21/2337/OUT	S106 Monitoring Fees	952.00	Mildenhall	West Suffolk
DC/21/2337/OUT	Libraries	24,592.00	Mildenhall	West Suffolk
DC/21/2337/OUT	Pre-School	90,935.00	Mildenhall	West Suffolk
DC/21/2337/OUT	Pre-School	90,935.00	Mildenhall	West Suffolk
DC/21/2337/OUT	Education	27,280.50	Mildenhall	West Suffolk
DC/21/2337/OUT	Education	27,280.50	Mildenhall	West Suffolk
DC/21/2337/OUT	Education	239,903.50	Mildenhall	West Suffolk
DC/21/2337/OUT	Education	239,903.50	Mildenhall	West Suffolk
DC/21/2337/OUT	Education	50,506.00	Mildenhall	West Suffolk
DC/21/2337/OUT	Education	50,506.00	Mildenhall	West Suffolk
DC/21/2337/OUT	Waste	4,770.00	Mildenhall	West Suffolk
DC/21/2337/OUT	Highways - Rights of Way	37,364.00	Mildenhall	West Suffolk
DC/18/1492/HYB	Education	105,464.00	Lakenheath	West Suffolk
DC/18/1492/HYB	Pre-School	29,516.00	Lakenheath	West Suffolk
DC/18/1492/HYB	Libraries	6,264.00	Lakenheath	West Suffolk
DC/18/1492/HYB	Education	26,366.00	Lakenheath	West Suffolk
DC/18/1492/HYB	Education	100,180.00	Lakenheath	West Suffolk
DC/18/1492/HYB	Highways - Public Transport	24,100.00	Lakenheath	West Suffolk
DC/18/1492/HYB	S106 Monitoring Fees	1,000.00	Lakenheath	West Suffolk
DC/18/1492/HYB	Highways - Rights of Way	10,593.00	Lakenheath	West Suffolk
EN010106 ¹²	Highways - Rights of Way	250,000.00	Worlington	West Suffolk

¹² NSIP Sunnica Solar Farm

Appendix 3 – Section 106 contributions spent in the reporting year.

LPA Reference	Amount	Obligation Description	Parish	District
B/12/00748/FUL	£6,667.00	Education	Lavenham	Babergh District Council
B/15/00263/FUL	£15,512.17	Education	Brantham	Babergh District Council
B/10/01308/FUL	£82,637.55	Highways - Public Transport	Sudbury	Babergh District Council
B/15/00993/FUL	£3,180.00	Education	Pinewood	Babergh District Council
B/14/00804/FUL	£9,809.31	Waste	Great Cornard	Babergh District Council
B/15/00180/OUT	£990.69	Waste	Long Melford	Babergh District Council
B/15/00426/FUL	£912.86	Waste	Whatfield	Babergh District Council
B/16/00760, DC/17/04	£1,031.93	Highways - Development Management	Hadleigh	Babergh District Council
B/10/01308/FUL	£6,285.65	Highways - Development Management	Sudbury	Babergh District Council
B/10/01308/FUL	£4,189.26	Highways - Rights of Way	Sudbury	Babergh District Council
B/10/01308/FUL	£42,871.74	Highways - Development Management	Sudbury	Babergh District Council
B/10/01308/FUL	£5,000.00	Highways - Rights of Way	Sudbury	Babergh District Council
B/10/01308/FUL	£4,871.98	Highways - Rights of Way	Sudbury	Babergh District Council
B/15/00993/FUL	£4,200.00	Education	Pinewood	Babergh District Council
B/14/00804/FUL	£500.00	Highways - Travel Planning	Great Cornard	Babergh District Council
B/15/00180/OUT	£11,500.00	Highways - Rights of Way	Long Melford	Babergh District Council

B/16/00760, DC/17/04	£10,567.09	Highways - Development Management	Hadleigh	Babergh District Council
DC/17/03902/HYB	£500.00	Highways - Travel Planning	Hadleigh	Babergh District Council
DC/17/03902/HYB	£1,800.00	Highways - Travel Planning	Hadleigh	Babergh District Council
DC/17/03902/HYB	£2,840.00	Highways - Travel Planning	Hadleigh	Babergh District Council
DC/15/1128/OUT	£2,210.38	Highways - Development Management	Felixstowe	East Suffolk
DC/15/2759/FUL	£5,973.32	Highways - Public Transport	Framlingham	East Suffolk
C/10/3212	£106,759.50	Education	Hollesley	East Suffolk
C/10/1906/FUL	£4,224.00	Education	Martlesham	East Suffolk
END 1003	£11,000.00	Natural Environment and Highways Landscape	Leiston	East Suffolk
END 1003	£7,987.72	Natural Environment and Highways Landscape	Leiston	East Suffolk
END 1003	£10,611.40	Natural Environment and Highways Landscape	Leiston	East Suffolk
END 1003	£11,000.00	Natural Environment and Highways Landscape	Leiston	East Suffolk
DC/15/1128/OUT	£15,617.78	Education	Felixstowe	East Suffolk
DC/15/1128/OUT	£1,580.40	Highways - Development Management	Felixstowe	East Suffolk
DC/15/2759/FUL	£6,238.41	Highways - Rights of Way	Framlingham	East Suffolk
DC/19/1838/FUL	£3,304.69	Highways - Development Management	Melton	East Suffolk
DC/20/3264/FUL	£1,201.16	Highways - Development Management	Pettistree	East Suffolk
DC/17/1435/OUT	£190,909.79	Suffolk Police	Waldringfield	East Suffolk

C/10/1248	£38,323.62	Education	Framlingham	East Suffolk
C/10/1906/FUL	£15,745.20	Education	Martlesham	East Suffolk
Sec of State Applica	£21,429.75	Natural Environment and Highways Landscape	Leiston	East Suffolk
Sec of State Applica	£477.97	Natural Environment and Highways Landscape	Leiston	East Suffolk
Sec of State Applica	£1,936.50	Natural Environment and Highways Landscape	Leiston	East Suffolk
Sec of State Applica	£21,429.75	Natural Environment and Highways Landscape	Leiston	East Suffolk
Sec of State Applica	£21,429.75	Natural Environment and Highways Landscape	Leiston	East Suffolk
Sec of State Applica	£21,429.75	Natural Environment and Highways Landscape	Leiston	East Suffolk
DC/14/2069/FUL	£6,783.83	Education	Wenhaston with Mells Hamlet	East Suffolk
DC/14/2069/FUL	£13,247.35	Pre-School	Wenhaston with Mells Hamlet	East Suffolk
DC/16/1107/FUL	£12,044.00	Highways - Public Transport	Trimley St. Mary	East Suffolk
DC/14/1497/FUL	£17,266.82	Libraries	Saxmundham	East Suffolk
DC/14/3558/FUL - DC/	£7,453.14	Libraries	Ufford	East Suffolk
DC/15/1128/OUT	£31,072.61	Education	Felixstowe	East Suffolk
DC/15/1128/OUT	£2,399.09	Highways - Development Management	Felixstowe	East Suffolk
DC/16/0892/FUL	£4,200.00	Education	Oulton Broad	East Suffolk
DC/19/1838/FUL	£384.00	Highways - Development Management	Melton	East Suffolk
DC/19/1838/FUL	£510.48	Highways - Development Management	Melton	East Suffolk

DC/20/3264/FUL	£6,357.72	Highways - Development Management	Pettistree	East Suffolk
DC/01/0977/OUT	£5,470.58	Libraries	Oulton	East Suffolk
DC/01/0977/OUT	£153.30	Highways - Rights of Way	Oulton	East Suffolk
DC/01/0977/OUT	£2,637.10	Waste	Oulton	East Suffolk
DC/01/0977/OUT	£2,579.03	Waste	Oulton	East Suffolk
DC/01/0977/OUT	£2,653.23	Waste	Oulton	East Suffolk
DC/01/0977/OUT	£2,782.26	Waste	Oulton	East Suffolk
DC/01/0977/OUT	£2,911.29	Waste	Oulton	East Suffolk
DC/01/0977/OUT	£113,842.45	Education	Oulton	East Suffolk
DC/01/0977/OUT	£269,154.61	Education	Oulton	East Suffolk
DC/13/0649/OUT (DC/1	£1,028.37	Waste	Lowestoft	East Suffolk
DC/13/0649/OUT (DC/1	£427.79	Waste	Lowestoft	East Suffolk
DC/13/0649/OUT (DC/1	£1,289.19	Waste	Lowestoft	East Suffolk
DC/01/0977/OUT	£47.49	Highways - Rights of Way	Oulton	East Suffolk
DC/01/0977/OUT	£892.74	Waste	Oulton	East Suffolk
DC/01/0977/OUT	£149.19	Waste	Oulton	East Suffolk
DC/01/0977/OUT	£19,025.16	Education	Oulton	East Suffolk
DC/06/0179/FUL	£36,653.00	Education	Southwold	East Suffolk
IP/06/00921/OUT & 12	£9,313.93	Education	Ipswich	Ipswich Borough Council
IP/10/00867/FUL	£13,264.09	Highways - Development Management	Ipswich	Ipswich Borough Council
IP/13/00943/OUT	£640.00	Highways - Development Management	Whitton	Ipswich Borough Council
IP/13/00943/OUT	£195.03	Highways - Development Management	Whitton	Ipswich Borough Council
IP/14/00721/OUT	£2,630.53	Highways - Development Management	Ipswich	Ipswich Borough Council

IP/14/00721/OUT	£229.55	Highways - Development Management	Ipswich	Ipswich Borough Council
IP/14/00721/OUT	£800.00	Highways - Travel Planning	Ipswich	Ipswich Borough Council
IP/10/00867/FUL	£850.42	Highways - Development Management	Ipswich	Ipswich Borough Council
IP/16/00608/OUT	£54,925.37	Education	Ipswich	Ipswich Borough Council
IP/17/00981/FUL	£14,085.89	Highways - Public Transport	Ipswich	Ipswich Borough Council
IP/19/01118/FUL	£2,522.24	Highways - Development Management	Ipswich	Ipswich Borough Council
IP/19/01118/FUL	£166.69	Libraries	Ipswich	Ipswich Borough Council
DC/18/03114/FUL	£1,021.68	Highways - Rights of Way	Somersham	Mid Suffolk District Council
3655/13	£6,515.67	Highways - Development Management	Great Blakenham	Mid Suffolk District Council
3153/14	£376,475.31	Education	Barking	Mid Suffolk District Council
3153/14	£16,068.95	Waste	Barking	Mid Suffolk District Council
3150/15	£227.08	Highways - Development Management	Crowfield	Mid Suffolk District Council
3150/15	£3,264.20	Highways - Development Management	Crowfield	Mid Suffolk District Council
4963/16	£11,921.70	Highways - Development Management	Thurston	Mid Suffolk District Council
1492/15	£1,925.78	Waste	Combs	Mid Suffolk District Council

1492/15	£2,091.80	Waste	Combs	Mid Suffolk District Council
0254/15	£63,143.83	Education	Mendlesham	Mid Suffolk District Council
2028/15	£880.17	Waste	Stowmarket	Mid Suffolk District Council
DC/17/04113/OUT	£1,124.55	Highways - Development Management	Haughley	Mid Suffolk District Council
5070/16	£290,203.67	Education	Thurston	Mid Suffolk District Council
4911/16	£874.10	Highways - Development Management	Wetherden	Mid Suffolk District Council
DC/18/00233/OUT	£1,003.05	Highways - Development Management	Bramford	Mid Suffolk District Council
DC/17/02232/FUL	£185,098.39	Education	Great Barton	Mid Suffolk District Council
DC/17/02232/FUL	£6,581.36	Pre-School	Great Barton	Mid Suffolk District Council
DC/19/00301/FUL	£1,074.03	Highways - Development Management	Creeting St. Mary	Mid Suffolk District Council
DCO	£1,000.00	Natural Environment and Highways Landscape	Eye	Mid Suffolk District Council
100/04/OL, 1969/10,	£46,053.00	Fire and Rescue Service	Great Blakenham	Mid Suffolk District Council
100/04/OL, 1969/10,	£46,974.06	Fire and Rescue Service	Great Blakenham	Mid Suffolk District Council
100/04/OL, 1969/10,	£47,913.54	Fire and Rescue Service	Great Blakenham	Mid Suffolk

				District Council
0846/13	£81,034.09	Education	Elmswell	Mid Suffolk District Council
0846/13	£81,034.08	Education	Elmswell	Mid Suffolk District Council
0846/13	£85,544.68	Education	Elmswell	Mid Suffolk District Council
0846/13	£94,814.59	Education	Elmswell	Mid Suffolk District Council
0846/13	£100,703.70	Education	Elmswell	Mid Suffolk District Council
0846/13	£96,286.87	Education	Elmswell	Mid Suffolk District Council
3153/14	£11,791.72	Libraries	Barking	Mid Suffolk District Council
3150/15	£9,560.92	Highways - Development Management	Crowfield	Mid Suffolk District Council
3150/15	£849.86	Highways - Development Management	Crowfield	Mid Suffolk District Council
4963/16	£8,044.05	Highways - Development Management	Thurston	Mid Suffolk District Council
4963/16	£500.00	Highways - Travel Planning	Thurston	Mid Suffolk District Council
4963/16	£1,800.00	Highways - Travel Planning	Thurston	Mid Suffolk District Council
4963/16	£2,410.00	Highways - Travel Planning	Thurston	Mid Suffolk District Council

2722/13	£520.00	Highways - Travel Planning	Stowmarket	Mid Suffolk District Council
2722/13	£700.00	Highways - Travel Planning	Stowmarket	Mid Suffolk District Council
2722/13	£2,600.00	Highways - Travel Planning	Stowmarket	Mid Suffolk District Council
2722/13	£500.00	Highways - Travel Planning	Stowmarket	Mid Suffolk District Council
1850/13	£1,000.00	Highways - Travel Planning	Stowmarket	Mid Suffolk District Council
3679/13	£287.28	Highways - Public Transport	Barking	Mid Suffolk District Council
2986/15	£32,777.02	Libraries	Bramford	Mid Suffolk District Council
2986/15	£500.00	Highways - Travel Planning	Bramford	Mid Suffolk District Council
2028/15	£3,727.77	Libraries	Stowmarket	Mid Suffolk District Council
5007/16	£8,603.79	Highways - Rights of Way	Stowmarket	Mid Suffolk District Council
DC/17/04113/OUT	£640.00	Highways - Development Management	Haughley	Mid Suffolk District Council
DC/17/04113/OUT	£4,674.43	Highways - Development Management	Haughley	Mid Suffolk District Council
DC/17/04113/OUT	£665.69	Highways - Development Management	Haughley	Mid Suffolk District Council

4911/16	£1,868.33	Highways - Development Management	Wetherden	Mid Suffolk District Council
0019/17	£500.00	Highways - Travel Planning	Stowmarket	Mid Suffolk District Council
DC/18/00233/OUT	£640.00	Highways - Development Management	Bramford	Mid Suffolk District Council
DC/18/00233/OUT	£3,460.41	Highways - Development Management	Bramford	Mid Suffolk District Council
1832/17	£32.52	Highways - Development Management	Claydon	Mid Suffolk District Council
DC/19/00301/FUL	£165.91	Highways - Development Management	Creeting St. Mary	Mid Suffolk District Council
DC/21/00407/HYB	£500.00	Highways - Travel Planning	Badley	Mid Suffolk District Council
SE/09/1283/OUT	£75,261.64	Education	Haverhill	West Suffolk
DC/14/1881/HYB	£145.73	Corporate Property	Rushbrooke with Rougham	West Suffolk
DC/14/1881/HYB	£53,040.00	Highways - Public Transport	Rushbrooke with Rougham	West Suffolk
SE/13/0526	£550.00	Libraries	Fornham All Saints	West Suffolk
SE/13/0526	£3,592.69	Waste	Fornham All Saints	West Suffolk
DC/16/0112/FUL	£3,975.66	Highways - Public Transport	Ingham	West Suffolk
SE/09/1283/OUT	£500.00	Highways - Travel Planning	Haverhill	West Suffolk
SE/09/1283/OUT	£1,000.00	Highways - Travel Planning	Haverhill	West Suffolk
DC/15/0689/OUT	£3,687.32	Libraries	Bury St Edmunds	West Suffolk
SE/11/1061 to 1064	£1,000.00	Highways - Travel Planning	Haverhill	West Suffolk
SE/11/1061 to 1064	£1,000.00	Highways - Travel Planning	Haverhill	West Suffolk

SE/01/3365/P	£34,375.86	Highways - Development Management	Haverhill	West Suffolk
SE/01/3365/P	£69,466.37	Highways - Development Management	Haverhill	West Suffolk
DC/14/1881/HYB	£386,187.14	Education	Rushbrooke with Rougham	West Suffolk
DC/14/1881/HYB	£344,192.85	Education	Rushbrooke with Rougham	West Suffolk
DC/14/1881/HYB	£76,116.92	Education	Rushbrooke with Rougham	West Suffolk
DC/14/1881/HYB	£1,000.00	Highways - Travel Planning	Rushbrooke with Rougham	West Suffolk
DC/14/1881/HYB	£59,278.44	Highways - Travel Planning	Rushbrooke with Rougham	West Suffolk
DC/14/1881/HYB	£9,600.00	Highways - Travel Planning	Rushbrooke with Rougham	West Suffolk
DC/14/1881/HYB	£1,800.00	Highways - Travel Planning	Rushbrooke with Rougham	West Suffolk
DC/14/1881/HYB	£38,994.00	Highways - Public Transport	Rushbrooke with Rougham	West Suffolk
SE/12/1329/OUT	£9.87	Highways - Travel Planning	Haverhill	West Suffolk
SE/12/1329/OUT	£9.87	Highways - Travel Planning	Haverhill	West Suffolk
SE/12/1329/OUT	£9.87	Highways - Travel Planning	Haverhill	West Suffolk
SE/12/1329/OUT	£9.87	Highways - Travel Planning	Haverhill	West Suffolk
SE/12/1329/OUT	£4.39	Highways - Travel Planning	Haverhill	West Suffolk
SE/12/1329/OUT	£4.39	Highways - Travel Planning	Haverhill	West Suffolk
SE/12/1329/OUT	£4.39	Highways - Travel Planning	Haverhill	West Suffolk
SE/12/1329/OUT	£4.39	Highways - Travel Planning	Haverhill	West Suffolk
SE/13/0526	£43,667.41	Highways - Development Management	Fornham All Saints	West Suffolk
SE/13/0526	£24,335.21	Libraries	Fornham All Saints	West Suffolk
SE/13/0526	£933,229.78	Education	Fornham All Saints	West Suffolk
SE/13/0526	£1,879.09	Waste	Fornham All Saints	West Suffolk
DC/13/0711/FUL	£24,362.00	Education	Great Barton	West Suffolk
DC/13/0906/FUL	£4,000.00	Pre-School	Bury St Edmunds	West Suffolk
DC/16/0300/OUT	£1,222.22	Libraries	Barrow-cum-Denham	West Suffolk

DC/16/0112/FUL	£22,564.56	Education	Ingham	West Suffolk
DC/16/0112/FUL	£407.53	Highways - Public Transport	Ingham	West Suffolk
DC/15/0087 & 16/0508	£500.00	Highways - Travel Planning	Bury St Edmunds	West Suffolk
DC/17/1721/FUL	£368.00	Libraries	Wickhambrook	West Suffolk
DC/16/0267/FUL	£5,777.14	Libraries	Bury St Edmunds	West Suffolk
DC/16/0267/FUL	£22,658.00	Education	Bury St Edmunds	West Suffolk
DC/15/2579/FUL	£600.00	Highways - Travel Planning	Haverhill	West Suffolk
DC/16/0730/FUL	£770.07	Libraries	Bury St Edmunds	West Suffolk
DC/16/2526/FUL	£500.00	Highways - Travel Planning	Bury St Edmunds	West Suffolk
DC/17/1047/OUT	£1,354.56	Libraries	Bury St Edmunds	West Suffolk
DC/17/0688/FUL	£259.87	Libraries	Bury St Edmunds	West Suffolk
DC/17/2539/FUL	£226.05	Libraries	Haverhill	West Suffolk
DC/19/0479/FUL	£433.39	Libraries	Haverhill	West Suffolk
DC/19/1623/FUL	£194.29	Libraries	Bury St Edmunds	West Suffolk
DC/18/2299/FUL	£593.77	Libraries	Haverhill	West Suffolk
F/2013/0257/HYB	£334.88	Highways - Development Management	Herringswell	West Suffolk
F/2013/0257/HYB	£20,000.00	Libraries	Herringswell	West Suffolk
F/2013/0061/HYB	£13,686.00	Education	Kentford	West Suffolk
DC/14/2219/FUL	£38,399.78	Pre-School	Brandon	West Suffolk
DC/15/0840/S106R	£6,000.00	Pre-School	Beck Row, Holywell Row and Kenny Hill	West Suffolk
DC/17/1597/FUL	£263.02	Highways - Development Management	Newmarket	West Suffolk
F/2013/0257/HYB	£17,036.00	Libraries	Herringswell	West Suffolk
F/2013/0257/HYB	£51,878.15	Libraries	Herringswell	West Suffolk
F/2013/0257/HYB	£500.00	Highways - Travel Planning	Herringswell	West Suffolk

F/2006/0254/OUT	£1,644.00	Highways - Public Transport	Beck Row, Holywell Row and Kenny Hill	West Suffolk
F/2007/0475/FUL	£3,298.40	Highways - Public Transport	Lakenheath	West Suffolk
F/2013/0061/HYB	£17,121.74	Education	Kentford	West Suffolk
F/2013/0061/HYB	£18,839.04	Education	Kentford	West Suffolk
DC/14/2219/FUL	£7,262.61	Libraries	Brandon	West Suffolk
DC/14/2219/FUL	£7,867.11	Libraries	Brandon	West Suffolk
DC/14/2219/FUL	£1,443.45	Highways - Rights of Way	Brandon	West Suffolk
DC/14/1206/FUL	£419.97	Highways - Travel Planning	Beck Row, Holywell Row and Kenny Hill	West Suffolk
DC/17/1107/FUL	£611.71	Libraries	Beck Row, Holywell Row and Kenny Hill	West Suffolk
DC/16/0596/OUT	£29,627.52	Libraries	Red Lodge	West Suffolk
DC/17/0717/FUL	£209.46	Libraries	Beck Row, Holywell Row and Kenny Hill	West Suffolk
DC/17/1597/FUL	£22,030.60	Highways - Development Management	Newmarket	West Suffolk
DC/17/1614/FUL	£182.09	Libraries	Newmarket	West Suffolk
DC/18/2495/FUL	£256.00	Libraries	Newmarket	West Suffolk
	£5,663,537.39			

Appendix 4 – Money received under any planning obligations which was allocated by the authority but not spent during the reporting year.

LPA Reference	Amount (£)	Obligation Description	Parish	District
B/15/01718/OUT	284,509.20	Temporary classroom contribution	Acton	Babergh District Council
B/15/01718/OUT	1,139,340.54	Primary School Contribution	Acton	Babergh District Council
B/15/01718/OUT	227,607.36	Pre School Contribution	Acton	Babergh District Council
B/12/00748/FUL	184.22	Highways Improvements Contribution (Bus Stop)	Lavenham	Babergh District Council
B/12/00748/FUL	165.60	Highways Improvements Contribution (Footway Works)	Lavenham	Babergh District Council
B/10/01308/FUL	282.58	Footpath Contribution	Sudbury	Babergh District Council
B/15/00993/FUL	16,058.28	New Bus Stop contribution	Pinewood	Babergh District Council
B/15/00993/FUL	1,138.04	Footpath diversion contribution	Pinewood	Babergh District Council
B/15/00993/FUL	326,299.31	Education contribution	Pinewood	Babergh District Council
B/15/00993/FUL	14,129.85	Library contribution (Chantry)	Pinewood	Babergh District Council

B/15/00993/FUL	38,137.36	Early Years contribution	Pinewood	Babergh District Council
B/15/00993/FUL	1,122.70	Travel Plan Evaluation and support contribution	Pinewood	Babergh District Council
DC/19/05419/HYB	50,546.45	Highways Improvement Contribution	Hadleigh	Babergh District Council
DC/19/05419/HYB	15,163.93	Highways PROW Contribution	Hadleigh	Babergh District Council
B/16/00802/FUL	4,703.58	Public Transport Infrastructure Contribution	Copdock and Washbrook	Babergh District Council
B/16/00802/FUL	14,698.70	Highways Infrastructure Contribution	Copdock and Washbrook	Babergh District Council
B/15/01490/OUT	10,000.00	High school provision	Hintlesham	Babergh District Council
B/15/01490/OUT	34,185.49	High school provision	Hintlesham	Babergh District Council
DC/17/03902/HYB	204,305.64	Early Years Contribution	Hadleigh	Babergh District Council
DC/17/03902/HYB	136,792.45	Strategic Highways contribution	Hadleigh	Babergh District Council
DC/18/00606/OUT	74,161.60	Revised Early Years Contribution	Long Melford	Babergh District Council
DC/18/00606/OUT	33,257.10	Footpath Contribution	Long Melford	Babergh District Council

DC/18/05177/FUL	27,786.14	Footpath contribution	Brantham	Babergh District Council
DC/19/01973/OUT	14,861.25	Public Rights of Way contribution	Brantham	Babergh District Council
DC/19/01973/OUT	64,800.00	School Transport contribution	Brantham	Babergh District Council
DC/22/00754/FUL	11,500.00	Highways Contribution - TRO	Bures St. Mary	Babergh District Council
DC/17/1435/OUT	190,909.79	Speed Management Contribution	Waldringfield	East Suffolk
DC/17/1435/OUT	11,349.69	Off site Highways Mitigation Survey contribution & SCC survey	Waldringfield	East Suffolk
DC/17/1435/OUT	17,251.53	Betts Avenue contribution - Bridleway	Waldringfield	East Suffolk
Sec of State Applica	24,078.71	Accessibility Contribution	Leiston	East Suffolk
C12/2123	40.36	TRO contribution	Pettistree	East Suffolk
END 1003	11,812.38	Annual AONB Fund	Leiston	East Suffolk
C/12/2573/FUL	517.03	Library Contribution	Aldeburgh	East Suffolk
DC/13/2933/OUT	15,689.89	Primary School Contribution (Yoxford Primary School)	Darsham	East Suffolk

DC/13/2933/OUT	19,118.42	Primary School Contribution (Yoxford Primary School)	Darsham	East Suffolk
DC/13/2933/OUT	19,699.51	Primary School Contribution (Yoxford Primary School)	Darsham	East Suffolk
DC/16/2104/OUT	25,925.08	Public Transport Infrastructure Contribution	Leiston	East Suffolk
DC/16/2104/OUT	7,907.15	PROW contribution	Leiston	East Suffolk
DC/16/2119/OUT	26,763.80	Public Transportation Contribution	Trimley St. Martin	East Suffolk
DC/16/2119/OUT	23,512.25	Primary School Land Contribution	Trimley St. Martin	East Suffolk
DC/16/2119/OUT	44,970.68	Pre-school contribution	Trimley St. Martin	East Suffolk
DC/16/2119/OUT	188,493.56	Primary School Contribution	Trimley St. Martin	East Suffolk
DC/19/3196/FUL	17,397.28	Speed Limit Reduction and Improvement Works	Kelsale cum Carlton	East Suffolk
DC/20/3890/OUT	5,000.00	Public Footpath contribution	Rendlesham	East Suffolk

DC/20/3264/FUL	36,691.76	S106 Travel Plan Contribution	Pettistree	East Suffolk
DC/01/0977/OUT	11,159.27	Strategic Transport contribution	Oulton	East Suffolk
DC/01/0977/OUT	36,391.13	Strategic Transport contribution	Oulton	East Suffolk
DC/01/0977/OUT	1,864.92	Strategic Transport contribution	Oulton	East Suffolk
DC/01/0977/OUT	8,733.87	Library contribution	Oulton	East Suffolk
DC/01/0977/OUT	2,678.23	Library contribution	Oulton	East Suffolk
DC/01/0977/OUT	447.58	Library contribution	Oulton	East Suffolk
DC/01/0977/OUT	7,811.49	Bus Service contribution	Oulton	East Suffolk
DC/01/0977/OUT	25,473.79	Bus Service contribution	Oulton	East Suffolk
DC/01/0977/OUT	1,305.44	Bus Service contribution	Oulton	East Suffolk
DC/01/0977/OUT	1,673.89	Cycle and Footpath contribution	Oulton	East Suffolk
DC/01/0977/OUT	5,458.67	Cycle and Footpath contribution	Oulton	East Suffolk
DC/01/0977/OUT	279.74	Cycle and Footpath contribution	Oulton	East Suffolk

DC/01/0977/OUT	892.74	Waste contribution	Oulton	East Suffolk
DC/01/0977/OUT	2,911.29	Waste contribution	Oulton	East Suffolk
DC/01/0977/OUT	149.19	Waste contribution	Oulton	East Suffolk
DC/01/0977/OUT	113,842.45	Education contribution	Oulton	East Suffolk
DC/01/0977/OUT	269,154.61	Education contribution	Oulton	East Suffolk
DC/01/0977/OUT	19,025.16	Education contribution	Oulton	East Suffolk
DC/17/0633/FUL	7,971.61	Traffic Regulation Order Contribution	Lowestoft	East Suffolk
W402/19, C97/1047	1,030.97	Annual Hill Road Maintenance Contribution	Wangford with Henham	East Suffolk
DC/18/4312/FUL	5,640.24	Bus Shelter Contribution (from DOV)	Beccles	East Suffolk
DC/20/5224/FUL	28,602.29	Secondary School Transport contribution	Halesworth	East Suffolk
DC/20/5224/FUL	2,794.56	Bus Stop Contribution	Halesworth	East Suffolk
IP/16/00608/OUT	108,364.66	Westerfield Station Improvements contribution	Ipswich	Ipswich Borough Council
IP/16/00608/OUT	98,809.12	Off-site sustainable transport contribution	Ipswich	Ipswich Borough Council

IP/16/00608/OUT	54,925.37	Primary School Design Fee	Ipswich	Ipswich Borough Council
IP/16/00608/OUT	66,377.66	Public Rights of Way contribution	Ipswich	Ipswich Borough Council
IP/17/00570/FUL	10,000.00	TRO Contribution	Ipswich	Ipswich Borough Council
IP/19/00148/OUT	12,191.98	TRO contribution	Ipswich	Ipswich Borough Council
IP/19/01118/FUL	17,289.56	Early Years Contribution	Ipswich	Ipswich Borough Council
IP/19/01118/FUL	17,289.56	Primary School Contribution	Ipswich	Ipswich Borough Council
IP/19/01118/FUL	166.69	Libraries Contribution	Ipswich	Ipswich Borough Council
4963/16	15,930.37	DOV - Travel Plan Support contribution	Thurston	Mid Suffolk District Council
3679/13	19,981.95	Bus Stop Contribution	Barking	Mid Suffolk District Council
DC/18/02146/OUT	45,825.47	Secondary School Transport Contribution	Elmswell	Mid Suffolk District Council
DC/18/02146/OUT	208,271.46	Primary Education Contribution	Elmswell	Mid Suffolk District Council
DC/18/02146/OUT	82,265.10	Early Years Contribution	Elmswell	Mid Suffolk District Council
5070/16	290,203.67	Primary Education Contribution	Thurston	Mid Suffolk District Council

4911/16	283.28	S106 Travel Plan Evaluation and Support Contribution	Wetherden	Mid Suffolk District Council
1832/17	217,064.37	New Primary School Build Cost Contribution	Claydon	Mid Suffolk District Council
1832/17	77,308.79	Travel Plan Support (from DOV)	Claydon	Mid Suffolk District Council
DC/17/02232/FUL	185,098.39	S106 - Education Contribution	Great Barton	Mid Suffolk District Council
DC/19/01482/FUL	10,272.73	Highways contribution (TRO)	Stowmarket	Mid Suffolk District Council
DC/19/01401/OUT	199,381.34	Passenger Transport contribution	Bramford	Mid Suffolk District Council
DC/19/01401/OUT	23,456.63	Sproughton Highways Mitigation (flexible) Zebra D1048	Bramford	Mid Suffolk District Council
DC/19/01401/OUT	16,419.64	Sproughton Highways Mitigation (flexible) Crossings D1049	Bramford	Mid Suffolk District Council
DC/19/01401/OUT	42,221.94	Sproughton Highways Mitigation (flexible) Beagle D1050	Bramford	Mid Suffolk District Council

DC/19/01401/OUT	70,369.89	Sproughton Highways Mitigation (flexible) Cycle Link D1051	Bramford	Mid Suffolk District Council
DC/19/03486/OUT	84,603.66	Cycleway / Bridleway contribution	Thurston	Mid Suffolk District Council
DC/19/01356/OUT	29,768.60	Primary School Transport contribution	Badwell Ash	Mid Suffolk District Council
DC/19/01356/OUT	15,947.46	Secondary School Transport contribution	Badwell Ash	Mid Suffolk District Council
DC/19/01356/OUT	7,752.24	Footpath contribution	Badwell Ash	Mid Suffolk District Council
DC/20/04723/FUL	1,066.19	S106 - Travel Plan evaluation and support contribution	Stowmarket	Mid Suffolk District Council
DC/20/04723/FUL	103,297.12	Primary education travel contribution	Stowmarket	Mid Suffolk District Council
DC/21/02982/FUL	15,373.96	Highways Improvements Contribution (TRO)	Debenham	Mid Suffolk District Council
SE/09/1283/OUT	5,884.96	Footpath and Cycle Links Contribution	Haverhill	West Suffolk

SE/09/1283/OUT	326.23	Travel Plan Monitoring and Support Contribution	Haverhill	West Suffolk
SE/09/1283/OUT	151.24	Car Share Contribution	Haverhill	West Suffolk
SE/09/1283/OUT	2,394.85	RTPI screen contribution	Haverhill	West Suffolk
SE/09/1283/OUT	316.44	TRO contribution	Haverhill	West Suffolk
SE/09/1283/OUT	704.94	Offsite Cycle Stands Contribution	Haverhill	West Suffolk
SE/09/1283/OUT	33,861.34	Education Contribution	Haverhill	West Suffolk
DC/15/0689/OUT	40,460.05	Highways Contribution	Bury St Edmunds	West Suffolk
DC/15/0689/OUT	84,970.67	Highways Contribution	Bury St Edmunds	West Suffolk
DC/15/0689/OUT	1,176.88	Highways Contribution	Bury St Edmunds	West Suffolk
DC/15/0689/OUT	79,043.66	Pre-school contribution (Guildhall Feoffment)	Bury St Edmunds	West Suffolk
DC/15/0689/OUT	1,094.79	Pre-school contribution (Guildhall Feoffment)	Bury St Edmunds	West Suffolk

DC/15/0689/OUT	87,006.82	Primary School Contribution (St Edmundsbury CEVA Primary)	Bury St Edmunds	West Suffolk
DC/15/0689/OUT	409.77	Primary School Contribution (St Edmundsbury CEVA Primary)	Bury St Edmunds	West Suffolk
DC/14/1881/HYB	83,746.41	Travel Plan contribution	Rushbrooke with Rougham	West Suffolk
DC/14/1881/HYB	386,187.14	Primary Education contribution (Abbotts Green Primary School)	Rushbrooke with Rougham	West Suffolk
DC/14/1881/HYB	344,192.85	Secondary School contribution Sec (new Moreton Hall Secondary)	Rushbrooke with Rougham	West Suffolk
DC/14/1881/HYB	76,116.92	Secondary School contribution 6th Form (new Moreton Hall Sec)	Rushbrooke with Rougham	West Suffolk
SE/13/0526	1,980.54	Waste Infrastructure contribution	Fornham All Saints	West Suffolk
SE/13/0526	1,879.09	Waste Infrastructure contribution	Fornham All Saints	West Suffolk

SE/13/0526	1,000.00	Smarter Choices contribution	Fornham All Saints	West Suffolk
SE/13/0526	229,311.28	Sixth Form contribution	Fornham All Saints	West Suffolk
SE/13/0526	6,906.92	Library contribution	Fornham All Saints	West Suffolk
SE/13/0526	7,576.86	Library contribution	Fornham All Saints	West Suffolk
SE/13/0526	10,168.74	Transport Flow contribution	Fornham All Saints	West Suffolk
SE/13/0526	933,229.78	Secondary Education contribution	Fornham All Saints	West Suffolk
DC/15/2298/FUL	26,731.11	S106 - Rights of Way contribution	Hopton	West Suffolk
DC/15/2151/OUT	141,234.77	1st Pre School Contribution	Kedington	West Suffolk
DC/15/2151/OUT	984,403.67	1 Form Primary School Contribution	Kedington	West Suffolk
DC/15/2151/OUT	1,115.02	Travel Plan Contribution	Kedington	West Suffolk
DC/17/1047/OUT	216,369.88	Secondary School Contribution	Bury St Edmunds	West Suffolk
DC/17/1047/OUT	208,858.87	Primary School Contribution	Bury St Edmunds	West Suffolk
DC/17/1047/OUT	42,666.80	Sixth Form Contribution	Bury St Edmunds	West Suffolk

DC/17/1047/OUT	71,440.09	Early Years Contribution	Bury St Edmunds	West Suffolk
DC/17/1047/OUT	1,354.56	Library Contribution	Bury St Edmunds	West Suffolk
DC/18/1187/FUL	63,159.48	Sixth Form Contribution (Samuel Ward Academy)	Haverhill	West Suffolk
DC/18/1187/FUL	257,646.61	Primary School Contribution (New)	Haverhill	West Suffolk
DC/18/1187/FUL	96,940.57	Early Years Capital Contribution	Haverhill	West Suffolk
DC/18/1187/FUL	1,472.15	Library Contribution (Haverhill)	Haverhill	West Suffolk
DC/18/1187/FUL	7,403.03	Bus Stop Improvement Contribution (Howe Road)	Haverhill	West Suffolk
DC/19/0479/FUL	26,789.97	Pre-school Contribution	Haverhill	West Suffolk
DC/19/0479/FUL	433.39	Library contribution	Haverhill	West Suffolk
DC/19/0479/FUL	21,333.17	Education Contribution (6th form)	Haverhill	West Suffolk
DC/19/0479/FUL	98,349.93	Education Contribution (Secondary)	Haverhill	West Suffolk

F/2000/282	761.80	Fiveways Roundabout Works Contribution	Herringswell	West Suffolk
F/2000/282	67.81	Public Transport Contribution	Herringswell	West Suffolk
F/98/402, F/2001/030	85.43	Highways contribution	Red Lodge	West Suffolk
DC/19/2482/FUL	86,873.80	Primary School contribution	Mildenhall	West Suffolk
DC/19/2482/FUL	7,176.36	Library Contribution	Mildenhall	West Suffolk
DC/19/2482/FUL	26,537.02	Secondary School Contribution	Mildenhall	West Suffolk
DC/19/2482/FUL	55,138.35	Pre-school contribution	Mildenhall	West Suffolk
DC/16/0596/OUT	1,244.83	Travel Plan Evaluation and Support contribution	Red Lodge	West Suffolk
DC/21/0152/FUL	1,176.15	Travel Plan Contribution	Exning	West Suffolk
DC/17/1614/FUL	27,724.85	Primary School Contribution	Newmarket	West Suffolk
DC/17/1614/FUL	9,483.26	Early Years Contribution	Newmarket	West Suffolk
DC/17/1614/FUL	182.09	Library Contribution	Newmarket	West Suffolk

DC/20/1969/FUL	1,211.71	Library Contribution	Beck Row, Holywell Row and Kenny Hill	West Suffolk
DC/20/1969/FUL	28,490.83	Primary School Contribution	Beck Row, Holywell Row and Kenny Hill	West Suffolk
DC/20/1969/FUL	24,678.44	Secondary School Contribution	Beck Row, Holywell Row and Kenny Hill	West Suffolk
DC/20/1969/FUL	11,396.78	Pre- School Contribution	Beck Row, Holywell Row and Kenny Hill	West Suffolk
DC/21/0335/FUL	16,509.15	TRO Contribution	Newmarket	West Suffolk
Total	£11,122,279.12			

Appendix 5 – Section 278 Agreements

Table A - Infrastructure Provision agreed during the reporting year through Section 278 Agreements

S278 AGREEMENT REFERENCE	AGREEMENT DATE	LOCATION	INFRASTRUCTURE	BOND
A\S278\0067\18	02/03/2023	Land at Eye Airfield, Castleton Way, Eye	New Roundabout junction on Castleton Way to serve residential development.	£464,123.00
S278F/0039/22	06/02/2023	Land South of Slough Road Brantham	Proposed new junction with access to development Upgrade of footway from development and joining existing permissive route.	£49,403.38
S278F/0086/2020	30/01/2023	Land North of The Broadway Badwell Ash	Construction of two new vehicular accesses, road widening and resurfacing.	£179,495.68
S278M/0226/21	26/01/2023	Land South of Birch Avenue, Pretyman Avenue Bacton	Construction of new access for residential development	£86,339.00
S278A/0112/22	23/01/2023	Camstar Herbs Ltd Chestnuts Farm Langton Green Eye	Creation of vehicular access.	£25,080.00
S278F/0092/21	07/12/2022	Land East of Turkey Hall Lane Bacton	Improvements to Turkey Hall Lane including footway links	£99,336.97
S278F/0045/22	21/11/2022	Cedars Park, Gun Cotton Way, Stowmarket	220 m of new 2m wide Footway & Street Lighting works.	£65,450.00
S278A/0038/21	21/11/2022	The Street Darsham	Construction of new access for residential development and footway improvements	£24,479.56

S278F/0009/21	17/11/2022	Framlingham Road Laxfield	Construction of new access for residential development	£27,500.00
S278A/0072/22	16/11/2022	Rose Cottage Bullen Lane Bramford	Installation of new footway	£ 8,030.00
S278A/0069/22	09/11/2022	Land South of Gatton House Hadleigh Road East Bergholt	Construction of new access for residential development and associated footway works	£21,258.60
S278F/0122/21	26/10/2022	Marlows Home & Garden Hepworth Road Stanton	Construction of new junction into development with road safety improvement measures along Hepworth Road.	£75,275.07
S278F/0076/21	06/10/2022	Household Waste Recycling Centre Foxhall	Construction of right-turn lane to Foxhall Household Waste Site. (Memorandum of Understanding)	-
S278F/0224/21	21/09/2022	Land to the North & West of School Road Elmswell	Construction of new access for residential development, improvements to School Road and associated footway works	£937,632.30
S278M/0079/22	12/09/2022	Perkins Way, Tostock,	Construction of new access for residential development and associated footway works	£10,895.50
S278F/0174/21	05/09/2022	Land north of Church Road Bacton Stowmarket	Construction of new access for residential development and associated footway works	£27,500.00
S278F/0172/2020	24/08/22	School Lane Bawdsey	Localised carriageway widening to 5m and construction of new 1.2m footway.	£80,344.59
S278F/0121/21	22/08/2022	New Street Stradbroke	Construction of new access for residential development and associated footway works	£16,500.00

S278F/0148/21	13/07/2022	Henley Road Ipswich	New footway extension to serve new care home	£22,018.00
S278F/0108/20	31/08/2022	Land to the North and South of Poplar Lane, Sproughton	Carriageway widening and footway works on Poplar Lane	£656,982.70
S278F/0007/22	01/07/2022	Crowfield Road Stonham Aspal	Crowfield Road & A1120 Junction improvements.	£137,500.00
S278A/0163/21	15/06/2022	Handford Road Ipswich	Remove existing and construct new access into development, widening of existing footpath within site boundary	£ 8,250.00
S278F/1103/2019	09/05/2022	Walton High St Felixstowe	Construction of new Zebra Crossing and associated works near Maidstone Road Junction	£112,101.00
S278/1065/2019	09/05/2022	Watering Lane junction with A1094 Snape	New access and junction widening plus relocation of give way lines.	£13,200.00
S278A/0193/21	04/05/2022	Woodbridge Road Bredfield	New access with frontage footways and associated drainage.	£24,750.00
S278A/0045/2020	04/05/2022	North of Wren Business Centre, Wrentham	New industrial access from A12	£26,345.00
S278A/0157/21	28/04/2022	Land adjoining the Village Hall Manningtree Road Stutton	Construction of new access for residential development and associated footway works	£18,463.50
S278A/0029/22	27/04/2022	Orchid Meadow, The Chestnuts, Stocks Corner, Beck Row	Construction of new access for residential development and associated footway works	£20,702.22
A\S278\0046\18	22/04/2022	Lower Brook Street, Ipswich	Remove existing access and widen	£11,720.67

			existing footway	
A\S278\0002\18	20/04/2022	Land Rear of 34-48, Old Station Road, Halesworth	Construction of new access for residential development and associated footway works	£50,065.27
S278F/0059/21	20/04/2022	Gateway 14 Mill Lane Stowmarket	Land at Mill Lane, Stowmarket (Gateway 14) Alterations to Gun Cotton Way Roundabout and Installation of Toucan crossing on A1120,	£382,867.71
S278A/0037/21	06/04/2022	Tannery Road Combs	Construction of new access for residential development and associated footway works	£26,400.00

Table B – Completed Infrastructure Provisions, as outlined in S278 Agreements outlines the infrastructure provisions that have been completed, and funding received, through a highway's agreement under 278 of the Highways Act 1980 this financial year.

S278 AGREEMENT REFERENCE	ADOPTION DATE	LOCATION	INFRASTRUCTURE	BOND
A\S278\0062\17	24/02/2023	Land off Mallard Way, Hollesley	Amendments to turning head	£19,168.41
A\S278\0018\18	23/02/2023	Part Land South of Fairview Farm, Norwich Road, Halesworth	Construction of new access for residential development and associated footway works	£27,500.00
A\S278\0085\17	09/01/2023	Former Gas Works, Carr Avenue, Leiston	Construction of new access for residential development and associated footway works	£16,500.00
A\S278\0001\18	25/11/2022	Land off Monckton Avenue, Lowestoft	Construction of new access for residential development and associated footway works	£ 8,001.50
S278/1026/2019	07/09/2022	Saxtead Road Framlingham	Construction of new access for residential development and	£22,962.50

			associated footway works	
A\S278\0022\17	25/08/2022	Land west of Street Farm, School Road, Tunstall	Construction of new access for residential development and associated footway works	£33,000.00
S278/1018/2019	22/08/2022	Main Rd Martlesham	Construction of new access for Gospal Hall	£36,740.00
A\S278\0074\18	13/07/2022	Police Station, Leiston Road, Aldeburgh	Access works, layby works and new Zebra Crossing	£71,500.00
A\S278\0050\16	01/07/2022	Land at Cucumber Lane, Beccles	New access including footway scheme on Cucumber Lane and Oak Lane.	£27,500.00
S278A/0049/2017	23/06/2022	The Gables Thetford Road Ingham	New access to the highway and footway widening	£26,950.00
S278F/0078/2019	27/05/2022	Rose Hill Farm A1094 - Friday Street Farnham	Access for new Crop Store/Farm Office Building, and Auxiliary Equipment/Supplies Shed.	£13,750.00
S278/1071/2019	12/05/2022	Newnham Business Park Saxstead Road Framlingham	New access including bellmouth, drainage and footway and additional footway adjacent to New Street	£121,550.00

For further information about this report, please contact:
planningcontributions.admin@suffolk.gov.uk



If you need help to understand this information in another language please call 03456 066 067.

Se precisar de ajuda para ler estas informações em outra língua, por favor telefone para o número abaixo. 03456 066 067

Portuguese

Jeigu jums reikia šios informacijos kita kalba, paskambinkite 03456 066 067

Lithuanian

Jeżeli potrzebujesz pomocy w zrozumieniu tych informacji w swoim języku zadzwoń na podany poniżej numer. 03456 066 067

Polish

Dacă aveți nevoie de ajutor pentru a înțelege această informație într-o altă limbă, vă rugăm să telefonați la numărul 03456 066 067

Romanian

এই লেখাটি যদি অন্য ভাষাতে বুঝতে চান তাহলে নিচের নম্বরে ফোন করুন 03456 066 067

Bengali

Если для того чтобы понять эту информацию Вам нужна помощь на другом языке, позвоните, пожалуйста, по телефону 03456 066 067

Russian

If you would like this information in another format, including audio or large print, please call 03456 066 067.