



North Elevation



South Elevation



East Elevation



West Elevation

PUBLIC CONSULTATION

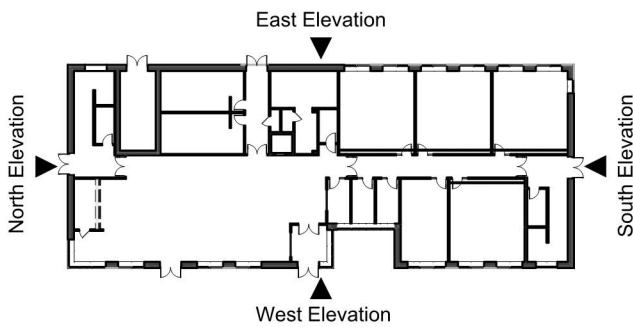
Proposed Elevations

The proposals echo the materials used on the DfE block directly adjacent to the proposed teaching block. This establishes a clear visual link with the current school architecture and maintains consistency across the site.

The building's base will be constructed using buff brickwork, carefully matched to that used in the existing building to ensure cohesion across the site.

Above the brickwork, the elevation will feature a rendered finish, with bold yellow panels introduced between windows to reflect the existing building design and celebrate the Trust's branding. These elements help animate the facade and bring a dynamic quality to the composition.

KEY PLAN NTS



MATERIAL KEY

- | | |
|--|--------------------------|
| ① Buff brickwork - Ibstock Mixed Buff Rustic | ⑥ Doors - Dark grey |
| ② Render - Grey | ⑦ Box detail - Dark grey |
| ③ Render - Yellow | ⑧ Box detail - Yellow |
| ④ Render - Orange | ⑨ Flashing - Dark grey |
| ⑤ Windows - Dark grey | |



Proposed External Visual

Please comment online at www.suffolk.gov.uk/consultations or via email to schools@suffolk.gov.uk.