

COVID-related pupil/student absence –

The guidance below addresses what a positive or negative test result means for your child and your household, and the support available to you.

What happens if a close contact at school / college of my child tests positive?

- They can consent to take part in 'serial testing' where they are tested daily for 7 days
- This will enable them to stay in school / college if they test negative
- If you or they do not wish to take part, they will need to self-isolate

What if my child tests **negative** for COVID-19 in the serial testing?

- There will be no need for them to self-isolate and you can remain in school / college as normal
- Social distancing and face coverings where appropriate will remain necessary

What do I need to do if my child tests **positive** for COVID-19?

- Do not send your child to school/college
- They will need to take a further 'PCR test' (similar to those done in testing sites) to confirm the positive result, they will be able to do this at school/college or take a test kit home.
- Contact the school / college to inform us of the PCR test result which you will receive via text / email
- Your child will need to self-isolate for a minimum of 10 days according to guidelines.

How does my child testing positive impact the rest of my household?

- Your household will have to self-isolate for 10 days
- Follow the [latest government guidance](#).

When can my child return to school / college after testing positive for COVID-19?

- Your child can stop self-isolating and return to school / college on day 11 if they've not had a high temperature for 48 hours and are well
- They can return after 10 days even if they have a cough or loss of taste/smell as these symptoms can last for several weeks

COVID-related pupil/student absence

The guidance below addresses what a positive or negative test result means for your child and your household, and the support available to you.

What does a positive result mean for my child's education?

We have a strong commitment to ensuring all pupils can access a wide range of learning resources remotely and will continue to support their education whilst they are self-isolating.

Additional information can be found <https://bit.ly/covidhomelearning>



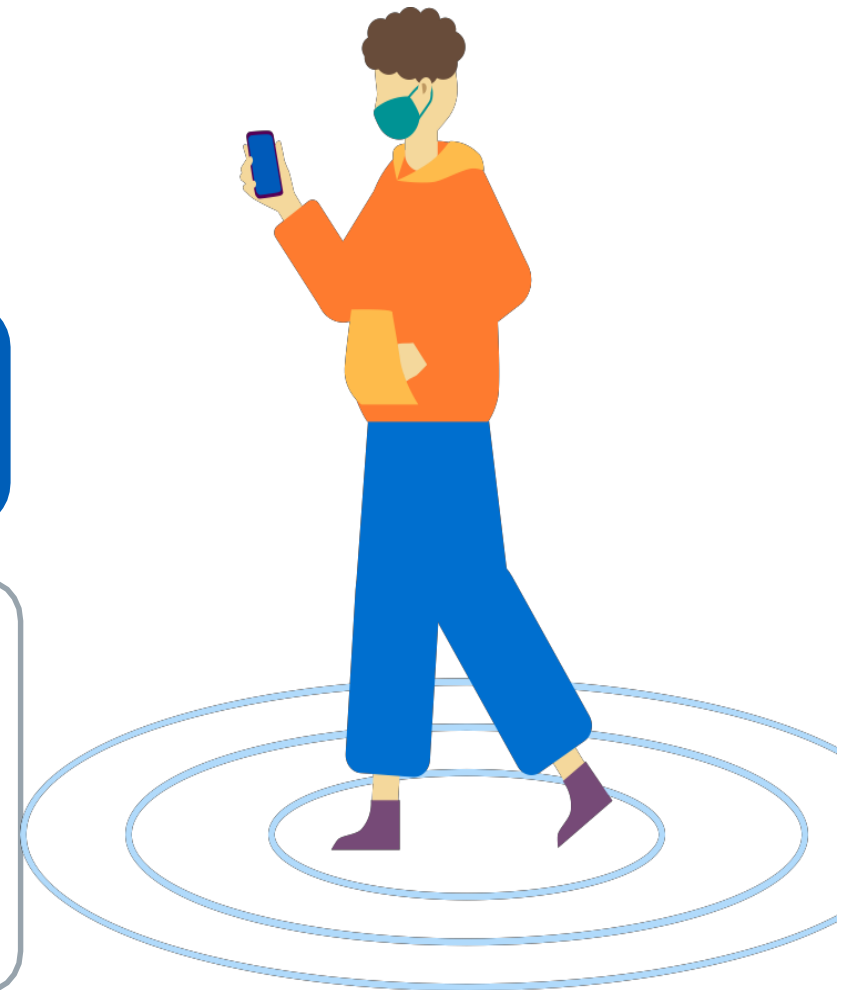
Addressing your concerns

For more information you can visit: <https://bit.ly/covidhomelearning>

If you're worried about your child medically, visit <https://www.nhs.uk/> or call 111.

To speak to your School Nurse text them on 07507333356

The Suffolk County Council Covid-19 web page with further information can be found here <https://www.suffolk.gov.uk/coronavirus-covid-19/>



If you need help to understand this information in another language please call 03456 066 067.

Se precisar de ajuda para ler estas informações em outra língua, por favor telefone para o número abaixo. 03456 066 067

Portuguese

Jeigu jums reikia šios informacijos kita kalba, paskambinkite 03456 066 067

Lithuanian

Jeżeli potrzebujesz pomocy w zrozumieniu tych informacji w swoim języku zadzwoń na podany poniżej numer. 03456 066 067

Polish

Dacă aveți nevoie de ajutor pentru a înțelege această informație într-o altă limbă, vă rugăm să telefonați la numărul 03456 066 067

Romanian

এই লেখাটি যদি অন্য ভাষাতে বুঝতে চান তাহলে নিচের নম্বরে ফোন করুন 03456 066 067

Bengali

Если для того чтобы понять эту информацию Вам нужна помощь на другом языке, позвоните, пожалуйста, по телефону 03456 066 067

Russian

If you would like this information in another format, including audio or large print, please call 03456 066 067.