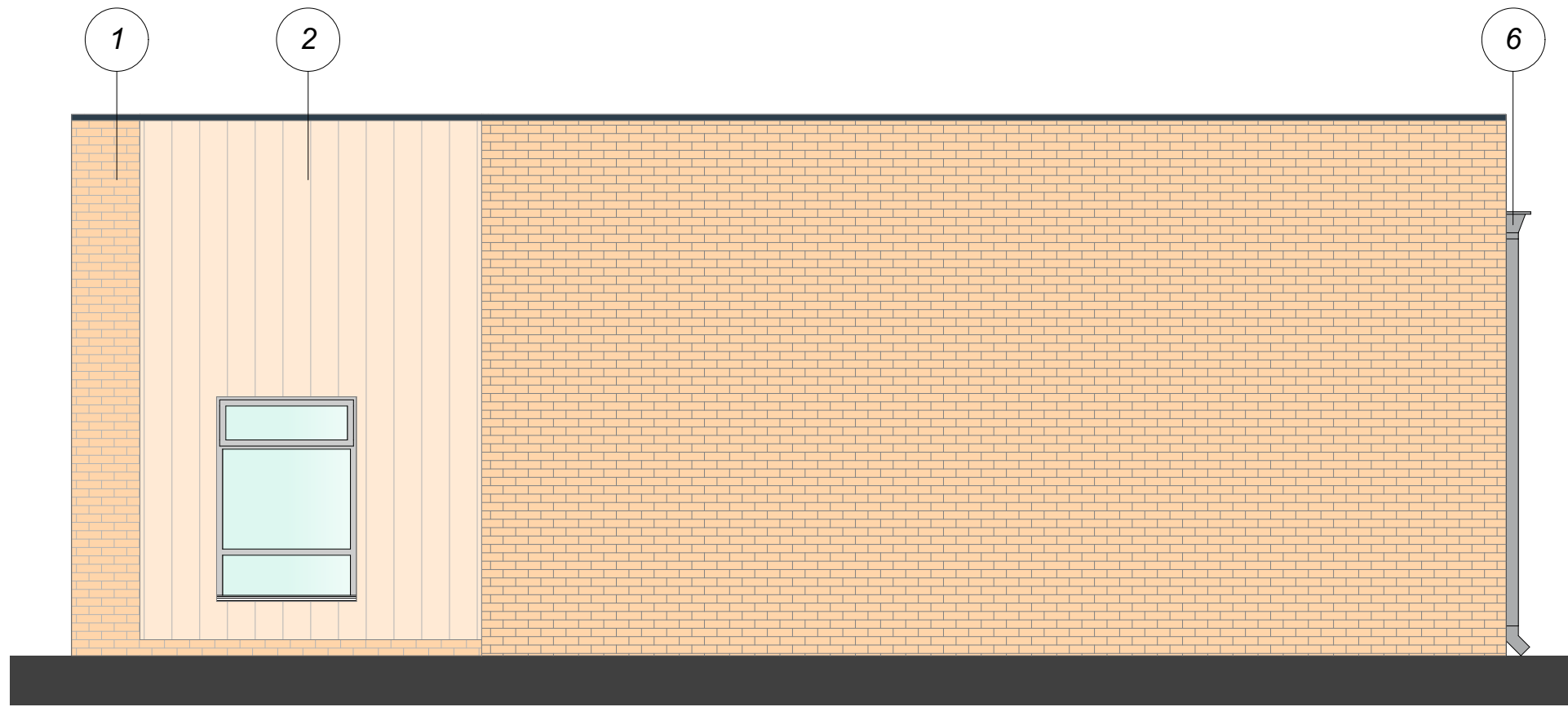


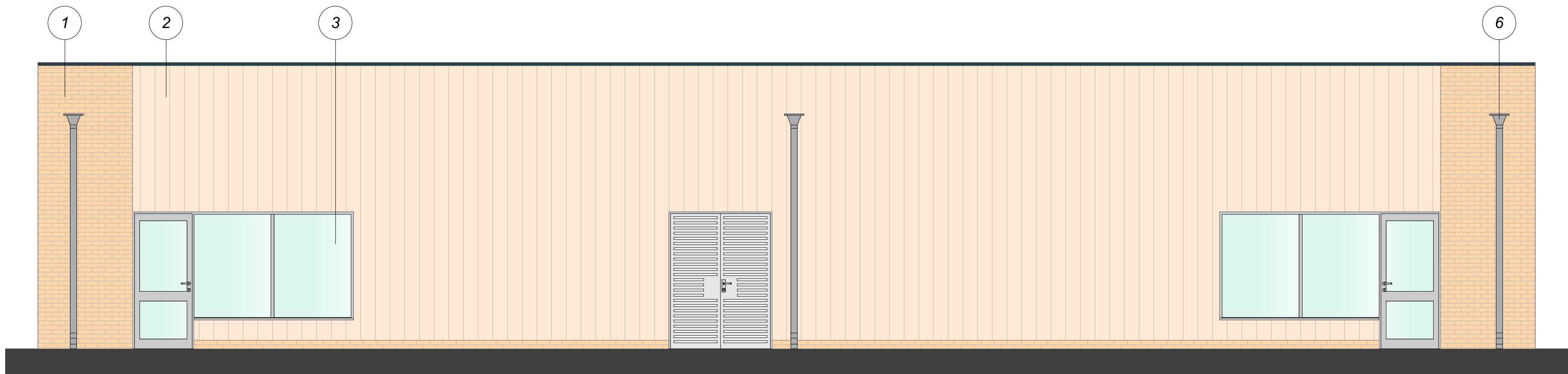
East Elevation



North Elevation

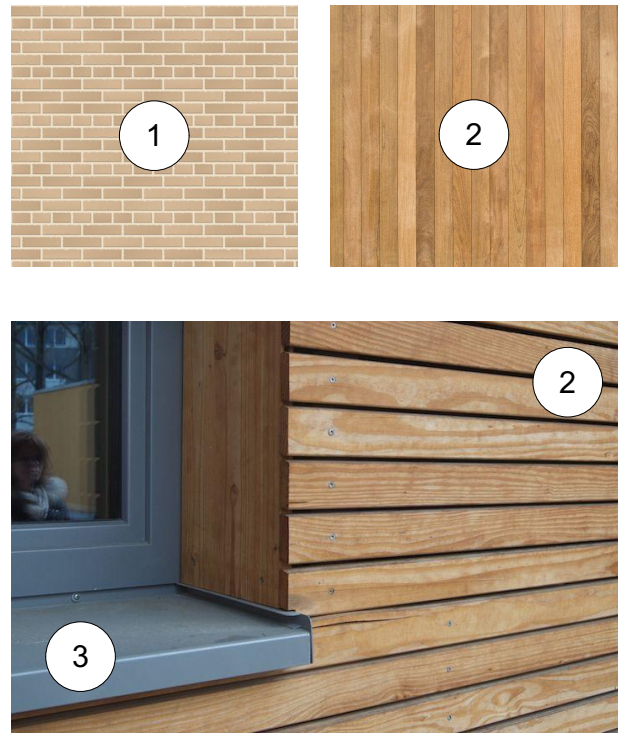


South Elevation



West Elevation

Materiality



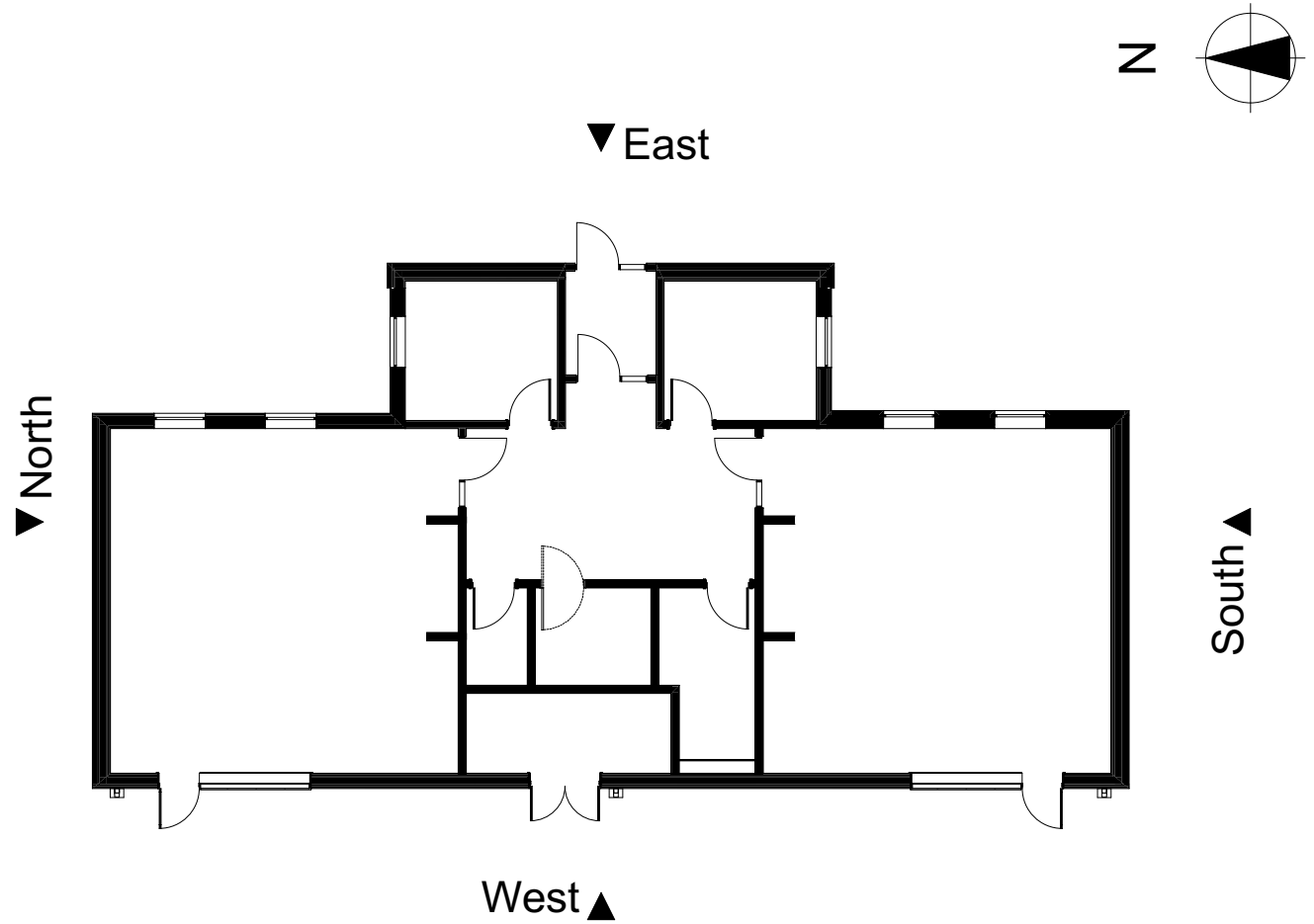
Material Key

- 1 Facing brickwork to match existing school
- 2 Timber Cladding
- 3 Aluminium powder coated window
- 4 Aluminium powder coated door
- 5 Folded aluminium powder coated capping
- 6 Aluminium powder coated hopper and downpipe

The proposed SEND standalone block considered the existing building materiality by featuring similar materials such as facing brickwork.



Existing School



Key Plan - NTS

Disclaimer.  
This drawing is to be read in conjunction with all related drawings. Do not scale from this drawing. All dimensions must be checked and verified on site before commencing any work or producing shop drawings.  
This drawing is copyright and remains the property of Concertus Design and Property Consultants. When reproducing this drawing for any purpose, please ensure that Concertus is attributed clearly by either using the company logo, or as follows 'Image produced by Concertus Design & Property Consultants Limited'.

REV	DATE	BY	DESCRIPTION	CHKD
P1	22/10/20	EB	Pre-Planning Application	TA

**Concertus**  
DESIGN & PROPERTY CONSULTANTS

2 Friars Bridge Road - Ipswich - Suffolk - IP1 1RR

Project  
Copleston HS - Creation of  
SEND Unit  
Ipswich  
Copleston Road

Project Number  
219174

Scales  
1:50  
At A1 Size

Drawing Title  
Proposed Elevations

Lead Designer  
Eumir Barreiros

email: eumir.barreiros@concertus.co.uk

Project Number  
219174

Date  
14/10/2020

Tel: 07738 756 307

219174-CDP-ZZ-XX-DR-A-2002 P1

Project Code - Originator - Volume/System - Level/Location - Type - Role - Number