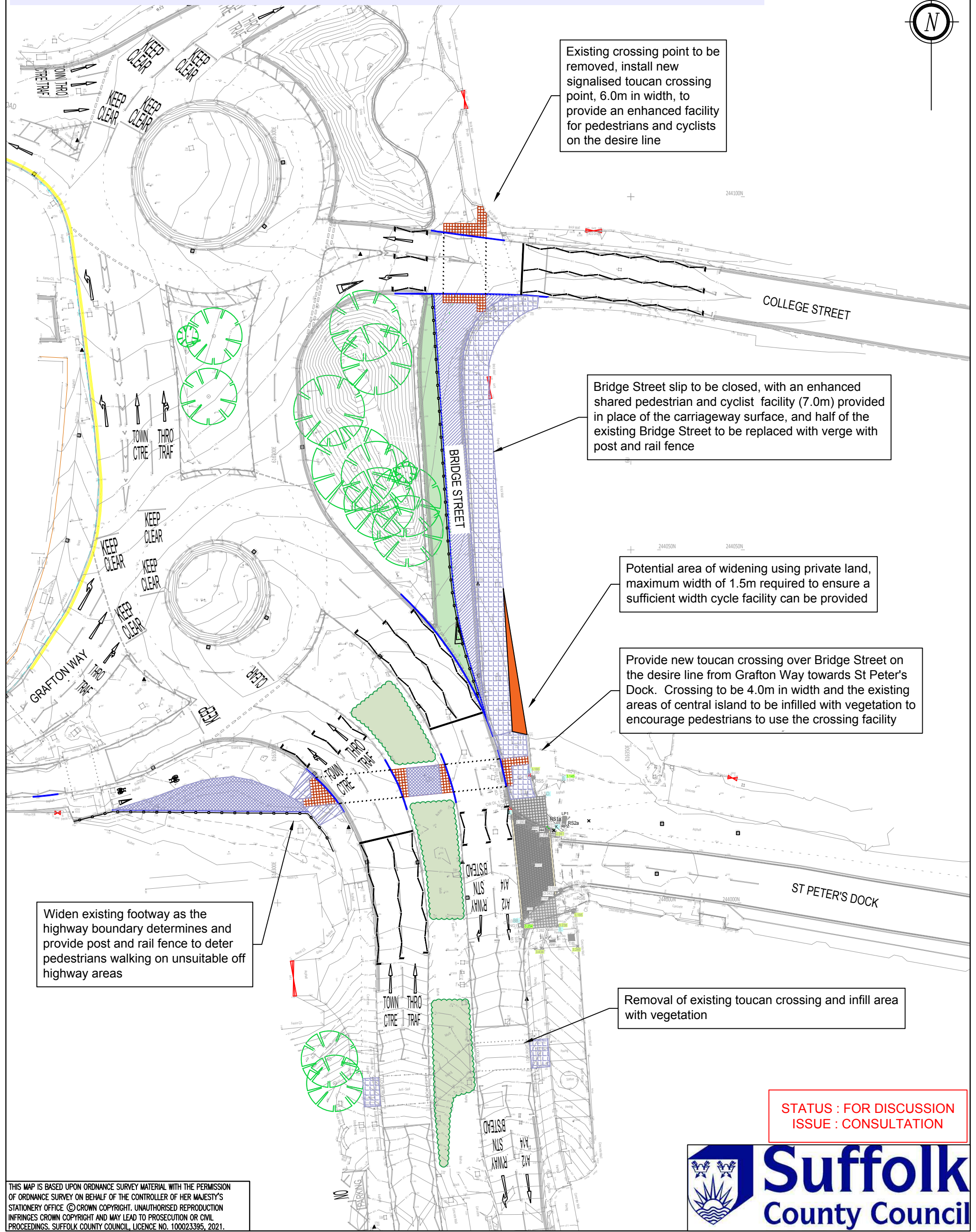
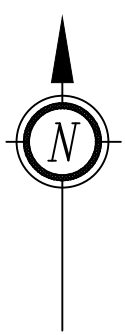


CONSULTATION PLAN - BRIDGE STREET



Existing crossing point to be removed, install new signalised toucan crossing point, 6.0m in width, to provide an enhanced facility for pedestrians and cyclists on the desire line

Bridge Street slip to be closed, with an enhanced shared pedestrian and cyclist facility (7.0m) provided in place of the carriageway surface, and half of the existing Bridge Street to be replaced with verge with post and rail fence

Potential area of widening using private land, maximum width of 1.5m required to ensure a sufficient width cycle facility can be provided

Provide new toucan crossing over Bridge Street on the desire line from Grafton Way towards St Peter's Dock. Crossing to be 4.0m in width and the existing areas of central island to be infilled with vegetation to encourage pedestrians to use the crossing facility

Widen existing footway as the highway boundary determines and provide post and rail fence to deter pedestrians walking on unsuitable off highway areas

Removal of existing toucan crossing and infill area with vegetation

STATUS : FOR DISCUSSION
ISSUE : CONSULTATION

THIS MAP IS BASED UPON ORDNANCE SURVEY MATERIAL WITH THE PERMISSION OF ORDNANCE SURVEY ON BEHALF OF THE CONTROLLER OF HER MAJESTY'S STATIONERY OFFICE © CROWN COPYRIGHT. UNAUTHORISED REPRODUCTION INFRINGES CROWN COPYRIGHT AND MAY LEAD TO PROSECUTION OR CIVIL PROCEEDINGS. SUFFOLK COUNTY COUNCIL, LICENCE NO. 100023395, 2021.



Phoenix House, 3 Goddard Road, Ipswich, Suffolk IP1 5NP.
Highways enquiries: 0345 606 6171 www.suffolk.gov.uk/highways

REVISION(S)				PROJECT TITLE	ORIGINATOR	CHECKER	DESIGNER	REVIEWER
				ACTIVE TRAVEL FUND	JWW		JWW	
				TRANCHE 2	SCALE(S) ORIGINAL SIZE A3		DATE	
				BRIDGE STREET, IPSWICH	1:500		JANUARY 2021	
				DRAWING TITLE	DRAWING NUMBER			REVISION
DESCRIPTION	REV.	DATE	INTL.	CONSULTATION PLAN	218385-IPS-BRI-0100-001			-