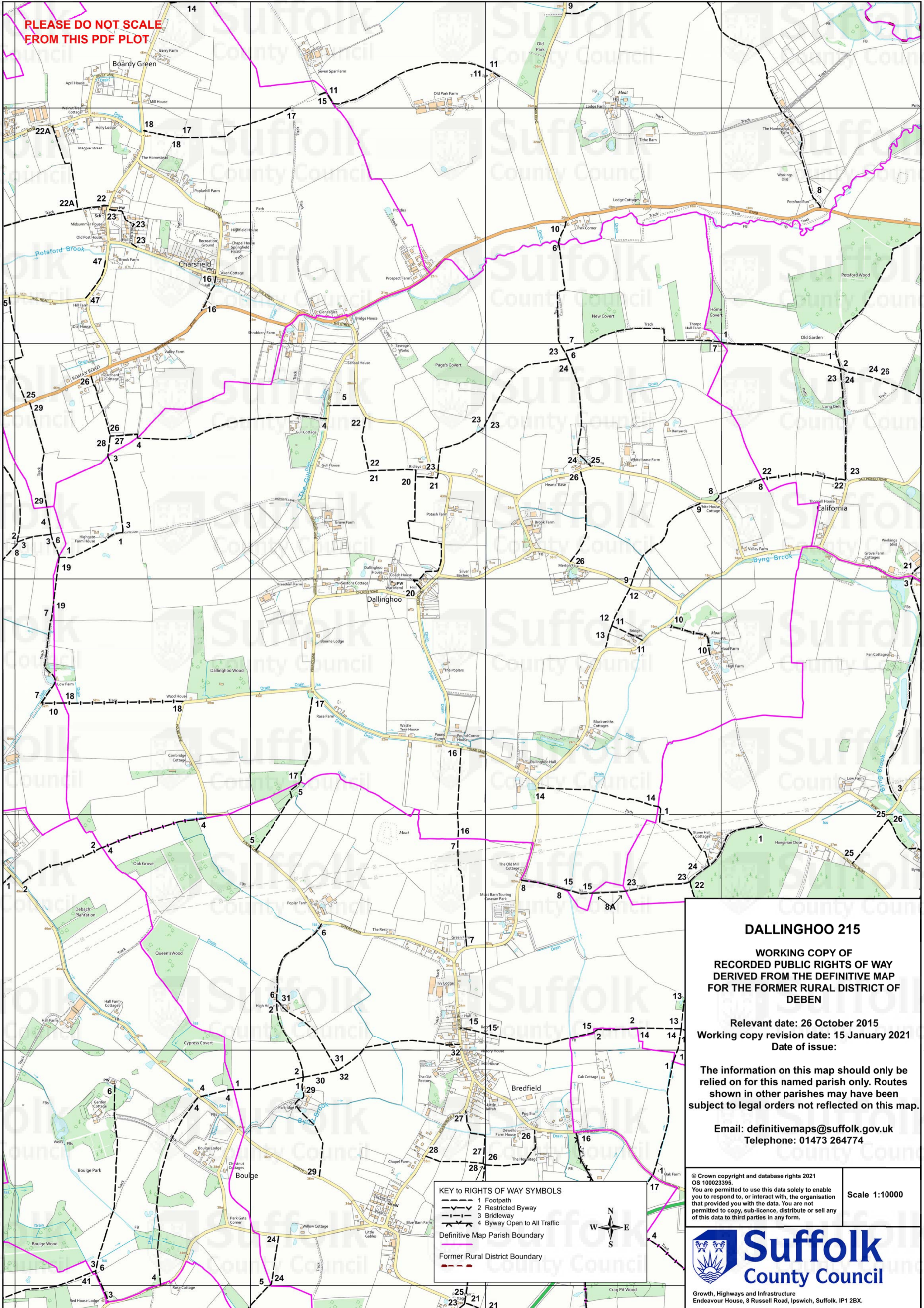


PLEASE DO NOT SCALE FROM THIS PDF PLOT



DALLINGHOO 215

**WORKING COPY OF
RECORDED PUBLIC RIGHTS OF WAY
DERIVED FROM THE DEFINITIVE MAP
FOR THE FORMER RURAL DISTRICT OF
DEBEN**

Relevant date: 26 October 2015
Working copy revision date: 15 January 2021
Date of issue:

The information on this map should only be relied on for this named parish only. Routes shown in other parishes may have been subject to legal orders not reflected on this map.

Email: definitivemaps@suffolk.gov.uk
Telephone: 01473 264774

© Crown copyright and database rights 2021
OS 100023395.
You are permitted to use this data solely to enable you to respond to, or interact with, the organisation that provided you with the data. You are not permitted to copy, sub-licence, distribute or sell any of this data to third parties in any form.

Scale 1:10000

KEY TO RIGHTS OF WAY SYMBOLS

- 1 Footpath
- 2 Restricted Byway
- 3 Bridledway
- 4 Byway Open to All Traffic
- Definitive Map Parish Boundary
- Former Rural District Boundary



Growth, Highways and Infrastructure
Endeavour House, 8 Russell Road, Ipswich, Suffolk. IP1 2BX.