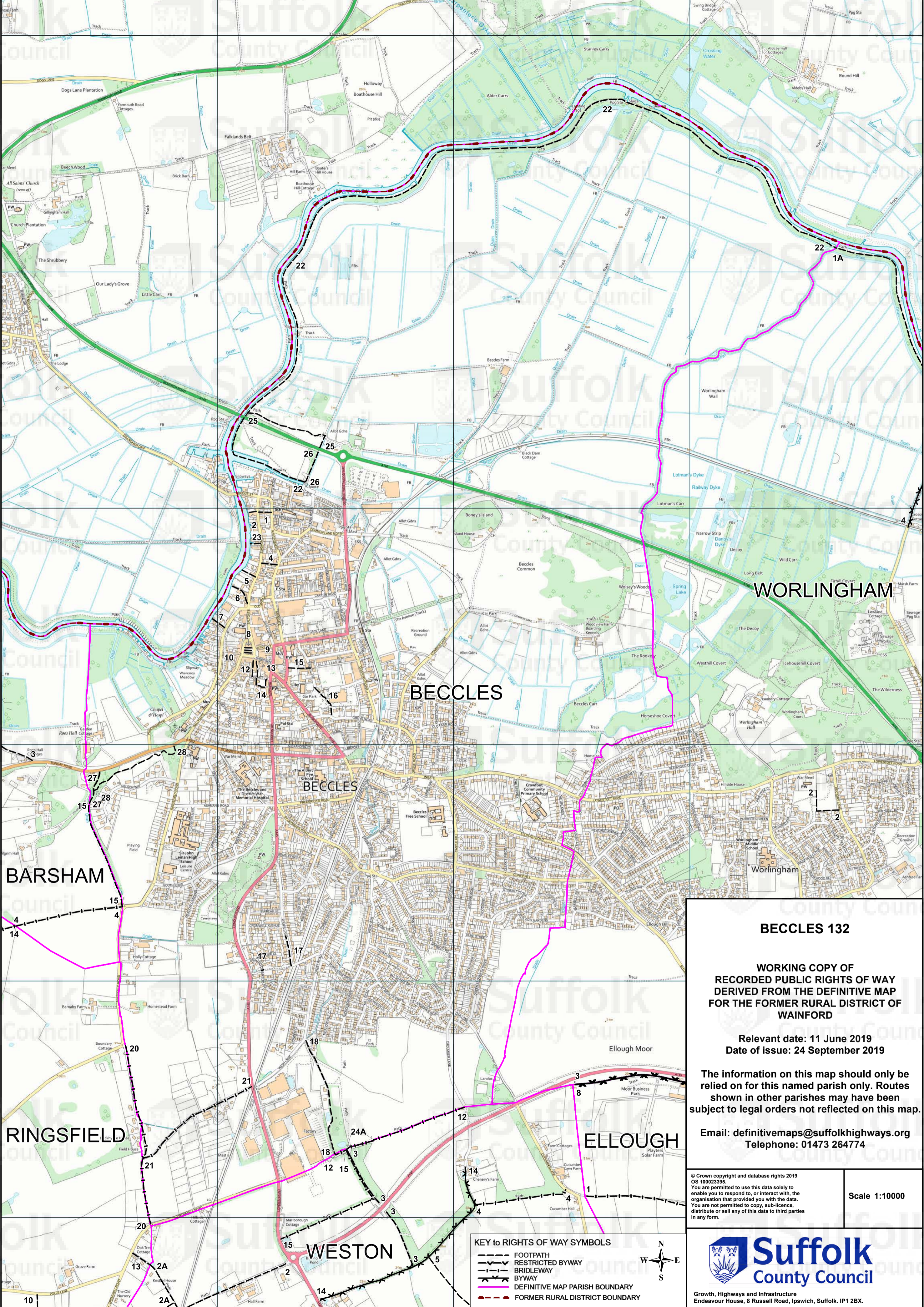


293000
292000
291000
290000
289000
288000



BECCLES 132

**WORKING COPY OF
RECORDED PUBLIC RIGHTS OF WAY
DERIVED FROM THE DEFINITIVE MAP
FOR THE FORMER RURAL DISTRICT OF
WAINFORD**

Relevant date: 11 June 2019
Date of issue: 24 September 2019

The information on this map should only be
relied on for this named parish only. Routes
shown in other parishes may have been
subject to legal orders not reflected on this map.

Email: definitivemaps@suffolkhighways.org
Telephone: 01473 264774

© Crown copyright and database rights 2019
OS 100023395
You are permitted to use this data solely to
enable you to respond to, or interact with,
the organisation that provided you with the data.
You are not permitted to copy, sub-licence,
distribute or sell any of this data to third parties
in any form.

Scale 1:10000

KEY to RIGHTS OF WAY SYMBOLS

- FOOTPATH
- RESTRICTED BYWAY
- BRIDLEWAY
- BYWAY
- DEFINITIVE MAP PARISH BOUNDARY
- FORMER RURAL DISTRICT BOUNDARY



Growth, Highways and Infrastructure
Endeavour House, 8 Russell Road, Ipswich, Suffolk. IP1 2BX.