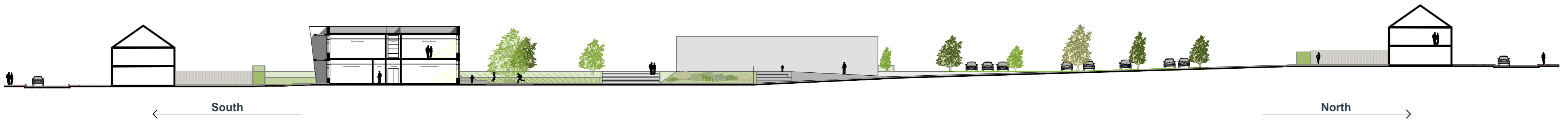


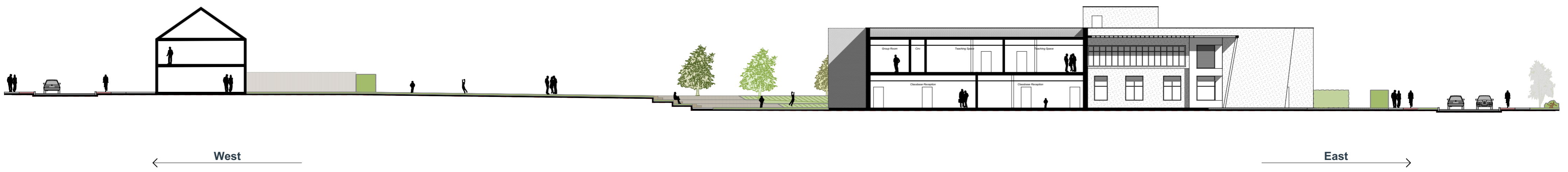
1) Phase 1 Site Section A-A | NTS



2) Phase 1 Site Section B-B | NTS



3) Phase 2 Site Section A-A | NTS



4) Phase 2 Site Section B-B | NTS



5) Street Elevation E-W | NTS



6) Street Elevation N-S | NTS

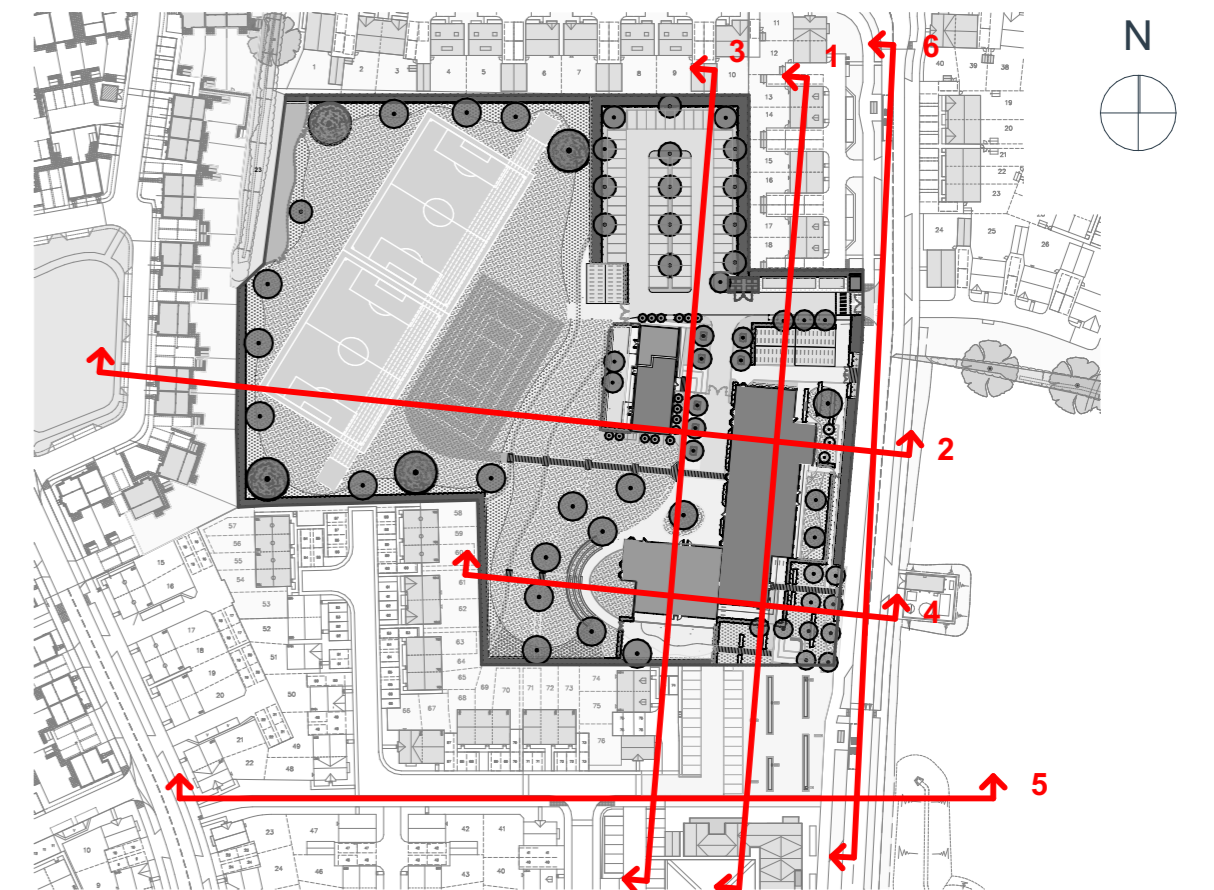
Level Changes

From northeast to southwest the site drops approximately 6.5m, as a result of this level change the landscape has been designed to follow the existing contours of the site using terracing to create levels of usable space.

The sports pitches and running track occupy the top terrace close to the western border of the site.

Proximity

The red line seen on the elevation above is placed on the school site boundary and highlights the proximity of the adjacent residential dwellings to the school.



Site Sections & Street Elevations Key Plan | NTS