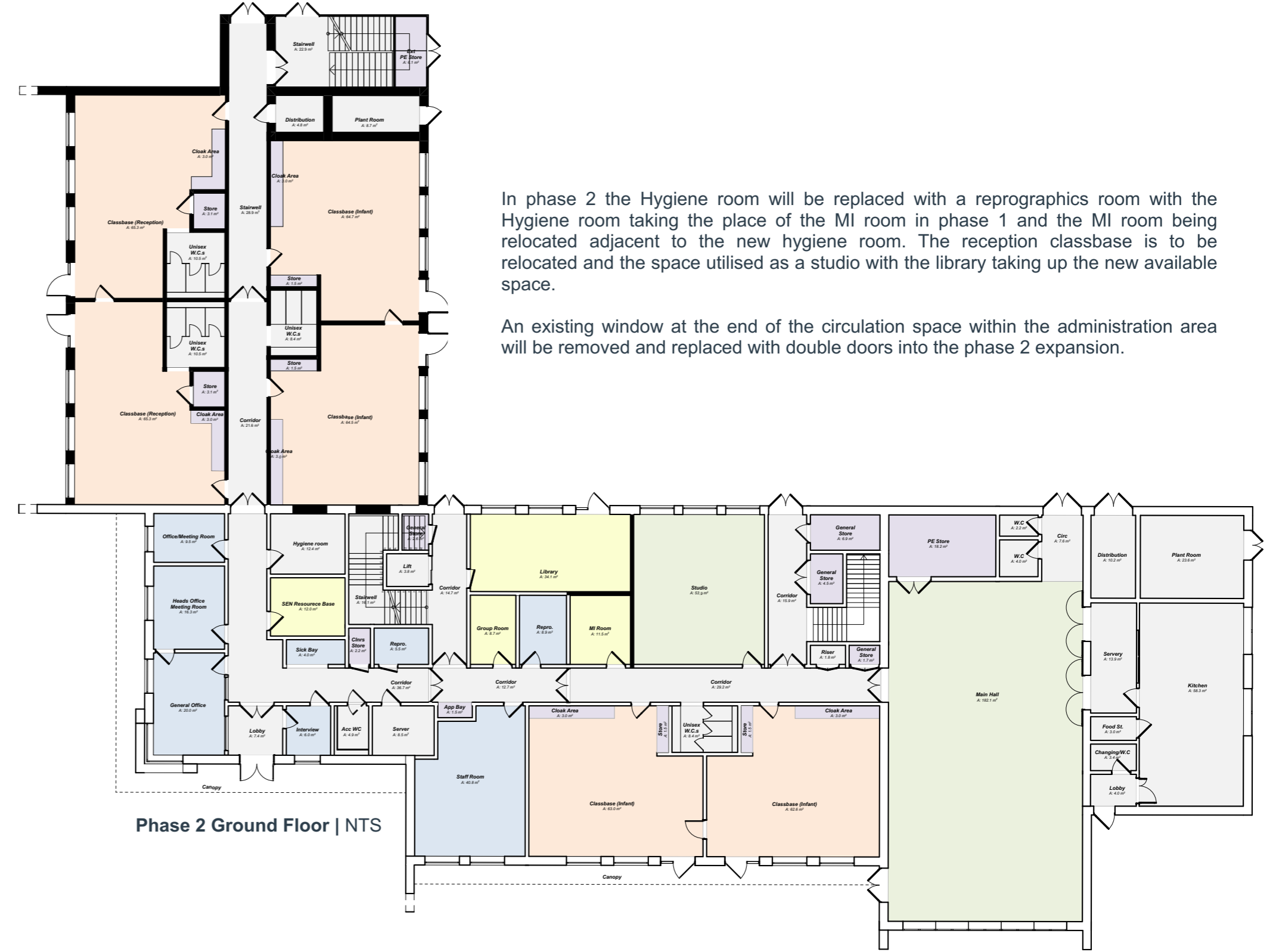


The layout of the ground floor plan for phase 1 has been designed to minimise the changes required during the phase 2 expansion. The main changes will be to the following spaces.

- Library
- Group
- Hygiene Room
- Classbase (Reception)

The administration area has been designed to enable the phase 2 expansion to be constructed with no effect on the existing circulation space within this area.



In phase 2 the Hygiene room will be replaced with a reprographics room with the Hygiene room taking the place of the MI room in phase 1 and the MI room being relocated adjacent to the new hygiene room. The reception classbase is to be relocated and the space utilised as a studio with the library taking up the new available space.

An existing window at the end of the circulation space within the administration area will be removed and replaced with double doors into the phase 2 expansion.

On the First Floor plan of phase 1 layout, a storage room has been located next to the Pupil WC and will be removed as part of the phase 2 expansion to allow access through into the First Floor of the new block.

The remainder of the first floor layout will be unchanged.

