

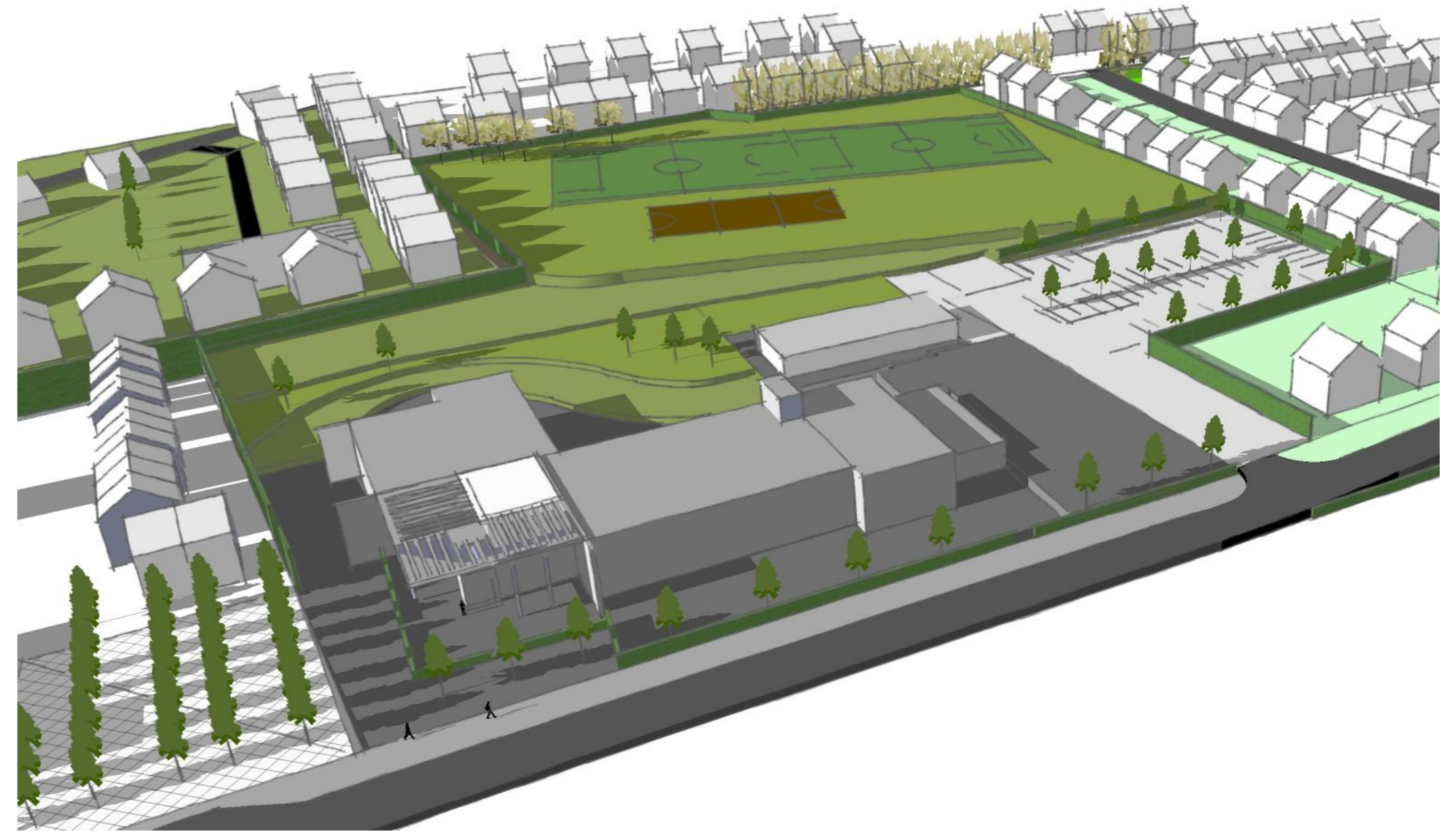
New Henley Gate Primary & Pre-School - Public Consultation

Suffolk County Council (SCC) is consulting on a proposal to provide a new primary and pre-school in the Henley Gate Neighbourhood. The proposal includes a 210 place Primary School and 30 place Pre-school in Phase One and potential future expansion to 420 Primary School places and 60 Pre-school places. The initial Phase One provision is programmed to be operational in September 2025. The timing of subsequent expansion will be determined by housing development and projected demand for pupil places.

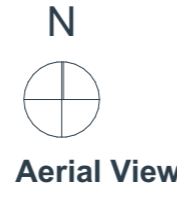
You are able to view draft plans of the proposed developments, complete an online comment form or download a comment form at www.suffolk.gov.uk/consultations from Tuesday 29 August 2023.

This non-statutory pre-application planning consultation will enable us to gather the views of local residents and other stakeholders prior to the submission of the planning application. It does not affect the right to comment on the proposals during the statutory planning consultation process.

If possible please comment online at www.suffolk.gov.uk/consultations or via email to schools@suffolk.gov.uk by Friday 15 September 2023. Paper comment forms must be returned to the Schools Infrastructure Team, Suffolk County Council, Endeavour House, 8 Russell Road, Ipswich IP1 2BX by the same date.



Site Massing



Site Key Plan | 1:500 @ A1