

April 2025



West Felixstowe Walking, Wheeling and Cycling Route

Consultation Summary Autumn 2024



Consultation Summary



Figure 1: example leaflet used to advertise the consultation

In Autumn 2024, Suffolk County Council consulted with the public and key stakeholders on a walking and cycling scheme in West Felixstowe. The consultation was open for eight weeks from 28th October and 20th December 2024.

The route being consulted on was a result of successfully securing funding from Active Travel England to enhance walking, wheeling and cycling across the county. The route upgrades will include measures to help more people to walk, wheel and cycle.

The consultation was the second phase of engagement, following on from an earlier phase in 2023 where we asked for ideas on the route proposed to inform more detailed design. In this second phase of engagement, we shared some design proposals for each of the schemes and asked for feedback on these from the general public and stakeholders.

We received 139 responses to the surveys. 38% of survey respondents thought that the proposals would encourage them to walk, wheel and cycle more and 18% were not sure.

Next steps are now to finalise the designs, taking into account the feedback received, before beginning the delivery and construction of the scheme in 2025.

Project Summary

Suffolk County Council is making changes to make it safer, easier and more enjoyable for everyone to walk, wheel and cycle in their everyday lives. The scheme that formed a part of this consultation is located in the West of Felixstowe.

This area is a busy one at school drop-off and pick-up times as a number of schools are located here - SET Felix primary school, Grange Community primary school and The Bridge school. You told us in earlier feedback (in 2023) that you would like to see improvements to make the area safer for all those families and children walking and cycling to school.

In addition, the population of Felixstowe is expected to grow over the next few years with a new neighbourhood planned to the north of the town which will result in more people travelling in the area.

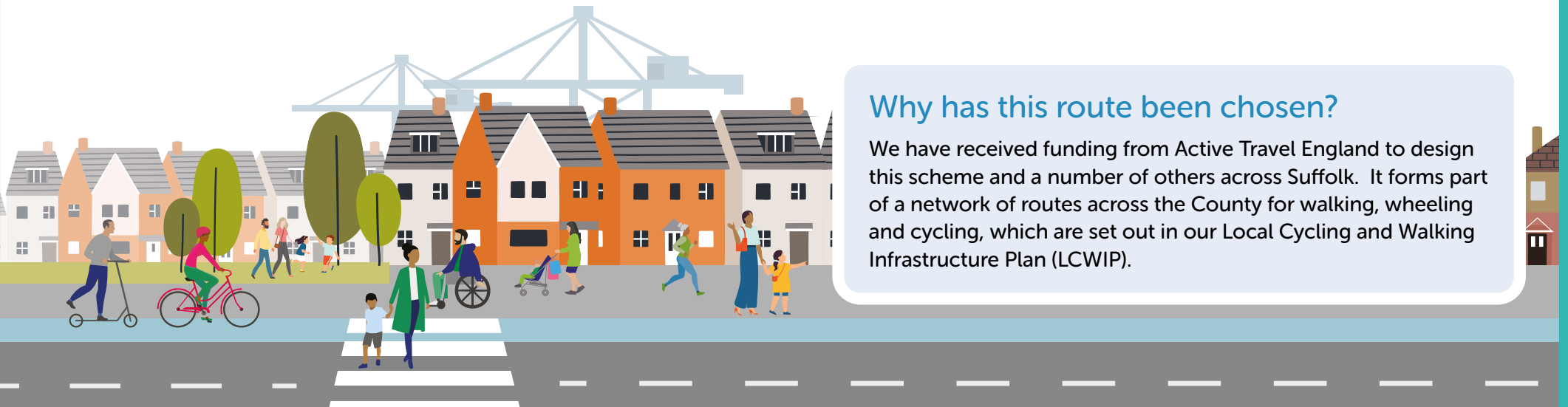
[For more detailed information and visuals for each of the schemes, the information is available to view online.](#)

The improvements we're proposing aim to:

- Give you more options to walk, cycle or wheel for local journeys
- Make it easier and safer for you to walk and cycle by providing more space, upgrading crossings and creating safer junctions
- Improve air quality and reduce noise pollution for local residents
- Make the roads less busy for those who have to use them

Why has this route been chosen?

We have received funding from Active Travel England to design this scheme and a number of others across Suffolk. It forms part of a network of routes across the County for walking, wheeling and cycling, which are set out in our Local Cycling and Walking Infrastructure Plan (LCWIP).



We asked people about proposals focussed on the following locations

Maidstone Road/High Street junction

- Upgrade the existing zebra crossing to a parallel crossing, which means that cyclists are allowed to cross here too.
- Make the width of the entrance onto Maidstone Road narrower and give more priority for those walking and cycling.

Maidstone Road shared use

- Widen the pavement on the west side so that it becomes a shared walking and cycling path. Access to private driveways will not be affected.
- Introduce traffic calming measures to slow cars down as they turn in from the southern end

SET Felix primary school

- Slow down traffic by increasing the size of the existing raised table and widening the pavement.
- Restrictions on parking outside the school.

Maidstone/Seaton Road junction

- Introduce traffic calming measures to slow cars down as they turn into this section of Maidstone Road.

Maidstone Road shared use

- Widen the pavement so that it becomes a shared path for use by pedestrians and cyclists.
- Remove the existing metal railings to make a clear, continuous walking and cycling path.

Grange Road shared use

- Widen the pavement so that it becomes a shared path for use by both pedestrians and cyclists.

Grange Farm Avenue roundabout

- Make the width of the junction narrower to reduce the distance needed to cross. Buses will still be able to turn in both directions as they do currently.
- Either build a wider traffic island or install a zebra crossing to make it easier and safer for pedestrians and cyclists to cross the road.



Grange Road, Felixstowe

Figure 2: Copdock to Capel St Mary overview map

Wadgate Road junction

- Convert the mini roundabout to a t-junction which will make it easier and safer for pedestrians and cyclists to cross the road.

Grange Community school

- Install a larger raised table and widen the pavement to slow vehicles down as they approach the school.
- No parking will be allowed outside the school.

Mill Lane junction

- Convert the roundabout to a t-junction which will make it easier and safer for pedestrians and cyclists to cross the road.

Ferry Lane/Chelsworth Avenue

- Widen the pavement at the junction of Ferry Lane and Chelsworth Road as well as introduce new signage at the existing crossing

Wesel Avenue crossing

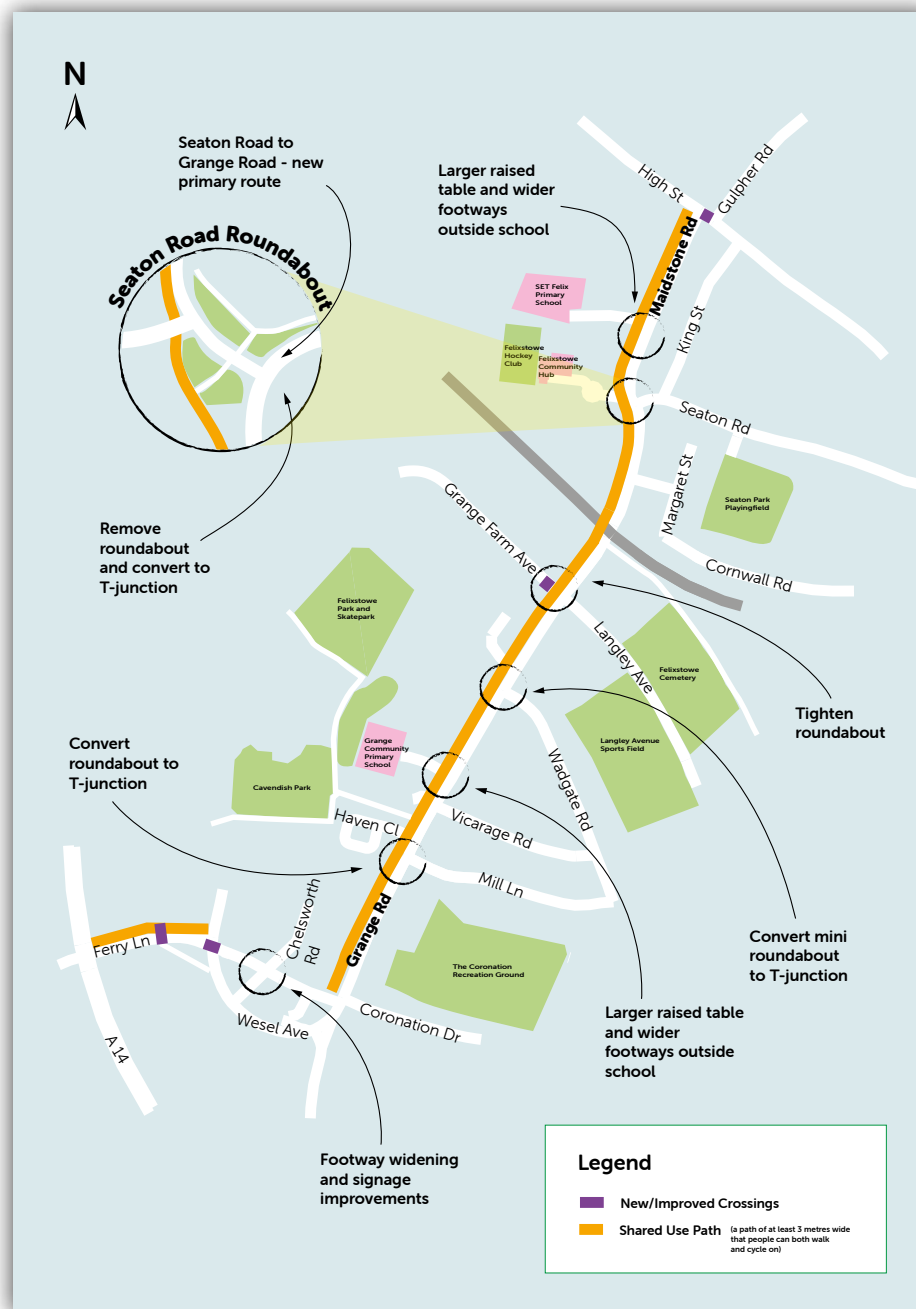
- New parallel crossing where Ferry Lane crosses over Wesel Avenue, which will allow both pedestrians and cyclists to cross

Ferry Lane crossing

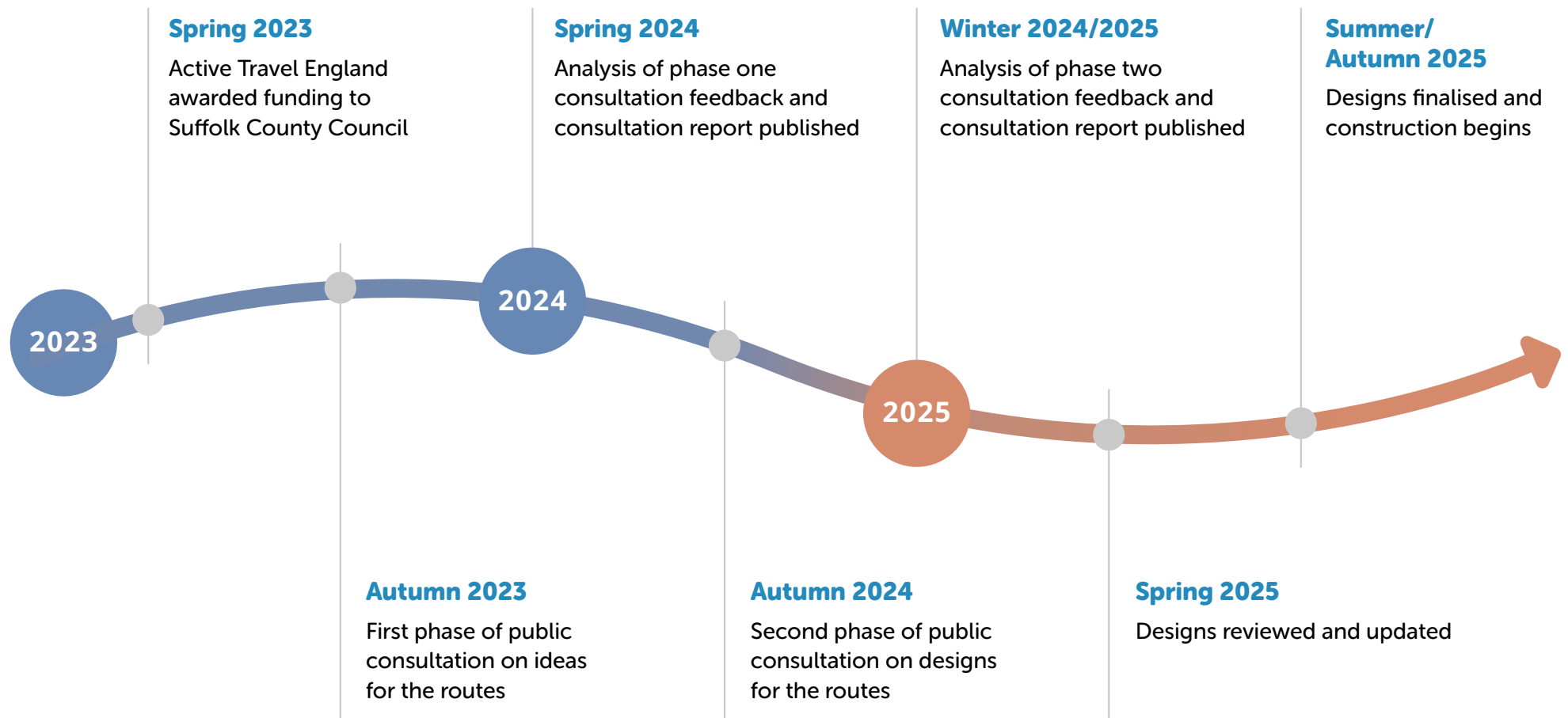
- New parallel crossing on Ferry Lane, which will allow both pedestrians and cyclists to cross.

Ferry Lane shared use

- Wider pavements on Ferry Lane to give enough space for both pedestrians and cyclists to share the space.



Project timeline



The consultation

The formal public consultation took place over the autumn and winter of 2024 between 28th October and 20th December 2024. It included engagement with local residents and community groups. We also spoke to students from Felixstowe high school in early 2025 after the formal public consultation had closed.

The objectives of the consultation were to:

- **Share information** on the project with the public to make them aware of potential future changes in their area
- **Get feedback** from local residents and businesses who are familiar with the routes and use them on a regular basis, to help us to understand if any changes to the designs are needed
- **Continue stakeholder engagement** following on from the phase one consultation and understand if any changes to the designs are needed

The consultation followed the guidance in [Suffolk County Council's consultation and engagement charter](#).

Wesel Avenue junction with Ferry Lane, Felixstowe



Consultation Methods

Publicity

Details of each of the schemes was made available on a dedicated [webpage](#). This was intended to be easy to use for the general public and stakeholders. It included both interactive and static maps of each of the scheme, as well as visualisations of some sections of the routes to show how it might look.

Posters were put up in the local area to advertise the consultation and leaflets were distributed to local centres and facilities. A press release was shared and picked up by the local press and via social media channels.

Survey

Surveys were available to complete via the website. It was also possible to request a paper copy of the survey. The survey asked questions to gauge support for the various interventions proposed. There was also space for open comments.

Drop-in sessions

One drop-in session was held at Felixstowe Methodist Church on Seaton Road to give the public the chance to come and speak to a member of the team and ask any questions. The Betastreet 360 software was available to use at this session to help residents to visualise some of the changes and propose their own ideas.

Stakeholder Engagement

Stakeholders were emailed about the consultation and offered an opportunity to feed back or chat to a member of the team about the proposals. The proposals were also presented to Felixstowe town council in January 2025.

Local stakeholders were mapped out from existing contacts and using local knowledge of the area.

School Engagement

Two workshops were held with some of the Active Travel Ambassadors from Felixstowe High School in January and February 2025. The first of these was a walkaround of the neighbourhood with eight students, to gather feedback on their thoughts and any potential changes.

In the second session, we met with ten of the students in school and facilitated a workshop and discussions. Students were given paper maps to mark up and annotate where they would like to see improvements in the Maidstone Road area.

Students also had the opportunity to use the Betastreet 360 software, to give them a chance to start to draw their ideas on screen and see them start to come to life.

Multiple attempts were made to contact SET Felix Primary School and Grange Community schools via email and phone, offering to discuss the proposals and share with teachers and pupils. Unfortunately no feedback from either school was received.

Consultation findings

Summary



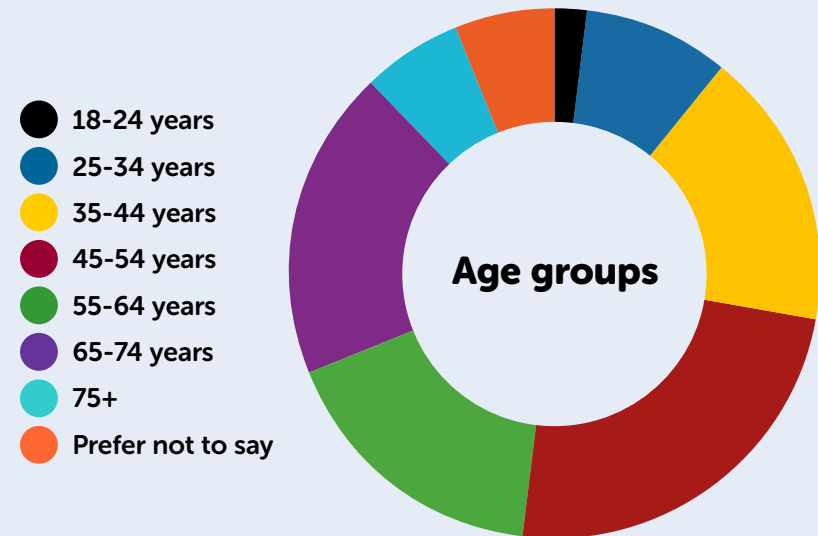
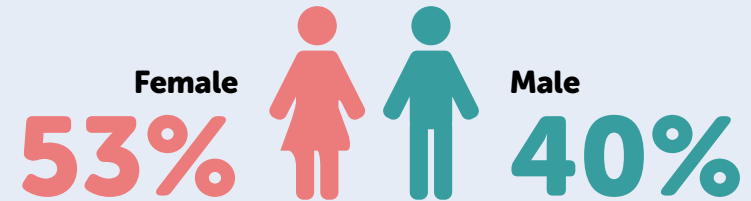
people accessed the website and viewed the details of the schemes



responses to the survey

Figure 2: age of survey respondents

Demographics of respondents



12% of respondents to the survey stated that they had a disability
100% were White British

Responses where demographic information was not disclosed have been removed from the results.

For those that completed the survey, they were asked:

How do you currently travel along the route?

The majority of survey respondents (78%) stated that they drive, although a high proportion also walked and cycled on the route some of the time.

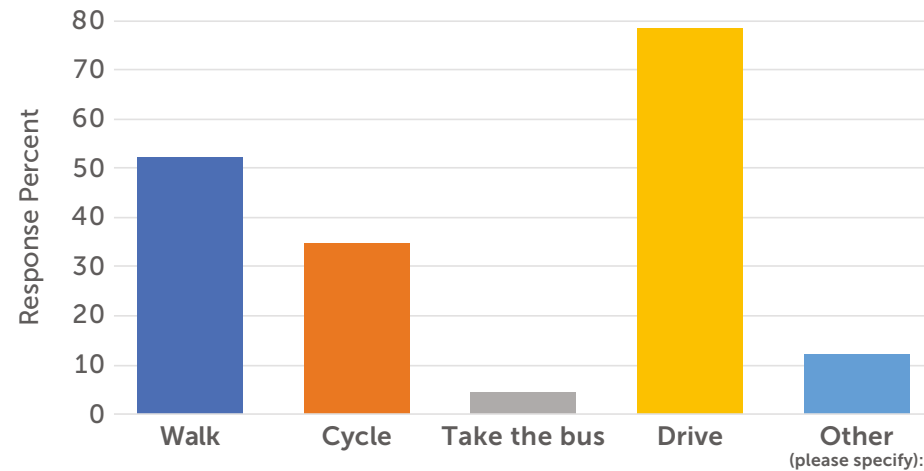


Figure 3: How do you currently travel along this route.

In addition to the survey responses, we also spoke to school children from Felixstowe High School. We worked in depth with ten students and also received feedback from a whole school survey.

517 school students responded to whole school survey.

The majority of students stated that they walk to school (49%).

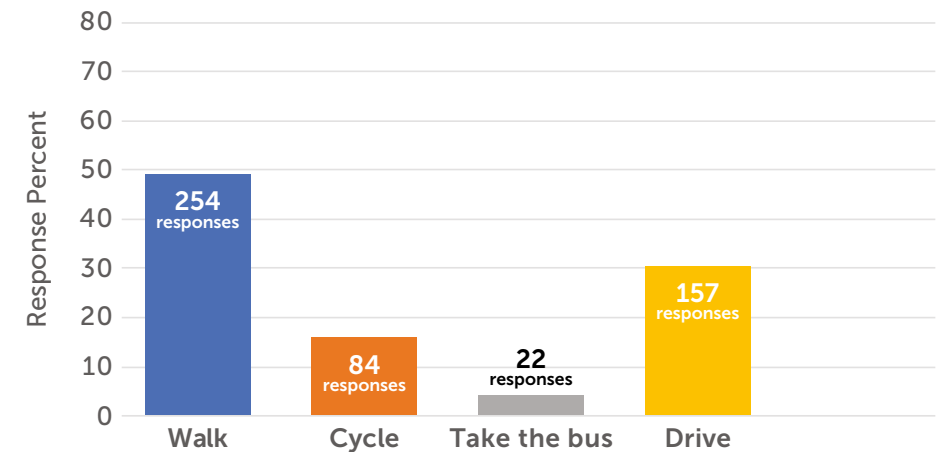


Figure 4: How do you currently travel to school.

Findings

You told us...

- **38% of survey respondents** said that the proposals would make it easier and safer for cyclists and pedestrians, and 18% weren't sure..
- **Survey respondents** were asked which parts of the route needed the most improvements to make it easier and safer to walk, wheel or cycle along the route, as shown in the graphic.

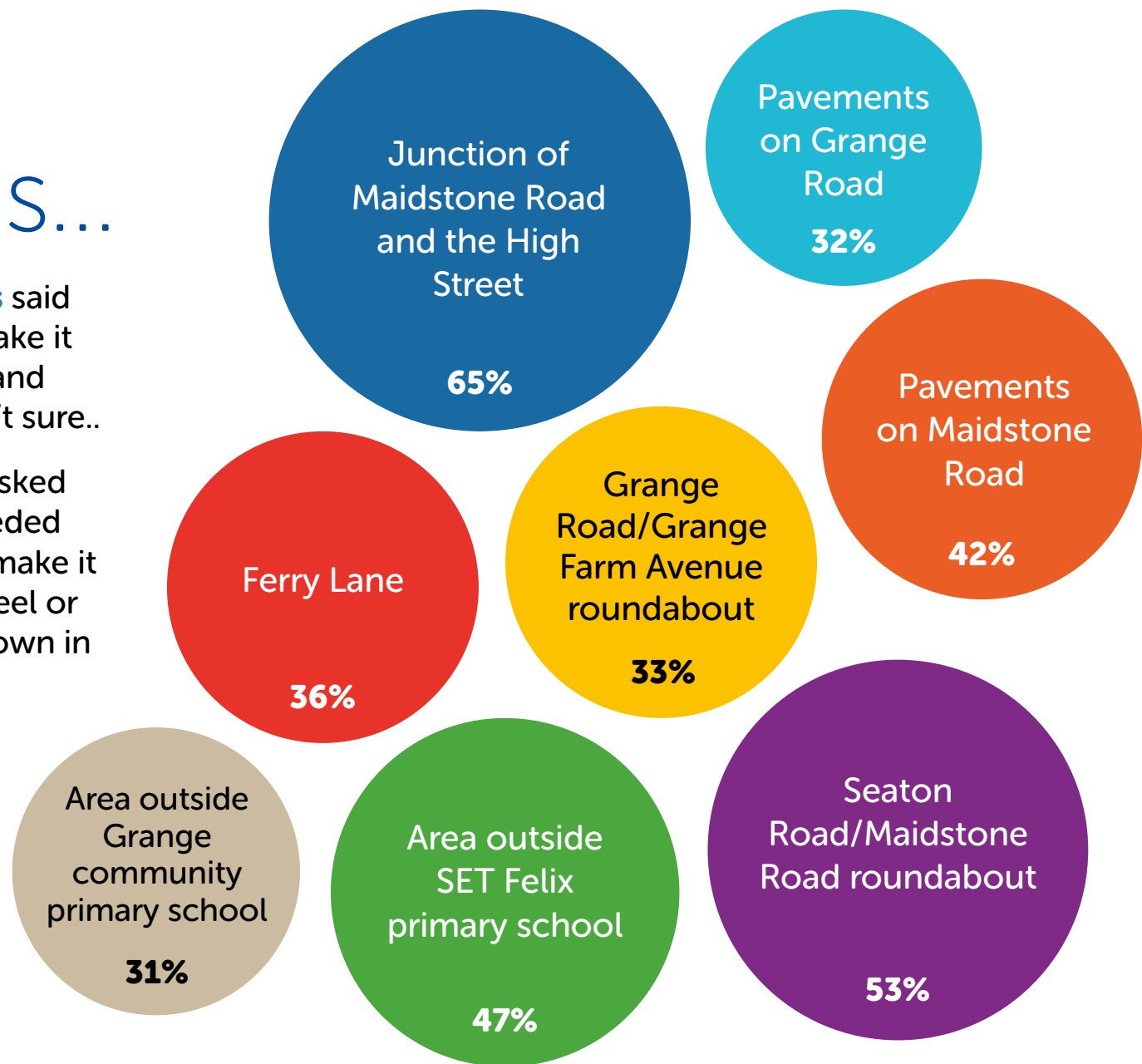


Figure 5: Q7: Which parts of the route currently need improvements to make it safe and easy to walk and cycle?

Of the changes proposed, there was most support for **changes to the Maidstone Road/Seaton Road junction** (59%), followed by **new crossings and increased priority for cyclists on Ferry Lane** (47%)

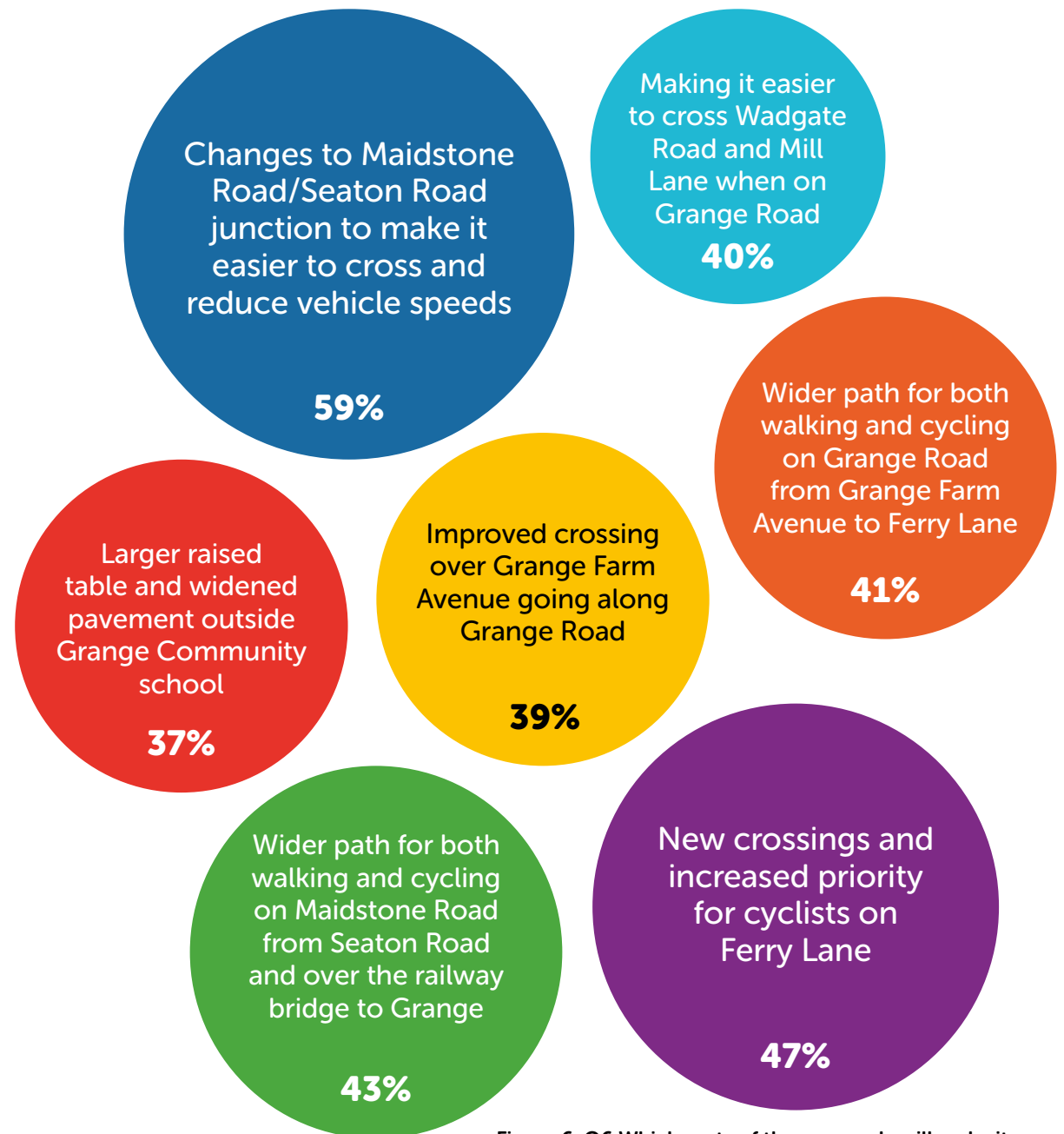


Figure 6: Q6 Which parts of the proposals will make it easier and safer to walk/wheel/cycle along the route?

Residents who completed the survey and talked to us at the event told us:

Widening the pavement at north end of Maidstone Road could mean that on-street parking spaces would need to be lost

The proposed shared use path on Maidstone Road might create conflict, particularly with High School students cycling on it

Maidstone Road is already tight for parking as it is and any reduction in space for on-street parking might lead to entrances and driveways being blocked

Vehicle speeds around the bend where Wesel Avenue meets Grange Road are too high. This makes it unsafe for pedestrians to cross here

The northern part of Maidstone Road could be made one-way to allow the road to be narrowed without causing conflict between motorists. In this scenario, King Street could be made one-way in the opposite direction. This idea was proposed by 20 residents in their survey responses and fed back at the event as well

Maidstone Road junction with Seaton Road, Felixstowe



Students from Felixstowe High School

517

students from Felixstowe High School
completed the whole school survey.

They were asked which parts of the route needed improvements and highlighted the areas at the northern end of the route as needing the most improvements.

Location	Needs a lot of improvement	Needs a little improvement	Needs no improvement
Maidstone Road/ High Road junction	44%	50%	6%
Outside Felix primary school	50%	42%	8%
Seaton Road/ Maidstone Road junction	44%	44%	11%
Grange Farm Avenue/Grange Road junction	17%	64%	19%
Outside Grange primary school	39%	39%	22%
Across Wesel Avenue and along Ferry Lane	33%	44%	22%

Students were asked what changes would encourage them to walk along the route more, and stated wider pavements, less parking on the pavement and more crossing points as being the most important factors.

To encourage students to cycle more, they identified either wider pavements that you can cycle on or safe space on the road to cycle on as being most important, as well as less parking on the pavement

Students in the workshop walked part of the route to help them to identify what the main challenges were. From this and the feedback from the whole school survey, they identified the northern section of Maidstone Road from the High Road to the rail bridge as needing the most improvements.



Students from Felixstowe high school taking part in a workshop

Students then shared ideas about possible changes and interventions at four locations:

Maidstone Road/High Road junction

They supported the idea of reducing the width of the junction and adding in some form of crossing over Maidstone Road near the High Road. Their preference was for a zebra crossing to give them the most priority. They also suggested maxing this northern part of Maidstone Road one way.

Outside SET Felix primary school

They recommended improving the space outside the school where the pavement is already wide, adding planting, benches and a shelter. They also discussed the importance of being able to cross safely here and some students suggested having a zebra crossing.

Maidstone Road/Seaton Road junction

Students told us how it is quite difficult to cross the road in this area at the moment because of the wide roundabout. They suggested a zebra crossing just south of the roundabout location and supported a change in layout here. They also discussed making the space nicer around the junction, using planting and benches.

Maidstone Road by the rail bridge

Students noted that in this section of Maidstone Road the pavement is often poor quality and there are lots of accesses for schools and driveways. There is also a gap in the pavement edge coming off the rail bridge on the east side of the road, which makes it feel dangerous when walking over the bridge on this side.

Students from Felixstowe high school taking part in a workshop



What we plan to do

We are now reviewing the plans based on the feedback received.
Key points that we are focussing on within the review include:

Retaining existing levels of on-street parking within the neighbourhood

Reviewing if shared use paths for both people walking and cycling are appropriate in this location or if there is an alternative solution to provide safe space for cycling

Reviewing how to improve traffic flows along the northern section of Maidstone Road to make it easier for all users

Ensuring that the design of the junction of Maidstone Road and the High Road allows people to cross safely

Ensuring that the spaces outside SET Felix and Grange primary schools create a safe environment for families accessing them and are also a pleasant space to be

Reviewing if there are sufficient safe crossing points for pedestrians along the route

Considering where 20mph limits might be appropriate to make it safer for those walking and cycling and adding in design features to support this

Deciding on how to prioritise different elements of the scheme for delivery

Next Steps

Now the consultation is complete, we will review the designs as set out above and update these with any necessary changes.

We will then move to working on fully detailed designs ready for construction, which we hope will begin during 2025.

We would like to thank everyone who has taken the time to get involved in the projects so far – your feedback has been invaluable to us in shaping the proposals.

We will post any further updates on our website as the project progresses.



If you need help to understand this information in another language please call **03456 066 067**.

Se precisar de ajuda para ler estas informações em outra língua, por favor telefone para o número abaixo. 03456 066 067

Portuguese

Jeigu jums reikia šios informacijos kita kalba, paskambinkite 03456 066 067

Lithuanian

Jeżeli potrzebujesz pomocy w zrozumieniu tych informacji w swoim języku zadzwoń na podany poniżej numer. 03456 066 067

Polish

Dacă aveți nevoie de ajutor pentru a înțelege această informație într-o altă limbă, vă rugăm să telefonați la numărul 03456 066 067

Romanian

إذا كنت بحاجة إلى المساعدة في فهم هذه المعلومات بلغة أخرى، الرجاء الاتصال على 03456 066 067

Arabic

Если для того чтобы понять эту информацию Вам нужна помощь на другом языке, позвоните, пожалуйста, по телефону 03456 066 067

Russian

If you would like this information in another format, including audio or large print, please call **03456 066 067**.

 **recycle**
for Suffolk

