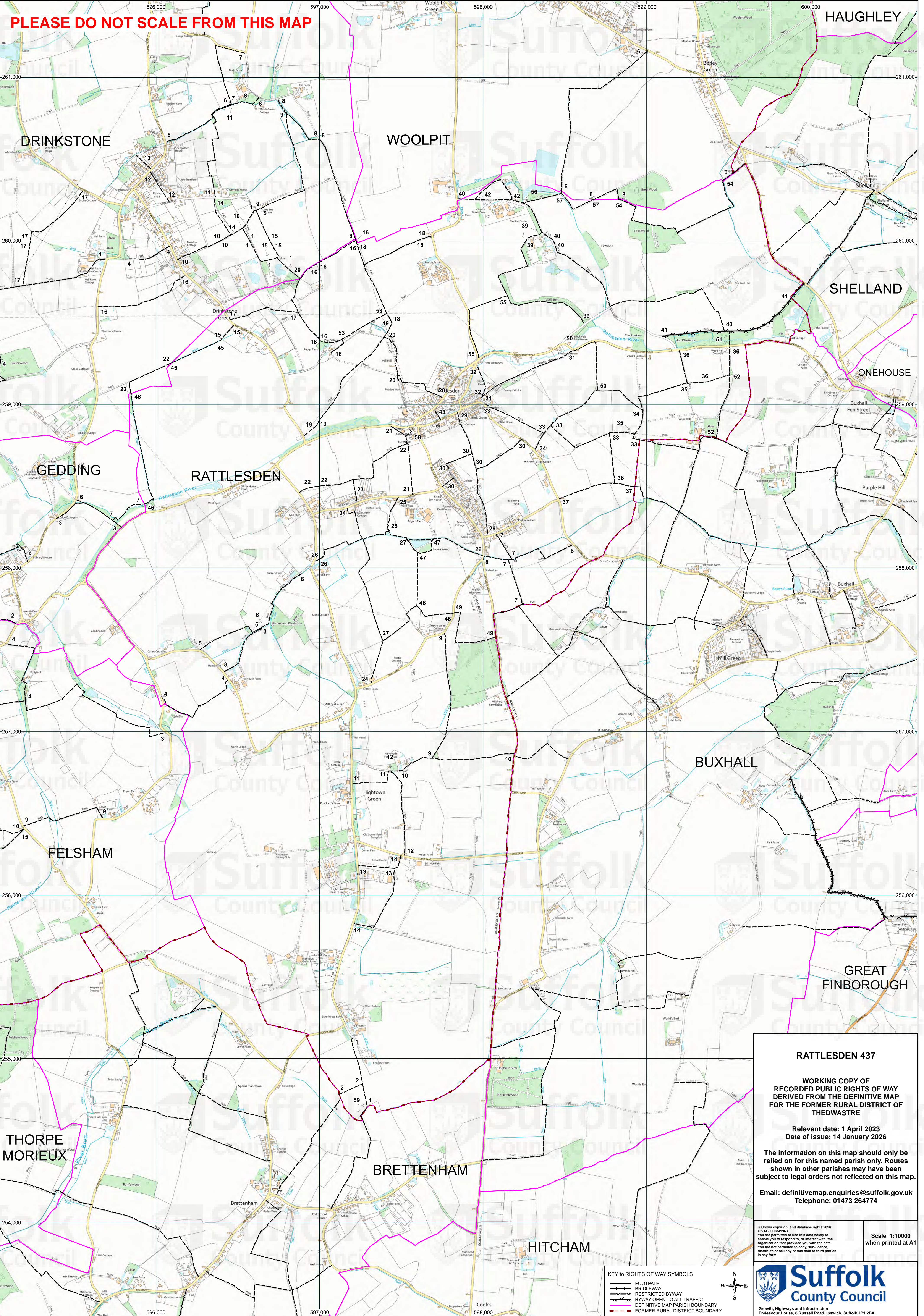


PLEASE DO NOT SCALE FROM THIS MAP



**KEY TO RIGHTS OF WAY SYMBOLS**

- FOOTPATH
- BRIDLEWAY
- RESTRICTED BYWAY
- BYWAY OPEN TO ALL TRAFFIC
- DEFINITIVE MAP PARISH BOUNDARY
- FORMER RURAL DISTRICT BOUNDARY



**RATTLESDEN 437**

**WORKING COPY OF  
RECORDED PUBLIC RIGHTS OF WAY  
DERIVED FROM THE DEFINITIVE MAP  
FOR THE FORMER RURAL DISTRICT OF  
THEDWASTRE**

Relevant date: 1 April 2023  
Date of issue: 14 January 2026

The information on this map should only be  
relied on for this named parish only. Routes  
shown in other parishes may have been  
subject to legal orders not reflected on this map.

Email: [definitivemap.enquiries@suffolk.gov.uk](mailto:definitivemap.enquiries@suffolk.gov.uk)  
Telephone: 01473 264774

© Crown copyright and database rights 2026  
OS AC00004992.  
You are permitted to use this data solely to  
enable you to respond to, or interact with, the  
organisation that provided you with the data.  
You are not permitted to copy, sub-licence,  
distribute or sell any of this data to third parties  
in any form.

Scale 1:10000  
when printed at A1

**Suffolk  
County Council**

Growth, Highways and Infrastructure  
Endeavour House, 8 Russell Road, Ipswich, Suffolk, IP1 2BX.