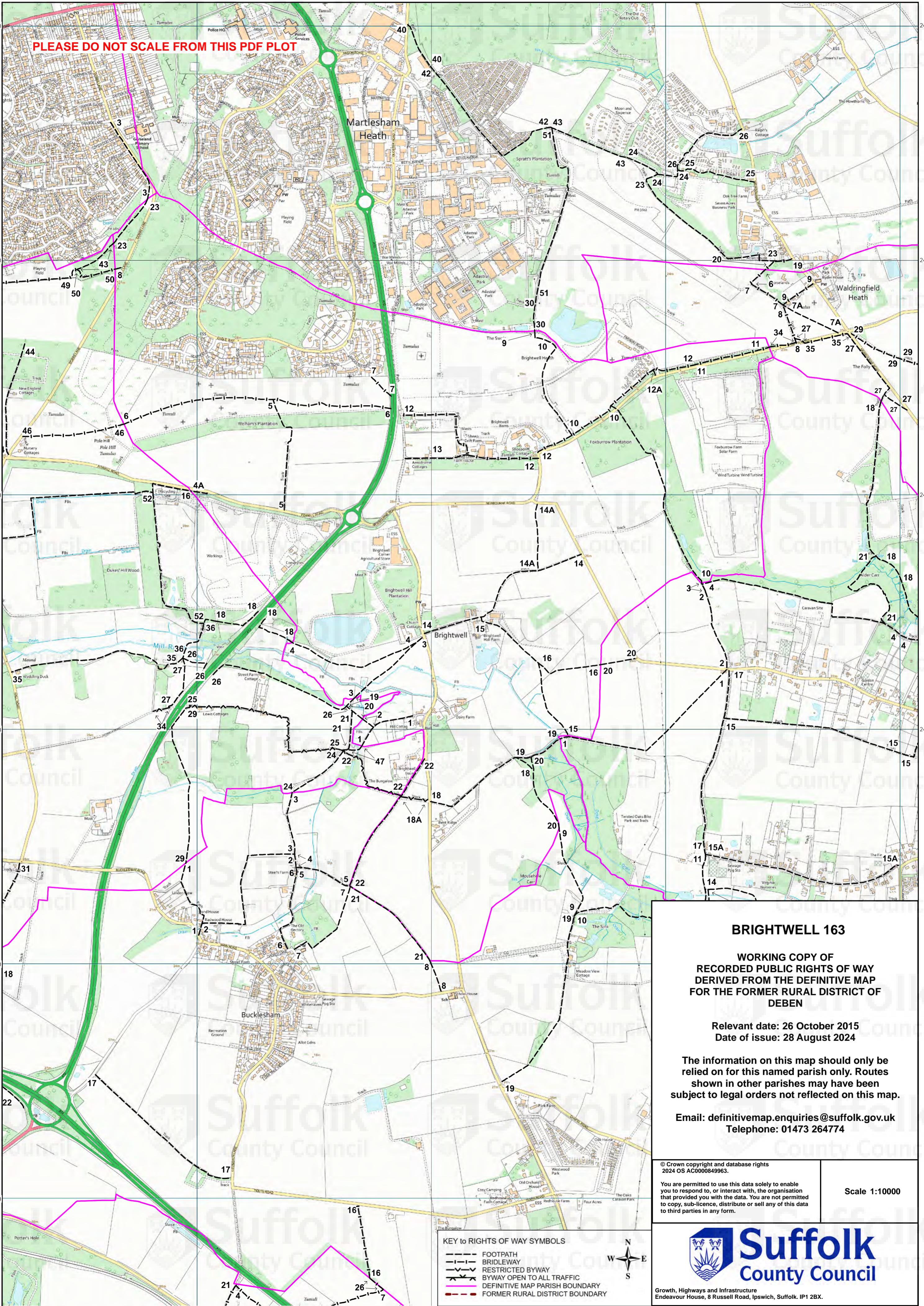


PLEASE DO NOT SCALE FROM THIS PDF PLOT



BRIGHTWELL 163

WORKING COPY OF
RECORDED PUBLIC RIGHTS OF WAY
DERIVED FROM THE DEFINITIVE MAP
FOR THE FORMER RURAL DISTRICT OF
DEBEN

Relevant date: 26 October 2015
Date of issue: 28 August 2024

The information on this map should only be
relied on for this named parish only. Routes
shown in other parishes may have been
subject to legal orders not reflected on this map.

Email: definitivemap.enquiries@suffolk.gov.uk
Telephone: 01473 264774

© Crown copyright and database rights
2024 OS AC0000849963.

You are permitted to use this data solely to enable
you to respond to, or interact with, the organisation
that provided you with the data. You are not permitted
to copy, sub-licence, distribute or sell any of this data
to third parties in any form.

Scale 1:10000

- KEY to RIGHTS OF WAY SYMBOLS
- FOOTPATH
 - - - BRIDLEWAY
 - · - · - · RESTRICTED BYWAY
 - · - · - · BYWAY OPEN TO ALL TRAFFIC
 - DEFINITIVE MAP PARISH BOUNDARY
 - · - · - · FORMER RURAL DISTRICT BOUNDARY



Growth, Highways and Infrastructure
Endeavour House, 8 Russell Road, Ipswich, Suffolk, IP1 2BX.