



### Site Layout

The building form for the secondary school adopts an 'L' shape with the majority of the teaching accommodation located in the eastern three storey wing of the building which is orientated east/west to allow for consistent harnessing of daylight and the ability to control solar glare along the long faces of the building.

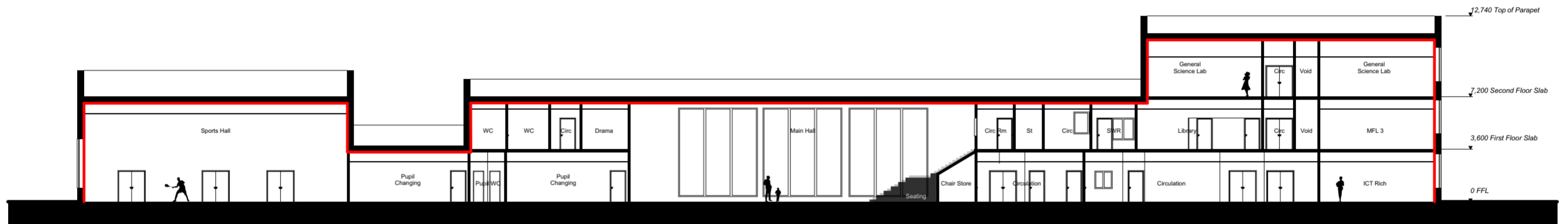
It is proposed that the Dining and Hall spaces will be located centrally, in the other wing, facing the carpark to the south and the fields to the north, promoting pupil flow and visual connection through this communal space to the playing fields.

The sports hall will be located on the western side of the building closest to the temporary vehicular entrance off Westerfield road, to provide ease of access to this facility from the road and carpark in order to promote community use.

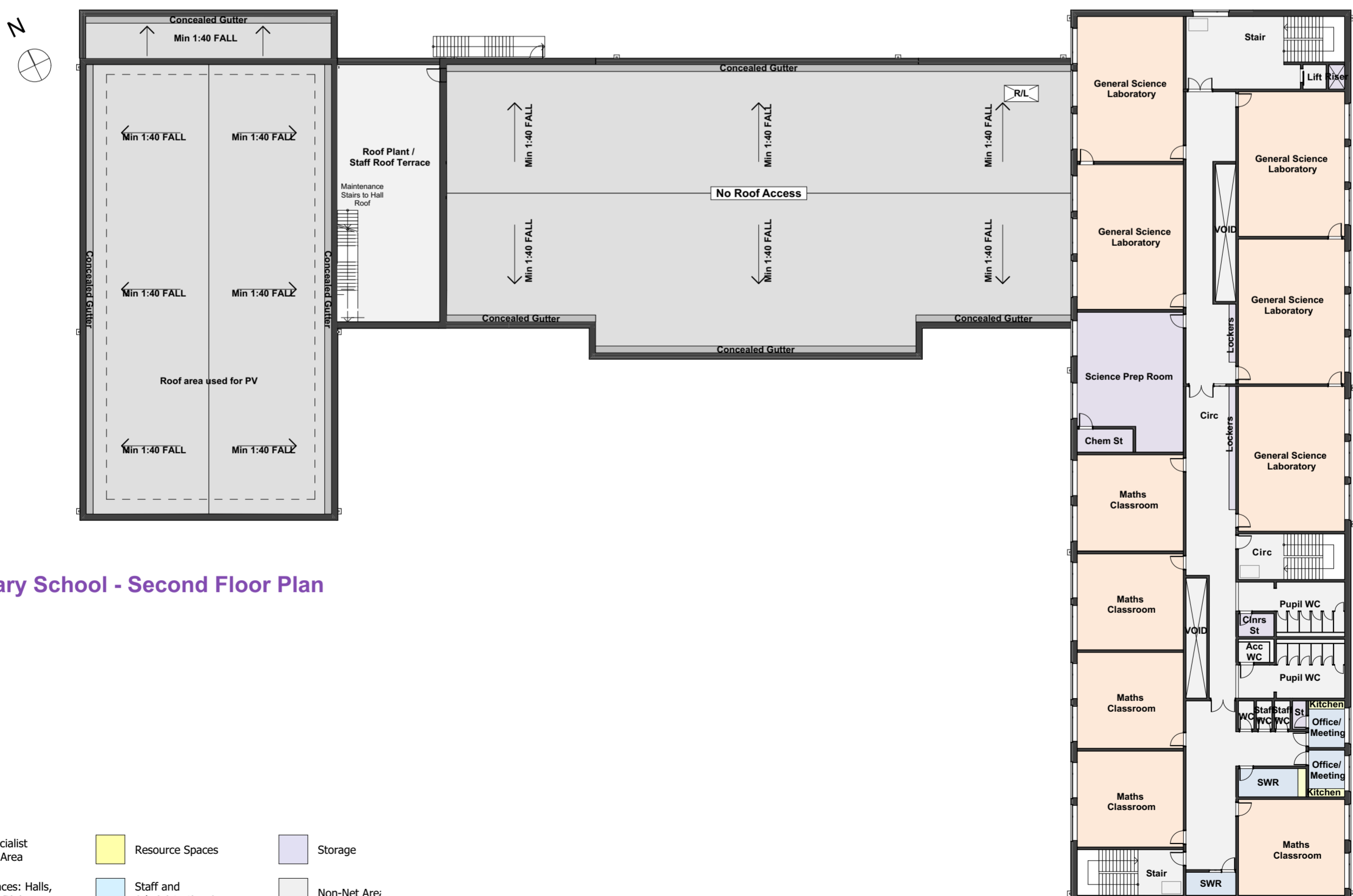
It is proposed that the primary school is located towards the south eastern corner of the site and has been designed as a singular linear form to create a secure line between the carpark at the front and the playing fields to the north.

There is a surface water drainage ditch which runs across the site which is proposed to be used as a natural boundary feature between the primary and secondary school sites. This feature will also be used to provide a sustainable urban drainage basin for surface water management whilst providing an opportunity for the creation of a habitat and wildlife corridor to complement the teaching curriculum and provide areas of ecological stimulation.

### Masterplan Massing



### Secondary School Section



### Secondary School - Second Floor Plan

- Zone Legend**
- Basic/Specialist Teaching Area
  - Resource Spaces
  - Storage
  - Large Spaces: Halls, Studios & Dining
  - Staff and Administration Areas
  - Non-Net Area

# Red House Neighbourhood New Educational Provision

