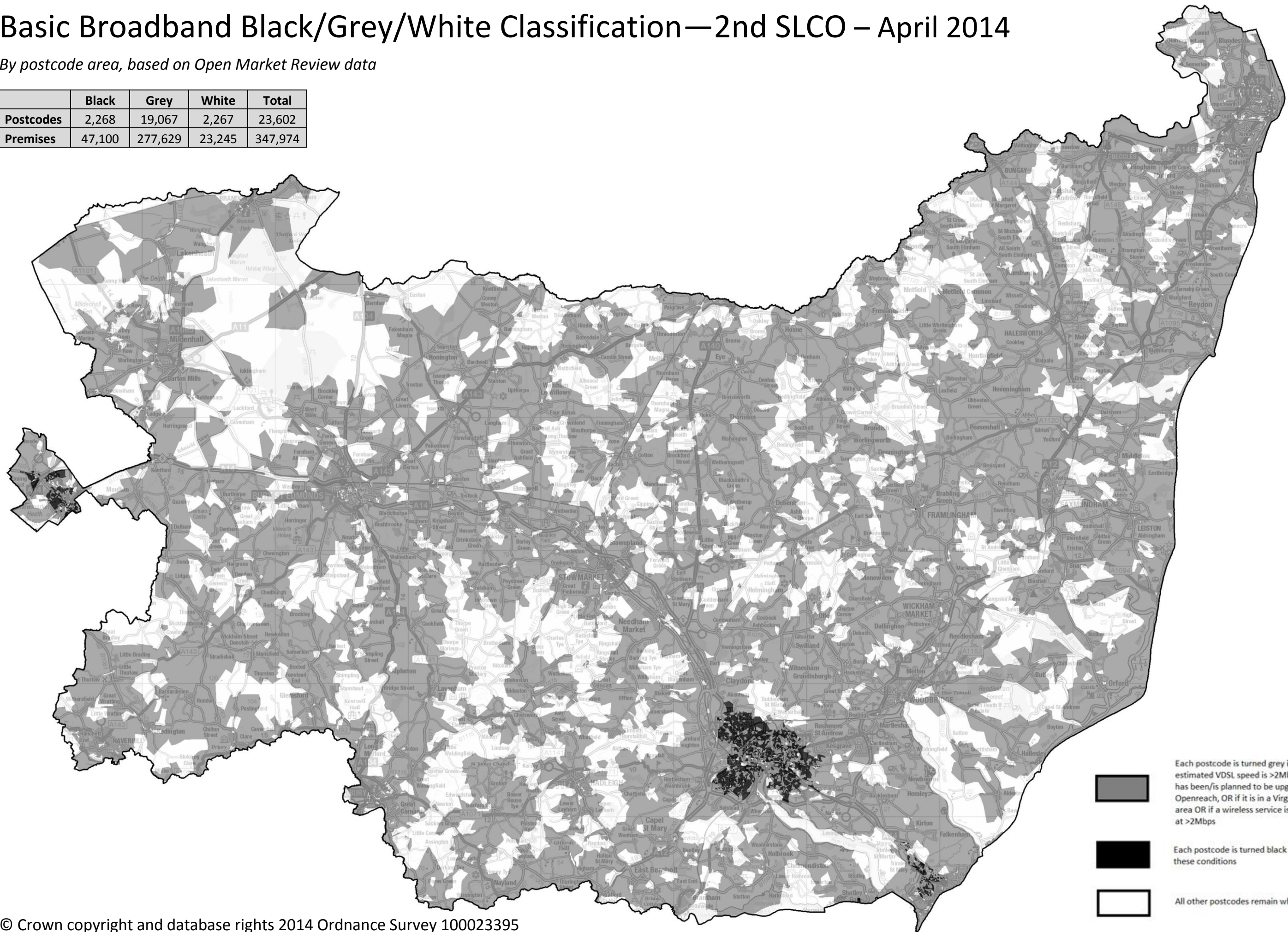


Basic Broadband Black/Grey/White Classification—2nd SLCO – April 2014

By postcode area, based on Open Market Review data

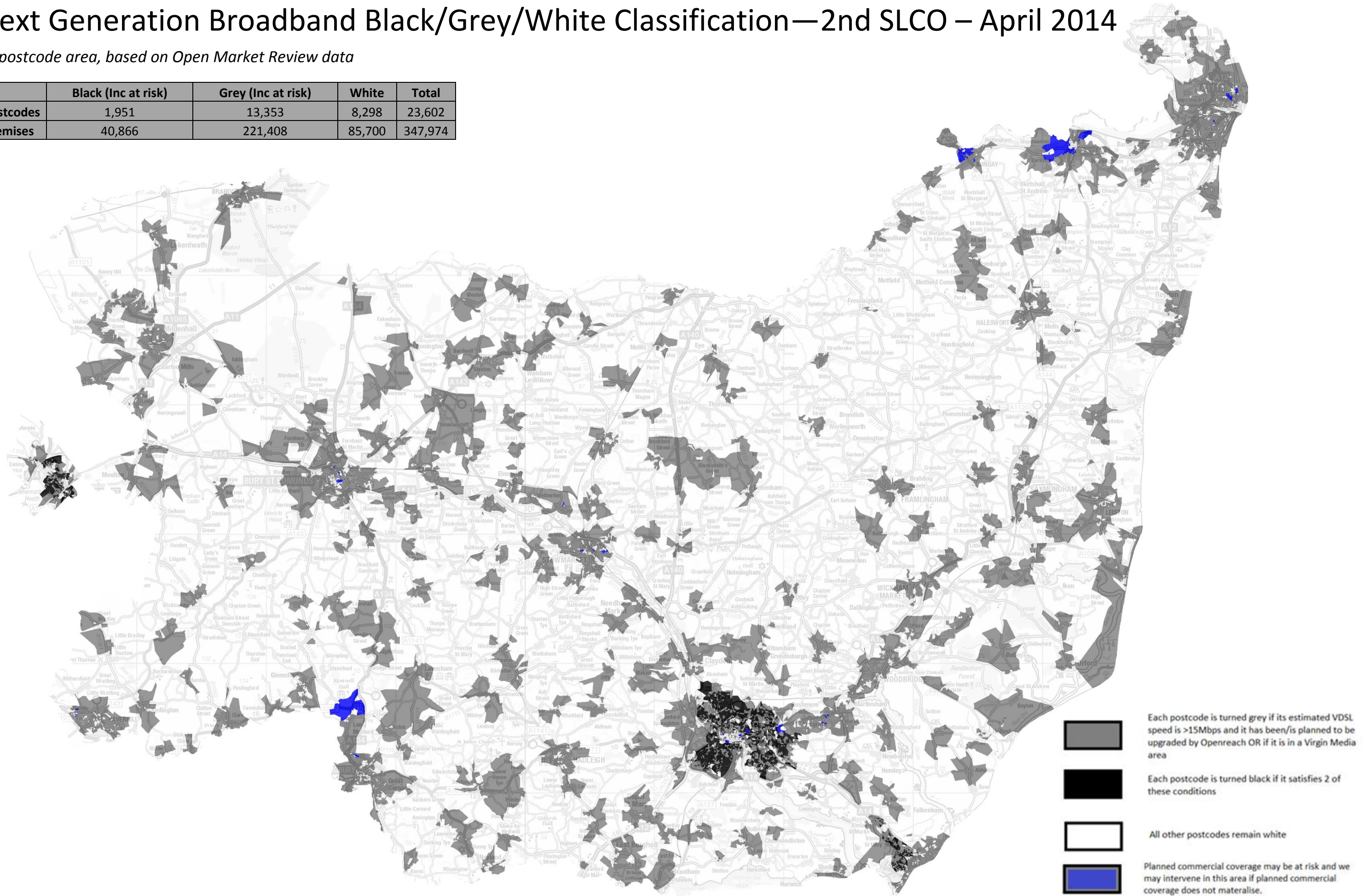
	Black	Grey	White	Total
Postcodes	2,268	19,067	2,267	23,602
Premises	47,100	277,629	23,245	347,974



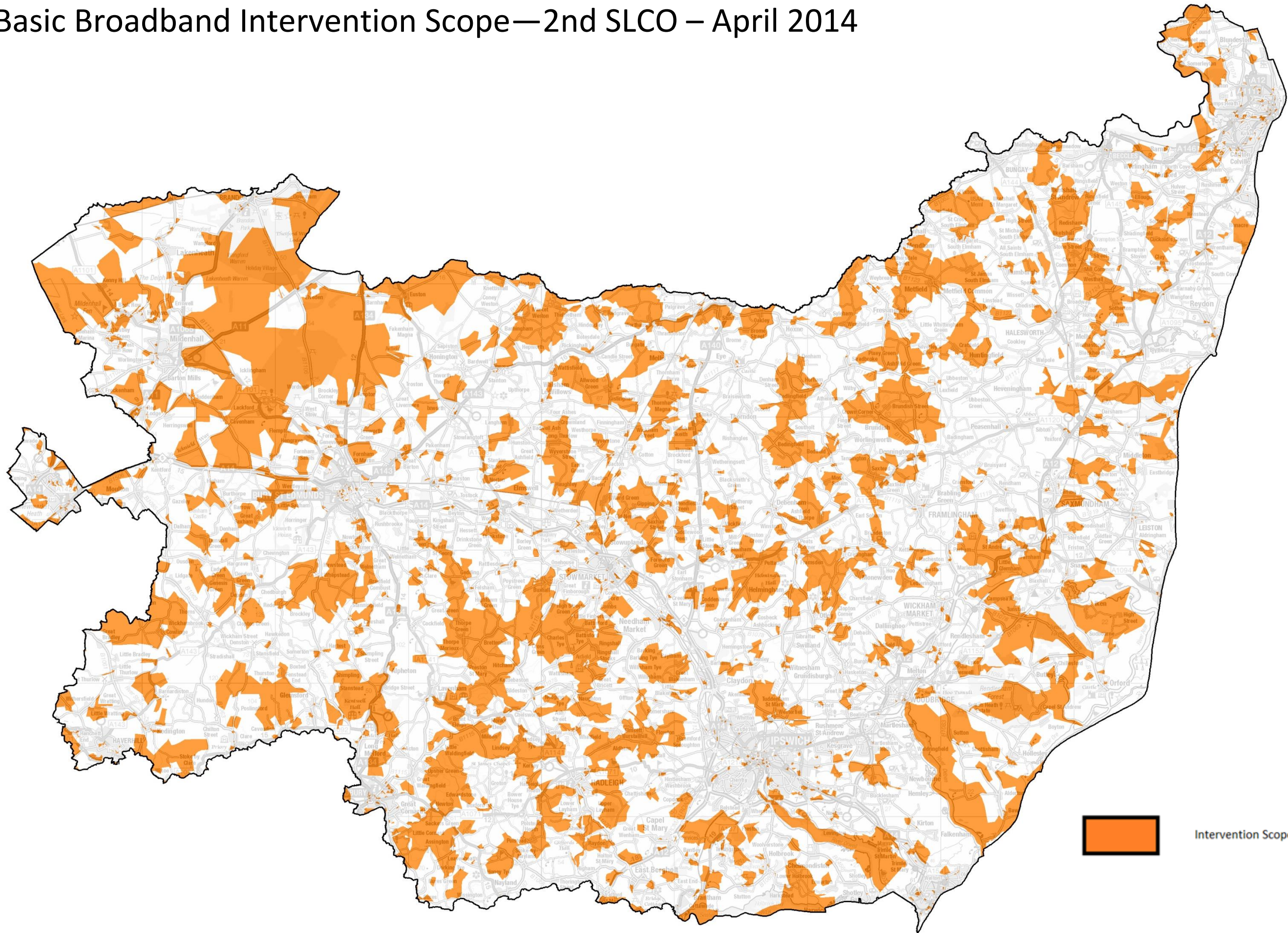
Next Generation Broadband Black/Grey/White Classification—2nd SLCO – April 2014

By postcode area, based on Open Market Review data

	Black (Inc at risk)	Grey (Inc at risk)	White	Total
Postcodes	1,951	13,353	8,298	23,602
Premises	40,866	221,408	85,700	347,974



Basic Broadband Intervention Scope—2nd SLCO – April 2014



NGA Intervention Scope—2nd SLCO – April 2014

