



## EBSA Reintegration – Y9/10

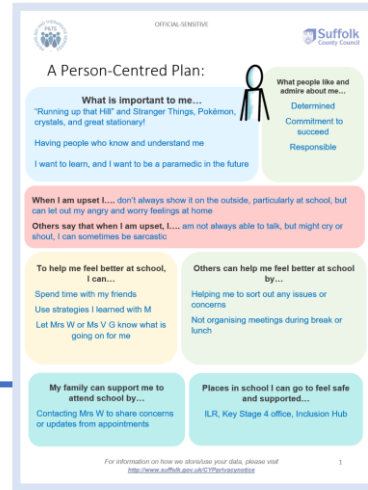
### What were we asked to do?

Provide transition support for a young person who had been out of education for over 18 months.



### What did we do?

- Use an Ideal School to identify what the young person felt was important for them to be able to re-integrate.
- Created an EBSA One Page Plan to co-ordinate support, share the young person's voice and ensure collaborative planning between young person, family and school.



### Who else did we support?

Parent feedback:

*“The IF helped my daughter manage her feelings, support her with a new school transition and support for myself. This would not be possible without the IF's support.”*

### Impact

- The young person is attending school with a bespoke plan for in school support, accommodation of their additional needs and a clear method of communication between home and school.
- The young person and their parent felt well supported to navigate the reintegration process.
- School had a deeper understanding of the young person's views, needs and the way to approach their offer of support.

...tailored to meet every individual's needs, just get in touch: [IF@suffolk.gov.uk](mailto:IF@suffolk.gov.uk)...