

Electoral Division Profile

Framlingham (50)

This Division comprises Framlingham, Hacheston and Peasenhall wards.

September 2009

Contents:

1. Demographic Profile: age and ethnicity
2. Economic and Labour Market data
3. School inspection outcomes and attainment 2006-7
4. Index of Multiple Deprivation

Maps

1. Parish, ward boundaries and schools
2. Index of Multiple Deprivation

Produced by
Suffolk County Council
Research and Intelligence Team
Contact: Lyn Baran. Lyn.baran@suffolk.gov.uk

Electoral Division Profiles: an introduction

These documents have been produced to support elected members, constituents and other interested parties in understanding the demographic, economic and educational profile of their neighbourhoods. We have used the latest data available at the time of publication.

Much more data is available from national and local sources than is captured here, but it is hoped that the profile will be useful starting point for discussion, where local knowledge and experience can be used to flesh out and illuminate the statistical evidence base presented here.

The profile can be used to look at some fundamental questions e.g.

- How many people make up the population of the Division? Does the age profile match or differ from the national profile? Is there evidence of the ageing profile of the county in all the wards in the Division or just some? How diverse is the community in terms of ethnicity?
- What are the circumstances affecting people in the area? Are levels of deprivation uniform across the area or are there variations? What is the impact of deprivation on families and residents? Does there seem to be a link between deprivation and school performance?
- The data on employment shows which sectors employees in the area work in. The job seekers allowance claimants data shows the changing numbers of claimants over the past four years. Is the impact of the recession locally related to the employment profile of the area?

This is the first time that Electoral Division Profiles have been produced in Suffolk, and we welcome feedback on both the content and format of the documents.

Lyn Baran
Head of Research and Intelligence
Planning and Performance Improvement
Suffolk County Council
Lyn.Baran@suffolk.gov.uk
01473 264547

Technical Notes:

1. Where Electoral Divisions do not exactly match ward boundaries, we have adopted a "best fit" approach to produce a dataset.
2. Where data is not available at ward level, we have used the relevant District level data to offer a comparison.
3. County level data is provided where possible to provide a context for comparisons.

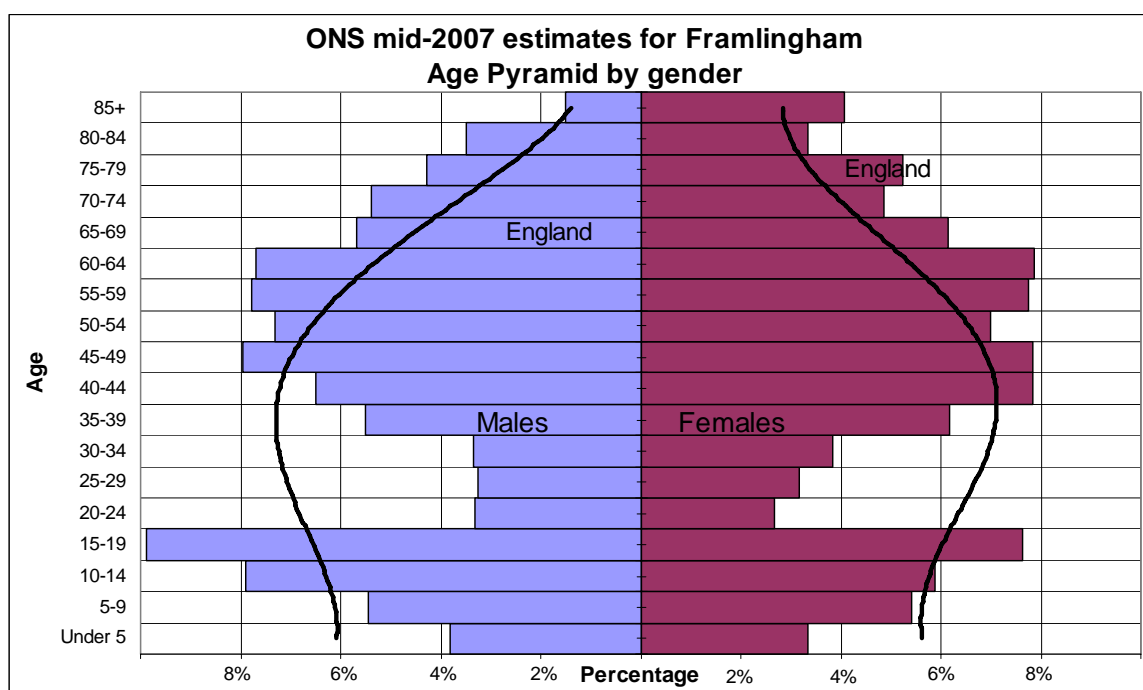
1. Demographic profile

At the time of the 2001 Census 8,539 people lived in Framlingham Division. This figure includes boarders at Framlingham and Brandeston Colleges, many of whom are from abroad. Since then the population has increased by 5.5% reaching 9,037 by mid-2007.

The age structure of the component wards and the Division as a whole as at mid-2007 is set out below.

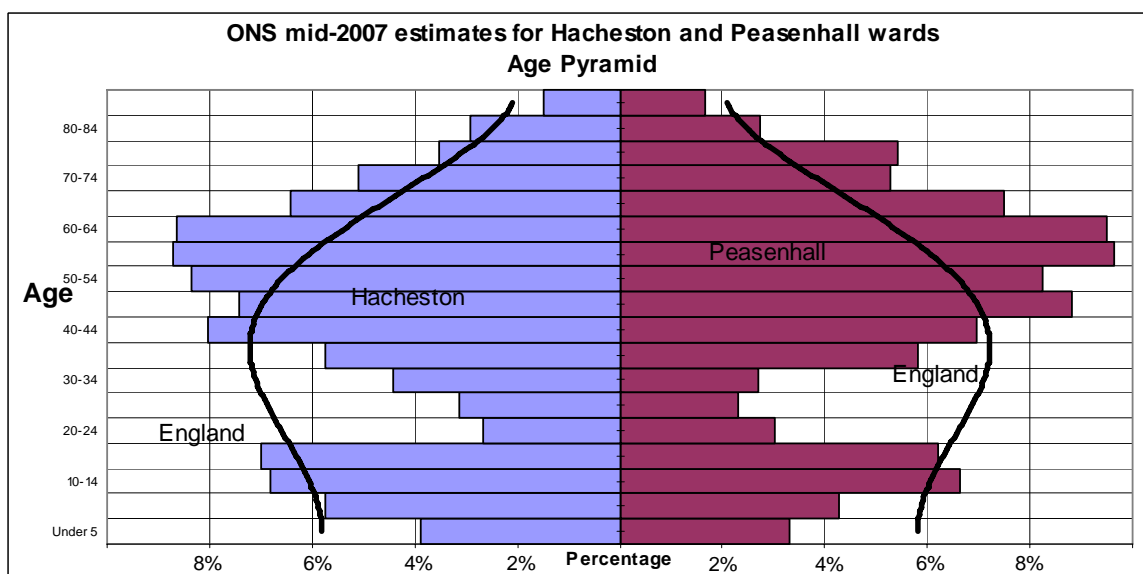
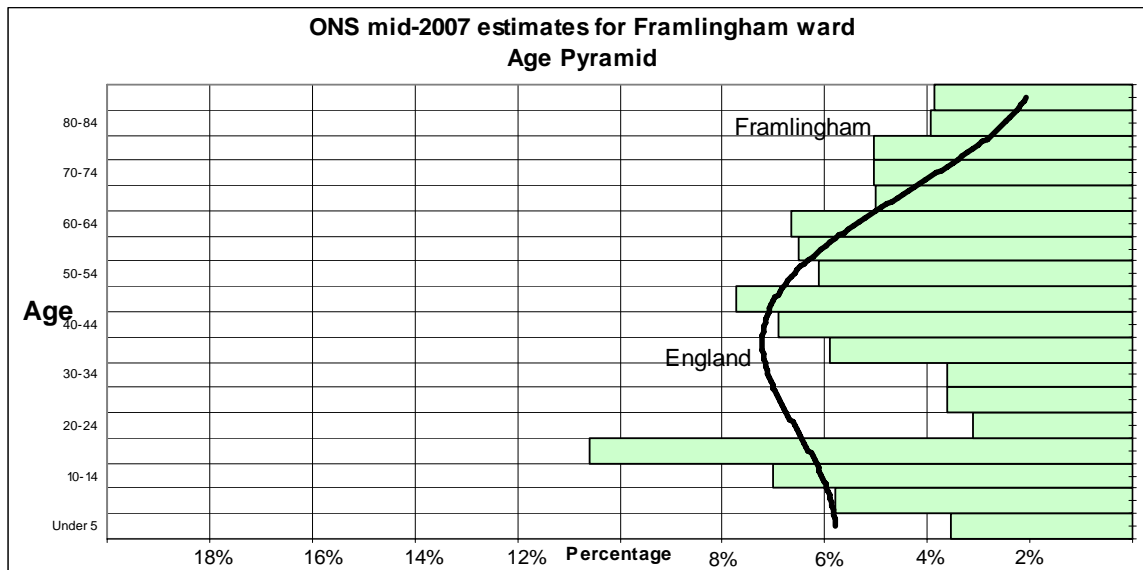
	Component wards			Framlingham Electoral Division
	Framlingham ward	Hacheston ward	Peasehall ward	
All Ages	2,084	2,131	4,822	9,037
0-4	69	83	170	322
5-9	89	122	279	490
10-14	138	145	338	621
15-19	129	149	511	789
20-24	63	57	150	270
25-29	48	67	174	289
30-34	56	94	174	324
35-39	121	122	285	528
40-44	145	171	333	649
45-49	184	158	372	714
50-54	172	178	295	645
55-59	201	186	314	701
60-64	198	184	321	703
65-69	156	137	241	534
70-74	110	109	244	463
75-79	113	75	244	432
80-84	57	62	190	309
85+	35	32	187	254

Source: Office for National Statistics (ONS) 2001 & 2007 mid year population estimates.



Framlingham: Electoral Division profile - September 2009

The age pyramid for Framlingham shows a higher than average proportion of people over the age of 45, boys aged 10-19 and girls aged 15-19 (from Framlingham College and Brandeston College), whilst there is a much lower than average number of 0-4 and 20-39 year olds.



- The two wards of Hacheston and Peasenhall have similar age distributions, but none of the wards that constitute this Division has a profile that matches the national picture.
- The age profile of Framlingham ward is dominated by the students at the college as over 10% of residents are aged 15 to 19. This ward has a shortfall of young adults aged 20 to 39 but mirrors the national picture for ages over 55.
- Hacheston and Peasenhall wards both have a shortfall of young adults (age 20 to 39) and children aged under 10. Both too have greater proportions than nationally of people aged 45 or more.

Ethnicity

- At the time of the 2001 census, Framlingham had a population of 8,539 people, of which 98.24% (8,389) were white, all but 224 of whom were white British.
- There were 150 (1.76%) people of black or minority ethnic origin in the division. Framlingham ward is unusual in that a large number of Chinese students attend the College which impacts on this particular statistic.

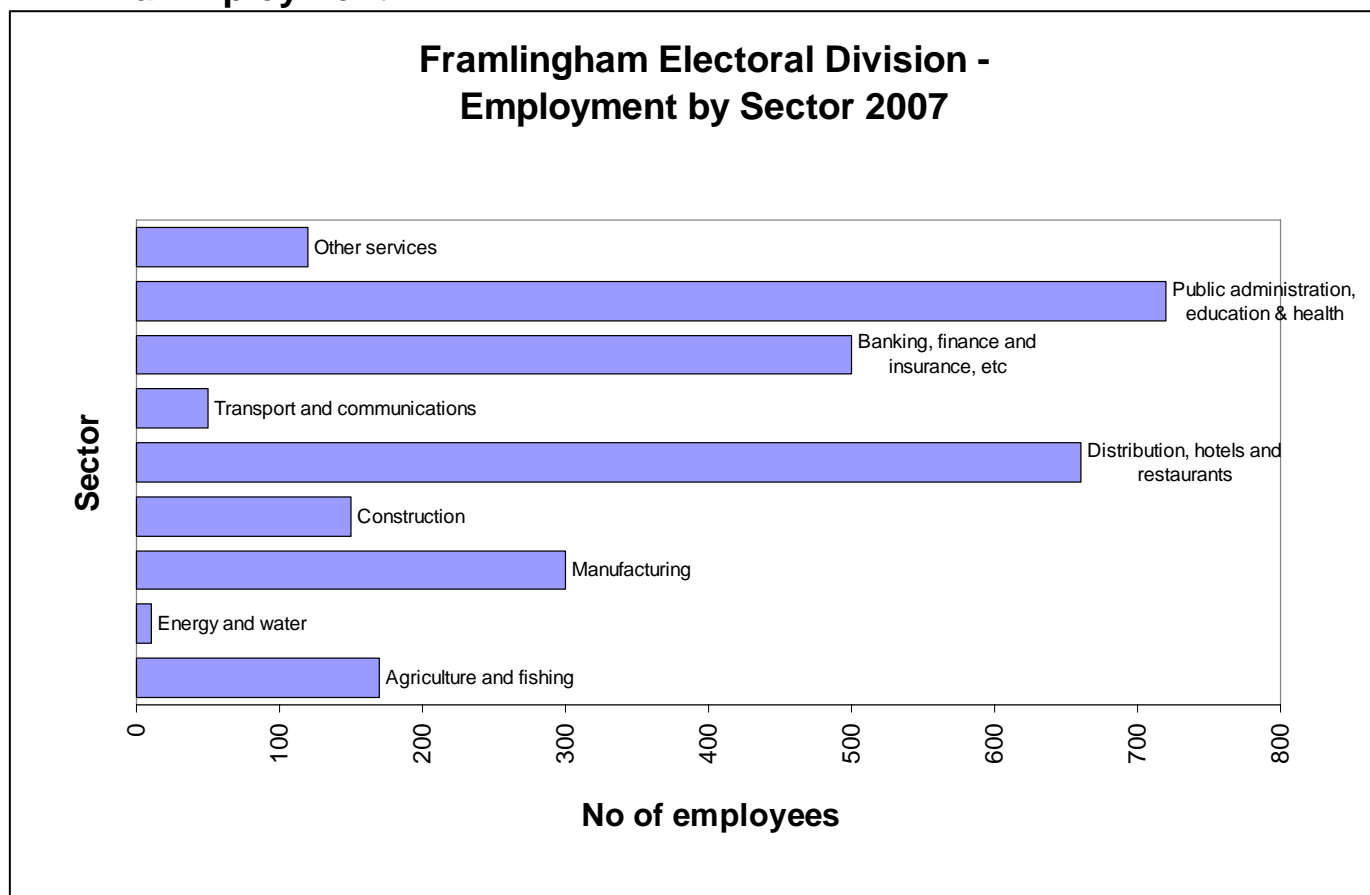
		All people	White	White British	Mixed	Asian and Asian British	Black and Black British	Chinese or Other Ethnic Group	Black or Minority Ethnic Group
SUFFOLK		668,553	97.24	93.75	1.05	0.59	0.64	0.48	2.76
Framlingham	No.	8,539	8,389	8,165	39	11	21	79	150
	%		98.24	95.62	0.46	0.13	0.25	0.93	1.76

The latest ethnicity data are the 2007 district estimates; the table relevant to this Division is below.

	All people	Percentage						
		White	White British	Mixed	Asian and Asian British	Black and Black British	Chinese or Other Ethnic Group	Black or Minority Ethnic Group
Suffolk Coastal	124,400	95.4	92.0	1.2	1.3	0.8	1.3	4.6

2. Economic and labour market data

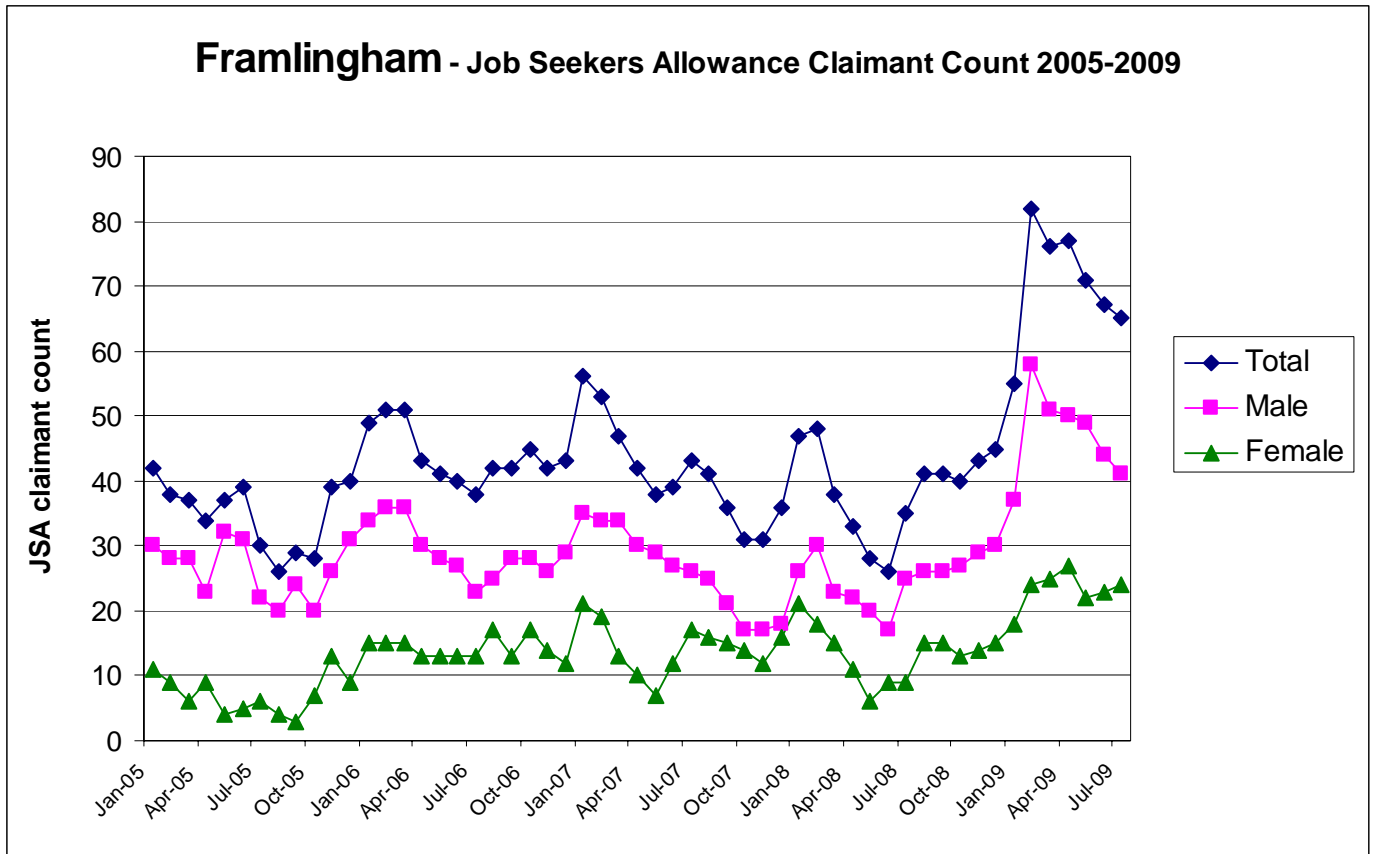
2a Employment



Source: Annual Business Inquiry (2007)

- Employment in Framlingham is dominated by the public administration, education and health, banking, finance and insurance and distribution, hotels and restaurants (including retail) sectors.
- There is also a significant manufacturing sector in the division.

2b Unemployment/benefit claimants



- Like much of the county, and indeed the country, Framlingham has seen a dramatic rise in Job Seekers Allowance (JSA) claimants in the past year as the global economic downturn continues.
- There has been a small decline in claimants in the division during the last five months, in line with the county trend.
- Males generally account for around two-thirds of the total JSA claimant count.
- In percentage terms, around 4.2% of the working age population (males aged 16-64 and females aged 16-59) are claiming JSA. This is above the county, regional and national level.

3. Schools (see Map)

There are 3 primary schools and 1 high school in this Division.

Latest Ofsted School Inspection Outcome

Grade 1	Outstanding
Grade 2	Good
Grade 3	Satisfactory
Grade 4	

Dennington CEVC Primary	Grade 2	June 2006.
Peasenhall Primary	Grade 2	Feb. 2009.
Sir Robert Hitcham's CEVA Primary	Grade 2	April 2008
Thomas Mills High School	Grade 1	Oct. 2006

Attainment Results 2007-9

Note: small cohort size can lead to fluctuations in results. Green shading indicates a result significantly better than the county average whereas red shading indicates a result significantly worse than the county average.

Foundation Stage Profile (reception) % pupils achieving expected score of 78 points or more	Average cohort size	2006/7	2007/8	2008/9	2008/9 county average
Dennington CEVC Primary	6	57.1	50	50	74.5
Peasenhall Primary	3	100	100	100	74.5
Sir Robert Hitcham's CEVA Primary	41	87.8	85	83.3	74.5

Key Stage 2 (age 11) % pupils achieving L4 or above	Average cohort size	2006/7	2007/8	2008/9	2008/9 county average
Dennington CEVC Primary	13				
English L4+		100	80	85	77.6
Maths L4 +		100	80	69	74.9
Peasenhall Primary					
English L4+					77.6
Maths L4 +					74.9
Sir Robert Hitcham's CEVA Primary	48				
English L4+		98	88	86	77.6
Maths L4 +		86	85	86	74.9

KS4 (age 16) % pupils achieving 5 A*-C in English and Maths	Average cohort size	2006/7	2007/8	2008/9*	2008/9 * county average
Thomas Mills High School	164	68	66	77.8	49.6

* 2009 results are provisional and will not be confirmed until late 2009.

4. Index of Multiple Deprivation (IMD) 2007 (see map)

Source: The IMD combines a number of indicators, chosen to cover a range of economic, social and housing issues, into a single deprivation score for each small area in England. This allows each area to be ranked relative to one another according to their level of deprivation. Small areas (LSOAs) are most usually described as being in 1 of 5 quintile bands. The bottom quintile represents the 20% of areas that are the most deprived in the country; these are shaded red on the map. The top quintile represents the least deprived areas in the country, and is shaded green.

The Index is used widely to analyse patterns of deprivation, identify areas that would benefit from special initiatives or programmes and as a tool to determine eligibility for specific funding streams.

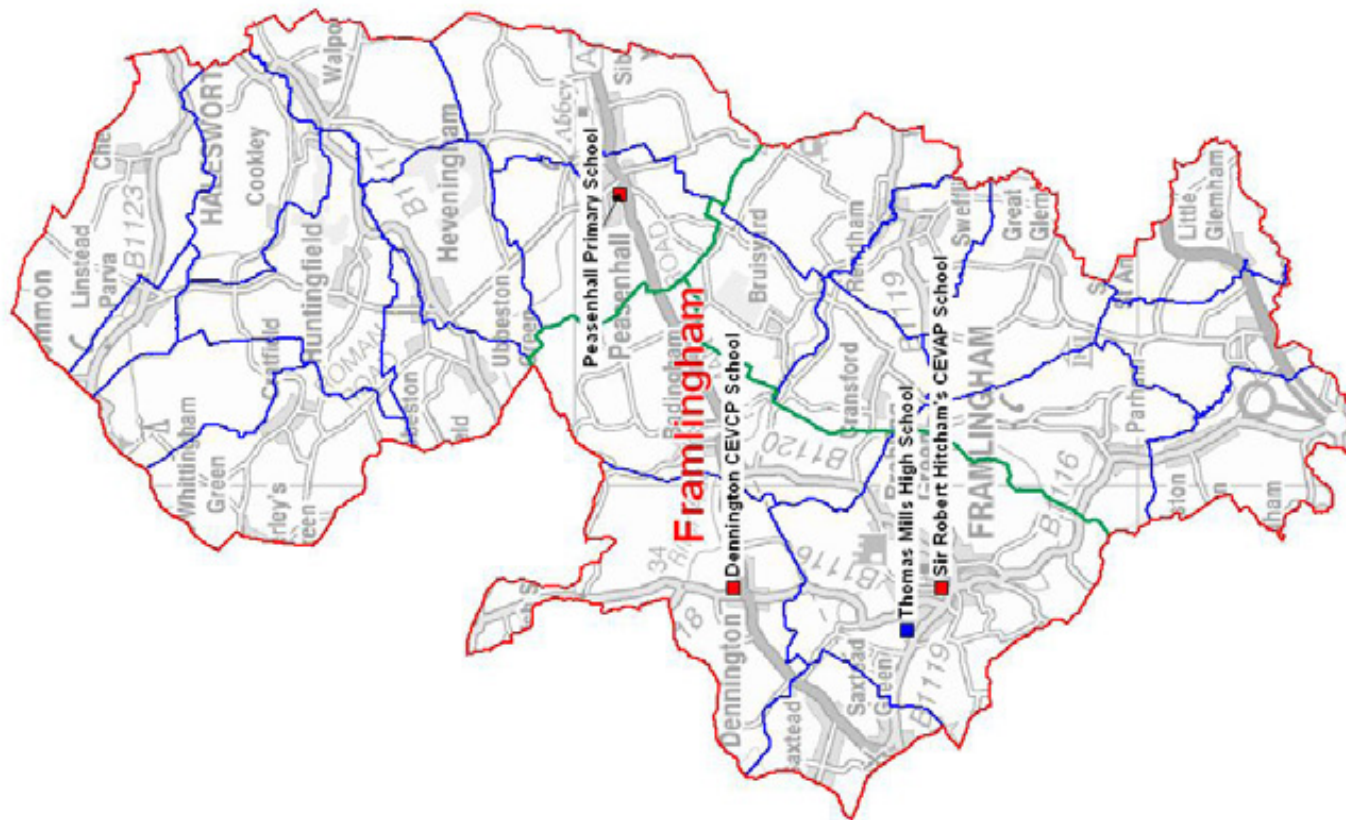
The IMD 2007 shows that:

Deprivation levels in Framlingham are below the national average.

- Of the five Lower Layer Super Output Areas (LSOA) comprising the Electoral Division, two are ranked in the top 20% least deprived LSOAs in the country, one is in the next best quintile and two are in the mid quintile.

Rankings in England - no. of LSOAs per quintile

	Suffolk	%	Electoral Division	%
Worst 20%	30	7.0%	0	0%
Next worst 20%	57	13.4%	0	0%
Mid 20%	92	21.6%	2	40%
Next best 20%	152	35.7%	1	20%
Least deprived 20%	95	22.3%	2	40%
Total	426		5	



LEGEND

- Primary Schools
- ▲ Middle Schools
- Secondary Schools

- Ward
- Parish
- Electoral Division



Research & Intelligence, Planning & Performance SSF, SCC
 Endeavour House, 8 Russell Road, Ipswich, Suffolk, IP1 2BX.

Scale 1:42000

© Crown Copyright. All rights reserved.
 Suffolk County Council Licence No. 100023395 2009

Framlingham Electoral Division

- Local Education Authority Schools
- Parish and Ward Boundaries

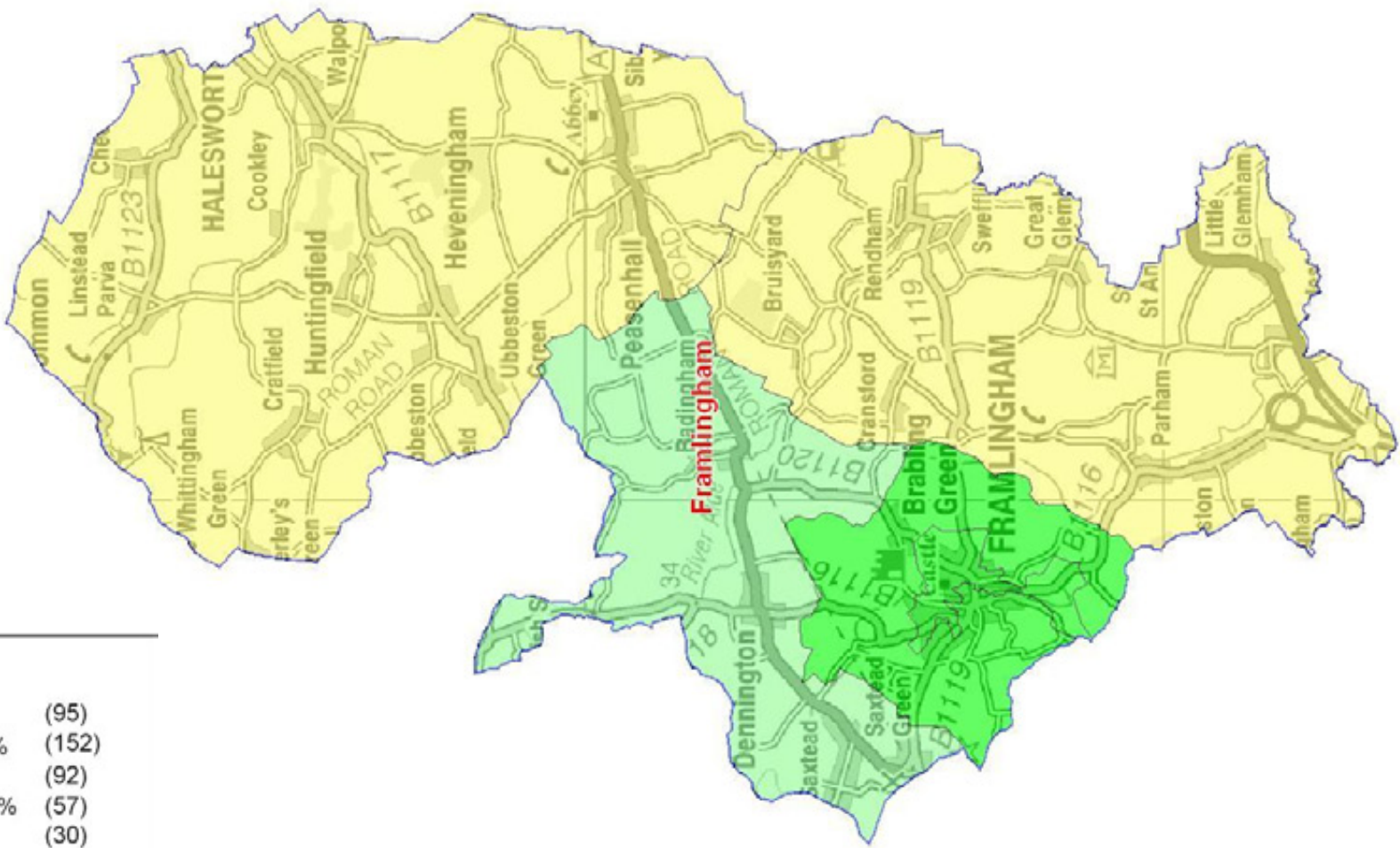
PRODUCED BY
 K Day

CHECKED BY

DRAWING No.

DATE

Framlingham: Electoral Division profile - September 2009



National Rank

Best 20%	(95)
Next Best 20%	(152)
Next worst 20%	(92)
Worst 20%	(30)



Research & Intelligence, Planning and Performance SSF, SCC
 Endeavour House, 8 Russell Road, Ipswich, Suffolk. IP1 2BX.

Scale 1:48000

© Crown Copyright. All rights reserved.
 Suffolk County Council Licence No. 100023395 2009

IMD 2007: Framlingham
 Electoral Division

PRODUCED BY
 K Day

CHECKED BY

DRAWING No.

DATE

Data sources

1. Office for National Statistics 2007 mid year population estimates and 2001 census www.ons.gov.uk
2. a) Office for National Statistics Annual Business Inquiry 2007
b) Office for National Statistics Job Seekers Allowance claimant count
3. Ofsted www.ofsted.gov.uk
4. Index of Multiple Deprivation 2007
www.communities.gov.uk/communities/neighbourhoodrenewal/deprivation/deprivation07/

For more information and the latest data, go to the Research and Intelligence pages on the Suffolk County Council website:

<http://www.suffolk.gov.uk/CouncilAndDemocracy/AboutSCC/SpecialistSupportFunctions/PlanningAndPerformanceImprovement/ResearchAndIntelligence.htm>

Research and Intelligence Team
Planning and Performance Improvement
Suffolk County Council
Endeavour House
Ipswich
IP1 2BX