

*Creating a*



safer  
stronger

Suffolk



*making our Community safer*

CRIME & DISORDER REDUCTION PARTNERSHIP  
STRATEGY 2005 - 2008

# LIST OF CONTENTS

	<b>Page(s)</b>
<b><u>Section 1 – Introduction</u></b>	1-3
• Statement of Purpose	1
• Purpose of Strategy	1
• Partnership Structure	2-3
• Structure of the Strategy	3
<b><u>Section 2 – A Local and National Overview</u></b>	3-6
• Links to Local Strategies and Plans	3-4
• National Priorities and Strategies	4-6
<b><u>Section 3 – Audit Findings</u></b>	6-11
• The District – An Overview	6
• Summary of the Audit Findings	7
• Audit Summary Consultation Document	8-9
• Consultation Feedback	9-11
<b><u>Section 4 – The Priorities</u></b>	11-12
• Strategic Aims	11
• Priority Development	11
• Drug and Alcohol Misuse	12
<b><u>Section 5 – Action Planning</u></b>	12
• The Action Planning Process	12
<b><u>Section 6 – Performance Management</u></b>	12-13
• Performance Management	12-13
• Monitoring and Evaluation	13
• Reporting Progress Against Drug and Alcohol Misuse	13
• Annual Reports	13
<b>Appendix 1:</b>	
• Recorded Crime BCS Comparator	14
<b>Appendix 2:</b>	
• Abbreviations used in the Strategy	15

## SECTION 1 - INTRODUCTION

### **Statement of Purpose**

The Waveney Crime and Disorder Reduction Partnership aims to work together to build a safer, stronger and more secure Suffolk.

### **Purpose of the Strategy**

The Crime and Disorder Act 1998 as amended by the Police Reform Act 2002 places a statutory duty on Waveney District Council, Suffolk County Council, Suffolk Constabulary, the Primary Care Trust, Suffolk Police Authority and the Suffolk Fire & Rescue Service to work together and with other agencies in the community, including the Suffolk Drug and Alcohol Action Team, to address community safety, crime and disorder and substance misuse. This body is known as the Waveney Crime and Disorder Reduction Partnership ('the Partnership').

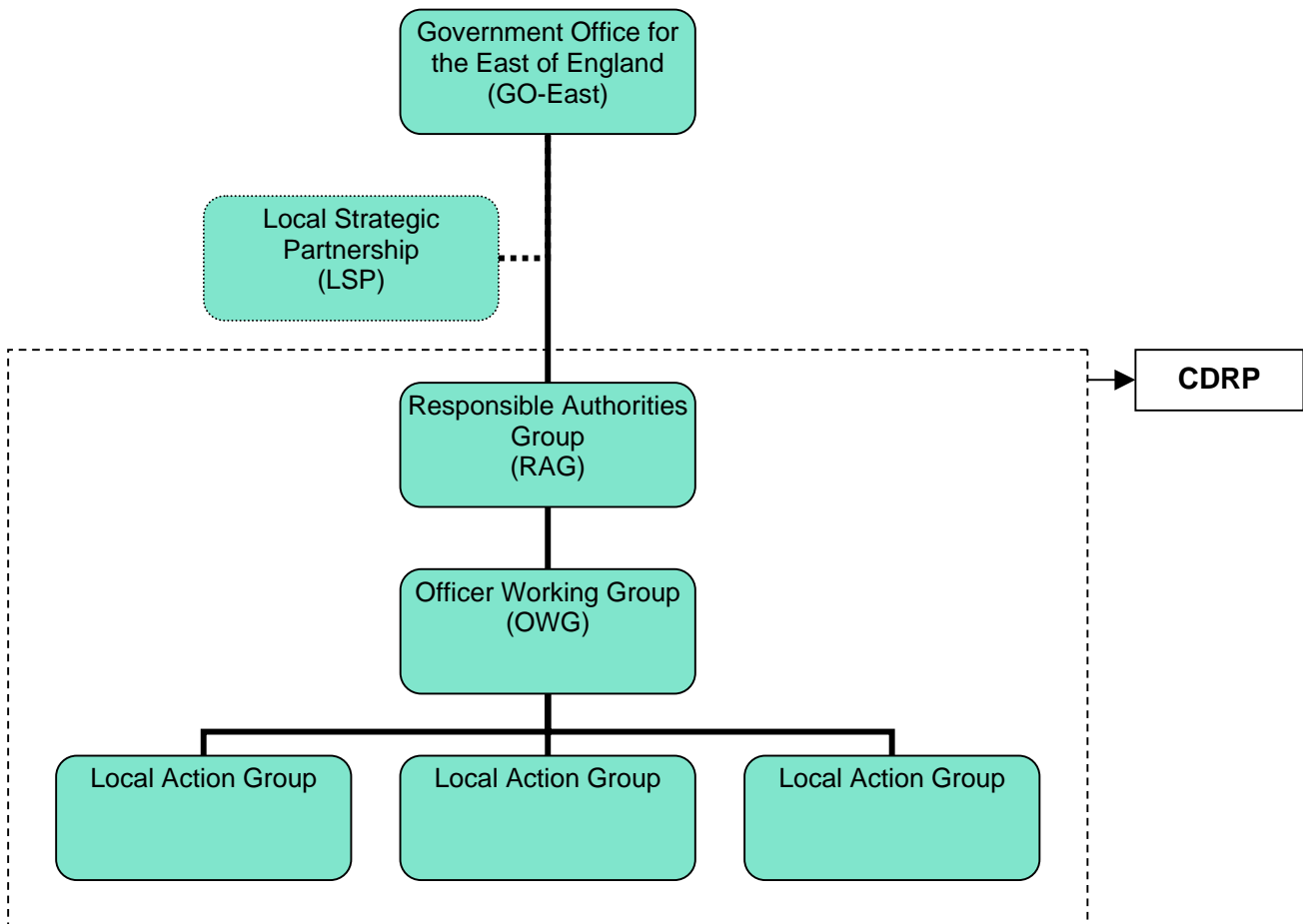
Every three years the Partnership is required to carry out an audit to identify the extent of the problems in the district and develop a strategy to deal with them. An audit of crime, disorder and drug misuse in Waveney was carried out during the summer of 2004 using data collected between April 2001 and March 2004. A summary document of the audit findings was then published in the autumn, inviting the community to comment and express their views and concerns.

The following three-year strategy has been written based on the audit findings and taking into account views expressed during the consultation period. There is a requirement for the strategy to include actions to tackle anti-social behaviour and substance misuse. More information can be found about these issues in Section 3 – Audit Findings and Section 4 – Priorities.

The strategy sets out the priorities, aims and objectives against which the Partnership's success will be measured. These performance indicators have been set in partnership with the Government Office for the East of England and have taken into account the requirements of the National Drug Strategy Performance Management Framework.

Historically, whilst work has been carried out by the Partnership to tackle drug and alcohol misuse, the Suffolk Drug and Alcohol Action Team has led the strategic response to this issue. However, it is widely recognised that there is an intrinsic link between substance misuse and crime, and for this reason this strategy has integrated the two agendas and has been written to complement the countywide Suffolk Drug and Alcohol Harm Reduction Strategy 2005-08 which has been published by the Suffolk Drug and Alcohol Action Team.

**Partnership Structure**



- GO-East** - The regional office of central government which brings together into a single operation the varied regional activities of a range of Government departments. The Crime Reduction Team within GO-East monitors and evaluates the work of the Partnership and manages national funding streams.
  
- Local Strategic Partnership** - A multi-agency partnership designed to improve communication and co-ordination of plans and strategies across agencies, with the overall aim of improving the quality of life and governance of Waveney. Crime is a key theme of the Local Strategic Partnership, and as such they link to the Crime and Disorder Reduction Partnership.
  
- Responsible Authorities Group** - The strategic decision-making body, as identified by the Crime and Disorder Act 1998. The Group comprises of members and officers of Waveney District Council, Suffolk County Council, Suffolk Constabulary, Suffolk Fire & Rescue Service, the Primary Care Trust, the Suffolk Drug and Alcohol Action Team and the Suffolk Police Authority.
  
- The Officer Working Group** - A multi-agency group attended by representatives of the key partners and agencies prescribed by the Crime and Disorder Act 1998 whose purpose is the daily implementation of the Partnership's priorities.

## **Local Action Groups**

- Thematic or geographically based multi-agency groups with the purpose of implementing the Partnership's action plans and achieving the targets outlined in the Strategy. These groups usually include representatives from statutory and voluntary agencies and members of the local community.

Terms of reference for Partnership subgroups are available from the Community Safety Officer at the District Council.

## **Structure of the Strategy**

The strategy document is laid out in six broad sections, each containing various subsections.

- Section 1 includes the introduction and the purpose of the strategy.
- Section 2 provides details of local and national plans and priorities which influence the Partnership's approach to community safety and drug and alcohol misuse issues within the district.
- Section 3 provides a brief outline of the audit findings and the rationale for selecting the Priorities.
- Section 4 outlines the Priorities.
- Section 5 explains the action planning process that will be adopted to ensure effective steps are taken to address the identified issues and
- Section 6 outlines the Monitoring and Evaluation Process that will be adopted by the Partnership.
- Appendix 1 lists the Home Office British Crime Survey (BCS) Comparator Recorded Crimes

## **SECTION 2 – A LOCAL AND NATIONAL OVERVIEW**

### **Links to local strategies and plans**

This strategy has been written to complement other strategies in place across the county relating to crime, disorder and drug and alcohol misuse to ensure a 'joined up' strategic approach to inter-agency working is adopted.

The Crime and Disorder Act 1998 provides local authorities, the police and other key partners with a legal framework to reduce crime and disorder. Within this, Section 17 of the Act requires local authorities, police authorities and other agencies to consider crime and disorder reduction and community safety in the exercise of all duties and activities.

In the spirit of Section 17 of the Crime and Disorder Act 1998, the Partnership is constantly striving to make links with key plans and targets produced within partner agencies to ensure that the impact on community safety, crime, disorder and substance misuse is considered by all officers when writing and updating plans and policies.

As priorities and targets are constantly being reviewed and amended it would be inappropriate to attempt to provide a definitive list. However the following plans and targets have been identified as having key links to the Crime and Disorder and Drug Misuse Reduction Strategy:

Waveney District Council Corporate Scorecard  
Waveney District Council Housing Strategy  
Local Strategic Partnership Community Plan  
Local Authority Public Service Agreement Targets  
Waveney PCT Local Delivery Plan  
Suffolk Constabulary Policing Plan  
Suffolk Drug and Alcohol Misuse Harm Reduction Strategy 2005-08  
Suffolk Fire & Rescue Service Community Fire Safety Plan  
Suffolk Youth Justice Plan  
Local Area Agreements

### **National Priorities and Strategies**

The following section outlines key legislation and strategies which impact on the work of the Partnership, and influences the priorities outlined in this strategy.

**Anti-Social Behaviour Act 2003:** The purpose of the Anti-social Behaviour Act is to provide the tools for practitioners and agencies to effectively tackle anti-social behaviour. It contains measures drawn up from across five Government Departments and builds on existing legislation to clarify, streamline and reinforce the powers that are available to practitioners.

For further information on the Act please visit the Home Office website at:  
[www.homeoffice.gov.uk/crime/antisocialbehaviour/legislation/asbact.html](http://www.homeoffice.gov.uk/crime/antisocialbehaviour/legislation/asbact.html)

**The Prolific and Other Priority Offenders Strategy:** This strategy is designed to tackle the most persistent and prolific offenders committing crime within local communities. It has three complementary components:

- Prevent and Deter – to stop people (overwhelmingly young people) engaging in offending behaviours and graduating into prolific offenders;
- Catch and Convict - actively tackling those who are already prolific offenders; and
- Rehabilitate and Resettle – working with identified prolific offenders to stop their offending by offering a range of supportive interventions. Offenders will be offered the opportunity for rehabilitation or face a very swift return to the courts.

The new strategy is CDRP led, with schemes set up to cover every CDRP in the country.

For further information about the Prolific and Other Priority Offenders Strategy please visit:  
[www.crimereduction.gov.uk/ppo.htm](http://www.crimereduction.gov.uk/ppo.htm)

**National Policing Plan 2005-08:** In November 2004, the Home Secretary launched the National Policing Plan for 2005-08. It contains five key priorities:

- To reduce overall crime – including violent and drug-related crime – in line with the Government's Public Service Agreements (PSAs);
- To provide a citizen-focused police service which responds to the needs of communities and individuals, especially victims and witnesses, and inspires public confidence in the police, particularly among minority ethnic communities.
- To take action with partners to increase sanction detection rates and target prolific and other priority offenders.
- To reduce people's concerns about crime, and anti-social behaviour and disorder.
- To combat serious and organised crime, within and across force boundaries.

For further information about the National Policing Strategy 2005-08 please visit:  
[www.policereform.gov.uk/docs/national\\_policing\\_plan.pdf](http://www.policereform.gov.uk/docs/national_policing_plan.pdf)

**The Domestic Violence, Crime and Victims Act 2004:** The plans in the Domestic Violence, Crime and Victims Act, will strengthen the rights of victims and witnesses, ensuring they receive the help, support and protection they need. They build on the Government's ongoing reform of the criminal justice system, rebalancing the process in favour of victims and witnesses.

Further information about the Domestic Violence, Crime and Victims Act is available at:  
[www.crimereduction.gov.uk/legislation37.htm](http://www.crimereduction.gov.uk/legislation37.htm)

**PSA Targets:** Following the Government's 2004 spending review there are three main PSA targets that are of particular significance to the CDRP. These are:

- PSA 1 – Reduce crime by 15% and further in high crime areas, by 2007-08
- PSA 2 – Reassure the public, reducing the fear of crime and anti-social behaviour, and building confidence in the Criminal Justice System (CJS) without compromising fairness
- PSA 4 – Reduce the harm caused by illegal drugs including substantially increasing the number of drug misusing offenders entering treatment through the CJS.

These complement the Police Authority Best Value Performance Indicators (BVPI) targets, the Local Authority BVPI targets and Local Area Agreements.

Further information about Government PSA targets is available at:  
[www.treasury.gov.uk/spending\\_review/spend\\_sr04/psa/spend\\_sr04\\_psaindex.cfm](http://www.treasury.gov.uk/spending_review/spend_sr04/psa/spend_sr04_psaindex.cfm)

Further information about Government BVPI targets is available at:  
[www.odpm.gov.uk/stellent/groups/odpm\\_localgov/documents/downloadable/odpm\\_locgov\\_029580.pdf](http://www.odpm.gov.uk/stellent/groups/odpm_localgov/documents/downloadable/odpm_locgov_029580.pdf)

**National Drug Strategy:** Aiming to reduce the harm that drugs cause to society - communities, individuals and their families - the Drug Strategy has four main elements: -

- Young people - preventing today's young people from becoming tomorrow's problematic drug users;
- Reducing supply - reducing the supply of illegal drugs.
- Communities - reducing drug-related crime and its impact on communities;
- Treatment and harm minimisation - reducing drug use and drug-related offending through treatment and support. Reducing drug-related death through harm minimisation.

For further information about the National Drug Strategy visit: [www.drugs.gov.uk/NationalStrategy](http://www.drugs.gov.uk/NationalStrategy)

**National Drug Strategy Performance Management Framework (NDSPMF):** The National Drug Strategy has a new Performance Management Resource Pack, which embeds key performance indicators for the 4 themes of the National Drug Strategy into the performance management frameworks of relevant government departments.

This framework will be used to measure the Partnership's performance when tackling drug and alcohol misuse.

Further information about the NDSPMF is available at:  
[www.drugs.gov.uk/ReportsandPublications/NationalStrategy/1075717576/78168-COI-Drugs.pdf](http://www.drugs.gov.uk/ReportsandPublications/NationalStrategy/1075717576/78168-COI-Drugs.pdf)

**Every Child Matters:** 'The Every Child Matters' Green Paper was published for consultation in September 2003. In March 2004, the Government published Every child matters: next steps. The new Children Act 2004 provides the legal framework for the programme of reform. Every Child Matters: Change for Children published in December 2004, brings together all the ways the Government are working towards improved outcomes for children, young people and families into a national framework for 150 local-authority-led change programmes.

Better outcomes depend on the integration of universal services with targeted and more specialized help, and on bringing services together around the needs of the child and family.

Further information about 'Every Child Matters' is available at: [www.everychildmatters.gov.uk](http://www.everychildmatters.gov.uk)

**Alcohol Harm Reduction Strategy for England:** This strategy was introduced by the Government in March 2004 to tackle the growing problem of alcohol abuse in England. It aims to co-ordinate the range of government interventions to prevent, minimize and manage alcohol related harms and to create a single more coherent national strategy. Most importantly, the strategy sets out a new cross-government approach that relies on creating a partnership at both national and local levels between government, the drink industry, local authorities, police and health authorities, and individuals and communities to address alcohol misuse.

Further information about the Alcohol Harm Reduction Strategy is available at: [www.strategy.gov.uk](http://www.strategy.gov.uk)

**Local Area Agreements:** These are the Government's arrangements to build a more flexible and responsive relationship between central government and a locality on the outcomes that need to be achieved at a local level. Central to those proposals is the formation of 'The Safer and Stronger Communities Fund' (SSCF). This merges several existing ODPM and Home Office funding streams that share a number of the closely related aims of this strategy.

For further information about Local Area Agreements and 'The Safer and Stronger Communities Fund' is available at: [www.odpm.gov.uk](http://www.odpm.gov.uk)

## SECTION 3 – AUDIT FINDINGS

### **The District – an overview**

Suffolk is one of the safest counties in the UK and the District of Waveney enjoys relatively low crime rates and a high quality of life.

Waveney is situated in the north east corner of Suffolk and covers an area of 143 square miles. It derives its name from the River Waveney that is the most southerly river of the Norfolk Broads and forms the district's northern boundary.

The District's population of approximately 113,370 (in 2002) includes fifty or more villages and five towns – Lowestoft, Beccles, Bungay, Halesworth and Southwold – which lie on the outer edges of the district leaving a sparsely populated rural area in the centre.

The area has suffered from a decline in its economic base causing high unemployment, low wages, low levels of aspiration and innovation and environmental dereliction. In some areas productivity is low by national standards. Waveney is a peripheral location and is not well served by road or rail, making it relatively unattractive for new or inward investment.

Lowestoft is the main town in Waveney with a population of around 60,000. It is the eastern cardinal point of Britain and is a gateway to the Norfolk and Suffolk Broads. Its elegant Victorian seafront and popular sandy beaches encourage a growing tourism industry.

## **Summary of the Audit Findings**

As previously stated, an audit of crime, disorder and drug misuse was carried out during the summer of 2004, analysing data collected from numerous agencies spanning the period April 2001 and March 2004. The following paragraphs summarise the key findings.

A postal survey carried out by Suffolk County Council in March 2004 showed that 60% of Waveney residents felt 'fairly safe' in the area where they lived, and 24% felt 'very safe'.

The annual cost of crime in Waveney for 2003/04 was estimated to be in the region of £29,974,140. These costs include lost or damaged property, time spent, emotional or physical impact, security, insurance premiums, and employer costs. Public sector costs account for about 30% of the overall total cost and include government crime prevention spending, criminal justice system costs, victim services and health services.

Overall, crime rates in Waveney are above the county average at 90.1 offences per 1000 population compared to 77.8 offences per 1000 population for Suffolk as a whole. Between April 2003 and March 2004, 10,117 offences were recorded by Suffolk Constabulary in the Waveney District Council area. Whilst these levels may appear high at first glance it should be remembered that patterns of offending vary greatly between urban and rural areas and it is therefore not always favourable to make direct comparisons between areas within a county.

For this reason, the Home Office compares areas from across England and Wales that have a similar socio-economic makeup. When comparing these areas for the period January—March 2004, Waveney had an offence rate per 1000 population for all crime that was slightly above average.

When compared to the other 376 CDRP areas across England and Wales, Waveney ranked 181<sup>st</sup> for rate and volume of BCS comparator recorded crime<sup>1</sup> during 2003-04.

---

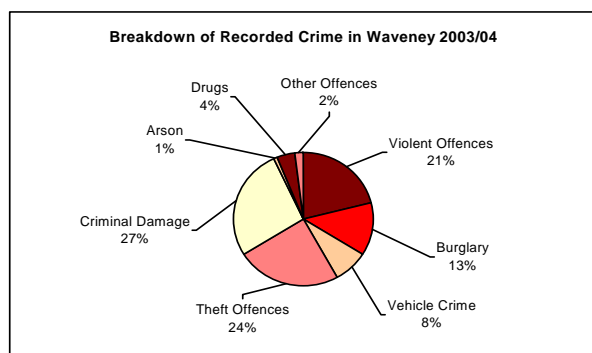
<sup>1</sup> A list of the BCS comparator crimes on which this ranking was calculated are attached at Appendix 1.

## Audit Summary Consultation Document

During the autumn of 2004, efforts were made to consult with the local community about the audit findings. A summary document was produced which highlighted the key issues identified by the audit and views were sought about the importance of these issues to local people and businesses. The following information formed the basis of this document.

Issues were identified which consultees were asked to rank in order of importance:

(Figures appearing in *italics* relate to the actual number of recorded offences.)



### **ARSON (114)**

The rate of arson in Waveney was equal to the county average of 1.0 offences per 1000 population. Two wards had rates over twice the county average: Harbour (3.0, 24), and Kirkley (2.6, 19).

### **BURGLARY (1290)**

#### **Of Peoples Homes:**

The 'dwelling burglary' rate for the district was 5.4 offences per 1000 population. The four wards with the highest rates were: Kirkley (13.6, 99), Harbour (12.4, 97), Gunton & Corton (10.2, 46) and Normanston (7.5, 54).

#### **Of Sheds, Garages and Other Buildings:**

There were 685 'other' burglaries in Waveney last year. These included sheds, garages, outbuildings, and business premises. The average offence rate for the district was 6.1 offences per 1000 population. Three wards had rates significantly higher than the district average: Kirkley (15.8, 115), Harbour (12.8, 100), and Beccles N (8.1, 38).

### **CRIMINAL DAMAGE (2691)**

During 2003-04, the average rate for criminal damage offences across the district was 24.0 offences per 1000 population. Four wards had rates over one and a half times higher than this average: Harbour (74.6, 582), Kirkley (60.8, 444), St Margaret's (45.8, 183), and Normanston (37.2, 268).

### **DISORDER (3466)**

Public disorder events tend to peak in line with periods of activity associated with the night time economy (e.g. pub/nightclub closing times). Unsurprisingly, most events are recorded during the evening and at weekends.

Within the disorder category the most commonly recorded incident in Waveney was 'Disturbance in a Public Place'. The district average for this type of incident was 13.7 offences per 1000 population.

Wards with higher than average rates were Kirkley (56.2, 410), Harbour (41.5, 324), St Margaret's (22.3, 89), and Normanston (18.2, 131).

### **DOMESTIC VIOLENCE (768)**

Of the total number of domestic violence incidents reported to Suffolk Police during 2003/2004, 16% were in Waveney. This equated to 768 incidents.

### **DRUGS (398)**

There were 398 drugs offences recorded in Waveney by Suffolk Police during 2003/2004. Of these offences 68 were classed as 'serious drugs offences' and the remaining 330 offences were recorded as 'other drug offences'.

Of the total drugs offences 119 were recorded in Harbour ward and 57 in Kirkley ward.

### **THEFT**

#### **Theft from Shops (534)**

Three wards had rates above the district average of 4.8 offences per 1000 population. These were Harbour (34.7, 271), Beccles N (14.6, 69), and Kirkley (7.5, 55).

#### **Cycle Theft (366)**

The average rate of cycle theft in the district is 3.3 offences per 1000 population. The following wards had rates in excess of one and a half times the district average: Kirkley (10.0, 73), Harbour (8.8, 69), and Whitton (5.3, 40).

#### **Other thefts & handling (1262)**

Two wards had rates of more than twice the district average of 11.2 offences per 1000 population. These were: Kirkley (32.0, 234) and Harbour (27.2, 212).

### **RACIAL HARASSMENT (80)**

There were 80 racist incidents recorded in Waveney during 2003/04. This equated to approximately 16% of all racist incidents countywide.

The 2001 Census showed that the proportion of people from black and minority ethnic groups living in Waveney was below the county rate (2.8%) at 1.2%.

A county breakdown of racist incidents for 2003/04 showed that 32% were harassment, 26% abuse, 22% assault, 10% criminal damage and 10% were other types of offences. The incident rate in Waveney has risen from 5.3 offences per 100,000

population in 1998/99 to 71.2 offences per 100,000 population in 2003/04.

The Suffolk Racial Harassment Initiative (RHI) encourages the reporting of incidents which may account for the significant increase in incidents over recent years.

**VEHICLE CRIME (830)**

**Theft of Motor Vehicle**

Last year in Waveney 240 vehicles were stolen. The district average was 2.1 offences per 1000 population. Wards with rates more than one and a half times higher than the average: Whitton (4.4, 33), Kirkley (4.1, 30), Harbour (3.6, 28), and Normanston (3.5, 25).

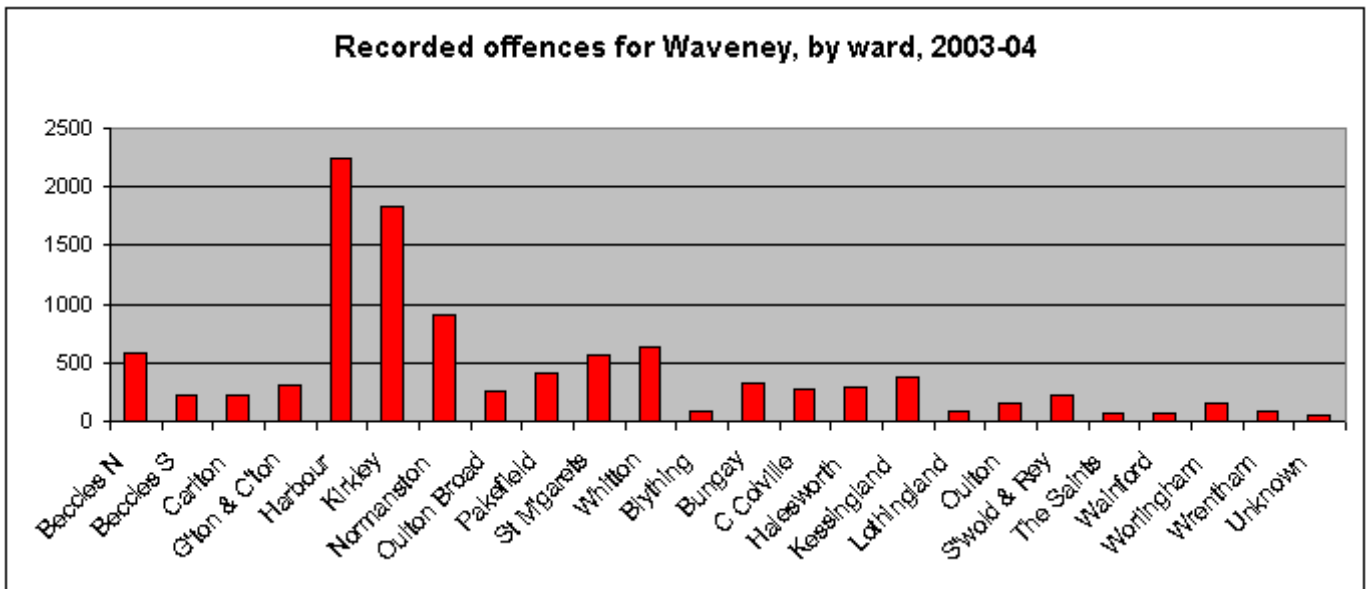
**Theft from Motor Vehicle**

During 2003/2004 there were 590 thefts from motor vehicles in Waveney. The average rate for 'thefts from motor vehicle' across the district was 5.3 offences per 1000 population. The wards in Waveney which had rates more than one and a half times the district average were: Harbour (12.3, 98), Kirkley (12.3, 90), and Normanston (9.4, 68).

**VIOLENT CRIME (2161)**

There were 2161 violent offences in Waveney last year. These included 50 robberies and 115 sexual offences.

The violent crime rate for the district was 19.2 offences per 1000 population. Three wards had rates more than one and a half times the district average: Kirkley (66.7, 487), Harbour (58.3, 455), and St Margaret's (35.8, 143).



*This graph shows the total number of crimes committed in Waveney District wards.*

**Consultation Feedback**

In October 2004, a joint consultation event was held at Leiston Abbey with Suffolk Coastal CDRP. 65 delegates were in attendance from local statutory and voluntary agencies.

When asked questions relating to national crime levels, the criminal justice system and victimisation, the majority of respondents answered correctly, showing a good understanding of the national picture.

55% of respondents stated that they felt 'very safe' in the area where they lived, and 38% felt 'fairly safe'. In areas where there are CCTV cameras 32% felt 'very safe' and 51% felt 'fairly safe'. 71% felt that Suffolk, as a whole, was 'very safe'.

48% had been the victim of crime or anti-social behaviour in the past 12 months, but only 27% had reported the incident to the Police.

Although crime has fallen slightly over the past year, 41% thought that it had risen slightly.

Most respondents stated that they received information about crime and disorder via newspapers, published statistics, and the radio/television.

73% of respondents were 'very concerned' (34%) or 'fairly concerned' (39%) about drug and alcohol abuse in the area where they lived. Substances of greatest concern were alcohol (64%) and cocaine/crack (21%). 89% of attendees had witnessed drunkenness, alcohol-related disorder or under-age drinking in their area.

90% of attendees believed that there would be value in the Partnership holding regular public consultation events, with 50% requesting annual events and 40% six-monthly consultation events.

### **Audit Summary Consultation Questionnaire findings:**

During the autumn 2004, approximately 500 questionnaires were circulated to local community groups, statutory and voluntary agencies to gain their views and perceptions about crime and disorder in Waveney.

A total of 89 questionnaires were returned.

When asked about crime and disorder priorities, respondents were most concerned about Burglary of Peoples Homes, Violent Offences, Public Disorder/Nuisance (non-criminal) and drug offences.

Fewer respondents were concerned about burglary of other buildings, arson, and racial harassment.

32% of respondents stated that they felt 'very safe' in the area where they lived and 54% said they felt 'fairly safe'.

In areas where there are CCTV cameras 26% stated that they felt 'very safe' and 61% stated that they felt 'fairly safe'.

80% of respondents felt that, as a whole, Waveney was a 'very safe' or 'fairly safe' place.

When asked to list types of behaviour that they considered to be anti-social, key findings were:

*Drunkenness and associated anti-social behaviour and crime e.g. swearing, noise and vandalism.  
Abusive language/threatening behaviour.  
Criminal damage and graffiti.*

37% of respondents had been the victim of crime or anti-social behaviour in the past 12 months, with 63% of these incidents being reported to the police.

73% of respondents felt that drug misuse is a concern in the area where they live. Alcohol was the main substance of concern (37%) followed by cannabis (23%). 78% of respondents had seen signs of drug/alcohol misuse in their area. Most commonly described behaviour was underage drinking (31%) followed by drunkenness (30%).

There was a wide age range of respondents, with 85% falling into the 36 to 75 years categories. 52% of respondents were male, 48% were female.

All respondents were White – British.

## Young People Consultation – Millennium Volunteers

During the summer of 2004, a survey was produced by Millennium Volunteers in Suffolk, in partnership with The Lowestoft Journal and Waveney District YMCA, which predominantly asked young people about their views on education, leisure and employment opportunities in their area.

The issue of bullying was raised and 89% of respondents stated that they had been bullied at school. There was a strong feeling that bullying should be a criminal offence and 75% felt that the police should deal with it. A full copy of the survey findings can be obtained from the Community Safety Officer at Waveney District Council.

## **SECTION 4 – THE PRIORITIES**

### Strategic Aims:

The Partnership has agreed four aims for the Strategy. These have been developed in line with the ODPM/Home Office publication: The Safer and Stronger Communities Fund Implementation Guidance, and the National Drug Strategy Performance Management Framework, published by the Home Office.

- 1. To reduce British Crime Survey (BCS) comparator recorded crime by 18.5%<sup>2</sup> by 2008.**
- 2. To reduce the number of recorded incidents of anti-social behaviour by 5% by 2008 across Suffolk<sup>3</sup>.**
- 3. To reduce the harm that drugs and alcohol cause to communities<sup>4</sup>.**
- 4. To reduce the number of deliberate fires by 10%, by 2010<sup>5</sup>.**

### Priority Development

The Waveney Crime and Disorder and Drug Misuse Reduction Strategy 2005-08 focus on a number of specific priorities. Broad issues were selected using the evidence provided in the local audit; the public then had the opportunity to comment on these and express their views and concerns. This information was then considered by the Partnership alongside the national priorities emerging from central government.

The Partnership has chosen to tackle the strategic priorities by adopting a layered approach. This will help to ensure that priorities that are shared by some or all of the other four Partnerships across the county are approached in a 'joined up' and cost effective manner, avoiding duplication of effort and resources. Shared priorities will be co-ordinated and led by a named agency or initiative at a county level. This will enable the Partnership to focus a greater amount of time and funding on the key local priorities identified by the audit and consultation.

The key local priorities will be a combination of the BCS comparator crimes, against which Strategic Aim 1 will be measured, and issues of local importance which have been identified by the audit and consultation process. Target priority areas will be selected at the beginning of each financial year and specific Annual Key Performance Indicators (AKPIs) will be set, against which the CDRP's

<sup>2</sup> The Home Office has allocated British Crime Survey comparator crime categories against which this % target will be measured. These are listed in Appendix 1.

<sup>3</sup> Local Public Service Agreement 2 (2005-08)

<sup>4</sup> This is a national aim taken from the National Drug Strategy.

<sup>5</sup> This target has been adapted from the Fire and Rescue Service PSA Target and is taken from page 64 of the ODPM document '*The Fire and Rescue National Framework*'. It comes into effect from April 2005. This target will outlive this strategy document and progress towards this target will therefore be reported to the end of March 2008.

performance will be measured and reported. Local targets will be reviewed annually and will be available via Suffolk County Council Research and Information Team.

### **Drug and Alcohol Misuse:**

The Police Reform Act 2002 extended the statutory duty on 'responsible authorities' to include drug and alcohol within their Crime and Disorder Reduction Strategy. Many unitary authorities chose to merge their Drug and Alcohol Action Team and CDRP, however, in many two-tier authorities, including Suffolk this was not felt to be practical. Instead a plan was put in place to ensure closer working and integration but the DAAT and CDRPs remain separate bodies.

The National Drug Strategy Performance Management Framework (NDSPMF) published by the Home Office in December 2003 outlines specific performance management measures and key performance indicators for measuring the success of the Partnership's strategy for tackling drug misuse. This document also placed a statutory duty on the Drug and Alcohol Action Team to publish an overarching countywide Drugs Strategy in April 2005.

Following a multi-agency seminar in September 2004, it was decided that to avoid duplication and to ensure effectiveness of interventions the Partnership would concentrate its efforts on delivering part of the 'community element' of the four key themes from the National Drug Strategy, whilst the Suffolk Drug and Alcohol Harm Reduction Strategy 2005-08 would focus on the other three themes (Reducing Supply, Treatment and Harm Reduction and Young People).

Whilst community awareness raising will be the main priority for the Partnership, other local priorities that have been identified by the Substance Misuse Worker will be explored and, if appropriate, developed further during the action planning stage.

## **SECTION 5 – ACTION PLANNING**

### **The Action Planning Process**

Specific objectives for priority areas will be detailed in implementation plans which will be developed during the spring of 2005. Further analysis will be undertaken on the priority areas identified to ensure that resources are allocated to targeted activities which will help the Partnership to achieve their stated aims. This process will be repeated at the beginning of each financial year for the duration of the strategy.

Each action plan will show which of the four strategic aims the plan has been designed to address, the specific objective of the activity including SMART targets, and the baseline position prior to any activity taking place.

The Safer and Stronger Communities Fund funding plans, completed on an annual basis by the Partnership, will be used as a template for the action plans.

## **SECTION 6 – PERFORMANCE MANAGEMENT**

### **Performance Management**

The Partnership recognises the importance of ensuring that effective performance management processes are in place to enable successful monitoring and evaluation of the strategy and associated projects.

Progress made in addressing the four high level strategic aims will be measured, where possible, using iQuanta data published by the Home Office<sup>6</sup>. For the alcohol related violent crime objective, Suffolk Constabulary data will be used to measure performance.

The Annual Key Performance Indicators will be monitored by the Research and Information Team at Suffolk County Council on behalf of the Partnership. Quarterly reports will be made available to the RAG and GO-East.

### **Monitoring and Evaluation**

Monitoring and evaluation criteria will be built into the action plan at the project development stage, and agreed by the RAG prior to any funding commitment. Where possible, baseline data will be used to enable progress to be measured. In instances where baseline data is not available, it is expected that Lead Officers for the project will detail alternative appropriate performance measures to enable effective monitoring.

The Lead Officer for the project will have responsibility for feeding back progress against project targets to the RAG on a quarterly basis. These reports will also be made available to GO-East as required. Monitoring will continue for an agreed period following cessation of the project and a final evaluation report will be prepared at the end of this period. This will enable the effect of the project's withdrawal to be measured and inform planning for follow-up action to be taken if required.

Government guidance does not require small scale, short-term, or low cost projects to carry out a formal evaluation of their actions. The cost would outweigh the benefits. However, in instances where the project is particularly innovative or likely to produce robust findings which can be shared with a wider audience, a full evaluation may be required. In these instances, the RAG would make a decision about the level of monitoring and feedback required.

Projects requesting funding in excess of £10,000 will be required to produce a detailed monitoring and evaluation plan to ensure that the project is outcome driven.

### **Reporting Progress against Drug and Alcohol Misuse**

There is a formal requirement to feedback progress made against drug and alcohol misuse targets to GO-East in a specific format outlined in the Performance Management Framework of the National Drug Strategy. Therefore, to avoid duplication of effort and resources the Partnership will adopt their performance management system for reporting progress in this priority area.

### **Annual Reports**

Formal reports will be prepared at the end of each financial year to inform GO-East about strategic progress. Additionally, press releases and newsletters will be produced at this time to update the local community about project activity and progress towards achieving the strategic targets.

This strategy was produced by H J Hurworth Limited, a community safety consultancy based in the Eastern Region, in consultation with local CDRP representatives. For further information about H J Hurworth Limited, e-mail: [helen.hurworth@tesco.net](mailto:helen.hurworth@tesco.net) or telephone 07990 634263.

<sup>6</sup> iQuanta is a Home Office police performance analysis tool. It produces a range of charts to illustrate current performance at force, BCU and CDRP level. The analysis gives an impression of how particular units compare with their peers, shows up significant change in performance, and tracks progress towards targets. Measurements are analyzed by placing units of Most Similar Families (MSF). Presently families are in groups of 15. Data is produced one month in arrears and provides data ranging across a three month period.

## Appendix 1 – Recorded Crime BCS Comparators

<b>BCS category</b>	<b>Code</b>	<b>Individual offences included</b>
Vehicle thefts	37.2 48 45 126	<i>Aggravated vehicle taking</i> <i>Theft and unauthorised taking of motor vehicle</i> <i>Theft from a vehicle</i> <i>Vehicle interference and tampering</i>
Burglary	28 29	<i>Burglary in a dwelling</i> <i>Aggravated burglary in a dwelling</i>
Bicycle theft	44	<i>Theft or unauthorised taking of pedal cycle</i>
Theft from person	39	<i>Theft from the person of another</i>
Vandalism (Criminal damage)	56 58A 58B 58C 58D 58E 58F  58G 58H	<i>Arson</i> <i>Criminal damage to a dwelling</i> <i>Criminal damage to building other than a dwelling</i> <i>Criminal damage to a vehicle</i> <i>Other criminal damage</i> <i>Racially/religiously aggravated criminal damage to a dwelling</i> <i>Racially/religiously aggravated criminal damage to a building other than a dwelling</i>  <i>Racially/religiously aggravated criminal damage to a vehicle</i> <i>Racially/religiously aggravated other criminal damage</i>
Common assault	104 105A 105B	<i>Assault on a constable</i> <i>Common Assault</i> <i>Racially/religiously aggravated common assault</i>
Wounding	5 8A 8D	<i>Wounding or other act endangering life</i> <i>Other (less serious) wounding</i> <i>Racially/religiously aggravated other wounding</i>
Robbery	34B	<i>Robbery of personal property</i>

## **Appendix 2 - ABBREVIATIONS USED IN THE STRATEGY**

ASBO	Anti Social Behaviour
AKPI	Annual Key Performance Indicator
BCS	British Crime Survey
BVI	Best Value Indicator
BVPI	Best Value Performance Indicator
CCTV	Closed Circuit Television
CDRP	Crime and Disorder Reduction Partnership
CJS	Criminal Justice System
CSU	Community Safety Unit
DAAT	Drug and Alcohol Action Team
GO EAST	Government Office for the East of England
IQUANTA	Home Office Police Performance Analysis Tool
LAA	Local Area Agreements
LSP	Local Strategic Partnership
MSF	Most Similar Families
NDSPMF	National Drug Strategy Performance Management Framework
ODPM	Office of the Deputy Prime Minister
OWG	Officer Working Group
PC	Police Constable
PCT	Primary Care Trust
PPO	Prolific and Other Priority Offender
PSA	Public Service Agreement
RAG	Responsible Authority Group
RHI	Racial Harassment Initiative
SMART (Acronym)	Specific, Measurable, Achievable, Realistic, Timebound
SSCF	Safer and Stronger Communities Fund



**SUFFOLK**  
POLICE AUTHORITY



NATIONAL PROBATION SERVICE  
for England and Wales  
*Suffolk*



GOVERNMENT OFFICE  
FOR THE EAST OF ENGLAND



Karen Hubbard  
Community Safety Officer  
Waveney District Council  
Town Hall  
High Street  
Lowestoft  
Suffolk  
NR32 1HS  
Tel: 01502 523182  
E-Mail: [karen.hubbard@waveney.gov.uk](mailto:karen.hubbard@waveney.gov.uk)

