



# Target Monitoring and Performance Report

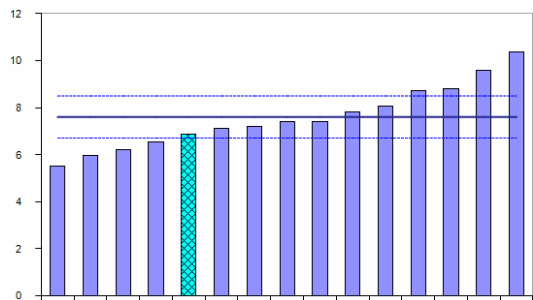
## Babergh CSP

2007 - 2008

BRITISH CRIME SURVEY COMPARATOR OFFENCES

Objective	Baseline	2006/07 & effect on target	Quarter 1 Apr-Jun 07-08	Quarter 2 July-Sept 07-08	6 months Apr-Sept 07-08	Quarter 3 Oct-Dec 07-08	9 months Apr-Dec 07-08	Quarter 4 Jan-Mar 07-08	Full year Apr-Mar 07-08
Reduce BCS offences by 13.5% (376 offences) by March 2008 to 2405 compared to baseline.	2781 offences 2003-04	<b>2006/07:</b> <b>2691</b> offences 10.6% reduction (286 offences) now to be achieved in 1 year.	Qtrly target <b>602</b> <b>689</b> offences <b>87</b> ↑ target <b>51</b> ↓ qtr1 06-07	Qtrly target <b>601</b> <b>717</b> offences <b>116</b> ↑ target <b>36</b> ↑ qtr2 06-07	6mth target <b>1203</b> <b>1406</b> offences <b>203</b> ↑ target <b>15</b> ↓ 6mth 06-07	Qtrly target <b>601</b> <b>569</b> offences <b>32</b> ↓ target <b>69</b> ↓ qtr3 06-07	9mth target <b>1804</b> <b>1975</b> offences <b>171</b> ↑ target <b>84</b> ↓ 9mth 06-07	Qtrly target <b>601</b> <b>596</b> offences <b>5</b> ↓ target <b>36</b> ↓ qtr4 06-07	Year target <b>2405</b> <b>2571</b> offences <b>166</b> ↑ target <b>120</b> ↓ 12mth 06-07

BCS Comparator: January – March 2008

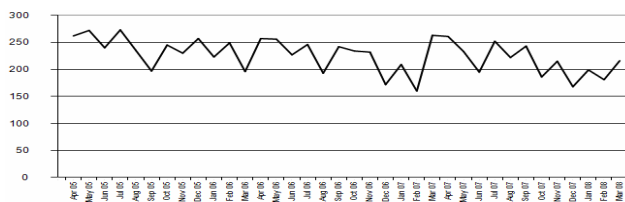


The rate of BCS comparator offences in Babergh has risen from 6.6 to 6.8 crimes per 1000 residents, fifth lowest in the group and below the Most Similar Family average.

BCS Comparator: October 2005 – March 2008



BCS Comparator: April 2005 – March 2008



RELATED INFORMATION:

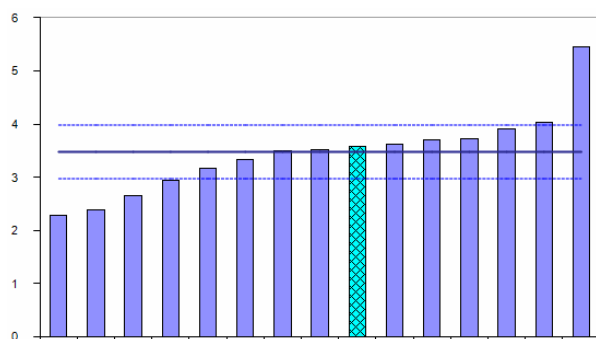
- ❑ PSA1 ACHIEVEMENT: Babergh CDRP has achieved a reduction in BCS Comparator Crime of 8% over the 3 year period April 2005 – March 2008
- ❑ Peer comparison shows that Babergh has a lower BCS Comparator crime rate than is the average within its MSF.

— Actuals Trends Based on Last: — 3 data points — 6 data points — 12 data points — MSF - - - Target

CRIMINAL DAMAGE AND ARSON

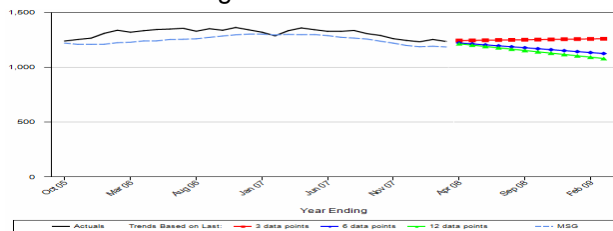
Objective	Baseline	2006/07 & effect on target	Quarter 1 Apr-Jun 07-08	Quarter 2 July-Sept 07-08	6 months Apr-Sept 07-08	Quarter 3 Oct-Dec 07-08	9 months Apr-Dec 07-08	Quarter 4 Jan-Mar 07-08	Full year Apr-Mar 07-08
Reduce criminal damage by <b>10%</b> ( <b>125 offences</b> ) by March 2008 to <b>1123</b> compared to baseline.	<b>1248</b> offences 2003-04	<b>2006/07: 1332 offences</b> 15.7% reduction (209 offences) now to be achieved in 1 year.	Qtrly target <b>281</b> <b>341</b> offences <b>60</b> ↑ target <b>5</b> ↓ qtr1 06-07	Qtrly target <b>281</b> <b>303</b> offences <b>22</b> ↑ target <b>20</b> ↓ qtr2 06-07	6mth target <b>562</b> <b>644</b> offences <b>82</b> ↑ target <b>25</b> ↓ 6mth 06-07	Qtrly target <b>281</b> <b>279</b> offences <b>2</b> ↓ target <b>22</b> <b>63</b> ↓ qtr3 06-07	9mth target <b>843</b> <b>923</b> offences <b>80</b> ↑ target <b>88</b> ↓ 9 mth 06-07	Qtrly target <b>280</b> <b>310</b> offences <b>20</b> ↑ target <b>9</b> ↓ qtr4 06-07	Year target <b>1123</b> <b>2571</b> offences <b>166</b> ↑ target <b>120</b> ↓ 12mth 06-07
Reduce deliberate fires by <b>10%</b> ( <b>71 fires</b> ) across Suffolk by 2010 to <b>634</b> . Property+ vehicle fires (excl. derelict vehicles)	<b>705</b> deliberate fires 2001-02 (ODPM baseline)	<b>2006/07: 515 deliberate fires</b> 0% reduction (0 fires) now to be achieved in 1 year.	Qtrly target <b>159</b> <b>135</b> offences <b>24</b> ↓ target <b>5</b> ↑ qtr1 06-07	Qtrly target <b>159</b> <b>126</b> offences <b>33</b> ↓ target <b>31</b> ↓ qtr2 06-07	6mth target <b>318</b> <b>261</b> offences <b>57</b> ↓ target <b>26</b> ↓ 6mth 06-07	Qtrly target <b>158</b> <b>115</b> offences <b>43</b> ↓ target <b>9</b> ↑ qtr3 06-07	9mth target <b>476</b> <b>376</b> offences <b>100</b> ↓ target <b>17</b> ↓ 9mth 06-07	Qtrly target <b>158</b> <b>96</b> offences <b>62</b> ↓ target <b>26</b> ↓ qtr4 06-07	Year target <b>634</b> <b>472</b> offences <b>162</b> ↓ target <b>43</b> ↓ 12mth 06-07

Criminal Damage: January – March 2008

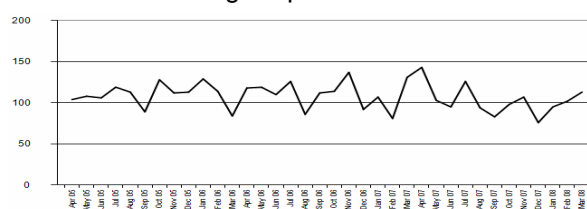


The rate of criminal damage in Babergh has risen to 3.5 crimes per 1000 residents, and is now just above the Most Similar Family average rate of 3.4.

Criminal Damage: October 2005 – March 2008



Criminal Damage: April 2005 – March 2008



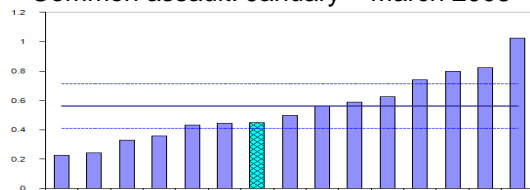
RELATED INFORMATION:

- ❑ PSA1 ACHIEVEMENT: Babergh CDRP has achieved a reduction in Criminal Damage of 1% over the 3 year period April 2005 – March 2008.
- ❑ Peer comparison shows that Babergh has a slightly higher Criminal Damage crime rate than is the average within the MSF.

VIOLENT CRIME: COMMON ASSAULT & WOUNDINGS

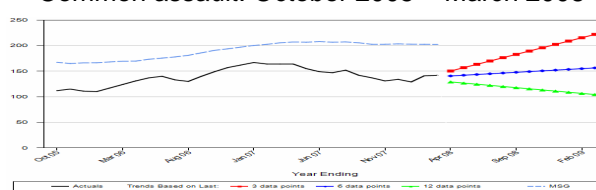
Objective	Baseline	2006/07 & effect on target	Quarter 1 Apr-Jun 07-08	Quarter 2 July-Sept 07-08	6 months Apr-Sept 07-08	Quarter 3 Oct-Dec 07-08	9 months Apr-Dec 07-08	Quarter 4 Jan-Mar 07-08	Full year Apr-Mar 07-08
Reduce common assault by <b>35%</b> ( <b>72 offences</b> ) by March 2008 to <b>133</b> compared to baseline.	<b>205</b> offences 2003-04	<b>2006/07: 164</b> offences <b>18.9%</b> reduction (31 offences) now to be achieved in 1 year.	Qtrly target <b>33</b> <b>36</b> offences <b>3</b> ↑ target <b>15</b> ↓ qtr1 06-07	Qtrly target <b>33</b> <b>29</b> offences <b>4</b> ↓ target <b>7</b> ↓ qtr2 06-07	6mth target <b>66</b> <b>65</b> offences <b>1</b> ↓ target <b>22</b> ↓ 6mth 06-07	Qtrly target <b>33</b> <b>38</b> offences <b>5</b> ↑ target <b>8</b> ↓ qtr3 06-07	9mth target <b>99</b> <b>103</b> offences <b>4</b> ↑ target <b>30</b> ↓ 9 mth 06-07	Qtrly target <b>34</b> <b>39</b> offences <b>5</b> ↑ target <b>22</b> ↓ qtr4 06-07	Year target <b>133</b> <b>142</b> offences <b>9</b> ↑ target <b>22</b> ↓ 12mth 06-07
Reduce woundings by <b>2%</b> ( <b>7 offences</b> ) by March 2008 to <b>319</b> compared to baseline.	<b>325</b> offences 2003-04	<b>2006/07: 358</b> offences <b>10.9%</b> reduction (39 offences) now to be achieved in 1 year.	Qtrly target <b>80</b> <b>61</b> offences <b>19</b> ↓ target <b>38</b> ↓ qtr1 06-07	Qtrly target <b>80</b> <b>91</b> offences <b>11</b> ↑ target <b>18</b> ↓ qtr2 06-07	6mth target <b>160</b> <b>152</b> offences <b>8</b> ↓ target <b>56</b> ↓ 6mth 06-07	Qtrly target <b>80</b> <b>77</b> offences <b>3</b> ↓ target <b>14</b> ↓ qtr3 06-07	9mth target <b>240</b> <b>229</b> offences <b>11</b> ↓ target <b>52</b> ↓ 9mth 06-07	Qtrly target <b>79</b> <b>75</b> offences <b>4</b> ↓ target <b>2</b> ↓ qtr4 06-07	Year target <b>319</b> <b>304</b> offences <b>15</b> ↓ target <b>54</b> ↓ 12mth 06-07

Common assault: January – March 2008



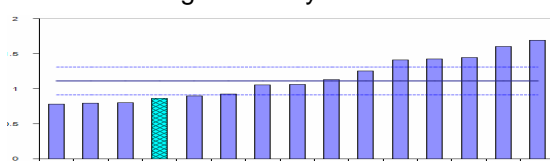
The rate of common assault in Babergh, at 0.45 crimes per 1000 residents, has risen from fifth to seventh lowest in the Most Similar Family group, but remains below the group average of 0.56.

Common assault: October 2005 – March 2008

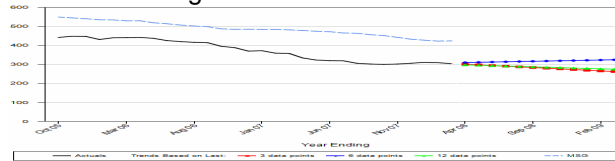


The rate of woundings in Babergh remains below the Most Similar Family group average, and is now third lowest in the group.

Woundings: January – March 2008



Woundings: October 2005 – March 2008



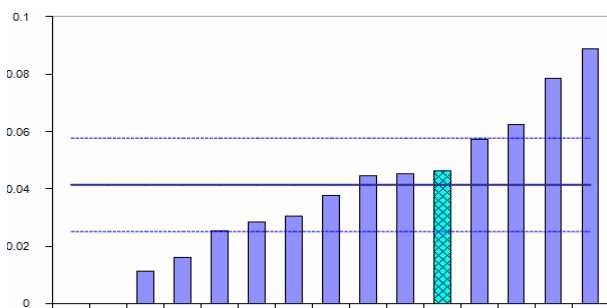
RELATED INFORMATION:

- ❑ PSA1 ACHIEVEMENT: Babergh CDRP has achieved a reduction in Wounding of 6% over the 3 year period April 2005 – March 2008. Common Assault has been reduced by 31% in the same period.
- ❑ Peer performance comparisons show that in Babergh the Common Assault rate is below the MSF average and Woundings are significantly lower than the MSF average.

VIOLENT CRIME: ROBBERY OF PERSONAL PROPERTY & VIOLENCE IN A PUBLIC PLACE RELATED TO ALCOHOL

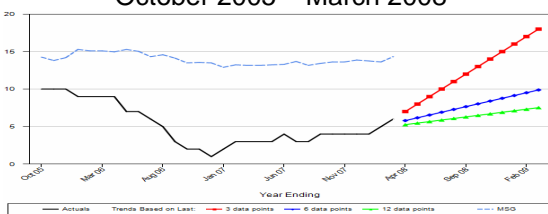
Objective	Baseline	2006/07 & effect on target	Quarter 1 Apr-Jun 07-08	Quarter 2 July-Sept 07-08	6 months Apr-Sept 07-08	Quarter 3 Oct-Dec 07-08	9 months Apr-Dec 07-08	Quarter 4 Jan-Mar 07-08	Full year Apr-Mar 07-08
Reduce robbery of personal property by 0% by March 2008 to 7 compared to baseline.	7 offences 2003-04	<b>2006/07: 3 offences</b> 0% reduction (0 offences) now to be achieved in 1 year.	Qtrly target 2 1 offences 1 ↓ target 1 ↑ qtr1 06-07	Qtrly target 2 1 offences 1 ↓ target same as qtr2 06-07	6mth target 4 2 offences 2 ↓ target 1 ↑ 6mth 06-07	Qtrly target 2 0 offences 2 ↓ target 1 ↓ qtr3 06-07	9mth target 6 2 offences 4 ↓ target 1 ↑ 6mth 06-07	Qtrly target 1 4 offences 3 ↑ target 2 ↑ qtr4 06-07	Year target 7 6 offences 1 ↓ target 3 ↑ 12mth 06-07
Reduce VIAPP related to alcohol by 10% (288 offences) across Suffolk by March 2008 to 2592 compared to baseline.	2880 offences 2004-05	<b>2006/07: 3562 offences</b> 27.2% reduction (970 offences) now to be achieved in 1 year.	Qtrly target 609 887 offences 278 ↑ target 38 ↑ qtr1 06-07	Qtrly target 687 1086 offences 399 ↑ target 6 ↓ qtr2 06-07	6mth target 1296 1973 offences 677 ↑ target 32 ↑ 6 mth 06-07	Qtrly target 736 837 offences 101 ↑ target 125 ↓ qtr3 06-07	9mth target 2032 2810 offences 778 ↑ target 93 ↓ 9mth 06-07	Qtrly target 560 943 offences 383 ↑ target 284 ↑ qtr4 06-07	Year target 2592 3753 offences 1161 ↑ target 191 ↑ 12mth 06-07

Robbery of personal property: January – March 2008

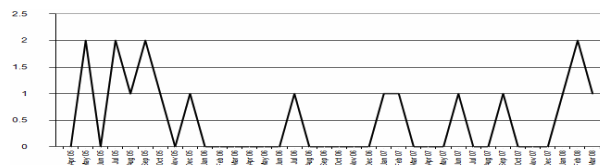


Babergh had 4 personal robbery offences in the last quarter, and so appears just above the Most Similar Family group average, which is 0.04 offences per 1000 residents.

Robbery of personal property: October 2005 – March 2008



Robbery of personal property: April 2005 – March 2008



RELATED INFORMATION:

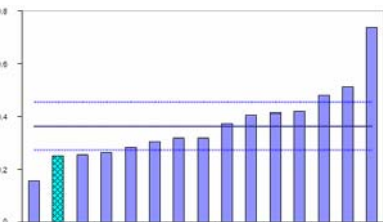
- ❑ VIAPP (Violence In A Public Place) related to alcohol has been consistently over target in Suffolk since April 2005. It has been noted that performance against this target may be affected by the issuing of Fixed Penalty Notices by the Police, in the enforcement on more minor disorder offences early in the evening, to negate more serious offending later in the evening.
- ❑ PSA1 ACHIEVEMENT: Babergh CDRP has achieved a reduction in Personal Robbery of 14% over the 3 year period April 2005 – March 2008.
- ❑ Robbery of Personal Property is slightly above the average for the MSF – however only 4 offences have occurred in the last 3 months.

VEHICLE CRIME

Objective	Baseline	2006/07 & effect on target	Quarter 1 Apr-Jun 07-08	Quarter 2 July-Sept 07-08	6 months Apr-Sept 07-08	Quarter 3 Oct-Dec 07-08	9 months Apr-Dec 07-08	Quarter 4 Jan-Mar 07-08	Full year Apr-Mar 07-08
Reduce theft of a motor vehicle by 30% (43 offences) by March 2008 to 99 compared to baseline.	142 offences 2003-04	<b>2006/07: 118 offences</b> 16.1% reduction (19 offences) now to be achieved in 1 year.	Qtrly target 25 26 offences 1 ↑ target 13 ↓ qtr1 06-07	Qtrly target 25 35 offences 10 ↑ target 10 ↑ qtr2 06-07	6mth target 50 61 offences 11 ↑ target 3 ↓ 6mth 06-07	Qtrly target 25 29 offences 4 ↑ target 10 ↑ qtr3 06-07	9mth target 75 90 offences 15 ↑ target 7 ↑ 9 mth 06-07	Qtrly target 24 22 offences 2 ↓ target 13 ↓ qtr4 06-07	Year target 99 112 offences 11 ↑ target 6 ↓ 12mth 06-07
Reduce theft from motor vehicle by 15% (72 offences) by March 2008 to 410 compared to baseline.	482 offences 2004-05	<b>2006/07: 410 offences</b> 0% reduction (0 offences) now to be achieved in 1 year.	Qtrly target 103 141 offences 38 ↑ target 37 ↑ qtr1 06-07	Qtrly target 102 176 offences 74 ↑ target 72 ↑ qtr2 06-07	6mth target 205 317 offences 112 ↑ target 109 ↑ 6mth 06-07	Qtrly target 103 77 offences 26 ↓ target 29 ↓ qtr2 06-07	9mth target 308 394 offences 86 ↑ target 80 ↑ 9 mth 06-07	Qtrly target 102 91 offences 11 ↓ target 5 ↓ qtr4 06-07	Year target 410 485 offences 75 ↑ target 75 ↑ 12mth 06-07
Reduce vehicle interference by 35% (41 offences) by March 2008 to 76 compared to baseline.	117 offences 2004-05	<b>2006/07: 80 offences</b> 5.0% reduction (4 offences) now to be achieved in 1 year.	Qtrly target 19 15 offences 4 ↓ target 16 ↓ qtr1 06-07	Qtrly target 19 13 offences 6 ↓ target 7 ↓ qtr2 06-07	6mth target 38 28 offences 10 ↓ target 23 ↓ 6mth 06-07	Qtrly target 19 12 offences 7 ↓ target 7 ↓ qtr3 06-07	9mth target 57 40 offences 17 ↓ target 30 ↓ 9 mth 06-07	Qtrly target 19 10 offences 9 ↓ target same as qtr4 06-07	Year target 76 50 offences 26 ↓ target 30 ↓ 12mth 06-07

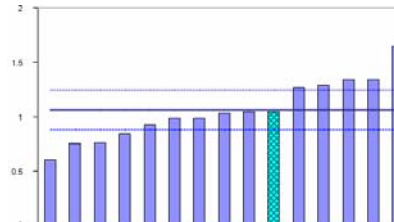
Theft of motor vehicle: January – March 2008

The rate of theft of motor vehicle in Babergh, at 0.25 crimes per 1000 residents, has fallen from middle to second lowest in the Most Similar Family, well below the average rate of 0.0.36.



Theft from motor vehicle: October - December 2007

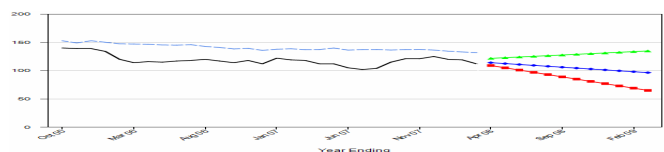
The rate of theft from motor vehicle in Babergh, at 1.05 crimes per 1000 residents, has risen from middle to sixth highest in the Family, and is now just below the group average of 1.06.



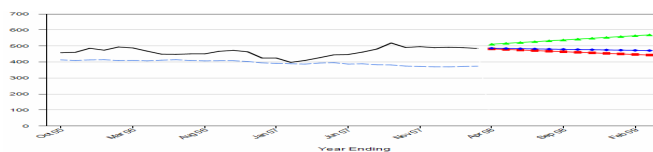
RELATED INFORMATION:

- PSA1 ACHIEVEMENT: Babergh CDRP has achieved a reduction in Theft Of Motor Vehicle of 21% over the 3 year period April 2005 – March 2008. Theft From Vehicles has risen by 1% in the same period, although Vehicle Interference has been reduced by 57%.
- Peer comparison shows offending in Babergh is below the MSF average.

Theft of motor vehicle: October 2005 – March 2008



Theft from motor vehicle: October 2005 – March 2008

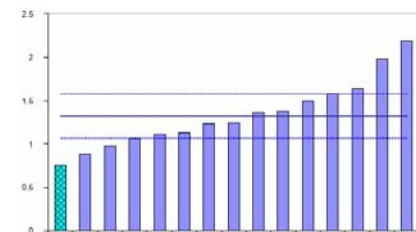


DOMESTIC BURGLARY, THEFT OF CYCLE & THEFT FROM THE PERSON

Objective	Baseline	2006/07 & effect on target	Quarter 1 Apr-Jun 07-08	Quarter 2 July-Sept 07-08	6 months Apr-Sept 07-08	Quarter 3 Oct-Dec 07-08	9 months Apr-Dec 07-08	Quarter 4 Jan-Mar 07-08	Full year Apr-Mar 07-08
Reduce domestic burglary by 10% (15 offences) by March 2008 to 139 compared to baseline.	154 offences 2003-04	<b>2006/07: 121 offences</b> 0% reduction (0 offences) now to be achieved in 1 year.	Qtrly target 35 32 offences 3 ↓ target 2 ↓ qtr1 06-07	Qtrly target 35 43 offences 8 ↑ target 6 ↑ qtr2 06-07	6mth target 70 75 offences 5 ↑ target 4 ↑ 6mth 06-07	Qtrly target 35 33 offences 2 ↓ target 10 ↓ qtr3 06-07	9mth target 105 108 offences 3 ↑ target 23 ↑ 9mth 06-07	Qtrly target 34 27 offences 7 ↓ target 9 ↓ qtr4 06-07	Year target 139 135 offences 4 ↓ target 14 ↑ 12mth 06-07
Reduce theft of a cycle by 2% (1 offence) by March 2008 to 62 compared to baseline.	63 offences 2004-05	<b>2006/07: 57 offences</b> 0% reduction (0 offences) now to be achieved in 1 year.	Qtrly target 16 21 offences 5 ↑ target same as qtr1 06-07	Qtrly target 15 21 offences 6 ↑ target 10 ↑ qtr2 06-07	6mth target 31 42 offences 11 ↑ target 10 ↑ 6mth 06-07	Qtrly target 16 8 offences 8 ↓ target 4 ↓ qtr3 06-07	9mth target 47 50 offences 3 ↑ target 6 ↑ 9mth 06-07	Qtrly target 15 8 offences 5 ↓ target 9 ↓ qtr4 06-07	Year target 62 58 offences 4 ↓ target 1 ↑ 12mth 06-07
Reduce theft from the person by 0% by March 2008 to 38 compared to baseline.	38 offences 2004-05	<b>2006/07: 48 offences</b> 20.8% reduction (10 offences) now to be achieved in 1 year.	Qtrly target 10 15 offences 5 ↑ target same as qtr1 06-07	Qtrly target 9 5 offences 4 ↓ target 10 ↓ qtr2 06-07	6mth target 19 20 offences 1 ↑ target 10 ↓ 6mth 06-07	Qtrly target 10 16 offences 6 ↑ target 9 ↑ qtr3 06-07	9mth target 29 36 offences 7 ↑ target 1 ↓ qtr3 06-07	Qtrly target 9 10 offences 1 ↑ target 1 ↓ qtr4 06-07	Year target 38 46 offences 8 ↑ target 2 ↓ 12mth 06-07

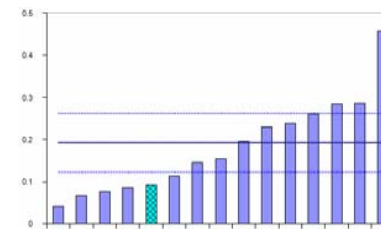
Domestic burglary: January – March 2008

Babergh has fallen from fourth to the lowest in the Most Similar Family, with a rate of 0.75 offences per 1000 residents, significantly below the Family average of 1.3.



Theft of cycle: October - December 2007

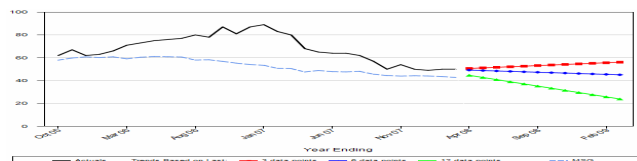
Theft of cycle in Babergh has risen from third to fourth lowest in the Most Similar Family, with a rate of 0.09 crimes per 1000 residents, significantly below the Family average 0.19.



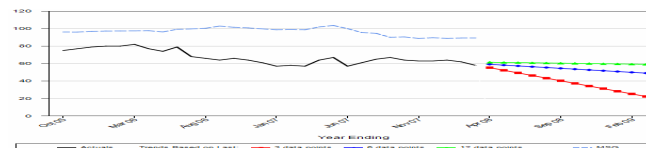
RELATED INFORMATION:

- ❑ PSA1 ACHIEVEMENT: Babergh CDRP has achieved a reduction in Theft Of Pedal Cycles of 8% over the 3 year period April 2005 – March 2008.
- ❑ Peer comparison shows that Babergh has the lowest Domestic Burglary rate in the MSF. Theft of Pedal Cycle is also significantly below the MSF average.

Domestic burglary: October 2005 – March 2008



Theft of cycle: October 2005 – March 2008



ANTI-SOCIAL BEHAVIOUR

Objective	Baseline	Basket of indicators	Quarter 1 Apr-Jun 07-08	Quarter 2 July-Sept 07-08	6 months Apr-Sept 07-08	Quarter 3 Oct-Dec 07-08	9 months Apr-Dec 07-08	Quarter 4 Jan-Mar 07-08	Full year Apr-Mar 07-08
Reduce ASB by 5% by March 2008	x incidents 2005-06	Reduce noise nuisance (domestic) by 5% (x incidents) by March 2008 to x compared to baseline.	Qtrly target x 87 incidents XX ↑ or ↓ target	Qtrly target x 116 incidents XX ↑ or ↓ target	6mth target x 203 incidents XX ↑ or ↓ target	Qtrly target x 73 incidents XX ↑ or ↓ target	9mth target x 276 incidents XX ↑ or ↓ target	Qtrly target x	Year target x
Reduce ASB by 5% by March 2008	8 incidents 2005-06	Reduce graffiti by 5% (7 incidents) by March 2008 to x compared to baseline.	Qtrly target 2 4 incidents 2 ↑ target	Qtrly target 2 1 incidents 1 ↑ target	6mth target 4 5 incidents 1 ↑ target	Qtrly target 2 2 incidents same as target	9mth target 6 7 incidents 1 ↑ target	Qtrly target 1	Year target 7
Reduce ASB by 5% by March 2008	140 incidents (vehicles removed) 2005-06	Reduce abandoned vehicles by 5% (7 incidents) by March 2008 to 133 compared to baseline.	Qtrly target 34 81 incidents 47 ↑ target	Qtrly target 33 89 incidents 56 ↑ target	6mth target 67 170 incidents 103 ↑ target	Qtrly target 33 64 incidents 31 ↑ target	9mth target 100 234 incidents 134 ↑ target	Qtrly target 33	Year target 133
Reduce ASB by 5% by March 2008	342 incidents 2005-06	Reduce fly tipping by 5% (17 incidents) by March 2008 to 325 compared to baseline.	Qtrly target 81 118 incidents 37 ↑ target	Qtrly target 81 89 incidents 8 ↑ target	6mth target 162 207 incidents 45 ↑ target	Qtrly target 81 88 incidents 7 ↑ target	9mth target 243 295 incidents 52 ↑ target	Qtrly target 82	Year target 325
Reduce the number of people who perceive ASB as a problem to 3% by March 2008	9.3% BCS Dec 2004	Sept 2006: 10.3% 7.3% pts reduction now to be achieved in 1 year.	7.9% March 2007	6.9% June 2007	6.4% September 2007				

BABERGH 2007-08. BCS target % reduction: 13.5%

DOMESTIC VIOLENCE, RACIAL HARASSMENT, SECTION 17 & DAAT

Objective	Baseline	2006/07 & effect on target	Quarter 1 Apr-Jun 07-08	Quarter 2 July-Sept 07-08	Quarter 3 Oct-Dec 07-08	Quarter 4 Jan-Mar 07-08
Reduce the rate of repeat domestic violence offending by 5% by March 2008 to 36.0% across the county	37.9% 2004-05	<b>2006-07: 41.0%</b> Means 5%pt reduction now to be achieved in 1 year.	Qtrly target 39.0% 39.9% of incidents 0.9% pts ↑ target	Qtrly target 38.0% 27.6% of incidents 10.4% pts ↓ target	Qtrly target 37.0% 29.3% of incidents 7.7% pts ↓ target	Qtrly target 36.0% 27.1% of incidents 8.9% pts ↓ target
Reduce the proportion of domestic violence incidents reported to the Police where alcohol was a factor by 10% by March 2008 to 38.3% across the county  (DV alc project worker in post 09/06)	42.6% 2004-05	<b>2006-07: 43.3%</b> Means 5%pt reduction now to be achieved in 1 year.	Qtrly target 40.5% 39.9% of incidents 0.6% pts ↓ target	Qtrly target 39.8% 41.1% of incidents 1.3% pts ↑ target	Qtrly target 38.8% 43.6% of incidents 4.8% pts ↑ target	Qtrly target 38.3% 35.2% of incidents 3.1% pts ↓ target
The number of racial harassment incidents reported to the Racial Harassment Initiative in Babergh		<b>2006-07: 20 incidents</b>	3 Incidents	12 Incidents	8 Incidents	
Increase awareness of the responsibilities under Section 17 to take account of community safety in all local authority work						
Reduce the proportion of BCS respondents who perceive that people using or dealing drugs are a very or fairly big problem in their local area to 15% across the county by March 2008	17.5% March 2005	<b>Sept 2006: 13.9%</b> On target	14.3% March 2007	13.3% June 2007	15.4% September 2007	15.7% December 2008
Increase drug and alcohol awareness/education in the local community to 29 events by March 2007.	21 events 2003-04	<b>2006-07: 17 events</b> Means 12 more events must be hosted before March 2008	5 Events	2 Events	7 Events	7 Events

BABERGH 2007-08. BCS target % reduction: 13.5%

Objective	Baseline March 2006		Snapshot for Ipswich PPO area for June 2007:		Snapshot for Ipswich PPO area for Sept 2007:		Snapshot for Ipswich PPO area for Dec 2007:		Snapshot for Ipswich PPO area for March 2008:	
To maintain an effective Prolific and other Priority Offenders Scheme.	A	3	A	5	A	6	A	8	A	
	B	0	B	0	B	0	B	1	B	
	C	3	C	2	C	2	C	1	C	
	D	8	D	5	D	2	D	1	D	
	E	29	E	16	E	11	E	12	E	
	F	1	F	0	F	0	F	0	F	
	G1	16	G1	22	G1	20	G1	21	G1	
	G2	4	G2	1	G2	2	G2	1	G2	
	Total	64	Total	51	Total	43	Total	45	Total	

Ipswich PPO area covers Ipswich and Babergh CSP areas

Key to the position of PPOs on the PPO journey:

KEY FROM DECEMBER 2005	
A	At liberty and subject only to basic monitoring
B	At liberty and subject to a voluntary rehabilitative intervention
C	At liberty and subject to proactive targeting by the police
D	In the criminal justice system (arrest to sentence)
E	Under active supervision in the community
F	Subject to enforcement proceedings
G1	In custody - sentence
G2	In custody - remand

**Force Overview Report - Suffolk and CDRPs**  
**Crimes**  
**Data To The End Of Mar 08**

Force/CDRP	All Crime	BCS Comparator	Domestic Burglary	Vehicle Crime (exc Veh Interference)	Robbery	Violent Crime
Suffolk						
Babergh						
Forest Heath						
Ipswich						
Mid Suffolk						
St Edmundsbury						
Suffolk Coastal						
Waveney						

**Key to Performance Comparisons**

<b>Across Time - Shape</b>		<b>Against Peers - Ladder</b>	
Clearly Improving	Improving	Better than	
No apparent change		In line with peers	
Clearly Deteriorating	Deteriorating	Worse than	
<b>Based on Significant Change</b>		<b>Based on last 3 months</b>	
Click on the ladder to view corresponding charts			