



# Target Monitoring and Performance Report

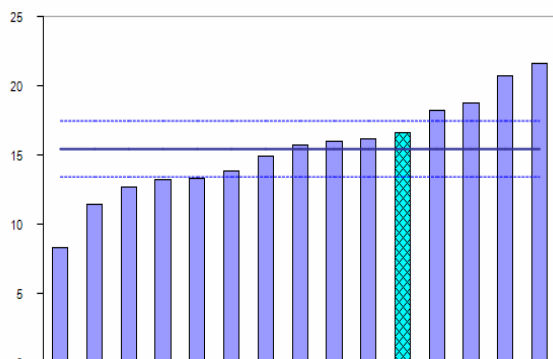
Ipswich CSP

2007 - 2008

BRITISH CRIME SURVEY COMPARATOR OFFENCES

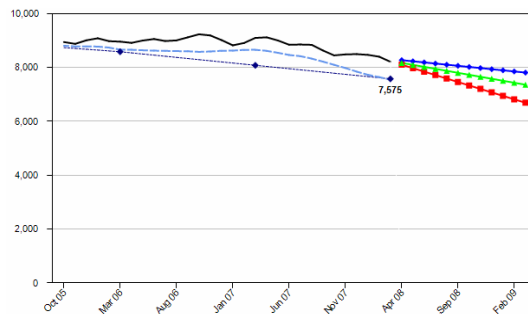
Objective	Baseline	2006/07 & effect on target	Quarter 1 Apr-Jun 07-08	Quarter 2 July-Sept 07-08	6 months Apr-Sept 07-08	Quarter 3 Oct-Dec 07-08	9 months Apr-Dec 07-08	Quarter 4 Jan-Mar 07-08	Full year Apr-Mar 07-08
Reduce BCS offences by 21.0% (2018 offences) by March 2008 to 7570 compared to baseline.	9588 offences 2003-04	2006/07: 9095 offences 16.8% reduction (1525 offences) now to be achieved in 1 year.	Qtrly target 1893 2295 offences 402 ↑ target 253 ↓ qtr1 06-07	Qtrly target 1892 1997 offences 105 ↑ target 213 ↓ qtr2 06-07	6mth target 3785 4292 offences 507 ↑ target 466 ↓ 6mth 06-07	Qtrly target 1893 1908 offences 15 ↑ target 136 ↓ qtr3 06-07	9mth target 5678 6200 offences 522 ↑ target 602 ↓ 9mth 06-07	Qtrly target 1892 2008 offences 116 ↑ target 285 ↓ qtr4 06-07	Year target 7570 8208 offences 638 ↑ target 887 ↓ 12mth 06-07

BCS Comparator: January – March 2008

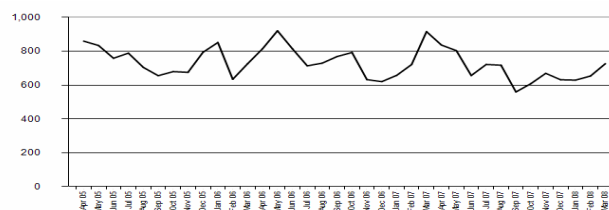


BCS comparator offences in Ipswich have risen from sixth to fifth highest in the Most Similar Family, with a rate of 16.7, above the Family average of 15.5.

BCS Comparator: October 2005 – March 2008



BCS Comparator: April 2005 – January 2008



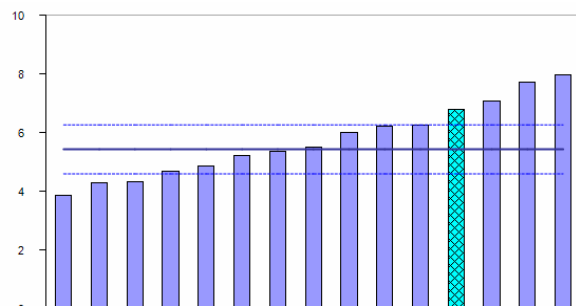
RELATED INFORMATION:

PSA1 ACHIEVEMENT: Ipswich CSP has achieved a reduction in BCS Comparator Crime of 14% over the 3 year period April 2005 – March 2008

CRIMINAL DAMAGE AND ARSON

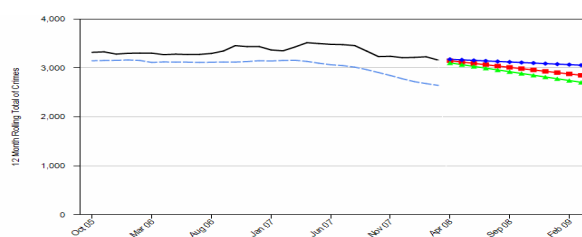
Objective	Baseline	2006/07 & effect on target	Quarter 1 Apr-Jun 07-08	Quarter 2 July-Sept 07-08	6 months Apr-Sept 07-08	Quarter 3 Oct-Dec 07-08	9 months Apr-Dec 07-08	Quarter 4 Jan-Mar 07-08	Full year Apr-Mar 07-08
Reduce criminal damage by <b>19.5% (671 offences)</b> by March 2008 to <b>2772</b> compared to baseline.	<b>3443</b> offences 2003-04	<b>2006/07: 3428</b> offences <b>19.1%</b> reduction (656 offences) now to be achieved in 1 year.	Qtrly target <b>693</b> <b>954</b> offences <b>261</b> ↑ target <b>55</b> ↑ qtr1 06-07	Qtrly target <b>693</b> <b>678</b> offences <b>15</b> ↓ target <b>137</b> ↓ qtr2 06-07	6mth target <b>1386</b> <b>1632</b> offences <b>246</b> ↑ target <b>82</b> ↓ 6mth 06-07	Qtrly target <b>693</b> <b>709</b> offences <b>16</b> ↑ target <b>16</b> ↓ qtr3 06-07	9mth target <b>2079</b> <b>2341</b> offences <b>262</b> ↑ target <b>98</b> ↓ 9mth 06-07	Qtrly target <b>693</b> <b>820</b> offences <b>127</b> ↑ target <b>49</b> ↓ qtr4 06-07	Year target <b>2772</b> <b>3161</b> offences <b>389</b> ↑ target <b>264</b> ↓ 12mth 06-07
Reduce deliberate fires by <b>10% (71 fires)</b> across Suffolk by 2010 to <b>634</b> . Property+ vehicle fires (excl. derelict vehicles)	<b>705</b> deliberate fires 2001-02 (ODPM baseline)	<b>2006/07: 515</b> deliberate fires <b>0%</b> reduction (0 fires) now to be achieved in 1 year.	Qtrly target <b>159</b> <b>135</b> offences <b>24</b> ↓ target <b>5</b> ↑ qtr1 06-07	Qtrly target <b>159</b> <b>126</b> offences <b>33</b> ↓ target <b>31</b> ↓ qtr2 06-07	6mth target <b>318</b> <b>261</b> offences <b>57</b> ↓ target <b>26</b> ↓ qtr1 06-07	Qtrly target <b>1388</b> <b>1261</b> offences <b>457</b> ↓ target <b>926</b> qtr1 06-07	9mth target <b>476</b> <b>376</b> offences <b>100</b> ↓ target <b>17</b> ↓ 9mth 06-07	Qtrly target <b>158</b> <b>96</b> offences <b>62</b> ↓ target <b>26</b> ↓ qtr4 06-07	Year target <b>634</b> <b>472</b> offences <b>162</b> ↓ target <b>43</b> ↓ 12mth 06-07

Criminal Damage: January – March 2008

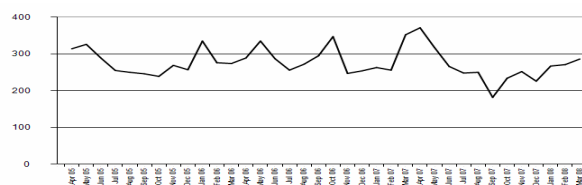


Ipswich has risen from fifth to fourth highest in the Most Similar Family with a rate of 6.8 crimes per 1000 residents, which is now significantly above the Family average.

Criminal Damage: October 2005 – March 2008



Criminal Damage: April 2005 – March 2008



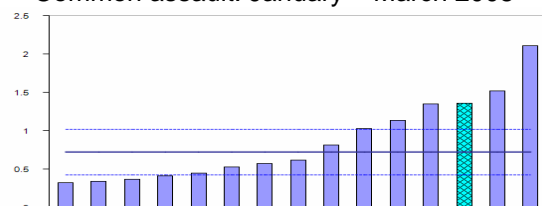
RELATED INFORMATION:

PSA1 ACHIEVEMENT: Ipswich CSP has achieved a of 8% reduction in Criminal Damage over the 3 year period April 2005 – March 2008

**VIOLENT CRIME: COMMON ASSAULT & WOUNDINGS**

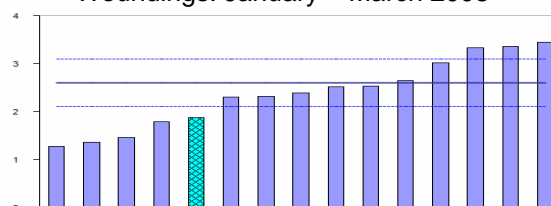
Objective	Baseline	2006/07 & effect on target	Quarter 1 Apr-Jun 07-08	Quarter 2 July-Sept 07-08	6 months Apr-Sept 07-08	Quarter 3 Oct-Dec 07-08	9 months Apr-Dec 07-08	Quarter 4 Jan-Mar 07-08	Full year Apr-Mar 07-08
Reduce common assault by <b>34%</b> ( <b>222 offences</b> ) by March 2008 to <b>430</b> compared to baseline.	<b>652</b> offences 2003-04	<b>2006/07: 567</b> offences <b>24.2%</b> reduction ( <b>137 offences</b> ) now to be achieved in 1 year.	Qtrly target <b>108</b> <b>160</b> offences <b>52</b> ↑ target <b>4</b> ↓ qtr1 06-07	Qtrly target <b>107</b> <b>161</b> offences <b>54</b> ↑ target <b>27</b> ↑ qtr2 06-07	6mth target <b>215</b> <b>321</b> offences <b>106</b> ↑ target <b>23</b> ↑ 6mth 06-07	Qtrly target <b>108</b> <b>152</b> offences <b>44</b> ↑ target <b>17</b> ↑ qtr3 06-07	9mth target <b>323</b> <b>473</b> offences <b>150</b> ↑ target <b>40</b> ↑ 9mth 06-07	Qtrly target <b>107</b> <b>164</b> offences <b>57</b> ↑ target <b>30</b> ↑ qtr4 06-07	Year target <b>430</b> <b>673</b> offences <b>243</b> ↑ target <b>70</b> ↑ 12 mth 06-07
Reduce woundings by <b>2%</b> ( <b>26 offences</b> ) by March 2008 to <b>1258</b> compared to baseline.	<b>1284</b> offences 2003-04	<b>2006/07: 1347</b> offences <b>6.6%</b> reduction ( <b>89 offences</b> ) now to be achieved in 1 year.	Qtrly target <b>315</b> <b>284</b> offences <b>31</b> ↓ target <b>141</b> ↓ qtr1 06-07	Qtrly target <b>314</b> <b>314</b> offences <b>same as</b> target <b>57</b> ↓ qtr2 06-07	6mth target <b>629</b> <b>598</b> offences <b>31</b> ↓ target <b>198</b> ↓ 6mth 06-07	Qtrly target <b>315</b> <b>252</b> offences <b>63</b> ↓ target <b>45</b> ↓ qtr3 06-07	9mth target <b>944</b> <b>850</b> offences <b>94</b> ↓ target <b>243</b> ↓ 9mth 06-07	Qtrly target <b>314</b> <b>226</b> offences <b>88</b> ↓ target <b>28</b> ↓ qtr4 06-07	Year target <b>1258</b> <b>1076</b> offences <b>182</b> ↓ target <b>271</b> ↓ 12mth 06-07

Common assault: January – March 2008



The rate of common assault in Ipswich, at 1.4 crimes per 1000 residents, remains significantly above the Most Similar Family average, and has risen to third highest in the group.

Woundings: January – March 2008

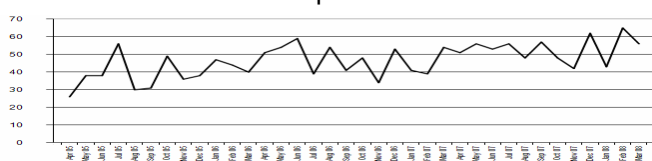


The rate of woundings in Ipswich, at 1.9 crimes per 1000 residents, is now significantly below the Most Similar Family average, and has fallen from seventh to fifth lowest in the group.

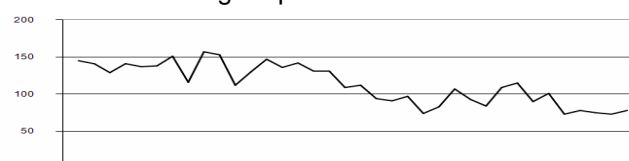
**RELATED INFORMATION:**

PSA1 ACHIEVEMENT: Ipswich CSP has achieved a reduction of 2% in Common Assault over the 3 year period April 2005 – March 2008. Wounding has reduced by 16% in the same period.

Common assault: April 2005 – March 2008



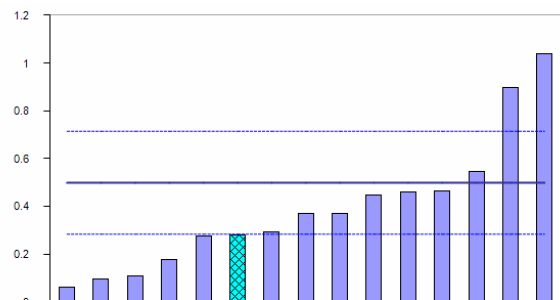
Woundings: April 2005 – March 2008



VIOLENT CRIME: ROBBERY OF PERSONAL PROPERTY & VIOLENCE IN A PUBLIC PLACE RELATED TO ALCOHOL

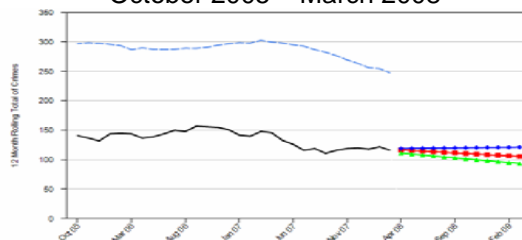
Objective	Baseline	2006/07 & effect on target	Quarter 1 Apr-Jun 07-08	Quarter 2 July-Sept 07-08	6 months Apr-Sept 07-08	Quarter 3 Oct-Dec 07-08	9 months Apr-Dec 07-08	Quarter 4 Jan-Mar 07-08	Full year Apr-Mar 07-08
Reduce robbery of personal property by 0% by March 2008 to 113 compared to baseline.	113 offences 2003-04	2006/07: 148 offences 23.6% reduction (35 offences) now to be achieved in 1 year.	Qtrly target 29 25 offences 4↓ target 22↓ qtr1 06-07	Qtrly target 28 26 offences 2↓ target 15↓ qtr2 06-07	6mth target 57 51 offences 6↓ target 37↓ 6mth 06-07	Qtrly target 28 31 offences 3↑ target 9↑ qtr3 06-07	9mth target 85 82 offences 3↓ target 28 9mth 06-07	Qtrly target 28 34 offences 6↑ target 4↓ qtr4 06-07	Year target 113 34 offences 6↑ target 32 12mth 06-07
Reduce VIAPP related to alcohol by 10% (288 offences) across Suffolk by March 2008 to 2592 compared to baseline.	2880 offences 2004-05	2006/07: 3562 offences 27.2% reduction (970 offences) now to be achieved in 1 year.	Qtrly target 609 887 offences 278↑ target 38↑ qtr1 06-07	Qtrly target 687 1086 offences 399↑ target 6↓ qtr2 06-07	6mth target 1296 1973 offences 677↑ target 32↑ 6 mth 06-07	Qtrly target 736 837 offences 101↑ target 125↓ qtr3 06-07	9mth target 2032 2810 offences 778↑ target 93↓ 9mth 06-07	Qtrly target 560 943 offences 383↑ target 284↑ qtr4 06-07	Year target 2592 3753 offences 1161↑ target 191↑ 12mth 06-07

Robbery of personal property: January – March 2008

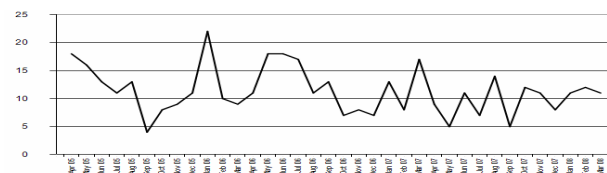


The rate of robbery of personal property in Ipswich, at 0.28 crimes per 1000 residents, remains significantly below the Most Similar Family average rate of 0.50, but has risen from fifth to sixth lowest in the group.

Robbery of personal property: October 2005 – March 2008



Robbery of personal property: April 2005 – March 2008



RELATED INFORMATION:

PSA1 ACHIEVEMENT: In Ipswich CSP Personal Robbery has increased by 3% over the 3-year period April 2005-March 2008.

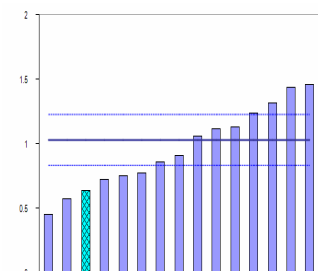
VIAPP (Violence In A Public Place) related to alcohol has been consistently over target in Suffolk since April 2005. It has been noted that performance against this target may be affected by the issuing of Fixed Penalty Notices by the Police, in the enforcement on more minor disorder offences early in the evening, to negate more serious offending later in the evening.

VEHICLE CRIME

Objective	Baseline	2006/07 & effect on target	Quarter 1 Apr-Jun 07-08	Quarter 2 July-Sept 07-08	6 months Apr-Sept 07-08	Quarter 3 Oct-Dec 07-08	9 months Apr-Dec 07-08	Quarter 4 Jan-Mar 07-08	Full year Apr-Mar 07-08
Reduce theft of a motor vehicle by <b>25% (127 offences)</b> by March 2008 to <b>382</b> compared to baseline.	<b>509</b> offences 2003-04	<b>2006/07: 561</b> offences <b>31.9%</b> reduction (179 offences) now to be achieved in 1 year.	Qtrly target <b>96</b> <b>161</b> offences <b>65</b> ↑ target <b>4</b> ↓ qtr1 06-07	Qtrly target <b>95</b> <b>142</b> offences <b>47</b> ↑ target <b>13</b> ↑ qtr2 06-07	6mth target <b>191</b> <b>303</b> offences <b>112</b> ↑ target <b>9</b> ↑ 6mth 06-07	Qtrly target <b>96</b> <b>136</b> offences <b>40</b> ↑ target <b>14</b> ↑ qtr3 06-07	9mth target <b>287</b> <b>439</b> offences <b>152</b> ↑ target <b>23</b> ↑ 9mth 06-07	Qtrly target <b>95</b> <b>77</b> offences <b>18</b> ↓ target <b>68</b> ↓ qtr4 06-07	Year target <b>382</b> <b>516</b> offences <b>134</b> ↑ target <b>45</b> ↓ 12mth 06-07
Reduce theft from motor vehicle by <b>35% (565 offences)</b> by March 2008 to <b>1050</b> compared to baseline.	<b>1615</b> offences 2004-05	<b>2006/07: 1252</b> offences <b>16.1%</b> reduction (202 offences) now to be achieved in 1 year.	Qtrly target <b>263</b> <b>274</b> offences <b>11</b> ↑ target <b>20</b> ↓ qtr1 06-07	Qtrly target <b>262</b> <b>244</b> offences <b>18</b> ↓ target <b>17</b> ↓ qtr2 06-07	6mth target <b>525</b> <b>518</b> offences <b>7</b> ↓ target <b>37</b> ↓ 6mth 06-07	Qtrly target <b>263</b> <b>209</b> offences <b>54</b> ↓ target <b>78</b> ↓ qtr3 06-07	9mth target <b>788</b> <b>727</b> offences <b>61</b> ↓ target <b>115</b> ↓ 9mth 06-07	Qtrly target <b>262</b> <b>343</b> offences <b>81</b> ↑ target <b>67</b> ↓ qtr4 06-07	Year target <b>1050</b> <b>1070</b> offences <b>20</b> ↑ target <b>182</b> ↓ 12mth 06-07
Reduce vehicle interference by <b>40% (167 offences)</b> by March 2008 to <b>251</b> compared to baseline.	<b>418</b> offences 2004-05	<b>2006/07: 320</b> offences <b>21.6%</b> reduction (69 offences) now to be achieved in 1 year.	Qtrly target <b>63</b> <b>114</b> offences <b>51</b> ↑ target <b>34</b> ↑ qtr1 06-07	Qtrly target <b>63</b> <b>89</b> offences <b>26</b> ↑ target <b>43</b> ↑ qtr2 06-07	6mth target <b>126</b> <b>203</b> offences <b>77</b> ↑ target <b>77</b> ↑ 6mth 06-07	Qtrly target <b>63</b> <b>64</b> offences <b>1</b> ↑ target <b>13</b> ↓ qtr3 06-07	9mth target <b>189</b> <b>267</b> offences <b>78</b> ↑ target <b>64</b> ↑ 9mth 06-07	Qtrly target <b>62</b> <b>64</b> offences <b>2</b> ↑ target <b>53</b> ↓ qtr4 06-07	Year target <b>251</b> <b>331</b> offences <b>80</b> ↑ target <b>11</b> ↑ 12mth 06-07

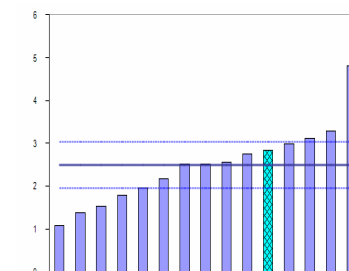
Theft of motor vehicle: January – March 2008

Theft of motor vehicle in Ipswich has fallen from third highest to third lowest in the Most Similar Family group, with a rate of 0.64, significantly below the Most Similar Family average rate of 1.0 crimes per 1000 residents.



Theft from motor vehicle: January – March 2008

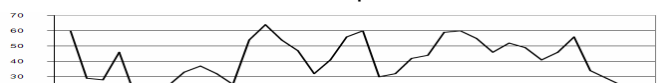
The rate of theft from motor vehicle in Ipswich has risen to 2.8 crimes per 1000 residents, and is now above the group average. Ipswich has risen from sixth lowest to fifth highest in the Most Similar Family Group.



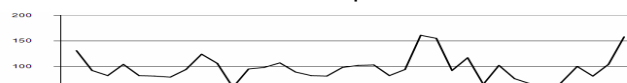
RELATED INFORMATION:

PSA1 ACHIEVEMENT: Ipswich CSP has achieved a 34% reduction in Theft From Motor Vehicle offences in the 3 year period Apr 2005 – March 2008. In the same period Vehicle Interference offences fell by 21%. Theft Of Motor Vehicles has increased 1% in the 3 year period.

Theft of motor vehicle: April 2005 – March 2008



Theft from motor vehicle: April 2005 – March 2008

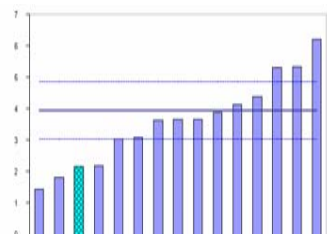


DOMESTIC BURGLARY, THEFT OF CYCLE & THEFT FROM THE PERSON

Objective	Baseline	2006/07 & effect on target	Quarter 1 Apr-Jun 07-08	Quarter 2 July-Sept 07-08	6 months Apr-Sept 07-08	Quarter 3 Oct-Dec 07-08	9 months Apr-Dec 07-08	Quarter 4 Jan-Mar 07-08	Full year Apr-Mar 07-08
Reduce domestic burglary by 25% (202 offences) by March 2008 to 605 compared to baseline.	807 offences 2003-04	2006/07: 592 offences 0% reduction (0 offences) now to be achieved in 1 year.	Qtrly target 152 110 offences 42 ↓ target 128 ↓ qtr1 06-07	Qtrly target 151 137 offences 14 ↓ target 8 ↓ qtr2 06-07	6mth target 303 247 offences 56 ↓ target 136 ↓ 6mth 06-07	Qtrly target 151 130 offences 21 ↓ target 48 ↑ qtr3 06-07	9mth target 454 377 offences 77 ↓ target 88 ↓ 9mth 06-07	Qtrly target 151 110 offences 41 ↓ target 17 ↓ qtr4 06-07	Year target 605 487 offences 118 ↓ target 105 ↓ 12mth 06-07
Reduce theft of a cycle by 5% (22 offences) by March 2008 to 412 compared to baseline.	434 offences 2004-05	2006/07: 585 offences 29.6% reduction (173 offences) now to be achieved in 1 year.	Qtrly target 103 138 offences 35 ↑ target 17 ↓ qtr1 06-07	Qtrly target 103 159 offences 56 ↑ target 41 ↓ qtr2 06-07	6mth target 206 297 offences 91 ↑ target 58 ↓ 6mth 06-07	Qtrly target 103 143 offences 40 ↑ target 27 ↑ qtr3 06-07	9mth target 309 440 offences 131 ↑ target 31 ↓ 9mth 06-07	Qtrly target 103 107 offences 4 ↑ target 7 ↓ qt4 06-07	Year target 412 547 offences 135 ↑ target 38 ↓ 12mth 06-07
Reduce theft from the person by 4% (13 offences) by March 2008 to 300 compared to baseline.	313 offences 2004-05	2006/07: 295 offences 0% reduction (0 offences) now to be achieved in 1 year.	Qtrly target 75 75 offences same as target 6 ↓ qtr1 06-07	Qtrly target 75 47 offences 28 ↓ target 21 ↓ qtr2 06-07	6mth target 150 122 offences 28 ↓ target 27 ↓ 6mth 06-07	Qtrly target 75 130 offences 55 ↑ target 27 ↓ qtr3 06-07	9mth target 225 252 offences 27 ↑ target 54 ↓ 9mth 06-07	Qtrly target 75 63 offences 12 ↓ target 22 ↓ qtr4 06-07	Year target 300 315 offences 15 ↑ target 28 ↓ 12mth 06-07

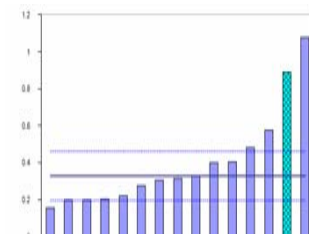
Domestic burglary: January – March 2008

The rate of domestic burglary in Ipswich has fallen further, to 2.2 crimes per 1000 residents, and is now third lowest in the Most Similar Family group, still significantly below the group average of 4.0.



Theft of cycle: January – March 2008

The rate of theft of cycle in Ipswich fell slightly to 0.89 crimes per 1000 residents, but remained well over twice the Most Similar Family average rate of 0.33, and second highest in the family group.

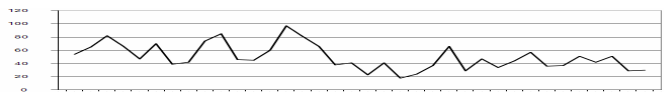


RELATED INFORMATION:

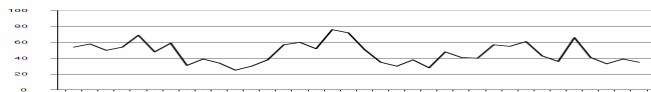
PSA1 ACHIEVEMENT: Ipswich CSP has achieved a 40% reduction in Domestic Burglary in the 3 year period April 2005 – March 2008.

Theft of Pedal Cycle offences have increased by 26% against the baseline year, but Theft From Person offences are down 15% over the 3 year period.

Domestic burglary: April 2005 – March 2008



Theft of cycle: April 2005 – March 2008



ANTI-SOCIAL BEHAVIOUR

Objective	Baseline	Basket of indicators	Quarter 1 Apr-Jun 07-08	Quarter 2 July-Sept 07-08	6 months Apr-Sept 07-08	Quarter 3 Oct-Dec 07-08	9 months Apr-Dec 07-08	Quarter 4 Jan-Mar 07-08	Full year Apr-Mar 07-08
Reduce ASB by 5% by March 2008	79 incidents 2005-06	Reduce graffiti by 5% (4 incidents) by March 2008 to 75 compared to baseline.	Qtrly target 19	Qtrly target 19	6mth target 38	Qtrly target 19	9mth target 57	Qtrly target 18	Year target 75
Reduce ASB by 5% by March 2008	1033 incidents 2005-06	Reduce abandoned vehicles by 5% (52 incidents) by March 2008 to 981 compared to baseline.	Qtrly target 246	Qtrly target 245	6mth target 491	Qtrly target 245	9mth target 736	Qtrly target 245	Year target 981
Reduce ASB by 5% by March 2008	x incidents 2005-06	Reduce noise nuisance by 5% (x incidents) by March 2008 to x compared to baseline.	Qtrly target x	Qtrly target x	6mth target x	Qtrly target x	9mth target x	Qtrly target x	Year target x
Reduce ASB by 5% by March 2008	x incidents 2005-06	Reduce soliciting/kerb crawling by 5% (x incidents) by March 2008 to x compared to baseline.	Qtrly target x	Qtrly target x	6mth target x	Qtrly target x	9mth target x	Qtrly target x	Year target x
Reduce the number of people who perceive ASB as a problem to 3% by March 2008	9.3% BCS Dec 2004	Sept 2006: 10.3% 7.3% pts reduction now to be achieved in 1 year.	7.9% March 2007	6.9% June 2007	6.4% September 2007		7.7% December 2007		

DOMESTIC VIOLENCE, RACIAL HARASSMENT, SECTION 17 & DAAT

Objective	Baseline	2006/07 & effect on target	Quarter 1 Apr-Jun 07-08	Quarter 2 July-Sept 07-08	Quarter 3 Oct-Dec 07-08	Quarter 4 Jan-Mar 07-08
Reduce the rate of repeat domestic violence offending by 5% by March 2008 to 36.0% across the county	37.9% 2004-05	<b>2006-07: 41.0%</b> Means 5%pt reduction now to be achieved in 1 year.	Qtrly target 39.0% <b>39.9%</b> of incidents <b>0.9% pts ↑ target</b>	Qtrly target 38.0% <b>27.6%</b> of incidents <b>10.4% pts ↓ target</b>	Qtrly target 37.0% <b>29.3%</b> of incidents <b>7.7% pts ↓ target</b>	Qtrly target 36.0% <b>27.1%</b> of incidents <b>8.9% pts ↓ target</b>
Reduce the proportion of domestic violence incidents reported to the Police where alcohol was a factor by 10% by March 2008 to 38.3% across the county  (DV alc project worker in post 09/06)	42.6% 2004-05	<b>2006-07: 43.3%</b> Means 5%pt reduction now to be achieved in 1 year.	Qtrly target 40.5% <b>39.9%</b> of incidents <b>0.6% pts ↓ target</b>	Qtrly target 39.8% <b>41.1%</b> of incidents <b>1.3% pts ↑ target</b>	Qtrly target 38.8% <b>43.6%</b> of incidents <b>4.8% pts ↑ target</b>	Qtrly target 38.3% <b>35.2%</b> of incidents <b>3.1% pts ↓ target</b>
The number of racial harassment incidents reported to the Racial Harassment Initiative in Ipswich		<b>2006-07: 153 incidents</b>	41 incidents	63 incidents	56 Incidents	
Increase awareness of the responsibilities under Section 17 to take account of community safety in all local authority work						
Reduce the proportion of BCS respondents who perceive that people using or dealing drugs are a very or fairly big problem in their local area to 15% across the county by March 2008	17.5% March 2005	<b>Sept 2006: 13.9%</b> On target	14.3% March 2007	13.3% June 2007	15.4% September 2007	15.7% December 2008
Increase drug and alcohol awareness/education in the local community to 44 events by March 2007.	34 events 2003-04	<b>2006-07: 21 events</b> Means 23 more events must be hosted before March 2008	1 Event (Educator in post June 2007)	12 Events	15 Events	4 Events

IPSWICH 2007-08. BCS target % reduction: 21.0%

Objective	Baseline March 2006		Snapshot for Ipswich PPO area for June 2007:		Snapshot for Ipswich PPO area for Sept 2007:		Snapshot for Ipswich PPO area for Dec 2007:		Snapshot for Ipswich PPO area for March 2008:	
	A	B	A	B	A	B	A	B	A	B
To maintain an effective Prolific and other Priority Offenders Scheme.	A	3	A	5	A	6	A	8	A	
	B	0	B	0	B	0	B	1	B	
	C	3	C	2	C	2	C	1	C	
	D	8	D	5	D	2	D	1	D	
	E	29	E	16	E	11	E	12	E	
	F	1	F	0	F	0	F	0	F	
	G1	16	G1	22	G1	20	G1	21	G1	
	G2	4	G2	1	G2	2	G2	1	G2	
	Total	64	Total	51	Total	43	Total	45	Total	

Ipswich PPO area covers Ipswich and Babergh CSP areas

Key to the position of PPOs on the PPO journey:

KEY FROM DECEMBER 2005	
A	At liberty and subject only to basic monitoring
B	At liberty and subject to a voluntary rehabilitative intervention
C	At liberty and subject to proactive targeting by the police
D	In the criminal justice system (arrest to sentence)
E	Under active supervision in the community
F	Subject to enforcement proceedings
G1	In custody - sentence
G2	In custody - remand

Force Overview Report - Suffolk and CDRPs  
Crimes  
Data To The End Of Mar 08

Force/CDRP	All Crime	BCS Comparator	Domestic Burglary	Vehicle Crime (exc Veh Interference)	Robbery	Violent Crime
Suffolk						
Babergh						
Forest Heath						
Ipswich						
Mid Suffolk						
St Edmundsbury						
Suffolk Coastal						
Waveney						

**Key to Performance Comparisons**

**Across Time - Shape**

- Clearly Improving
- Improving
- No apparent change
- Clearly Deteriorating
- Deteriorating

**Based on Significant Change**

**Against Peers - Ladder**

- Better than
- In line with peers
- Worse than

**Based on last 3 months**

Click on the ladder to view corresponding charts