



Suffolk children and Young People's Plan

2006-09

Summary

Welcome to the summary version of

Suffolk's first Children and Young People's Plan

This is the summary version of Suffolk's Children and Young People's Plan.

Suffolk's Children and Young People's Plan is a very special document. It is a shared vision of key priorities that will improve outcomes for children and young people, and support for parents and carers over the next three years.

The ambitions set out in the plan have been agreed by all the agencies responsible for providing services to children and young people in Suffolk: our Children's Trust Partnership. In addition, the priorities have been informed by children, young people, parents and carers in Suffolk.

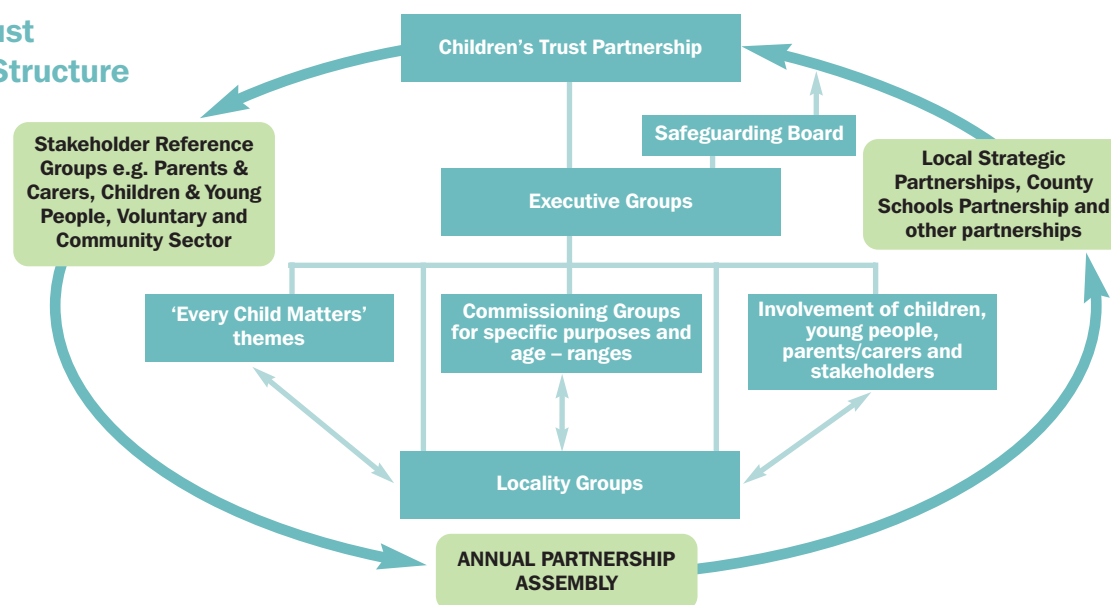
Our vision for children and young people

Our vision is to enable all children and young people in Suffolk to aspire to, and achieve their full potential, giving them the basis for a successful life as active members of their community. We will:

- aim for every child and young person in Suffolk to achieve their aspirations, to be healthy and safe, to contribute successfully to their community and have a successful transition to adulthood, by ensuring high quality services which meet local and national objectives;

- give extra attention and support to those children and young people with additional needs, and will support and involve parents and carers in the design and delivery of services;
- strive to achieve ever-higher standards and improved outcomes for all children and young people in Suffolk within the available resource, by improving performance and efficiency;
- work across all agencies to develop shared values and culture, to ensure that children and young people, their parents and carers, get a joined up service.

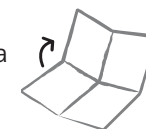
Children's Trust Governance Structure



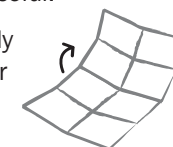
How to use this summary booklet

We want Suffolk's Children and Young People's Plan to be useful and informative for you.

Lifting this page will reveal a version of the Children and Young People's Plan that can be tailored to suit your organisation or group: the priorities we have set out may be able to inform your own yearly plans and priorities. For this reason, we have left a space next to each of the five Every Child Matters outcomes for you to write in your own commitments. You may wish to display this version in offices, staff rooms and group meeting areas, or anywhere else you think it will be useful.



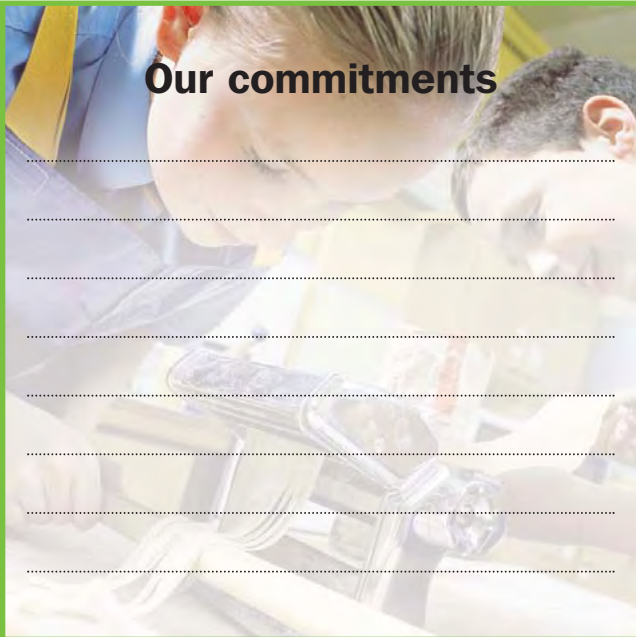
Unfolding the booklet fully reveals a summary poster of the plans and priorities that will guide the way organisations in Suffolk deliver services for the next three years: the commitments of the Suffolk Children's Trust Partnership. You may like to display this version in reception areas and waiting rooms for the public or your own staff, or anywhere else you think it will be useful.



To find out more about Suffolk's Children and Young People's Plan, visit www.suffolk.gov.uk/cyp. To request a hard copy of the plan, email us at cyp@cyp.suffolkcc.gov.uk

Our children and young people's plan

2006-09



Our commitments

Be healthy

PRIORITY BH1

Children and young people and their families and carers are supported and encouraged to adopt healthy lifestyles

PRIORITY BH2

Young people are well-informed about sexual health and supported in making informed choices

PRIORITY BH3

The emotional well-being of all children and young people is developed, and their mental health needs appropriately addressed

PRIORITY BH4

Children and young people can access information, advice and support for issues concerning substance misuse



Our commitments

Stay safe

PRIORITY SS1

Safe environments are provided for children, young people and their families

PRIORITY SS2

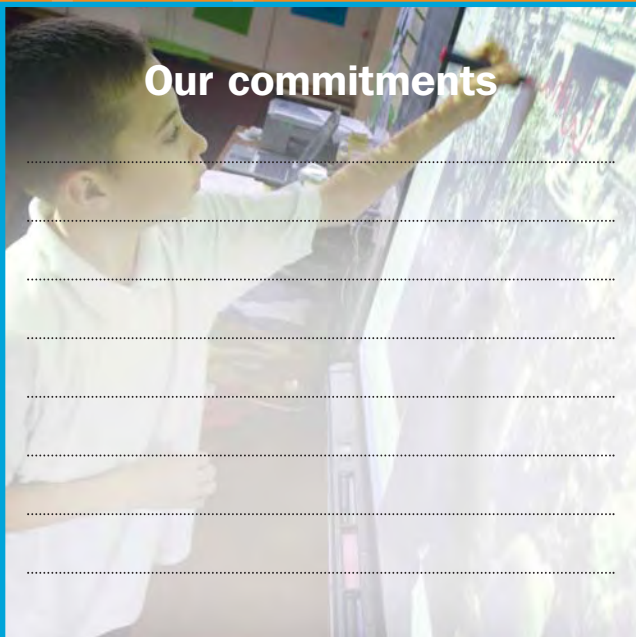
Children and young people in care are safe, have stability and achieve their full potential

PRIORITY SS3

Children and young people are protected from crime, anti-social behaviour or bullying

PRIORITY SS4

Children and young people are safeguarded from neglect and harm



Our commitments

Enjoy & achieve

PRIORITY EA1

Children and young people improve their standards of attainment, especially those who may be at risk of underachievements

PRIORITY EA2

Learning opportunities for young children are extended and are of high quality

PRIORITY EA3

Access to informal learning, leisure and recreation services for children and young people are improved

PRIORITY EA4

The numbers of children and young people who do not attend, or are excluded from, school are reduced

Make a positive contribution

PRIORITY MPC1

Children and young people are actively engaged with their communities and with the services provided for them, and are involved in decision-making in matters that affect them

PRIORITY MPC2

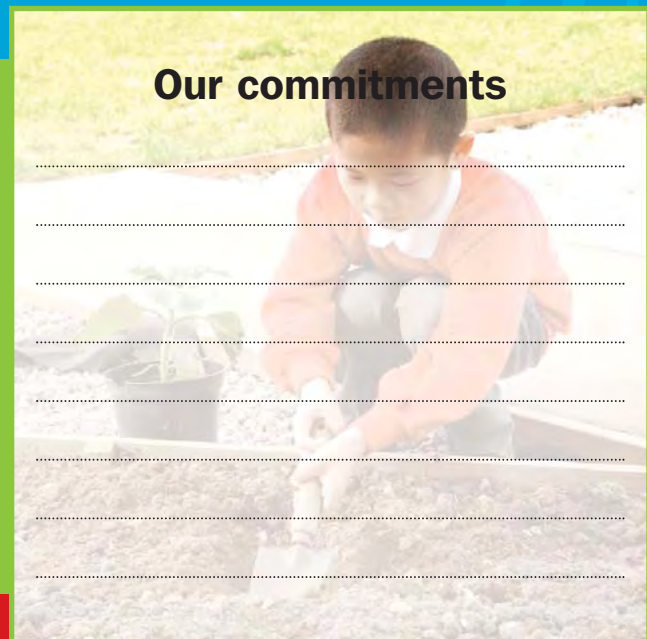
Children and young people are recognised for their responsible behaviour, and supported in reducing offending and anti-social behaviour

PRIORITY MPC3

Children and young people are supported in dealing with significant changes and challenges in their lives

PRIORITY MPC4

Children and young people are tolerant and supportive of each other, and respect differences in their communities



Our commitments



Our commitments

Achieve economic well-being

PRIORITY AEW1

Participation in post-16 learning is increased and attainment improved

PRIORITY AEW2

Children and young people live in decent homes, free from the effects of poverty

PRIORITY AEW3

Provision of high quality childcare to meet the needs of parents in work or seeking work is increased



Suffolk Children and Young People's Plan

2006-09



Be healthy

PRIORITY BH1

Children and young people and their families and carers are supported and encouraged to adopt healthy lifestyles

Our commitments

- a) Support women in reducing smoking during pregnancy
- b) Encourage the take-up and support the maintenance of breastfeeding
- c) Develop access to sports and other physical activities for children and young people and their families, including those with disabilities
- d) Develop an informed and balanced attitude to food and healthy eating

PRIORITY BH2

Young people are well-informed about sexual health and supported in making informed choices

Our commitments

- a) Improve access by young people to high quality information and advice on sex and relationships in confidence
- b) Reduce teenage pregnancy rates in all areas, including those areas where rates are currently significantly high
- c) Identify sexually transmitted infections early and reduce rates overall

PRIORITY BH3

The emotional well-being of all children and young people is developed, and their mental health needs appropriately addressed

Our commitments

- a) Encourage the development of emotional health and resilience
- b) Identify early those children and young people experiencing problems affecting their mental health, and provide early intervention and support, especially for vulnerable young people
- c) Improve access to and provision of appropriate mental health services for children and young people, including meeting the specific needs of children with learning difficulties

PRIORITY BH4

Children and young people can access information, advice and support for issues concerning substance misuse

Our commitments

- a) Develop the partnership's substance misuse provision within universal services to children and young people
- b) Consolidate and further develop provision to children and young people whose parents misuse drugs or alcohol
- c) Ensure that treatment services for young people are accessible and interventions are targeted and timely

Stay Safe

PRIORITY SS1

Safe environments are provided for children, young people and their families

Our commitments

- a) Reduce the number of children and young people killed or seriously injured on Suffolk's roads
- b) Help parents ensure that homes are safe places for children
- c) Provide safe areas within communities where children can play

PRIORITY SS2

Children and young people in care are safe, have stability and achieve their full potential

Our commitments

- a) Improve family support to minimise the number of children who need to be looked after
- b) Improve placement stability for looked after children
- c) Improve support to foster carers and recruit and retain more carers from black and minority ethnic communities
- d) Improve support to young people leaving care to help them access appropriate accommodation, employment and training

PRIORITY SS3

Children and young people are protected from crime, anti-social behaviour or bullying

Our commitments

- a) Reduce the number of children and young people who suffer from bullying or harassment
- b) Reduce the number of children and young people who are victims of crime
- c) Reduce the number of children and young people who suffer from racist abuse or harassment
- d) Reduce the fear of crime or bullying amongst children and young people

PRIORITY SS4

Children and young people are safeguarded from neglect and harm

Our commitments

- a) Increase the proportion of children and young people who are safe from neglect or harm
- b) Reduce the number of children placed on the Child Protection Register
- c) Develop effective family support projects and programmes to help divert children away from the child protection system



Enjoy & Achieve

PRIORITY EA1

Children and young people improve their standards of attainment, especially those who may be at risk of underachievement

Our commitments

- a) Raise standards of educational performance at Key Stages 1-4
- b) Reduce the attainment gap for specific groups vulnerable to underachievement, including Black & Minority Ethnic pupils and Looked After Children
- c) Provide effective support for under-performing schools
- d) Provide a broader curriculum to widen and increase the motivation of all pupils

PRIORITY EA2

Learning opportunities for young children are extended and are of high quality

Our commitments

- a) Improve access to integrated services for children and families through a county-wide network of Children's Centres
- b) Reduce the gap in the Foundation Stage Profile scores of children living in the most disadvantaged areas

PRIORITY EA3

Access to informal learning, leisure and recreation services for children and young people are improved

Our commitments

- a) Improve access to a range of activities and opportunities offered through the Extended Schools programme and the Children's University initiative
- b) Improve access to sporting, cultural and recreational opportunities for children and young people in their free time

PRIORITY EA4

The numbers of children and young people who do not attend, or are excluded from, school are reduced

Our commitments

- a) Improve attendance in identified schools and target persistent truants
- b) Further reduce the number of permanent exclusions
- c) Target support for attendance and exclusions to identified vulnerable groups of children and young people, such as Looked After Children and travellers

Make a positive contribution

PRIORITY MPC1

Children and young people are actively engaged with their communities and with the services provided for them, and are involved in decision-making in matters that affect them

Our commitments

- a) Encourage all schools to have active School Councils
- b) Embed the 'Having My Say' involvement strategy in all organisations working with children and young people
- c) Provide opportunities for young people to have a direct involvement in decision-making
- d) Expand opportunities for young people to get involved in volunteering in local communities

PRIORITY MPC2

Children and young people are recognised for their responsible behaviour, and supported in reducing offending and anti-social behaviour

Our commitments

- a) Encourage appropriate behaviour in schools and other settings
- b) Promote preventative work with children and young people who have offended or are at risk of offending
- c) Reduce rates of re-offending by young people

PRIORITY MPC3

Children and young people are supported in dealing with significant changes and challenges in their lives

Our commitments

- a) Ensure all children have a successful transfer between school phases
- b) Provide support to children with additional needs based around the needs of the child and family
- c) Ensure transitional reviews for young people with disabilities are person-centred and holistic
- d) Involve care leavers in determining integrated support packages which address their whole needs
- e) Support young carers in maintaining their learning and leisure activities alongside their family commitments

PRIORITY MPC4

Children and young people are tolerant and supportive of each other, and respect differences in their communities

Our commitments

- a) Support children and young people to deal with conflict and anxiety constructively and effectively
- b) Develop activities that encourage children and young people to have respect for each other, and enable them to value and be valued by their communities
- c) Promote the positive image of children and young people in Suffolk



Achieve economic well-being

PRIORITY AEW1

Participation in post-16 learning is increased and attainment improved

Our commitments

- a) Extend the breadth and choice of subjects that young people can study and improve local access through effective partnership working
- b) Reduce the proportion of young people who are not in education, employment or training (NEET)
- c) Accelerate the rate of improvement in attainment at advanced level
- d) Increase the proportion of young people that progress to higher education (HE) and raise young people's awareness about the full range of opportunities in HE

PRIORITY AEW2

Children and young people live in decent homes, free from the effects of poverty

Our commitments

- a) Improve the standard of social housing for families
- b) Ensure that vulnerable groups, such as care leavers and homeless families, have access to decent and sustainable accommodation
- c) Encourage the take-up of benefits by disadvantaged families.

PRIORITY AEW3

Provision of high quality childcare to meet the needs of parents in work or seeking work is increased

Our commitments

- a) Increase the availability of childcare places, especially in areas where there is insufficient provision
- b) Increase the provision of school-age childcare in identified localities

