

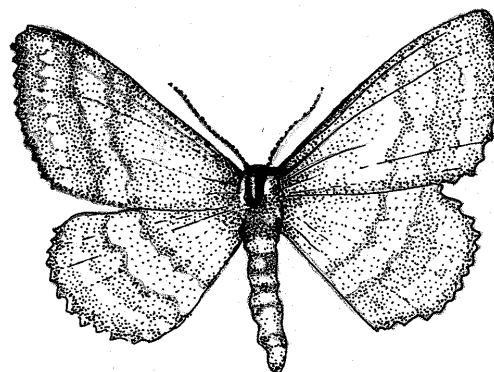
Bright Wave Moth (*Idaea ochrata cantiata*) Species statement

This moth has a bright orange ground colour and flies from late June to early August and over-winters as a larva. It inhabits coastal sandhills and sandy shingle beaches and rests during the day amongst small bushes or low herbage.

Current status

The moth is now only known to be present in Kent (from Walmer to Sandwich). Old records exist from near St Osyth in Essex and near Thorpeness Suffolk. The species is listed as rare on the GB Red List, but may be re-graded as vulnerable.

In Suffolk the moth has been recorded on a 3km stretch of coast from Thorpeness to Aldeburgh but has not been seen in the last five years. The land is managed as a Local Nature Reserve (with a management agreement with RSPB) and a Suffolk Wildlife Trust Reserve. The moth was recorded in 1982 (by B. Elliot and B. Skinner). Little is known about its ecology. It is presumed by local recorders as almost certainly extinct.



BRIGHT WAVE

Natural Areas

Suffolk Coast Maritime

Current factors causing loss or decline

Recreational pressure on upper beaches.

Current Action

Survey work was undertaken in 1997 through English Nature's Species Recovery Programme, but without success.

Suffolk Moth Group and Suffolk Branch of Butterfly Conservation and the Suffolk Naturalists Society have undertaken survey work 1997 – 2003 along the coast from Aldeburgh to Minsmere but with no positive results. The moth is now presumed to be locally extinct.

Objectives for the species

Continue to survey for presence of Bright Wave Moth at known Suffolk site and to manage habitat in the known area favourably.

Proposed action

Little can be done to protect this species unless its presence in Suffolk is confirmed. The requirements of the species should be considered in the implementation of the Coastal Vegetated Shingle action plan, and the habitat managed appropriately.