

Creating a



IPSWICH  
crime & disorder  
reduction  
PARTNERSHIP

*making our Community safer*

CRIME & DISORDER REDUCTION PARTNERSHIP  
STRATEGY 2005 - 2008

# LIST OF CONTENTS

	<b>Page(s)</b>
<b><u>Section 1 – Introduction</u></b>	3-6
• Statement of Purpose	4
• Purpose of Strategy	4
• Partnership Structure	4
• Structure of the Strategy	5-6
<b><u>Section 2 – A Local and National Overview</u></b>	6-9
• Links to Local Strategies and Plans	6
• National Priorities and Strategies	6-9
<b><u>Section 3 – Audit Findings</u></b>	9-14
• The District – An Overview	9-10
• Summary of the Audit Findings	11
• Audit Summary Consultation Document	11-13
• Consultation Feedback	13-14
<b><u>Section 4 – The Priorities</u></b>	14-15
• Strategic Aims	14
• Priority Development	15
• Drug and Alcohol Misuse	15
<b><u>Section 5 – Action Planning</u></b>	16
• The Action Planning Process	16
<b><u>Section 6 – Performance Management</u></b>	16-17
• Performance Management	16
• Monitoring and Evaluation	16-17
• Reporting Progress Against Drug and Alcohol Misuse	17
• Annual Reports	17
<b><u>Appendix 1</u></b>	18
• Home Office BCS comparator recorded crime table	18
<b><u>Appendix 2</u></b>	19
• Ward map of Ipswich	19
<b><u>Appendix 3</u></b>	
• Annual key performance indicators – Safer Ipswich Targets	20
<b><u>Appendix 4</u></b>	
• Abbreviations – A list of abbreviations used in the document	21

## FOREWORD

The Crime and Disorder Act 1998 (as amended) imposes a statutory duty on local authorities, the police, police authority, Fire Authority, and Primary Care Trust to work in partnership with other organisations, to reduce crime and disorder. In accordance with the provisions of the Act, Ipswich Borough Council, Suffolk County Council, Suffolk Constabulary, Ipswich Primary Care Trust, Suffolk Police Authority, and Suffolk Fire and Rescue Service, working together as the responsible authorities, are now publishing the third “Safer Ipswich” Crime and Disorder Reduction Strategy for the Borough of Ipswich. This Strategy covers a three-year period April 2005 to March 2008, during which time it will be kept under review and updated.

The Crime and Disorder Act was designed to tackle crime and disorder at a local level and a new audit of crime and disorder in Ipswich, undertaken in the Autumn 2004, helped to identify a number of local issues that might need to be addressed within the next Strategy. It was necessary to prioritise these issues so that another three-year action plan could be implemented and its objectives achieved.

Most importantly, the Crime and Disorder Act recognises that it is the people who live and work in the area who are best placed to identify the problems facing them and consider the options for addressing them. The Act ensures that the local community are involved at every stage in the process and the “Safer Ipswich” Crime & Disorder Reduction Partnership has brought together a broad base of statutory and voluntary organisations, and people working in both the public and private sector. The results of the Audit were distributed widely in a Consultation Bulletin and Questionnaire, informing local people of the emerging priorities and asking for their comments.

As a result, the Ipswich Crime and Disorder Reduction Strategy for the Borough of Ipswich 2005-2008 has been developed according to local information and in consideration of the views of local people. Views were sought through direct mailing to interested parties, features in the local newspapers, presentations at community forums, and availability of the questionnaire on the internet. An alternative questionnaire was designed to reach a younger audience and these were distributed through the ‘*Safer Summer*’ project, at key music concerts within Ipswich. The “Safer Ipswich” Crime & Disorder Reduction Partnership will continue to work together to address these issues and to make a real difference by reducing crime and disorder in Ipswich.

Ipswich Borough Council

Suffolk Constabulary

Suffolk County Council

Suffolk Police Authority

Ipswich Primary Care Trust

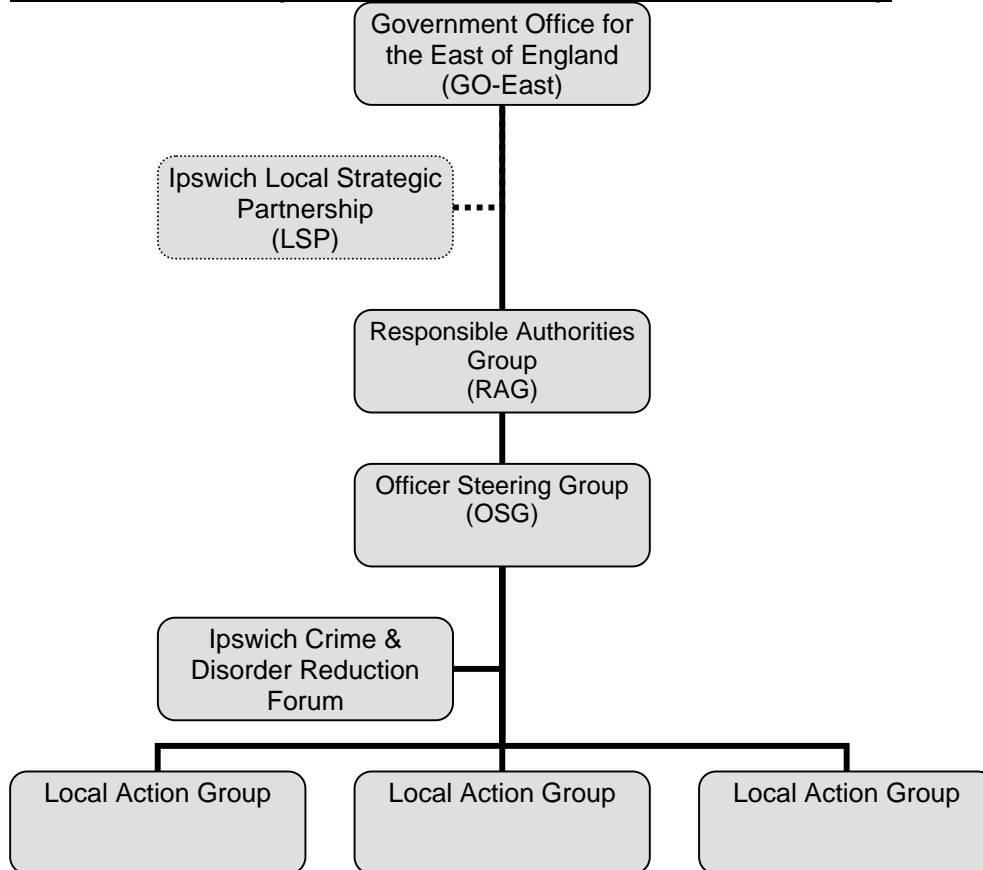
Suffolk Fire and Rescue Service

## SECTION 1 - INTRODUCTION

### Statement of Purpose

The Ipswich Crime and Disorder Reduction Partnership works together with the aim of building a safer, stronger and more secure Ipswich.

### The Structure of the Ipswich Crime & Disorder Reduction Partnership



**GO-East**

-

The regional office of central government which brings together into a single operation the varied regional activities of a range of Government departments. The Crime Reduction Team within GO-East monitors and evaluates the work of the Partnership and manages national funding streams.

**Ipswich Local Strategic Partnership**

-

A multi-agency partnership designed to improve communication and co-ordination of plans and strategies across agencies, with the overall aim of improving the quality of life and governance of Ipswich. Crime is a key theme of the Local Strategic Partnership, and as such they are kept informed of the work of the Partnership.

**Responsible Authorities Group**

-

The strategic decision-making body, as identified by the Crime and Disorder Act 1998. The Group comprises of members and officers of Ipswich Borough

Council., Suffolk County Council, Suffolk Drug Action Team, Suffolk Constabulary, Ipswich Primary Care Trust, Suffolk Police Authority and Suffolk Fire and Rescue Service.

- The Officer Steering Group** - A multi-agency group attended by representatives of the key partners and agencies prescribed by the Crime and Disorder Act 1998.
- The Ipswich Crime & Disorder Reduction Forum** - A major consultative group made up of a wide range of statutory and voluntary agencies. The forum contributes to the formulation, implementation, and the monitoring of the Ipswich Crime and Disorder and Drug Misuse Strategy.
- Local Action Groups** - Thematic or geographically based multi-agency groups with the purpose of implementing the Partnership's action plans and achieving the targets outlined in the Strategy. These groups usually include representatives from statutory and voluntary agencies and members of the local community.

The "Safer Ipswich" Crime and Disorder Reduction Partnership works together with the other four Partnerships in the County. Together they have adopted a common approach to strategy development, which has enabled good practice to be shared and assisted organisations working across the county to engage more fully with the process. A common template was developed for collation and analysis of data and a critical path agreed, setting out key processes and target dates. Common consultation plans were developed, and work shared between the three responsible authorities.

The Local Government Act 2000 requires Crime and Disorder Reduction Strategies to receive the support of local authorities' Full Council. Terms of reference for the various Partnership groups are available from the Community Safety Officer at the Borough/District Council.

### **Structure of the Strategy**

The strategy document is laid out in six broad sections, each containing various subsections.

- Section 1 includes the introduction and the purpose of the strategy.
- Section 2 provides details of local and national plans and priorities that influence the Partnership's approach to community safety and drug and alcohol misuse issues within the district.
- Section 3 provides a brief outline of the audit findings and the rationale for selecting the Priorities.
- Section 4 outlines the Priorities.
- Section 5 explains the action planning process that will be adopted to ensure effective steps are taken to address the identified issues and
- Section 6 outlines the Monitoring and Evaluation Process that will be adopted by the Partnership.

## SECTION 2 – A LOCAL AND NATIONAL OVERVIEW

### Links to local strategies and plans

In the spirit of Section 17 of the Crime and Disorder Act 1998<sup>1</sup>, the Partnership is constantly striving to make links with key plans and targets produced within partner agencies to ensure that the impact on crime, disorder and substance misuse is considered by all officers when writing and updating plans and policies.

As priorities and targets are constantly being reviewed and amended it would be inappropriate to attempt to provide a definitive list. However the following plans and targets have been identified as having key links to the Crime and Disorder and Drug Misuse Reduction Strategy:

Ipswich Borough Council BVPIs/PSA targets  
Ipswich Local Strategic Partnership Community Plan  
Local Authority Public Service Agreement Targets  
Ipswich PCT Local Delivery Plan  
Suffolk Constabulary Policing Plan 2005-08  
Suffolk Drug and Alcohol Misuse Harm Reduction Strategy 2005-08  
Suffolk Fire & Rescue Service Community Fire Safety Plan  
Suffolk Youth Justice Plan  
Local Area Agreements

### National Priorities and Strategies

The following section outlines key legislation and strategies which impact on the work of the Partnership, and influences the priorities outlined in this strategy.

**Anti-Social Behaviour Act 2003:** The purpose of the Anti-social Behaviour Act is to provide the tools for practitioners and agencies to effectively tackle anti-social behaviour. It contains measures drawn up from across five Government Departments and builds on existing legislation to clarify, streamline and reinforce the powers that are available to practitioners.

For further information on the Act please visit the Home Office website at:  
[www.homeoffice.gov.uk/crime/antisocialbehaviour/legislation/asbact.html](http://www.homeoffice.gov.uk/crime/antisocialbehaviour/legislation/asbact.html)

**The Prolific and Other Priority Offenders Strategy:** This strategy is designed to tackle the most persistent and prolific offenders committing crime within local communities. It has three complementary components:

- Prevent and Deter – to stop people (overwhelmingly young people) engaging in offending behaviours and graduating into prolific offenders;
- Catch and Convict - actively tackling those who are already prolific offenders; and
- Rehabilitate and Resettle – working with identified prolific offenders to stop their offending by offering a range of supportive interventions. Offenders will be offered the opportunity for rehabilitation or face a very swift return to the courts.

The new strategy is CDRP led, with schemes set up to cover every CDRP in the country.

For further information about the Prolific and Other Priority Offenders Strategy please visit:  
[www.crimereduction.gov.uk/ppo.htm](http://www.crimereduction.gov.uk/ppo.htm)

---

<sup>1</sup> Section 17 states:...'it shall be the duty of each authority...to exercise its various functions with due regard to the likely effect of the exercise of those functions on, and the need to do all it reasonably can to prevent, crime and disorder in its area' which means that 'each responsible authority (should) take account of the community safety dimension in all of its work. All policies, strategies, plans and budgets will need to be considered from the standpoint of their potential contribution to the reduction of crime and disorder.'

**National Policing Plan 2005-08:** In November 2004, the Home Secretary launched the National Policing Plan for 2005-08. It contains five key priorities:

- To reduce overall crime – including violent and drug-related crime – in line with the Government's Public Service Agreements (PSAs);
- To provide a citizen-focused police service which responds to the needs of communities and individuals, especially victims and witnesses, and inspires public confidence in the police, particularly among minority ethnic communities.
- To take action with partners to increase sanction detection rates and target prolific and other priority offenders.
- To reduce people's concerns about crime, and anti-social behaviour and disorder.
- To combat serious and organised crime, within and across force boundaries.

For further information about the National Policing Strategy 2005-08 please visit:  
[www.policereform.gov.uk/docs/national\\_policing\\_plan.pdf](http://www.policereform.gov.uk/docs/national_policing_plan.pdf)

**The Domestic Violence, Crime and Victims Act 2004:** The Domestic Violence, Crime and Victims Act 2004, will strengthen the rights of victims and witnesses, ensuring they receive the help, support and protection they need. They build on the Government's ongoing reform of the criminal justice system, rebalancing the process in favour of victims and witnesses. Implementation of the Act will be rolled out from April 2005.

Further information about the Domestic Violence, Crime and Victims Bill is available at:  
[www.crimereduction.gov.uk/legislation37.htm](http://www.crimereduction.gov.uk/legislation37.htm)

**BVPs and PSA Targets:** Following the Government's 2004 spending review there are three main PSA targets that are of particular significance to the CDRP. These are:

- PSA 1 – Reduce crime by 15% and further in high crime areas, by 2007-08
- PSA 2 – Reassure the public, reducing the fear of crime and anti-social behaviour, and building confidence in the Criminal Justice System (CJS) without compromising fairness
- PSA 4 – Reduce the harm caused by illegal drugs including substantially increasing the number of drug misusing offenders entering treatment through the CJS.

These complement the Police Authority Best Value Performance Indicator (BVPI) Targets, namely:

- BV126 – Domestic Burglary per 1000 detected
- BV127 - Violent Crimes per 1000 population
- BV128 – Vehicle Crimes per 1000 population
- BV176 - The number of domestic violence refuge places per 10,000 population, which are provided or supported by the authority
- BV (X34) - Life threatening crime and gun crime per 1,000 population

and the Local Authority BVPIs:

- BV174 - The number of racial incidents recorded by the local authority per 100,000 population
- BV175 - The percentage of racial incidents that resulted in further action
- BV176 The number of domestic violence refuge places per 10,000 population which are provided or supported by the authority
- BV126 - Domestic burglaries per 1000 households and percentage detected
- BV127a - violent offences committed by a stranger per 1,000 population
- BV127b - violent offences committed in a public place per 1,000 population
- BV127c - violent offences committed in connection with a licensed premises per 1,000 population

- BV127d - violent offences committed under the influences per 1,000 population
- BV128 - Vehicle crimes per 1,000 population and percentage detected.

Further information about Government PSA targets is available at: [www.treasury.gov.uk/spending\\_review/spend\\_sr04/psa/spend\\_sr04\\_psaindex.cfm](http://www.treasury.gov.uk/spending_review/spend_sr04/psa/spend_sr04_psaindex.cfm)

Further information about Government BVPI targets is available at: [www.odpm.gov.uk/stellent/groups/odpm\\_localgov/documents/page/odpm\\_locgov\\_035599.pdf](http://www.odpm.gov.uk/stellent/groups/odpm_localgov/documents/page/odpm_locgov_035599.pdf)

**National Drug Strategy:** Aiming to reduce the harm that drugs cause to society - communities, individuals and their families - the Drug Strategy has four main elements: -

- Young people - preventing today's young people from becoming tomorrow's problematic drug users;
- Reducing supply - reducing the supply of illegal drugs.
- Communities - reducing drug-related crime and its impact on communities;
- Treatment and harm minimisation - reducing drug use and drug-related offending through treatment and support. Reducing drug-related death through harm minimisation.

For further information about the National Drug Strategy visit: [www.drugs.gov.uk/NationalStrategy](http://www.drugs.gov.uk/NationalStrategy)

**National Drug Strategy Performance Management Framework (NDSPMF):** The National Drug Strategy has a new Performance Management Resource Pack, which embeds key performance indicators for the 4 themes of the National Drug Strategy into the performance management frameworks of relevant government departments.

This framework will be used to measure the Partnership's performance when tackling drug and alcohol misuse.

Further information about the NDSPMF is available at: [www.drugs.gov.uk/ReportsandPublications/NationalStrategy/1075717576/78168-COI-Drugs.pdf](http://www.drugs.gov.uk/ReportsandPublications/NationalStrategy/1075717576/78168-COI-Drugs.pdf)

**Every Child Matters:** 'The Every Child Matters' Green Paper was published for consultation in September 2003. In March 2004, the Government published Every child matters: next steps. The new Children Act 2004 provides the legal framework for the programme of reform. Every Child Matters: Change for Children published in December 2004, brings together all the ways the Government are working towards improved outcomes for children, young people and families into a national framework for 150 local-authority-led change programmes.

Better outcomes depend on the integration of universal services with targeted and more specialized help, and on bringing services together around the needs of the child and family.

Further information about 'Every Child Matters' is available at: [www.everychildmatters.gov.uk](http://www.everychildmatters.gov.uk)

**Alcohol Harm Reduction Strategy for England:** This strategy was introduced by the Government in March 2004 to tackle the growing problem of alcohol abuse in England. It aims to co-ordinate the range of government interventions to prevent, minimize and manage alcohol related harms and to create a single more coherent national strategy. Most importantly, the strategy sets out a new cross-government approach that relies on creating a partnership at both national and local levels between government, the drink industry, local, police and health authorities, and individuals and communities to address alcohol misuse.

Further information about the Alcohol Harm Reduction Strategy is available at: [www.strategy.gov.uk](http://www.strategy.gov.uk)

**Local Area Agreements:** These are the Government's arrangements to build a more flexible and responsive relationship between central government and a locality on the outcomes that need to be achieved at a local level. Central to these proposals is the formation of 'The Safer and Stronger

Communities Fund' (SSCF). This merges several existing ODPM and Home Office funding streams that share a number of the closely related aims of this strategy.

Further information about Local Area Agreements and 'The Safer and Stronger Communities Fund' can be found at: [www.odpm.gov.uk](http://www.odpm.gov.uk)

## SECTION 3 – AUDIT FINDINGS

### The Borough – an overview

Ipswich, the County Town of Suffolk, covers an area of 3,981 hectares (15.3 square miles) of which over 320 hectares is parkland. Although Ipswich has a resident population of 117,405 as one of the largest urban centres in East Anglia, it serves a much wider cosmopolitan population. Located on the main trunk road and rail network with a vibrant port close to the east coast, Ipswich has excellent communication links with London, the South East, the Midlands and mainland Europe.

The town has a prosperous broad based economy with the potential to develop as one of the most economically dynamic parts of the region. The majority of employees work in the financial services sector, but there has been a rapid expansion of the high technology sector through the innovative IP-City and Cambridge 2 Ipswich Hi-tech Corridor programme, delivering millions of pounds in new investment and hundreds of new jobs to the area. At the same time, Ipswich continues to have a number of major manufacturing businesses, which contributes significantly to the economic activity of the whole area.

Whilst the shopping centre thrives, Ipswich Waterfront, also at the heart of the town is currently undergoing wide scale renewal and redevelopment to achieve its regeneration as a mixed –use area. Neptune Quay, a major residential development by Bellway Homes has been constructed on the northern quay and a new hotel the Salthouse Harbour Hotel opened its doors onto the waterfront in 2003. Other large schemes have also been built, or are under construction and many more are in the pipeline. The proposed redevelopment of the disused Cranfields Mill for example, will enable the construction of a landmark building for the town, with a residential tower 23 storeys high providing over 300 new homes, an indoor and outdoor performance area and a home for dance east, craft workshops, cafes and restaurants. Hundreds more new homes are being provided in a range of high quality developments around the marina, with around 22% of those homes being for affordable housing. Each of these new schemes will also introduce cafes, restaurants, shops and other visitor attractions to the area. Other schemes such as the refurbishment of Felaw Maltings offer new premises for hi-tech companies.

In addition, a unique partnership of the University of East Anglia, Essex University and Suffolk College, (part funded by Ipswich Borough Council and Suffolk County Council) has been successful in a bid to the Higher Education Funding Council and the Learning Skills Council to develop a new expanded college of Further Education and a new combined University Campus on the Waterfront.

Improvements to other central areas are planned - At Ipswich Village there has been substantial investment in the Football Club, with its new stands. It is planned to turn this part of town into a vibrant sports and leisure quarter, embracing Cardinal Park which is already an attractive entertainment centre for the whole region. The relocation of Suffolk County Council's Offices to Ipswich Village in March 2004 was followed quickly by the Crown Court in May. This process will lead to a freeing up of central sites, which, if comprehensively redeveloped, could form a westerly extension of the town centre; potentially further increasing the leisure and retail offer of the town.

However a successful regional centre with a prosperous economy and thriving shopping centres can mask the extent and effects of poverty and deprivation. People on low incomes may be disproportionately affected by crime, living in high-risk areas often without household insurance, and often experiencing a greater fear of crime. Studies have shown that whilst unemployed people have the same chance of experiencing crime as those in work, the former are more likely to be victims of different offences such as car crime, burglary and household theft. The 2004 indices provide information in respect of all Super Output Areas in the country. Previous Indices focussed on ward

boundaries. The focus of the current indices is on 32,482 Super Output Areas in the country. In Ipswich there are 16 electoral wards and within those there are 79 super output areas. A super output area is an amalgam of census districts and contains approx 1,500 people. The use of these sub ward small areas allows for smaller pockets of deprivation to be pinpointed and also allows for smaller areas that would otherwise be hidden in larger and wealthier areas also to be identified.

2 out of the 79 super output areas in Ipswich feature in the top 6% of most deprived super output areas nationally and they are situated in Priory Heath and Gainsborough wards (South East area).

5 out of 79 super output areas in Ipswich feature in the top 10% of most deprived super output areas nationally. 1 is situated in Priory Heath, 2 in Gainsborough, 1 in Alexandra and 1 in Whitton

11 out of 79 super out put areas in Ipswich feature in the top 15% of most deprived areas in the country.

Nineteen (approx 25%) of the 79 Super Output Areas in Ipswich can be found in the 20% of most deprived Super Output Areas in the country.

26 out of 79 super output areas feature in the top 25% of most deprived Super Output areas in the country

48 out of 79 super output areas in Ipswich feature in the top 50% of most deprived Super Output areas in the country.

On a regional basis of the 3550 Super Output areas that make up the East of England 25 Super output areas in Ipswich feature in the top 10% of most deprived super output areas in the east of England

It is important to recognise that as a successful regional centre, Ipswich will experience greater levels of crime than the more rural areas within the County, and indeed the concentrated activity within Ipswich Town Centre will inevitably lead to higher crime rates in Alexandra Ward, particularly when measured per 1000 population. Overall though, the crime rate remains below the national average and is similar to towns of comparable size and nature elsewhere in the country. However, crime and fear of crime is very much on the public agenda and is as much a concern for people in Ipswich as it is elsewhere.

## **Summary of the Audit Findings**

As previously stated, an audit of crime, disorder and drug misuse was carried out during the summer of 2004, analysing data collected from numerous agencies spanning the period April 2001 and March 2004. The following paragraphs summarise the key findings.

A postal survey carried out by Suffolk County Council in March 2004 showed that 61% of Ipswich residents felt 'fairly safe' in the area where they lived, and 18% felt 'very safe'.

The annual cost of crime in Ipswich for 2003/04 was estimated to be in the region of £40,176,937. These costs include lost or damaged property, time spent, emotional or physical impact, security, insurance premiums, and employer costs. Public sector costs account for about 30% of the overall total cost and include government crime prevention spending, criminal justice system costs, victim services and health services.

Between January 2001 and June 2003, 11 Anti-Social Behaviour Orders were granted against individuals in Ipswich. The estimated cost of these proceedings, including Officer time, is calculated to be in the region of £28,000. (Source: Holden McAllister Anti-Social Behaviour Report)

Overall, crime rates in Ipswich are above the county average at 138.5 offences per 1000 population compared to 80.3 offences per 1000 population for Suffolk as a whole. Between April 2003 and March 2004, Suffolk Constabulary in the Ipswich Borough Council area, recorded 16217 offences.

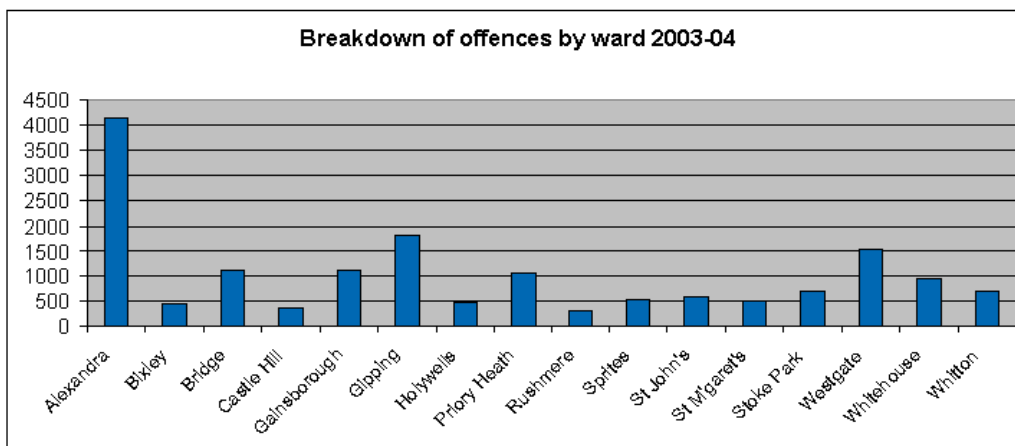
Whilst these levels may appear very high at first glance it should be remembered that patterns of offending vary greatly between urban and rural areas and it is therefore not always favourable to make direct comparisons between areas within a county.

For this reason, the Home Office compares areas from across England and Wales that have a similar socio-economic makeup. When comparing these areas for the period January—March 2004, Ipswich had an offence rate per 1000 population for all crime that was just better than average, and the third lowest burglary rate in its group (of 15 areas). Ipswich also had vehicle crime and violent crime rates that were better than average.

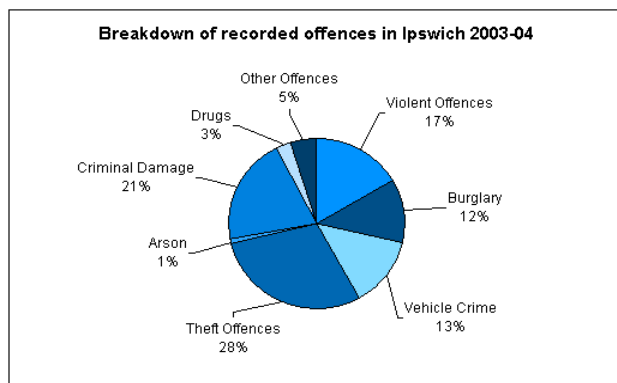
For possession of drugs and shoplifting, Ipswich had the second highest rate of offences compared to the other CDRPs in its family group. It had the third highest rate for arson, assault on police officers, other damage, theft in a dwelling and theft of cycles.

When compared to the other 376 CDRP areas across England and Wales, Ipswich ranked 87<sup>th</sup> for rate and volume of BCS comparator recorded crime during 2003-04. A list of the BCS comparator recorded crimes on which this ranking was calculated is included at *Appendix 1*.

## **Audit Summary Consultation Document**



During the autumn of 2004, efforts were made to consult with the local community about the audit findings. A summary document was produced which highlighted the key issues identified by the audit and views were sought about the importance of these issues to local people and businesses. The following information formed the basis of this document.



Eleven issues were identified that consultees were asked to rank in order of importance: (Figures appearing in *italics* relate to the actual number of recorded offences.) Please see *Appendix 2* for a map of Ipswich broken into wards.

#### **ARSON (163)**

The rate of arson in Ipswich was above the Suffolk average of 1.0 offence per 1000 population at 1.4. Last year there were 163 arson offences reported to the police. Three wards had rates over twice the county average: Priory Heath (3.8, 23), Gainsborough (3.3, 28), and Alexandra (3.1, 22).

#### **BURGLARY (1951)**

##### **Of Peoples Homes:**

The 'dwelling burglary' rate for the borough was 6.9 offences per 1000 population. The four wards with the highest rates were: Westgate (17.1, 129), Bridge (11.6, 84), Gipping (9.7, 74) and Whitton (9.7, 79).

##### **Of Sheds, Garages and Other Buildings:**

There were 1141 'other' burglaries in Ipswich last year. These included sheds, garages, outbuildings, and business premises. The average offence rate

for the borough was 9.7 offences per 1000 population. Three wards had rates around twice the borough average: Alexandra (21.4, 152), Gainsborough (19.6, 164), and Priory Heath (19.3, 124).

#### **CRIMINAL DAMAGE (3326)**

During 2003-04, the average rate for criminal damage offences across the borough was 28.4 offences per 1000 population. Four wards had rates over one and a half times higher than this average:

Alexandra (81.4, 579), Gipping (47.0, 358), Priory Heath (45.9, 295), and Gainsborough (42.9, 360).

#### **DISORDER (5418)**

Public disorder events tend to peak in line with periods of activity associated with the nighttime economy (e.g. pub/nightclub closing times). Unsurprisingly, most events are recorded during the evening and at weekends.

Within the disorder category the most commonly recorded incident in Ipswich was 'Disturbance in a Public Place'. The borough average for this type of incident was 18.8 offences per 1000 population. Wards with higher than average rates were

Alexandra (70.5, 501), Gipping (31.3, 238), Gainsborough (27.4, 230), Priory Heath (26.3, 168), and Westgate (24.6, 187).

#### **DOMESTIC VIOLENCE (2064)**

Of the total number of domestic violence incidents reported to Suffolk Police during 2003/2004, 43% were in Ipswich. This equated to 2064 incidents.

#### **DRUGS (469)**

There were 469 drugs offences recorded in Ipswich by Suffolk Police during 2003/2004. Of these offences 88 were classed as 'serious drugs offences' and the remaining 381 offences were recorded as 'other drug offences'.

Of the total drugs offences 189 were recorded in Alexandra, 67 in Westgate, and 60 in Gipping.

#### **THEFT**

##### **Theft from Shops (1321)**

Three wards had rates above the borough average of 11.3 offences per 1000 population. These were Alexandra (103.2, 734), Whitehouse (14.3, 107), and Gipping (13.4, 102).

##### **Cycle Theft (434)**

Alexandra ward had a rate of cycle theft almost five times the borough average of 3.7 offences per 1000 population (18.0, 128).

##### **Other thefts & handling (2316)**

Two wards had rates significantly higher than the borough average of 19.8 offences per 1000 population. These were: Alexandra (103.4, 735) and Gipping (34.6, 264).

### **RACIAL HARASSMENT (211)**

There were 211 racist incidents recorded in Ipswich during 2003/04. This equated to approximately 43% of all racist incidents countywide. The 2001 Census showed that the proportion of people from black and minority ethnic groups living in Ipswich was equal to the county rate at 2.8%.

A county breakdown of racist incidents for 2003/04 showed that 32% were harassment, 26% abuse, 22% assault, 10% criminal damage and 10% were other types of offences. The incident rate in Ipswich has risen from 76.9 offences per 100,000 population in 1998/99 to 180.2 offences per 100,000 population in 2003/04. The Suffolk Racial Harassment Initiative (RHI) encourages the reporting of incidents which may account for the significant increase in incidents over recent years.

### **VEHICLE CRIME (2152)**

#### **Theft of Motor Vehicle**

Last year in Ipswich 539 vehicles were stolen. The borough average was 4.6 offences per 1000 population. Four wards had rates more than one

and a half times higher than the average: Gipping (10.6, 81), Alexandra (9.3, 66), Westgate (7.8, 59), and Stoke Park (5.9, 43).

#### **Theft from Motor Vehicle**

During 2003/2004 there were 1613 thefts from motor vehicles in Ipswich. The average rate for 'thefts from motor vehicle' across the borough was 13.8 offences per 1000 population. The wards in Ipswich which exceeded this rate were: Alexandra (39.8, 283), Gipping (27.4, 209), Bridge (23.8, 172), and Westgate (22.4, 169).

### **VIOLENT CRIME (2691)**

There were 2691 violent offences in Ipswich last year. These included 141 robberies and 162 sexual offences. The violent crime rate for the borough was 23.0 offences per 1000 population. Three wards had rates more than one and a half times the borough average: Alexandra (109.6, 779), Gipping (40.9, 312), and Westgate (37.8286).

## **Consultation Feedback**

The audit findings were summarised in a consultation bulletin and a questionnaire designed that was widely distributed for consultation.

Views were sought through direct mailing to interested parties, features in the local newspapers, presentations at community forums, and availability of the questionnaire on the internet, gaining over 200 responses (see table one for age distribution). An alternative questionnaire was designed to reach a younger audience and these were distributed through the 'Safer Summer' project, at key music concerts within Ipswich, with over 1,400 replies (table two – age distribution).

Table One – Age of respondents – Crime & Disorder Questionnaire

Age (in years)	Number of respondents	% of respondents
0-16	1	0.4
16-25	9	3.7
26-35	23	9.5
36-45	40	16.5
46-55	52	21.4
56-65	50	20.6
66-75	47	19.3
Over 75	19	7.8

No reply = 4 / 1.6%

Table Two – Age of respondents – Safer Summer Questionnaire

Age (in years)	Number of respondents	% of respondents
0-10	313	21.3
11-18	615	41.8
19-25	98	6.7
26-40	219	14.9
41+	73	5

No reply = 154 / 10.5%

Individuals were asked to rank in order of importance, the eleven issues identified by the audit. Other questions focused on how safe people felt and issues concerning anti-social behaviour (these issues being highlighted at community forums).

Results from the Audit and strategy consultation concluded that issues that were of paramount importance to respondents were public disorder (especially related to alcohol use), violent offences and burglary of people's homes. This was despite the fact that burglary has been at its lowest levels in Ipswich for 5 years. Anti-social behaviour was also of great concern, this being particularly prevalent in feedback from community forums.

When asked about what particular types of behaviours were considered to be anti social, the majority of responses were concerned with drunkenness and youths hanging around in groups. Interestingly, a similar response was gained from younger members of the community. There was a widely held view that anti-social behaviour was bad behaviour / being naughty and drinking and drugs.

When questioned about whether drugs misuse was of concern in their town or area, 81.1% of respondents said that it was. Breaking this down even further, alcohol was the main drug of concern with 32.5% of people stating this to be the case, followed by heroin at 12.8% and crack cocaine at 11.9%. 60.1% of respondents reported seeing drug and/or alcohol misuse in the area they live. 48.1% reported this being in the form of drunkenness with 37.9% feeling that the individuals concerned were underage.

Results from the Safer Summer consultation found that alcohol related crime was of most concern to younger people within Ipswich at 38% closely followed by vehicle crime at 36.5% and criminal damage at 31.3%. The issues that concern them and their peers most are bullying (54.8%) and smoking (31.4%).

In conclusion, over half of respondents feel safe in the area where they live (tables below)

How safe or unsafe do you feel in the area where you live?

Very safe	Fairly safe	A bit safe	Very unsafe	Not stated
55 (22.6%)	130 (53.5%)	38 (15.6%)	19 (7.8%)	2 (0.8%)

How safe do you feel Ipswich is as a whole?

Very safe	Fairly safe	A bit safe	Very unsafe	Not stated
20 (8.2%)	132 (54.3%)	66 (27.2%)	23 (9.5%)	3 (1.2%)

Other concerns raised were from the business sector – particularly within the town centre. They were heavily affected by crime in the form of shoplifting, abuse of staff and general nuisance. Ipswich partnership's annual business survey highlighted criminal activity to be one of their main concerns. Therefore, business crime will feature in activity/ actions of Safer Ipswich and help Ipswich Partnership with the Business Improvement District bid to make Ipswich a safer and better place to be.

## SECTION 4 – THE PRIORITIES

### Strategic Aims:

The Partnership has agreed four overarching aims for the Strategy. These have been developed in line with the ODPM/Home Office publication: The Safer and Stronger Communities Fund Implementation Guidance, and the National Drug Strategy Performance Management Framework, published by the Home Office.

- 1. To reduce British Crime Survey (BCS) comparator recorded crime by 21% by March 2008<sup>2</sup>.**
- 2. To reduce the number of recorded incidents of anti-social behaviour by 5% by 2008 across Suffolk<sup>3</sup>.**
- 3. To reduce the harm that drugs and alcohol cause to communities<sup>4</sup>.**
- 4. To reduce the number of deliberate fires by 10%, by 2010<sup>5</sup>.**

<sup>2</sup> The Home Office has allocated British Crime Survey comparator crime categories against which this % target will be measured. These are listed in Appendix 1.

<sup>3</sup> Local Public Service Agreement 2 (2005-08)

<sup>4</sup> This is a national aim taken from the National Drug Strategy.

<sup>5</sup> This target has been adapted from the Fire and Rescue Service PSA Target and is taken from page 64 of the ODPM document '*The Fire and Rescue National Framework*'. It comes into effect from April 2005. This target will outlive this strategy document and progress towards this target will therefore be reported to the end of March 2008.

## **Priority Development**

The Ipswich Crime and Disorder and Drug Misuse Reduction Strategy 2005-08 focus on a number of specific priorities. Broad issues were selected using the evidence provided in the local audit; the public then had the opportunity to comment on these and express their views and concerns. This information was then considered by the Partnership alongside the national priorities emerging from central government.

The Partnership has chosen to tackle the strategic priorities by adopting a layered approach. This will help to ensure that priorities that are shared by some or all of the other four Partnerships across the county are approached in a 'joined up' and cost effective manner, avoiding duplication of effort and resources. Shared priorities will be co-ordinated and led by a named agency or initiative at a county level. This will enable the Partnership to focus a greater amount of time and funding on the key local priorities identified by the audit and consultation.

The key local priorities will be a combination of the BCS comparator crimes, against which Strategic Aim 1 will be measured, and issues of local importance that have been identified during the audit and consultation process.

Target key local priority areas will be selected at the beginning of each financial year and specific Annual Key Performance Indicators (AKPIs) will be set (*Appendix 3 – Safer Ipswich Targets*), against which the CDRP's performance will be measured and reported.

Based on local data, and findings from the audit, key local priorities for Safer Ipswich (CDRP) will be:

- Alcohol related violence and nuisance (including underage drinking);
- Anti social behaviour;
- Substance misuse

Other areas that also need attention are perceptions of crime (for example, although burglary crimes were at their lowest in 5 years, the perception was that burglaries of people's homes were high), domestic violence and racial harassment issues – these areas often go un-noticed as they are areas that are seldom discussed and yet have a huge effect on people's lives.

To see what action is being taken to tackle these issues see the Safer Ipswich implementation plans – a flexible working document for partners to work from to achieve the aims and respond to local issues.

## **Drug and Alcohol Misuse:**

The Police Reform Act 2002 extended the statutory duty on 'responsible authorities' to include drug and alcohol within their Crime and Disorder Reduction Strategy. Many unitary authorities chose to merge their Drug and Alcohol Action Team and CDRP, however, in many two-tier authorities, including Suffolk this was not felt to be practical. Instead a plan was put in place to ensure closer working and integration but the DAAT and CDRP's remain separate bodies.

The National Drug Strategy Performance Management Framework (NDSPMF) published by the Home Office in December 2003 outlines specific performance management measures and key performance indicators for measuring the success of the Partnership's strategy for tackling drug misuse. This document also placed a statutory duty on the DAAT to publish an over-arching countywide Drugs Strategy in April 2005.

Following a multi-agency seminar in September 2004, it was decided that to avoid duplication and to ensure effectiveness of interventions the Partnership would concentrate its efforts on delivering part of the 'community element' of the four key themes from the National Drug Strategy, whilst the Suffolk Drug and Alcohol Harm Reduction Strategy 2005-08 would focus on the other three themes (Reducing Supply, Treatment and Harm Reduction and Young People).

Whilst community awareness raising will be the main priority for the Partnership, other local priorities that have been identified by the Substance Misuse Officer will be explored and, if appropriate, developed further during the action planning stage.

## **SECTION 5 – ACTION PLANNING**

### **The Action Planning Process**

Specific objectives for priority areas will be detailed in implementation plans that will be developed during the spring of 2005. Further analysis will be undertaken on the priority areas identified to ensure that resources are allocated to targeted activities which will help the Partnership to achieve their stated aims. This process will be repeated at the beginning of each financial year for the duration of the strategy.

Each action plan will show which of the four strategic aims the plan has been designed to address, the specific objective of the activity including SMART targets, and the baseline position prior to any activity taking place.

The Safer and Stronger Communities Fund funding plans, completed on an annual basis by the Partnership, will be used as a template for the action plans.

## **SECTION 6 – PERFORMANCE MANAGEMENT**

### **Performance Management**

The Partnership recognises the importance of ensuring that effective performance management processes are in place to enable successful monitoring and evaluation of the strategy and associated projects.

Progress made in addressing the four high level strategic aims will be measured, where possible, using iQuanta data published by the Home Office<sup>6</sup>. Data for the alcohol related violence objective will be supplied by Suffolk Constabulary.

The Research and Information Team at Suffolk County Council, on behalf of the Partnership, will monitor the Annual Key Performance Indicators. Quarterly reports will be made available to the RAG and GO-East.

### **Monitoring and Evaluation**

Monitoring and evaluation criteria will be built into the action plan at the project development stage, and agreed by the RAG prior to any funding commitment. Where possible, baseline data will be used to enable progress to be measured. In instances where baseline data is not available, it is expected that Lead Officers for the project will detail alternative appropriate performance measures to enable effective monitoring.

The Lead Officer for the project will have responsibility for feeding back progress against project targets to the RAG on a quarterly basis. These reports will also be made available to GO-East as required. Monitoring will continue for an agreed period following cessation of the project and a final evaluation report will be prepared at the end of this period. This will enable the effect of the project's withdrawal to be measured and inform planning for follow-up action to be taken if required.

Government guidance does not require small scale, short-term, or low cost projects to carry out a formal evaluation of their actions. The cost would outweigh the benefits. However, in instances where

---

<sup>6</sup> iQuanta is a Home Office police performance analysis tool. It produces a range of charts to illustrate current performance at force, BCU and CDRP level. The analysis gives an impression of how particular units compare with their peers, shows up significant change in performance, and tracks progress towards targets. Measurements are analyzed by placing units of Most Similar Families (MSF). Presently families are in groups of 15. Data is produced once month in arrears and provides data ranging across a three month period.

the project is particularly innovative or likely to produce robust findings that can be shared with a wider audience, a full evaluation may be required. In these instances, the RAG would make a decision about the level of monitoring and feedback required.

Projects requesting funding in excess of £10,000 will be required to produce a detailed monitoring and evaluation plan to ensure that the project is outcome driven.

### **Reporting Progress against Drug and Alcohol Misuse**

There is a formal requirement to feedback progress made against drug and alcohol misuse targets to GO-East in a specific format outlined in the Performance Management Framework of the National Drug Strategy. Therefore, to avoid duplication of effort and resources the Partnership will adopt their performance management system for reporting progress in this priority area.

### **Annual Reports**

Formal reports will be prepared at the end of each financial year to inform GO-East about strategic progress. Additionally, press releases and newsletters will be produced at this time to update the local community about project activity and progress towards achieving the strategic targets.

**Appendix 1 – Recorded Crime BCS Comparators**

<b>BCS category</b>	<b>Code</b>	<b>Individual offences included</b>
Vehicle thefts	37.2 48 45 126	<i>Aggravated vehicle taking</i> <i>Theft and unauthorised taking of motor vehicle</i> <i>Theft from a vehicle</i> <i>Vehicle interference and tampering</i>
Burglary	28 29	<i>Burglary in a dwelling</i> <i>Aggravated burglary in a dwelling</i>
Bicycle theft	44	<i>Theft or unauthorised taking of pedal cycle</i>
Theft from person	39	<i>Theft from the person of another</i>
Vandalism (Criminal damage)	56 58A 58B 58C 58D 58E 58F  58G 58H	<i>Arson</i> <i>Criminal damage to a dwelling</i> <i>Criminal damage to building other than a dwelling</i> <i>Criminal damage to a vehicle</i> <i>Other criminal damage</i> <i>Racially/religiously aggravated criminal damage to a dwelling</i> <i>Racially/religiously aggravated criminal damage to a building other than a dwelling</i>  <i>Racially/religiously aggravated criminal damage to a vehicle</i> <i>Racially/religiously aggravated other criminal damage</i>
Common assault	104 105A 105B	<i>Assault on a constable</i> <i>Common Assault</i> <i>Racially/religiously aggravated common assault</i>
Wounding	5 8A 8D	<i>Wounding or other act endangering life</i> <i>Other (less serious) wounding</i> <i>Racially/religiously aggravated other wounding</i>
Robbery	34B	<i>Robbery of personal property</i>

**Appendix 2 – Ward Map of Ipswich**





## Safer Ipswich – Targets 2005 - 2006

- To reduce the number of thefts of vehicles by 7.5% in Ipswich by March 2006 towards an overall target of 15% by March 2008.
- To reduce the number of thefts from vehicles by 10% in Ipswich by March 2006 towards an overall target of 20% by March 2008.
- To reduce the number of vehicle interference offences by 7.5% in Ipswich by March 2006 towards an overall target of 15% by March 2008.
- To increase drug and alcohol awareness/education in the local community to 38 events by March 2006
- To work with up to 8 families and 5 individuals that are common offenders of anti social behaviour by March 2006.
- To reduce the number of domestic burglaries\* by 5% in Ipswich by March 2006 towards an overall target of 10% by March 2008.
- To reduce the number of criminal damage offences\*\* by 12.5% in Ipswich by March 2006 towards an overall target of 25% by March 2008.
- To reduce the number of arson offences♦ by 5% across Suffolk by March 2006.
- 90% of respondents stating that they feel 'very safe' or 'fairly safe' (countywide) in 2006 survey.
- To reduce the number of common assaults by 12.5% in Ipswich by March 2006 towards an overall target of 25% by March 2008.
- To reduce the number of woundings by 10% in Ipswich by March 2006 towards an overall target of 20% by March 2008.
- To reduce the number of personal robberies by 5% in Ipswich by March 2006 towards an overall target of 10% by March 2008.
- (Countywide) Reduce by 3% the number of violence crimes in a public place related to alcohol misuse by March 2006, towards an overall reduction of 10% by March 2008.
- To reduce the rate of repeat offending by 5% to 27.9% across the county by March 2008
- Reduce by 10% the number of domestic violence incidents related to alcohol misuse by March 2008 (countywide)♣.
- To increase the number of reported racial harassment incidents (countywide) by 15% by March 2006.

\*For performance management purposes the following crime classification will be used to monitor progress in this area using iQuanta data: Burglary in a Dwelling (28) and Aggravated burglary in a Dwelling (29).

\*\*For performance management purposes the following crime classification will be used to monitor progress in this area using iQuanta data: Arson (56), and Criminal damage (58A.B.C.D.E.F.G.H).

♦Arson is a sub category of the BCS comparator recorded crime of criminal damage, and will therefore be included in the overall criminal damage data set. For the purposes of performance monitoring the 'deliberate fires' objective Suffolk Constabulary data will be used.

♣ This is a Local Area Agreement target and the responsibility for performance management lies with Suffolk Constabulary. The Constabulary has supplied baseline data.

## **Appendix 4 – Explanation of abbreviations.**

**AKPIs** = Annual Key Performance Indicators

**ASB** = Anti-Social Behaviour

**BCS** = British Crime Survey

**BCU** = Basic Command Unit

**BVPI** = Best Value Performance Indicator

**CDRP** = Crime and Disorder Reduction Partnership

**CJS** = Criminal Justice System

**DAAT** = Drug and Alcohol Action Team

**DV** = Domestic Violence

**GO-East** = Government Office for the East of England

**LAA** = Local Area Agreements

**LSP** = Local Strategic Partnership

**MSF** = Most Similar Families

**NDSPMF** = National Drug Strategy Performance Management Framework

**ODPM** = Office of the Deputy Prime Minister

**OSG** = Officer Steering Group

**PCT** = Primary Care Trusts

**PSA** = Public Service Agreement

**RAG** = Responsible Authorities Group

**SCC** = Suffolk County Council

**SMART** = Specific Measurable Achievable Realistic Targets/Time Specific

**SSCF** = Safer and Stronger Communities Fund

**YOT** = Youth Offending Team