

Creating a



safer
stronger
Suffolk



making our Community safer

CRIME & DISORDER REDUCTION PARTNERSHIP
STRATEGY 2005 - 2008

FOREWORD

By

Patricia O'Brien

Chair of Suffolk Coastal

Crime and Disorder Reduction Partnership

Suffolk is one of the safest counties in England and Suffolk Coastal, one of the safest districts within Suffolk.

It is against this encouraging and positive background that the Suffolk Coastal Crime and Disorder Reduction Partnership has produced a strategy for 2005-2008 that will maintain and improve upon this position.

LIST OF CONTENTS

	Page(s)
<u>Section 1 – Introduction</u>	2-4
• Statement of Purpose	2
• Purpose of Strategy	2
• Partnership Structure	3-4
• Structure of the Strategy	4
<u>Section 2 – A Local and National Overview</u>	4-7
• Links to Local Strategies and Plans	4-5
• National Priorities and Strategies	5-7
<u>Section 3 – Audit Findings</u>	7-12
• The District – An Overview	7-8
• Summary of the Audit Findings	8-9
• Audit Summary Consultation Document	9-10
• Consultation Feedback	10-12
<u>Section 4 – The Priorities</u>	12-13
• Strategic Aims	12
• Priority Development	12-13
• Drug and Alcohol Misuse	13
<u>Section 5 – Action Planning</u>	13
• The Action Planning Process	14
<u>Section 6 – Performance Management</u>	14-15
• Performance Management	14
• Monitoring and Evaluation	14-15
• Reporting Progress Against Drug and Alcohol Misuse	15
• Annual Reports	15
<u>Appendices:</u>	
Appendix 1:	
• Recorded Crime BCS Comparator	16
Appendix 2:	
• Glossary	17

SECTION 1 - INTRODUCTION

Statement of Purpose

The Suffolk Coastal Crime and Disorder Reduction Partnership aims to work together to build a safer, stronger and more secure Suffolk.

Purpose of the Strategy

The Crime and Disorder Act 1998 as amended by the Police Reform Act 2002 places a duty on specific agencies (Suffolk Coastal District Council, Suffolk County Council, Suffolk Constabulary, Suffolk Coastal Primary Care Trust (PCT), Suffolk Police Authority and the Suffolk Fire & Rescue Service) to work together and with other agencies in the community, including the Suffolk Drug Action Team, to address community safety, crime and disorder and substance misuse. This body is known as the Suffolk Coastal Crime and Disorder Reduction Partnership ('the Partnership').

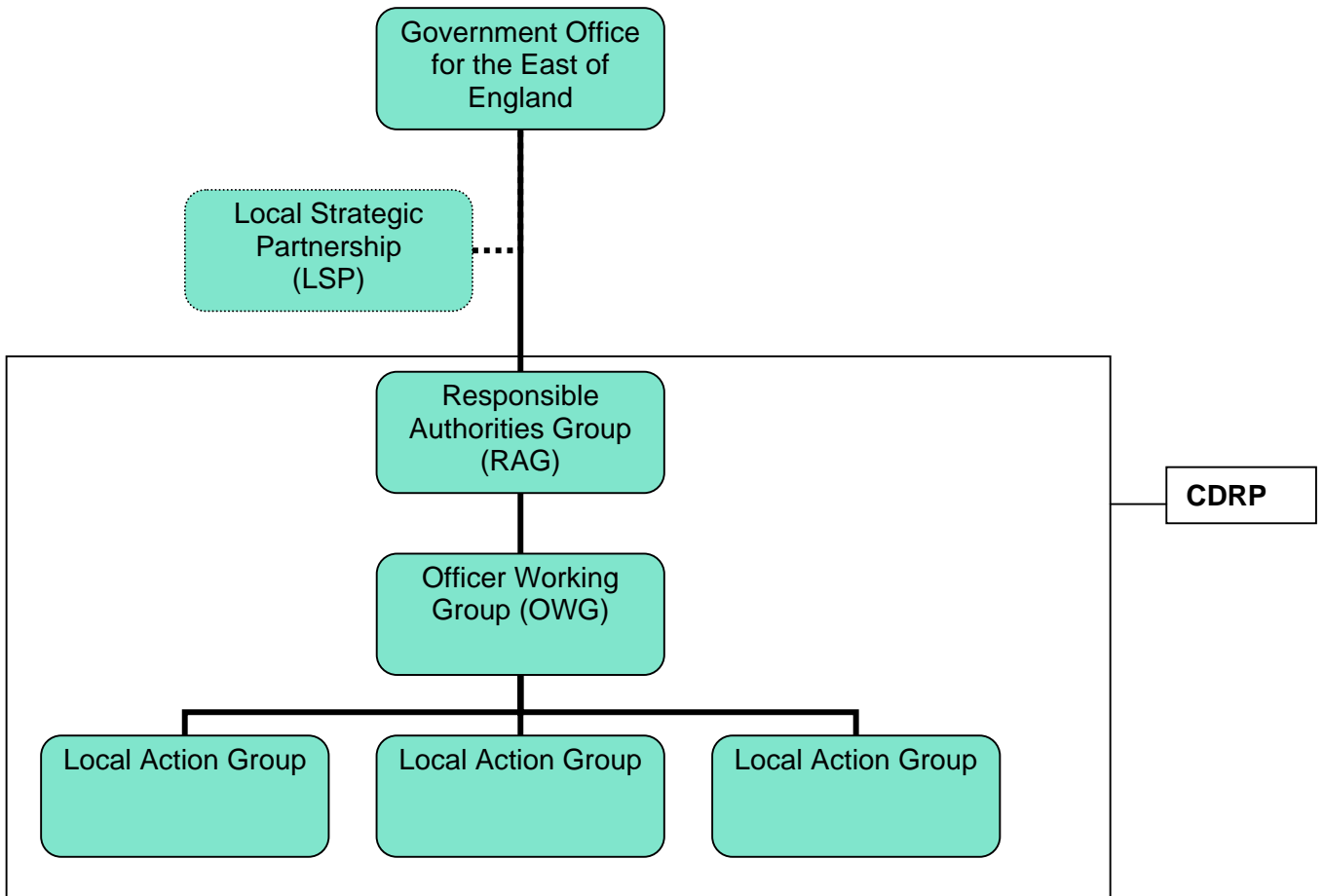
Every three years the Partnership is required to carry out an audit to identify the extent of the problems in the district and develop a strategy to deal with them. An audit of crime, disorder and drug misuse in Suffolk Coastal was carried out during the summer of 2004 using data collected between April 2001 and March 2004. A summary document of the audit findings was then published in the autumn, inviting the community to comment and express their views and concerns.

The following three-year strategy has been written based on the audit findings and taking into account views expressed during the consultation period. There is a statutory requirement for the strategy to include actions to tackle anti-social behaviour and drug and alcohol misuse. More information can be found about these issues in Section 3 – Audit Findings and Section 4 – Priorities.

The strategy sets out the priorities, aims and objectives against which the Partnership's success will be measured. Performance indicators have been set in partnership with the Government Office for the East of England and have taken into account the requirements of the National Drug Strategy Performance Management Framework.

Historically, whilst work has been carried out by the Partnership to tackle drug and alcohol misuse, the strategic response to this issue has been led by the Suffolk Drug Action Team. However, it is widely recognised that there is an intrinsic link between substance misuse and crime, and for this reason this strategy has integrated the two agendas and has been written to complement the countywide Suffolk Drug and Alcohol Harm Reduction Strategy 2005-08 which has been published by the Suffolk Drug Action Team.

Partnership Structure



GO-East - The regional office of central government which brings together into a single operation the varied regional activities of a range of Government departments. The Crime Reduction Team within GO-East monitors and evaluates the work of the Partnership and manages national funding streams.

Local Strategic Partnership - A multi-agency partnership designed to improve communication and co-ordination of plans and strategies across agencies, with the overall aim of improving the quality of life and governance of Suffolk Coastal. Crime is a key theme of the Local Strategic Partnership, and as such they link to the Crime and Disorder Reduction Partnership.

Responsible Authorities Group - The strategic decision-making body, as identified by the Crime and Disorder Act 1998. The Group comprises of members and officers of Suffolk Coastal District Council, Suffolk County Council, Suffolk Constabulary, Suffolk Fire & Rescue Service, Suffolk Coastal Primary Care Trust, Suffolk Drug Action Team and the Suffolk Police Authority.

- The Officer Working Group** - A multi-agency group attended by representatives of the key partners and agencies prescribed by the Crime and Disorder Act 1998 whose purpose is the daily implementation of the Partnership's priorities.
- Local Action Groups** - Thematic or geographically based multi-agency groups with the purpose of implementing the Partnership's action plans and achieving the targets outlined in the Strategy. These groups usually include representatives from statutory and voluntary agencies and members of the local community. Currently, there are four groups, two in Felixstowe, one in Leiston, and one in Woodbridge.

Terms of reference for the Partnership sub-groups are available from the Community Safety Officer at the District Council.

Structure of the Strategy

The strategy document is laid out in six broad sections, each containing various subsections.

- Section 1 includes the introduction and the purpose of the strategy.
- Section 2 provides details of local and national plans and priorities which influence the Partnership's approach to community safety, crime, disorder and drug and alcohol misuse issues within the district.
- Section 3 provides a brief outline of the audit findings and the rationale for selecting the Priorities.
- Section 4 outlines the Priorities.
- Section 5 explains the action planning process that will be adopted to ensure effective steps are taken to address the identified issues and
- Section 6 outlines the Monitoring and Evaluation Process that will be adopted by the Partnership.
- Appendix 1 lists the Home Office British Crime Survey (BCS) Comparator Recorded Crimes
- Appendix 2 is a Glossary of Terms.

SECTION 2 – A LOCAL AND NATIONAL OVERVIEW

Links to Local Strategies and Plans

This strategy has been written to complement other strategies in place across the county relating to crime, disorder and drug and alcohol misuse to ensure a 'joined up' strategic approach to inter-agency working is adopted.

The Crime and Disorder Act 1998 provided local authorities, the police and other key partners with a legal framework to reduce crime and disorder. Within this, Section 17 of the Act requires local authorities, police authorities and other agencies to consider crime and disorder reduction and community safety in the exercise of all duties and activities.

In the spirit of Section 17 of the Crime and Disorder Act 1998, the Partnership is constantly striving to make links with key plans and targets produced within partner agencies to ensure that the impact on community safety, crime, disorder and substance misuse is considered by all officers when writing and updating plans and policies.

As priorities and targets are constantly being reviewed and amended it would be inappropriate to attempt to provide a definitive list. However the following plans and targets have been identified as having key links to this strategy:

Suffolk Coastal District Council Corporate Scorecard
Suffolk Coastal District Council Housing Strategy
Local Strategic Partnership Community Plan
Local Authority Public Service Agreement Targets
PCT Local Delivery Plan
Suffolk Constabulary Policing Plan 2005-08
Suffolk Drug and Alcohol Harm Reduction Strategy 2005-08
Suffolk Fire & Rescue Service Community Fire Safety Plan
Suffolk Youth Justice Plan
Local Area Agreements

National Priorities and Strategies

The following section outlines key legislation and strategies which impact on the work of the Partnership, and influences the priorities outlined in this strategy.

Anti-Social Behaviour Act 2003: The purpose of the Anti-social Behaviour Act is to provide the tools for practitioners and agencies to effectively tackle anti-social behaviour. It contains measures drawn up from across five Government Departments and builds on existing legislation to clarify, streamline and reinforce the powers that are available to practitioners.

For further information on the Act please visit the Home Office website at:
www.homeoffice.gov.uk/crime/antisocialbehaviour/legislation/asbact.html

The Prolific and Other Priority Offenders Strategy: This strategy is designed to tackle the most persistent and prolific offenders committing crime within local communities. It has three complementary components:

- Prevent and Deter – to stop people (overwhelmingly young people) engaging in offending behaviours and graduating into prolific offenders;
- Catch and Convict - actively tackling those who are already prolific offenders; and
- Rehabilitate and Resettle – working with identified prolific offenders to stop their offending by offering a range of supportive interventions. Offenders will be offered the opportunity for rehabilitation or face a very swift return to the courts.

The new strategy is CDRP led, with schemes set up to cover every CDRP in the country.

For further information about the Prolific and Other Priority Offenders Strategy please visit:
www.crimereduction.gov.uk/ppo.htm

National Policing Plan 2005-08: In November 2004, the Home Secretary launched the National Policing Plan for 2005-08. It contains five key priorities:

- “To reduce overall crime – including violent and drug-related crime – in line with the Government’s Public Service Agreements (PSAs)”;
- “To provide a citizen-focused police service which responds to the needs of communities and individuals, especially victims and witnesses, and inspires public confidence in the police, particularly among minority ethnic communities”.
- “To take action with partners to increase sanction detection rates and target prolific and other priority offenders”.
- “To reduce people’s concerns about crime, and anti-social behaviour and disorder”.
- “To combat serious and organised crime, within and across force boundaries”.

For further information about the National Policing Strategy 2005-08 please visit:
www.policereform.gov.uk/docs/national_policing_plan.pdf

The Domestic Violence, Crime and Victims Act 2004: The plans in the Domestic Violence, Crime and Victims Act 2004, will strengthen the rights of victims and witnesses, ensuring they receive the help, support and protection they need. They build on the Government's ongoing reform of the criminal justice system, rebalancing the process in favour of victims and witnesses.

Further information about the Domestic Violence, Crime and Victims Act is available at:
www.crimereduction.gov.uk

PSA Targets: Following the Government's 2004 spending review there are three main PSA targets that are of particular significance to the CDRP. These are:

- PSA 1 – Reduce crime by 15% and further in high crime areas, by 2007-08
- PSA 2 – Reassure the public, reducing the fear of crime and anti-social behaviour, and building confidence in the Criminal Justice System (CJS) without compromising fairness
- PSA 4 – Reduce the harm caused by illegal drugs including substantially increasing the number of drug misusing offenders entering treatment through the CJS.

These complement the Police Authority Best Value Performance Indicator (BVPI) targets, the Local Authority BVPI targets and Local Area Agreements.

Further information about Government PSA targets is available at:
www.treasury.gov.uk/spending_review/spend_sr04/psa/spend_sr04_psaindex.cfm

Further information about Government BVPI targets is available at:
www.odpm.gov.uk/stellent/groups/odpm_localgov/documents/downloadable/odpm_locgov_029580.pdf

National Drug Strategy: Aiming to reduce the harm that drugs cause to society - communities, individuals and their families - the Drug Strategy has four main elements: -

- Young people - preventing today's young people from becoming tomorrow's problematic drug users;
- Reducing supply - reducing the supply of illegal drugs.
- Communities - reducing drug-related crime and its impact on communities;
- Treatment and harm minimisation - reducing drug use and drug-related offending through treatment and support. Reducing drug-related death through harm minimisation.

For further information about the National Drug Strategy visit: www.drugs.gov.uk/NationalStrategy

National Drug Strategy Performance Management Framework (NDSPMF): The National Drug Strategy has a new Performance Management Resource Pack, which embeds key performance indicators for the 4 themes of the National Drug Strategy into the performance management frameworks of relevant government departments.

This framework will be used to measure the Partnership's performance when tackling drug and alcohol misuse.

Further information about the NDSPMF is available at:
www.drugs.gov.uk/ReportsandPublications/NationalStrategy/1075717576/78168-COI-Drugs.pdf

Every Child Matters: 'The Every Child Matters' Green Paper was published for consultation in September 2003. In March 2004, the Government published Every child matters: next steps. The new Children Act 2004 provides the legal framework for the programme of reform. Every Child Matters: Change for Children published in December 2004, brings together all the ways the Government are working towards improved outcomes for children, young people and families into a national framework for 150 local-authority-led change programmes.

Better outcomes depend on the integration of universal services with targeted and more specialized help, and on bringing services together around the needs of the child and family.

Further information about 'Every Child Matters' is available at: www.everychildmatters.gov.uk

Alcohol Harm Reduction Strategy for England: This strategy was introduced by the Government in March 2004 to tackle the growing problem of alcohol abuse in England. It aims to co-ordinate the range of government interventions to prevent, minimize and manage alcohol related harms and to create a single more coherent national strategy. Most importantly, the strategy sets out a new cross-government approach that relies on creating a partnership at both national and local levels between government, the drink industry, local, police and health authorities, and individuals and communities to address alcohol misuse.

Further information about the Alcohol Harm Reduction Strategy is available at: www.strategy.gov.uk

Local Area Agreements: These are the Government's arrangements to build a more flexible and responsive relationship between central government and a locality on the outcomes that need to be achieved at a local level. Central to these proposals is the formation of 'The Safer and Stronger Communities Fund' (SSCF). This merges several existing ODPM and Home Office funding streams that share a number of the closely related aims of this strategy.

Further information about Local Area Agreements and 'The Safer and Stronger Communities Fund' can be found at: www.odpm.gov.uk

SECTION 3 – AUDIT FINDINGS

The District – an Overview

Suffolk Coastal covers an area of 88,938 hectares and is located on the East coast to the north and east of Ipswich, the County town of Suffolk. The District has a population of 116,000 and its principal towns, Felixstowe and Woodbridge, are situated in the south. Kesgrave, Martlesham and Rushmere St Andrew, which are located on the east side of Ipswich, are significant towns/suburban areas. A large part of Suffolk Coastal is rural in character and bisected by a series of small river valleys which broaden into estuaries as they near the coast. Throughout the area are scattered many villages and small towns. Their tranquil, unspoilt quality extends to the surrounding countryside and coastline, much of it designated as an Area of Outstanding Natural Beauty, in recognition of its importance.

Over recent years, the coastal area of Suffolk has experienced significant growth and change, particularly in the larger towns of Felixstowe, one of Europe's busiest ports, Woodbridge, the Ipswich eastern fringe and in the smaller market and coastal towns in the northern part of the district.

Employment in the district is widely spread, with numerous small firms, companies or 'pockets' of employment in villages or the countryside. The only concentrations occur in towns, at Martlesham and at Sizewell Nuclear Power Stations. Elsewhere, agriculture and local services are a primary source of employment. The district council encourages the diversification of rural economy, particularly in the northern part of the district. Tourism is particularly important to the district. It brings in spending power in the form of visitors and has created employment through hotels, restaurants, transport and shops. The trends in unemployment, economic activity and council tax benefit claimants indicate that the district continues to benefit from improving prosperity. The central part of the district (Woodbridge/Martlesham/Kesgrave) enjoys greater prosperity than the south and north, with more deprived wards in the north. Access to services for those with no or limited use of a car is a problem in rural areas.

The district is largely rural in character, with only a limited network of principal roads. The A12 trunk road forms the backbone of this network, running down the centre of the district. In addition, the A14 links Felixstowe with the rest of the county.

Suffolk is one of the safest counties in the UK, and the district of Suffolk Coastal enjoys a low overall crime rate compared to the rest of the county, in addition to a high quality of life.

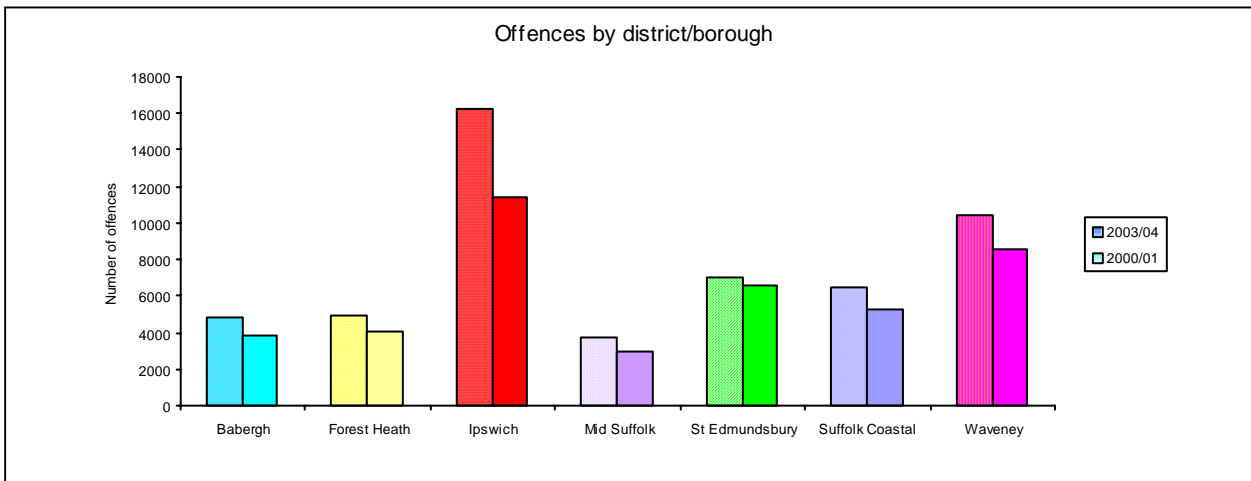
Summary of the Audit Findings

As previously stated, an audit of crime, disorder and drug misuse was carried out during the summer of 2004, analysing data collected from numerous agencies spanning the period April 2001 and March 2004. A copy of the full audit document is available from the Community Safety Officer at the district council. The following paragraphs summarise the key findings.

A postal survey carried out by Suffolk County Council in March 2004 showed that 42% of Suffolk Coastal residents felt 'fairly safe' in the area where they lived, and 54% felt 'very safe'.

The annual cost of crime in Suffolk Coastal for 2003/04 was estimated to be in the region of £13.5 million. These costs include lost or damaged property, time spent, emotional or physical impact, security, insurance premiums, and employer costs. Public sector costs account for about 30% of the overall total cost and include government crime prevention spending, criminal justice system costs, victim services and health services.

The chart below details the total number of offences recorded by Suffolk Districts and Boroughs between April 2000 - March 2001 and April 2003 - March 2004.

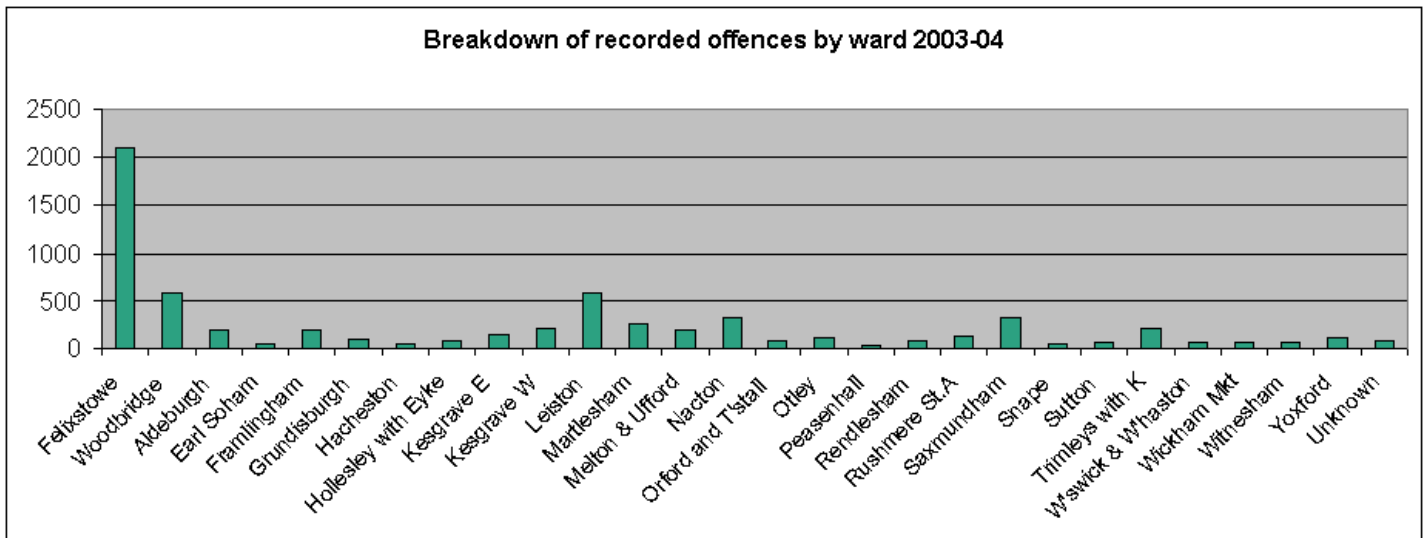


Overall, crime rates in Suffolk Coastal are well below the county average at 56.7 offences per 1000 population compared to 80.3 offences per 1000 population for Suffolk as a whole. Between April 2003 and March 2004, 6527 offences were recorded by Suffolk Constabulary in the Suffolk Coastal District Council area.

Patterns of offending across the district are fairly typical with incidents of violence and disorder occurring more frequently in urban areas and property offences such as vehicle crime and 'other burglary' occurring in more rural locations.

For performance management purposes the Home Office compares areas from across England and Wales that have a similar socio-economic makeup. It also ranks CDRPs to enable comparison between all 376 areas across England and Wales, Suffolk Coastal ranked 329th for rate and volume of BCS comparator recorded crime¹ during 2003-04, making them one of the safest areas in the country.

¹ A list of the BCS comparator crimes on which this ranking was calculated are attached at Appendix 1.



The graph below shows the total number of crimes committed in Suffolk Coastal wards. Felixstowe and Woodbridge with the largest populated areas have the highest recorded number of offences because their wards have been combined.

Audit Summary Consultation Document

During the autumn of 2004, efforts were made to consult with the local community about the audit findings. A summary document was produced which highlighted the key issues identified by the audit and views were sought about the importance of these issues to local people and businesses. The following information formed the basis of this document.

Issues were identified which consultees were asked to rank in order of importance:

(Figures appearing in *italics* relate to the actual number of recorded offences.

BURGLARY (743)

Of Peoples Homes:

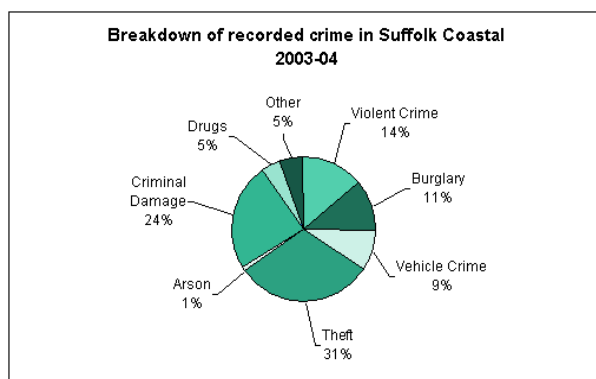
There were 227 dwelling burglaries in Suffolk Coastal during 2003/04. This was well below the county average of 3.6 offences per 1000 population, at 2.0. Four wards recorded rates above the county

average. These were: Grundisburgh (4.8, 11), Felixstowe SE (4.5, 21), Felixstowe E (4.3, 17) and Leiston (3.7, 23).

Of Sheds, Garages and Other Buildings:

There were 516 'other' burglaries in the district last year. These included sheds, garages, outbuildings, and business premises. Whilst the overall rate was lower than the county average of 6.0 offences per 1000 population at 4.5, three wards recorded rates more than one and a half times higher than the county average:

Seckford (11.1, 20), Nacton (10.7, 45) and Otley (9.1, 20).



The pie chart above shows the breakdown of all crime across Suffolk Coastal during 2003-04. Following detailed analysis, arson, theft and other offences were not highlighted as issues of concern and therefore do not feature in the following section.

CRIMINAL DAMAGE (1588)

There were 1588 criminal damages offences recorded during 2003/04. The rate of criminal damage in Suffolk Coastal was generally lower than the Suffolk average (18.3 offences per 1000 population). However, there were some wards where the rate of offences was significantly higher. These wards were Seckford (54.4, 98), Felixstowe S (48.0, 211), Saxmundham (28.3, 113), Leiston (24.7, 153), Felixstowe SE (22.6, 106), Kesgrave W (21.4, 75), and Kyson (21.0, 42).

CYCLE CRIME (271)

The rate of cycle theft in Suffolk Coastal last year was slightly above the county average of 2.2 offences per 1000 population at 2.4.

Five wards experienced rates more than twice the county average. These were: Felixstowe S (8.2, 36), Aldeburgh (8.0, 28), Nacton (6.9, 29), Felixstowe SE (6.2, 29), and Felixstowe N (4.9, 21).

DISORDER (1914)

Public disorder events tend to peak in line with periods of activity associated with the nighttime economy (e.g. pub/nightclub closing times). Unsurprisingly, most events are recorded in urban areas, and more events are recorded during the evening and at weekends.

There were a total of 1914 disorder incidents recorded in the district during 2003/04.

Within the disorder category the most commonly recorded incident in Suffolk Coastal was 'Disturbance in a Public Place'. The district average for this type of incident was 10.7 offences per 1000 population. Wards with higher than average rates were Seckford (27.2, 49), Felixstowe S (25.0, 110), Kesgrave W (13.7, 48), Leiston (13.5, 84), and Saxmundham (13.0, 52).

DOMESTIC VIOLENCE (432)

Of the total number of domestic violence incidents reported to Suffolk Police during 2003/2004, 9% were in Suffolk Coastal. This equated to 432 incidents.

DRUGS (298)

There were 298 drugs offences recorded in Suffolk Coastal by Suffolk Police during 2003/2004. Of these offences 29 were classed as 'serious drugs offences' and the remaining 269 offences were recorded as 'other drug offences'.

Of these offences 90 were recorded in Felixstowe, 38 in Woodbridge and 38 were recorded in Leiston.

RACIAL HARASSMENT (45)

There were 45 racist incidents recorded in Suffolk Coastal during 2003/04. This equated to approximately 9% of all racist incidents countywide. The 2001 Census showed that the proportion of people from black and minority ethnic groups living in the district was below the county rate (2.8%) at 1.9%.

A county breakdown of racist incidents for 2003/04 showed that 32% were harassment, 26% abuse, 22% assault, 10% criminal damage and 10% were other types of offences.

The incident rate in Suffolk Coastal has risen from 16.5 offences per 100,000 population in 1998/99 to 39.1 offences per 100,000 population in 2003/04.

The Suffolk Racial Harassment Initiative (RHI) encourages the reporting of incidents which may account for the significant increase in incidents over recent years.

VEHICLE CRIME (581)

Theft of Motor Vehicle

Last year in Suffolk Coastal 138 vehicles were stolen. The district had the joint lowest rate of thefts in the county. However, some wards had rates higher than the county average of 2.3 thefts per 1000 population. These were: Seckford (3.9, 7), Felixstowe W (3.1, 21) and Hollesley with Eyke (3.0, 7).

Theft from Motor Vehicle

During 2003/2004 there were 443 thefts from motor vehicles in the district. The average rate for 'thefts from motor vehicle' across Suffolk was 6.5 offences per 1000 population. The wards in Suffolk Coastal which exceeded this rate were: Otley (16.8, 37), Nacton (11.9, 50) and Orford & Tunstall (10.0, 19).

VIOLENT CRIME (932)

There were 932 violent offences in the district last year. These included 29 robberies and 53 sexual offences.

The violent crime rate in Suffolk Coastal was well below the Suffolk average (14.0 offences per 1000 population) at 8.2. However, there were four wards with rates higher than the Suffolk average. These were Felixstowe S (33.4, 147), Leiston (20.3, 126), Seckford (16.7, 30) and Saxmundham (14.8, 59).

Feedback from Audit Consultation Summary Document:

A short summary document outlining the audit findings was circulated to 500 individuals, groups and agencies within Suffolk Coastal during the autumn of 2004, and published in the district council magazine 'Coastline'. This included a short questionnaire that asked respondents to rank crime and disorder issues in order of importance to them, and asked about their experience of crime. To date, 418 replies have been received and the findings are as follows.

33.7% of respondents ranked violent crime as their area of greatest concern, and 39.2% felt that domestic burglary was the most important issue for Suffolk Coastal CDRP to address. These were followed by public disorder/nuisance, drugs offences and criminal damage.

Respondents were least concerned about theft, cycle crime and vehicle crime.

91.8% of respondents felt 'very safe' or 'fairly safe' in the area where they live. In areas where there are CCTV cameras 81.1% of respondents felt 'very safe' or 'fairly safe'.

92.6% of respondents felt that, as a whole, Suffolk Coastal was a felt 'very safe' or 'fairly safe' place.

When asked to list two types of behaviour that they considered to be anti-social the most frequently cited response was swearing/intimidation/loutish behaviour (47.6%) followed by damage to property/graffiti/vandalism (25.4%).

28.0% of respondents had been the victim of crime or anti-social behaviour during the previous 12 months, with 65.0% of incidents being reported to the Police.

53.8% felt that drug misuse was a concern in the town or village where they lived, with most respondents believing alcohol (80%) and cannabis (30%) to be the biggest issues.

60.0% of respondents had seen signs of drug/alcohol misuse in their area, with the majority citing drunkenness (70%), or underage drinking (57.8%), as the behaviour witnessed.

Responses were received from people aged between 16 and 75 with the greatest number of respondents being between the ages of 46 and 65. The gender split was fairly even.

Schools Consultation Exercise

100 secondary school pupils were given the same questionnaire to complete. The findings were as follows:

27.7% of respondents ranked violent crime as their area of greatest concern, and 21.8% felt that domestic burglary was the most important issue for Suffolk Coastal CDRP to address. These were followed by racial harassment, domestic violence, and drugs offences.

Respondents were least concerned about cycle crime and public disorder/nuisance.

94.1% of respondents felt 'very safe' or 'fairly safe' in the area where they live. In areas where there are CCTV cameras 64.4% of respondents felt very safe' or 'fairly safe'.

73.2% of respondents felt that, as a whole, Suffolk Coastal was a felt 'very safe' or 'fairly safe' place.

When asked to list two types of behaviour that they considered to be anti-social the most frequently cited response was violence (21.8%) followed by drunkenness (20.8%).

14.9 respondents had been the victim of crime or anti-social behaviour during the previous 12 months, with 46.7 incidents being reported to the Police.

31.7% felt that drug misuse was a concern in the town or village where they lived, with most respondents believing alcohol (81.3%) and cannabis (37.5%) to be the biggest issues.

55.4% of respondents had seen signs of drug/alcohol misuse in their area, with the majority citing drunkenness (69.6%), or underage drinking (53.6%), as the behaviour witnessed.

91.1% of respondents stated their gender. 51.5% of respondents were male and 39.6% were female.

Partnerships Consultation

In October 2004, a joint consultation event was held at Leiston Abbey with Waveney CDRP. 65 delegates were in attendance from local statutory and voluntary agencies.

37% of attendees lived in the Suffolk Coastal district, 40% were female and 78% were aged over 40. When asked questions relating to national crime levels, the criminal justice system and victimisation, the majority of respondents answered correctly, showing a good understanding of the national picture.

55% of respondents stated that they felt 'very safe' in the area where they lived, and 38% felt 'fairly safe'. In areas where there are CCTV cameras 32% felt 'very safe' and 51% felt 'fairly safe'. 71% felt that Suffolk, as a whole, was 'very safe'.

48% had been the victim of crime or anti-social behaviour in the past 12 months, but only 27% had reported the incident to the Police.

Although crime has fallen slightly over the past year, 41% thought that it had risen slightly.

Most respondents stated that they received information about crime and disorder via newspapers, published statistics, and the radio/television.

73% of respondents were 'very concerned' (34%) or 'fairly concerned' (39%) about drug and alcohol abuse in the area where they lived. Substances of greatest concern were alcohol (64%) and cocaine/crack (21%). 89% of attendees had witnessed drunkenness, alcohol-related disorder or under-age drinking in their area.

90% of attendees believed that there would be value in the Partnership holding regular public consultation events, with 50% requesting annual events and 40% six-monthly consultation events.

SECTION 4 – THE PRIORITIES

Strategic Aims:

The Partnership has agreed four aims for the Strategy. These have been developed in line with the ODPM/Home Office publication: The Safer and Stronger Communities Fund Implementation Guidance, and the National Drug Strategy Performance Management Framework, published by the Home Office.

- 1. To reduce British Crime Survey (BCS) comparator recorded crime by 12.5%² by March 2008.**
- 2. To reduce the number of recorded incidents of anti-social behaviour by 5% by 2008 across Suffolk³.**
- 3. To reduce the harm that drugs and alcohol cause to communities⁴.**
- 4. To reduce the number of deliberate fires by 10%, by 2010⁵.**

Priority Development

The Suffolk Coastal Crime and Disorder, Drug and Alcohol Misuse Reduction Strategy 2005-08 focuses on a number of specific priorities. Broad issues were selected using the evidence provided in

² The Home Office has allocated British Crime Survey comparator crime categories against which this % target will be measured. These are listed in Appendix 1.

³ Local Public Service Agreement 2 (2005-08)

⁴ This is a national aim taken from the National Drug Strategy.

⁵ This target has been adapted from the Fire and Rescue Service PSA Target and is taken from page 64 of the ODPM document '**The Fire and Rescue National Framework**'. It comes into effect from April 2005. This target will outlive this strategy document and progress towards this target will therefore be reported to the end of March 2008.

the local audit; the public then had the opportunity to comment on these and express their views and concerns. This information was then considered by the Partnership alongside the national priorities emerging from central government.

The Partnership has chosen to tackle the strategic priorities by adopting a layered approach. This will help to ensure that priorities that are shared by some or all of the other four Partnerships across the county are approached in a 'joined up' and cost effective manner, avoiding duplication of effort and resources. Shared priorities will be co-ordinated and led by a named agency or initiative at a county level. This will enable the Partnership to focus a greater amount of time and funding on the key local priorities identified by the audit and consultation.

The key local priorities will be a combination of the BCS comparator crimes, against which Strategic Aim 1 will be measured, and issues of local importance which have been identified by the audit and consultation process.

The Local Priority Areas are:-

- Anti-Social Behaviour
- Violent Crime
- Domestic Burglary
- Criminal Damage
- Drug and Alcohol Misuse
- Cycle Crime

The Shared Priority Areas are:-

- Fear of Crime
- Domestic Violence
- Racial Harassment
- Vehicle Crime
- Prolific and Persistent Offenders
- Section 17 Crime and Disorder Act
- Data Collection

Priority areas will be reviewed each financial year and specific Annual Key Performance Indicators (AKPIs) will be set, against which the CDRP's performance will be measured and reported.

Substance Misuse:

The Police Reform Act 2002 extended the statutory duty on 'responsible authorities' to include drug and alcohol within their Crime and Disorder Reduction Strategy. Many unitary authorities chose to merge their Drug Action Team and CDRP, however, in many two-tier authorities, including Suffolk this was not felt to be practical. Instead a plan was put in place to ensure closer working and integration but the DAT and CDRPs remain separate bodies.

The National Drug Strategy Performance Management Framework (NDSPMF) published by the Home Office in December 2003 outlines specific performance management measures and key performance indicators for measuring the success of the Partnership's strategy for tackling drug misuse. This document also placed a statutory duty on the Drug Action Team to publish an over-arching countywide Drugs Strategy in April 2005.

Following a multi-agency seminar in September 2004, it was decided that to avoid duplication and to ensure effectiveness of interventions the Partnership would concentrate its efforts on delivering part of the 'community element' of the four key themes from the National Drug Strategy, whilst the Suffolk Drug and Alcohol Harm Reduction Strategy 2005-08 would focus on the other three themes (Reducing Supply, Treatment and Harm Reduction and Young People).

SECTION 5 – ACTION PLANNING

that have been identified by the Substance Misuse Worker will be explored and, if appropriate, developed further during the action planning stage.

The Action Planning Process

Specific objectives for priority areas will be detailed in implementation plans which will be developed during the Spring of 2005. Further analysis will be undertaken during the lifetime of the Strategy on the priorities and other areas identified to ensure that resources are allocated to targeted activities which will help the Partnership to achieve their stated aims. This process will be reviewed at the beginning of each financial year for the duration of the strategy.

Each action plan will show which of the four strategic aims the plan has been designed to address, the specific objective of the activity including SMART targets, and the baseline position prior to any activity taking place.

The Safer and Stronger Communities Fund funding plans, completed on an annual basis by the Partnership, will be used as a template for the action plans.

SECTION 6 – PERFORMANCE MANAGEMENT

The Partnership recognises the importance of ensuring that effective performance management processes are in place to enable successful monitoring and evaluation of the strategy and associated projects.

Progress made in addressing the four strategic aims will be measured, where possible, using iQuanta data published by the Home Office⁶. Data for the alcohol related violence objective will be supplied by Suffolk Constabulary.

The Annual Key Performance Indicators will be monitored by the Research and Information Team at Suffolk County Council on behalf of the Partnership. Quarterly reports will be made available to the RAG and GO-East.

Monitoring and Evaluation

Monitoring and evaluation criteria will be built into the action plan at the project development stage, and agreed by the RAG prior to any funding commitment. Where possible, baseline data will be used to enable progress to be measured. In instances where baseline data is not available, it is expected that Lead Officers for the project will detail alternative appropriate performance measures to enable effective monitoring through the Officer Working Group.

The Lead Officer for the project will have responsibility for feeding back progress against project targets to the RAG on a quarterly basis. These reports will also be made available to GO-East as required. Monitoring will continue for an agreed period following cessation of the project and a final evaluation report will be prepared at the end of this period. This will enable the effect of the project's withdrawal to be measured and inform planning for follow-up action to be taken if required.

⁶ iQuanta is a Home Office police performance analysis tool. It produces a range of charts to illustrate current performance at force, BCU and CDRP level. The analysis gives an impression of how particular units compare with their peers, shows up significant change in performance, and tracks progress towards targets. Measurements are analyzed by placing units of Most Similar Families (MSF). Presently families are in groups of 15. Data is produced once month in arrears and provides data ranging across a three month period.

Government guidance does not require small scale, short-term, or low cost projects to carry out a formal evaluation of their actions. The cost would outweigh the benefits. However, in instances where the project is particularly innovative or likely to produce robust findings that can be shared with a wider audience, a full evaluation may be required. In these instances, the RAG would make a decision about the level of monitoring and feedback required.

Projects requesting funding in excess of £10,000 will be required to produce a detailed monitoring and evaluation plan to ensure that the project is outcome driven.

All action plans will be expected to show a clear exit strategy and outline any risks associated with the project. Lead Officers will be expected to demonstrate a clear management strategy for monitoring the risks.

Reporting Progress against Substance Misuse

There is a formal requirement to feedback progress made against drug and alcohol misuse targets to GO-East in a specific format outlined in the Performance Management Framework of the National Drug Strategy. Therefore, to avoid duplication of effort and resources the Partnership will adopt their performance management system for reporting progress in this priority area.

Annual Reports

Formal reports will be prepared at the end of each financial year to inform GO-East about strategic progress. Additionally, press releases and newsletters will be produced at this time to update the local community about project activity and progress towards achieving the strategic targets.

Appendix 1 – Recorded Crime BCS Comparators

BCS category	Code	Individual offences included
Vehicle thefts	37.2	<i>Aggravated vehicle taking</i>
	48	<i>Theft and unauthorised taking of motor vehicle</i>
	45	<i>Theft from a vehicle</i>
	126	<i>Vehicle interference and tampering</i>
Burglary	28	<i>Burglary in a dwelling</i>
	29	<i>Aggravated burglary in a dwelling</i>
Bicycle theft	44	<i>Theft or unauthorised taking of pedal cycle</i>
Theft from person	39	<i>Theft from the person of another</i>
Vandalism (Criminal damage)	56	<i>Arson</i>
	58A	<i>Criminal damage to a dwelling</i>
	58B	<i>Criminal damage to building other than a dwelling</i>
	58C	<i>Criminal damage to a vehicle</i>
	58D	<i>Other criminal damage</i>
	58E	<i>Racially/religiously aggravated criminal damage to a dwelling</i>
	58F	<i>Racially/religiously aggravated criminal damage to a building other than a dwelling</i>
	58G	<i>Racially/religiously aggravated criminal damage to a vehicle</i>
58H	<i>Racially/religiously aggravated other criminal damage</i>	
Common assault	104	<i>Assault on a constable</i>
	105A	<i>Common Assault</i>
	105B	<i>Racially/religiously aggravated common assault</i>
Wounding	5	<i>Wounding or other act endangering life</i>
	8A	<i>Other (less serious) wounding</i>
	8D	<i>Racially/religiously aggravated other wounding</i>
Robbery	34B	<i>Robbery of personal property</i>

GLOSSARY

BVPI

Best Value Performance Indicator

Sanction Detection

Defined as those crimes for which an offender has been: charged, summonsed, cautioned or for which the offender has asked for the offence to be taken into consideration at court (regardless of whether the offence was previously recorded). It only applies to recorded offences. Officially the number of sanction detections includes Fixed Penalty Notices.



NATIONAL PROBATION SERVICE
for England and Wales
Suffolk



Suffolk East
Primary Care Trust



GOVERNMENT OFFICE
FOR THE EAST OF ENGLAND



Guy Richardson
Community Safety Officer
Suffolk Coastal District Council
Melton Hill
Woodbridge
Suffolk
IP12 1AU
Tel: 01394-444322

