



Target Monitoring and Performance Report

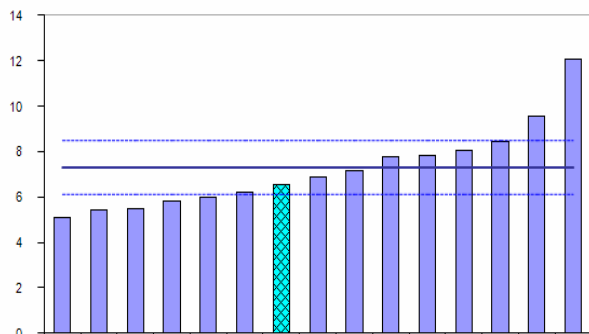
Suffolk Coastal CSP

2007 - 2008

BRITISH CRIME SURVEY COMPARATOR OFFENCES

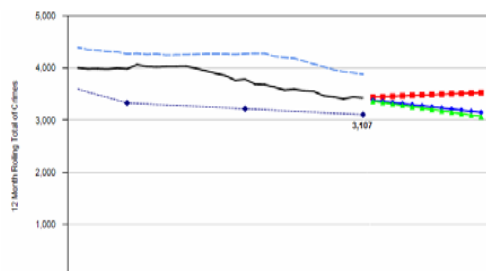
Objective	Baseline	2006-07 actual & effect on target	Quarter 1 Apr-Jun 07-08	Quarter 2 July-Sept 07-08	6 months Apr-Sept 07-08	Quarter 3 Oct-Dec 07-08	9 months Apr-Dec 07-08	Quarter 4 Jan-Mar 07-08	Full year Apr-Mar 07-08
Reduce BCS offences by 12.5% (450 offences) by March 2008 to 3107 compared to baseline.	3555 offences 2003-04	2006/07: 3784 offences 17.9% reduction (677 offences) now to be achieved in 1 year.	Qtrly target 777 967 offences 190 ↑ target 153 ↓ qtr1 06-07	Qtrly target 777 909 offences 132 ↑ target 65 ↓ qtr2 06-07	6mth target 1554 1876 offences 322 ↑ target 218 ↓ 6mth 06-07	Qtrly target 777 752 offences 25 ↓ target 123 ↓ qtr 3 06-07	9mth target 2331 2628 offences 297 ↑ target 341 ↓ 9mth 06-07	Qtrly target 776 798 offences 22 ↑ target 17 ↓ qtr4 06-07	Year target 3107 3426 offences 319 ↑ target 358 ↓ 12mth 06-07

BCS Comparator: January – March 2008



The rate of BCS comparator offences in Suffolk Coastal has risen slightly to 6.5 crimes per 1000 residents, and is now only just below the Most Similar Family average rate of 7.3. Suffolk Coastal has risen from fifth to seventh lowest in the family group.

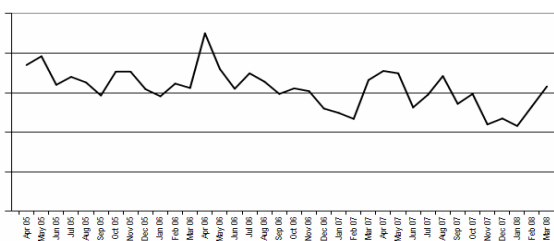
BCS Comparator: October 2005 – March 2008



RELATED INFORMATION:

PSA1 ACHIEVEMENT: Suffolk Coastal CSP has achieved a 4% reduction in BCS Comparator Crime over the 3 year period April 2005 – March 2008.

BCS Comparator: April 2005 – March 2008

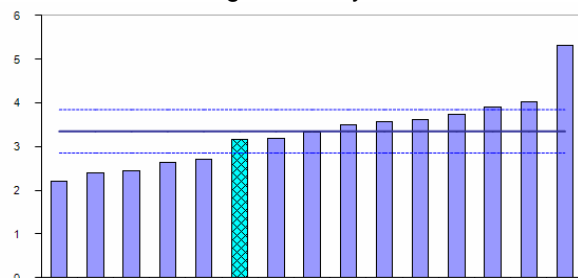


— Actuals Trends Based on Last: —●— 3 data points —●— 6 data points —▲— 12 data points — MSF ---◆--- Target

CRIMINAL DAMAGE AND ARSON

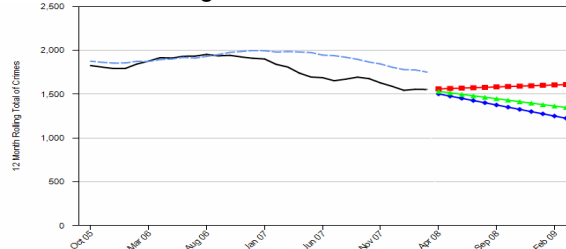
Objective	Baseline	2006-07 actual & effect on target	Quarter 1 Apr-Jun 07-08	Quarter 2 July-Sept 07-08	6 months Apr-Sept 07-08	Quarter 3 Oct-Dec 07-08	9 months Apr-Dec 07-08	Quarter 4 Jan-Mar 07-08	Full year Apr-Mar 07-08
Reduce criminal damage by 10% (164 offences) by March 2008 to 1474 compared to baseline.	1638 offences 2003-04	2006/07: 1809 offences 18.5% reduction (335 offences) now to be achieved in 1 year.	Qtrly target 369 419 offences 50 ↑ target 121 ↓ qtr1 06-07	Qtrly target 368 405 offences 37 ↑ target 6 ↑ qtr2 06-07	6mth target 737 824 offences 87 ↑ target 115 ↓ 6mth 06-07	Qtrly target 369 344 offences 25 ↓ target 105 ↓ qtr 3 06-07	9mth target 1106 1168 offences 62 ↑ target 220 ↓ 9mth 06-07	Qtrly target 368 385 offences 17 ↑ target 36 ↓ qtr4 06-07	Year target 1474 1553 offences 79 ↑ target 256 ↓ 12mth 06-07
Reduce deliberate fires by 10% (71 fires) across Suffolk by 2010 to 634 . Property+ vehicle fires (excl. derelict vehicles)	705 deliberate fires 2001-02 (ODPM baseline)	2006/07: 515 deliberate fires 0% reduction (0 fires) now to be achieved in 1 year.	Qtrly target 159 135 offences 24 ↓ target 5 ↑ qtr1 06-07	Qtrly target 159 126 offences 33 ↓ target 31 ↓ qtr2 06-07	Qtrly target 318 261 offences 57 ↓ target 26 ↓ 6mth 06-07	Qtrly target 158 115 offences 43 ↓ target 9 ↑ qtr3 06-07	9mth target 476 376 offences 100 ↓ target 17 ↓ 9mth 06-07	Qtrly target 158 96 offences 62 ↓ target 26 ↓ qtr4 06-07	Year target 634 472 offences 162 ↓ target 43 ↓ 12mth 06-07

Criminal Damage: January – March 2008

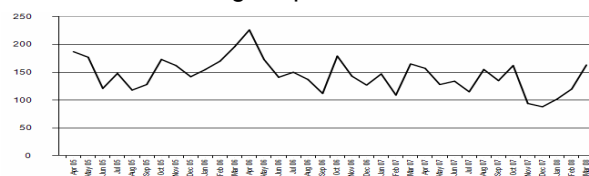


The rate of criminal damage in Suffolk Coastal has risen to 3.1 crimes per 1000 residents, and is now just slightly below the Most Similar Family average of 3.4. Suffolk Coastal has risen from third to sixth lowest in the group.

Criminal Damage: October 2005 – March 2008



Criminal Damage: April 2005 – March 2008



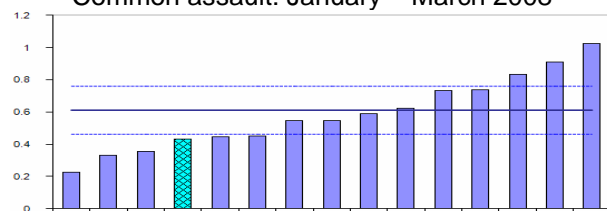
RELATED INFORMATION:

PSA1 ACHIEVEMENT: Suffolk Coastal CSP has achieved a 5% reduction in Criminal Damage over the 3 year period April 2005 – March 2008.

VIOLENT CRIME: COMMON ASSAULT & WOUNDINGS

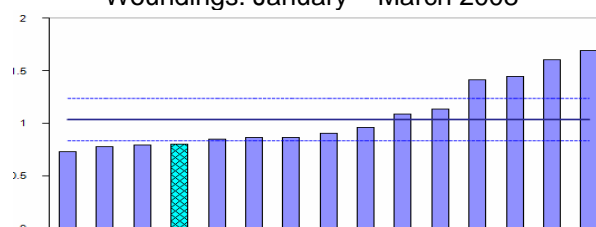
Objective	Baseline	2006-07 actual & effect on target	Quarter 1 Apr-Jun 07-08	Quarter 2 July-Sept 07-08	6 months Apr-Sept 07-08	Quarter 3 Oct-Dec 07-08	9 months Apr-Dec 07-08	Quarter 4 Jan-Mar 07-08	Full year Apr-Mar 07-08
Reduce common assault by 4% (12 offences) by March 2008 to 289 compared to baseline.	301 offences 2003-04	2006/07: 276 offences 0% reduction (0 offences) now to be achieved in 1 year.	Qtrly target 73 84 offences 11 ↑ target 1 ↓ qtr1 06-07	Qtrly target 72 66 offences 6 ↓ target 6 ↓ qtr2 06-07	6mth target 145 150 offences 5 ↑ target 7 ↓ 6mth 06-07	Qtrly target 72 49 offences 23 ↓ target 1 ↓ qtr 3 06-07	9mth target 217 199 offences 18 ↓ target 8 ↓ 9mth 06-07	Qtrly target 72 53 offences 19 ↓ target 16 ↓ qtr4 06-07	Year target 289 252 offences 37 ↓ target 24 ↓ 12mth 06-07
Reduce woundings by 4% (16 offences) by March 2008 to 383 compared to baseline.	399 offences 2003-04	2006/07: 483 offences 20.7% reduction (100 offences) now to be achieved in 1 year.	Qtrly target 96 119 offences 23 ↑ target 25 ↓ qtr1 06-07	Qtrly target 96 126 offences 30 ↑ target 3 ↓ qtr2 06-07	6mth target 192 245 offences 53 ↑ target 28 ↓ 6mth 06-07	Qtrly target 96 105 offences 9 ↑ target 22 ↓ qtr 3 06-07	9mth target 288 350 offences 62 ↑ target 50 ↓ 9mth 06-07	Qtrly target 95 98 offences 3 ↑ target 15 ↑ qtr4 06-07	Year target 383 448 offences 65 ↑ target 35 ↓ 12mth 06-07

Common assault: January – March 2008



The rate of common assault in Suffolk Coastal, at 0.4 crimes per 1000 residents, is now fourth lowest in the Most Similar Family group, significantly below the average of 0.6.

Woundings: January – March 2008

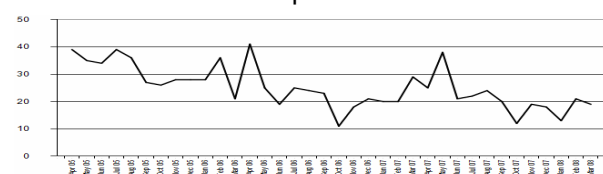


The rate of woundings in Suffolk Coastal has fallen to 0.8 crime per 1000 remaining however it has risen to fourth lowest in the Most Similar Family, which has an average rate of 1.

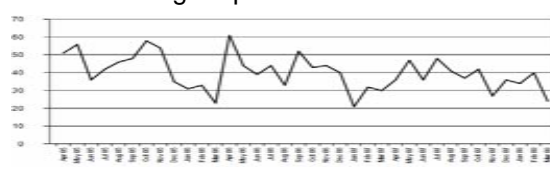
RELATED INFORMATION:

PSA1 ACHIEVEMENT: Suffolk Coastal CSP has achieved a 16% reduction in Common Assault over the 3 year period April 2005 – March 2008. However Wounding has increased by 12% in the same period.

Common assault: April 2005 – March 2008



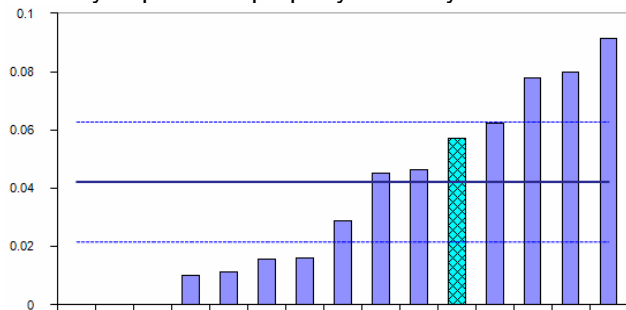
Woundings: April 2005 – March 2008



VIOLENT CRIME: ROBBERY OF PERSONAL PROPERTY & VIOLENCE IN A PUBLIC PLACE RELATED TO ALCOHOL

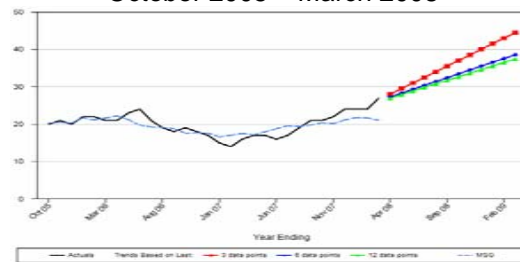
Objective	Baseline	2006-07 actual & effect on target	Quarter 1 Apr-Jun 07-08	Quarter 2 July-Sept 07-08	6 months Apr-Sept 07-08	Quarter 3 Oct-Dec 07-08	9 months Apr-Dec 07-08	Quarter 4 Jan-Mar 07-08	Full year Apr-Mar 07-08
Reduce robbery of personal property by 15% (3 offences) by March 2008 to 17 compared to baseline.	20 offences 2003-04	2006/07: 16 offences 0% reduction (0 offences) now to be achieved in 1 year.	Qtrly target 5 9 offences 4 ↑ target same as qtr1 06-07	Qtrly target 4 8 offences 4 ↑ target 5 ↑ qtr2 06-07	6mth target 9 17 offences 8 ↑ target 5 ↑ 6mth 06-07	Qtrly target 4 3 offences 1 ↓ target 3 ↑ qtr 3 06-07	9mth target 13 20 offences 7 ↑ target 8 ↑ 9mth 06-07	Qtrly target 4 7 offences 3 ↑ target 3 ↑ qtr4 06-07	Year target 17 27 offences 10 ↑ target 11 ↑ 12mth 06-07
Reduce VIAPP related to alcohol by 10% (288 offences) across Suffolk by March 2008 to 2592 compared to baseline.	2880 offences 2004-05	2006/07: 3562 offences 27.2% reduction (970 offences) now to be achieved in 1 year.	Qtrly target 609 887 offences 278 ↑ target 38 ↑ qtr1 06-07	Qtrly target 687 1086 offences 399 ↑ target 6 ↓ qtr2 06-07	6mth target 1296 1973 offences 677 ↑ target 32 ↑ 6 mth 06-07	Qtrly target 736 837 offences 101 ↑ target 125 ↓ qtr3 06-07	9mth target 2032 2810 offences 778 ↑ target 93 ↓ 9mth 06-07	Qtrly target 560 943 offences 383 ↑ target 284 ↑ qtr4 06-07	Year target 2592 3753 offences 1161 ↑ target 191 ↑ 12mth 06-07

Robbery of personal property: January – March 2008

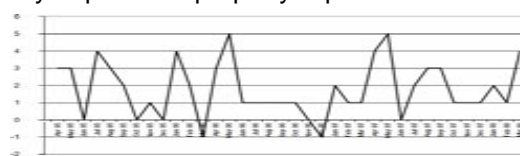


The rate of robbery of personal property in Suffolk Coastal is 0.05 crimes per 1000 residents, below the Most Similar Family average rate of 0.04. Suffolk Coastal has risen from eighth lowest to fifth highest in the most similar family group.

Robbery of personal property: October 2005 – March 2008



Robbery of personal property: April 2005 – March 2008



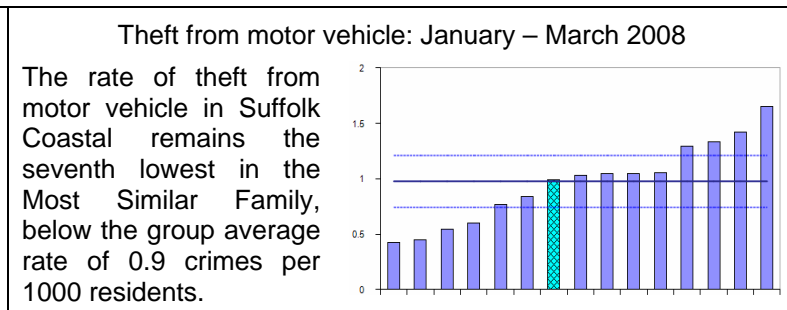
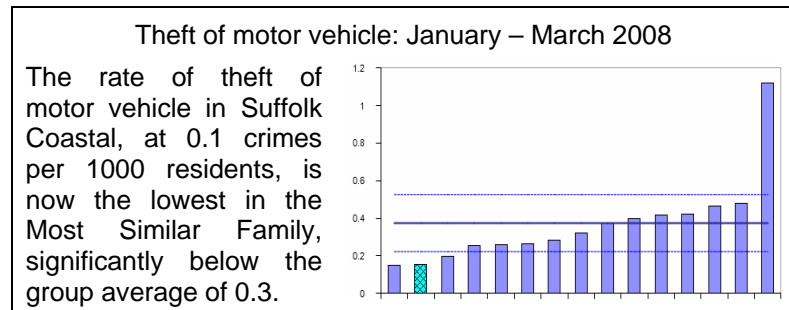
RELATED INFORMATION:

PSA1 ACHIEVEMENT: Robbery of Personal is now 35% higher than the PSA1 baseline year (2003-04).

VIAPP (Violence In A Public Place) related to alcohol has been consistently over target in Suffolk since April 2005. It has been noted that performance against this target may be affected by the issuing of Fixed Penalty Notices by the Police, in the enforcement on more minor disorder offences early in the evening, to negate more serious offending later in the evening.

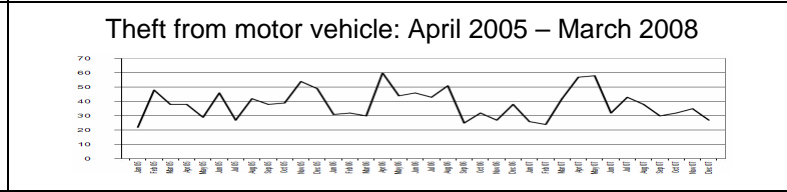
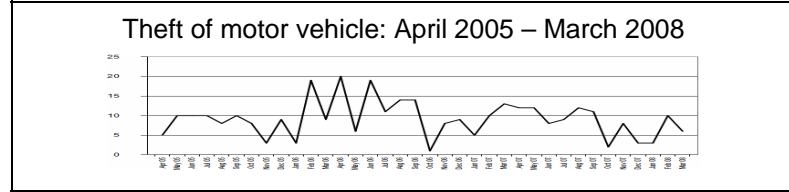
VEHICLE CRIME

Objective	Baseline	2006-07 actual & effect on target	Quarter 1 Apr-Jun 07-08	Quarter 2 July-Sept 07-08	6 months Apr-Sept 07-08	Quarter 3 Oct-Dec 07-08	9 months Apr-Dec 07-08	Quarter 4 Jan-Mar 07-08	Full year Apr-Mar 07-08
Reduce theft of a motor vehicle by 40% (54 offences) by March 2008 to 81 compared to baseline.	135 offences 2003-04	2006/07: 130 offences 37.7% reduction (49 offences) now to be achieved in 1 year.	Qtrly target 21 32 offences 11 ↑ target 13 ↓ qtr1 06-07	Qtrly target 20 32 offences 12 ↑ target 7 ↓ qtr2 06-07	6mth target 41 64 offences 23 ↑ target 20 ↓ 6mth 06-07	Qtrly target 20 13 offences 7 ↓ target 5 ↓ qtr 3 06-07	9mth target 61 77 offences 16 ↑ target 25 ↓ 9mth 06-07	Qtrly target 20 19 offences 1 ↓ target 9 ↓ qtr4 06-07	Year target 81 96 offences 15 ↑ target 34 ↓ 12mth 06-07
Reduce theft from motor vehicle by 22% (99 offences) by March 2008 to 351 compared to baseline.	450 offences 2004-05	2006/07: 458 offences 23.4% reduction (107 offences) now to be achieved in 1 year.	Qtrly target 88 147 offences 59 ↑ target 3 ↓ qtr1 06-07	Qtrly target 88 111 offences 23 ↑ target 8 ↓ qtr2 06-07	6mth target 176 258 offences 82 ↑ target 11 ↓ 6mth 06-07	Qtrly target 88 94 offences 6 ↑ target 19 ↓ qtr 3 06-07	9mth target 264 352 offences 88 ↑ target 30 ↓ 9mth 06-07	Qtrly target 87 121 offences 34 ↑ target 284 ↑ qtr4 06-07	Year target 351 96 offences 15 ↑ target 15 ↑ 12mth 06-09
Reduce vehicle interference by 35% (28 offences) by March 2008 to 53 compared to baseline.	81 offences 2004-05	2006/07: 72 offences 26.4% reduction (19 offences) now to be achieved in 1 year.	Qtrly target 14 21 offences 7 ↑ target same as qtr1 06-07	Qtrly target 13 15 offences 2 ↑ target same as qtr2 06-07	6mth target 27 36 offences 9 ↑ target same as 6mth 06-07	Qtrly target 13 9 offences 4 ↓ target 11 ↓ qtr 3 06-07	9mth target 40 45 offences 5 ↑ target 11 ↓ 9mth 06-07	Qtrly target 13 11 offences 2 ↓ target 284 ↑ qtr4 06-07	Year target 53 56 offences 3 ↑ target 16 ↓ 12mth 06-09



RELATED INFORMATION:

PSA1 ACHIEVEMENT: Suffolk Coastal CSP has achieved a 29% reduction in Theft Of Motor Vehicle offences and a 31% reduction in Vehicle Interference. Theft From Motor Vehicle offences have increased by 5%.

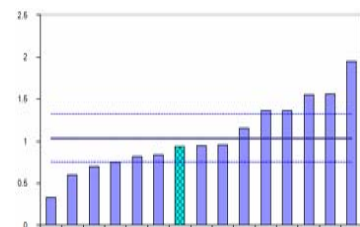


DOMESTIC BURGLARY, THEFT OF CYCLE & THEFT FROM THE PERSON

Objective	Baseline	2006-07 actual & effect on target	Quarter 1 Apr-Jun 07-08	Quarter 2 July-Sept 07-08	6 months Apr-Sept 07-08	Quarter 3 Oct-Dec 07-08	9 months Apr-Dec 07-08	Quarter 4 Jan-Mar 07-08	Full year Apr-Mar 07-08
Reduce domestic burglary by 20% (45 offences) by March 2008 to 182 compared to baseline.	227 offences 2003-04	2006/07: 207 offences 12.1% reduction (25 offences) now to be achieved in 1 year.	Qtrly target 46 50 offences 4 ↑ target 3 ↓ qtr1 06-07	Qtrly target 46 52 offences 6 ↑ target 16 ↓ qtr2 06-07	6mth target 92 102 offences 10 ↑ target 19 ↓ 6mth 06-07	Qtrly target 45 70 offences 25 ↑ target 25 ↑ qtr3 06-07	9mth target 137 172 offences 35 ↑ target 6 ↑ 9 mth 06-07	Qtrly target 45 48 offences 3 ↑ target 13 ↑ qtr4 06-07	Year target 182 220 offences 38 ↑ target 10 ↑ 12mth 06-09
Reduce theft of a cycle by 10% (26 offences) by March 2008 to 238 compared to baseline.	264 offences 2004-05	2006/07: 259 offences 8.1% reduction (21 offences) now to be achieved in 1 year.	Qtrly target 60 77 offences 17 ↑ target 21 ↑ qtr1 06-07	Qtrly target 60 77 offences 17 ↑ target 25 ↓ qtr2 06-07	6mth target 120 154 offences 34 ↑ target 4 ↓ 6mth 06-07	Qtrly target 59 52 offences 7 ↓ target 5 ↓ qtr3 06-07	9mth target 179 206 offences 27 ↑ target 9 ↓ 9 mth 06-07	Qtrly target 59 35 offences 13 ↓ target 9 ↓ qtr4 06-07	Year target 238 241 offences 3 ↑ target 18 ↓ 12mth 06-09
Reduce theft from the person by 0% by March 2008 to 40 compared to baseline.	40 offences 2004-05	2006/07: 74 offences 46.0% reduction (34 offences) now to be achieved in 1 year.	Qtrly target 10 9 offences 1 ↓ target 8 ↓ qtr1 06-07	Qtrly target 10 17 offences 7 ↑ target 11 ↓ qtr2 06-07	6mth target 20 26 offences 6 ↑ target 19 ↓ 6mth 06-07	Qtrly target 10 13 offences 3 ↑ target same as qtr3 06-07	9mth target 30 39 offences 9 ↑ target 19 ↓ 9 mth 06-07	Qtrly target 10 12 offences 2 ↑ target 4 ↓ qtr4 06-07	Year target 40 41 offences 1 ↑ target 23 ↓ 12mth 06-09

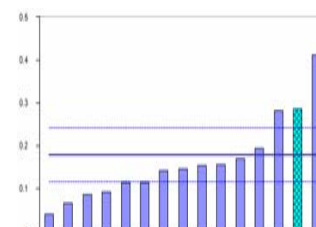
Domestic burglary January – March 2008

Suffolk Coastal has moved from fifth to seventh lowest in the Most Similar Family with a rate of 0.9, above the Family average of 1.03 crimes per 1000 residents.



Theft of cycle: January – March 2008

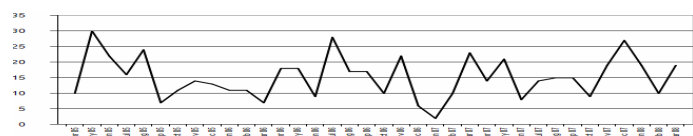
The rate of theft of cycles in Suffolk Coastal, at 0.28 crimes per 1000 residents, is significantly higher than the Most Similar Family average of 0.17 and has fallen from second to third highest in the group.



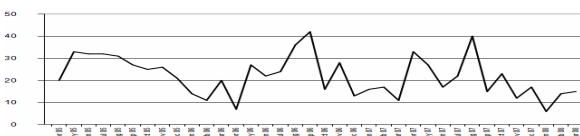
RELATED INFORMATION:

PSA1 ACHIEVEMENT: Suffolk Coastal CSP have achieved a 9% reduction in Theft Of Pedal Cycle offences although Burglary Dwelling has increased by 1% when compared with the baseline year.

Domestic Burglary: April 2005 – March 2008



Theft of cycle: January April 2005 – March 2008



SUFFOLK COASTAL 2007-08. BCS target % reduction: 12.5%

ANTI-SOCIAL BEHAVIOUR

Objective	Baseline	Basket of indicators	Quarter 1 Apr-Jun 07-08	Quarter 2 July-Sept 07-08	6 months Apr-Sept 07-08	Quarter 3 Oct-Dec 07-08	9 months Apr-Dec 07-08	Quarter 4 Jan-Mar 07-08	Full year Apr-Mar 07-08
Reduce ASB by 5% by March 2008	16 incidents 2005-06	Reduce intimidation / threats to neighbours by 5% (1 incident) by March 2008 to 15. 2006/07: 33 incidents	Qtrly target 3 9 incidents 6 ↑ target same as qtr1 06-07	Qtrly target 4	6mth target 7	Qtrly target 4	9mth target 11	Qtrly target 4	Year target 15
Reduce ASB by 5% by March 2008	21 incidents 2005-06	Reduce graffiti by 5% (1 incident) by March 2008 to 20. 2006/07: 19 incidents	Qtrly target 5 4 incidents 1 ↓ target 1 ↓ qtr1 06-07	Qtrly target 5	6mth target 10	Qtrly target 5	9mth target 15	Qtrly target 5	Year target 20
Reduce ASB by 5% by March 2008	600 incidents 2005-06	Reduce noise nuisance (domestic) by 5% (30 incidents) by March 2008 to 570. 2006/07: 658 incidents	Qtrly target 143 94 incidents 49 ↓ target 104 ↓ qtr1 06-07	Qtrly target 143	6mth target 286	Qtrly target 142	9mth target 428	Qtrly target 142	Year target 570
Reduce ASB by 5% by March 2008	46 incidents 2005-06	Reduce intimidating behaviour / street drinking by groups of youths by 5% (2 incidents) by March 2008 to 44. 2006/07: 59 incidents	Qtrly target 11 15 incidents 4 ↑ target 10 ↓ qtr1 06-07	Qtrly target 11	6mth target 22	Qtrly target 11	9mth target 33	Qtrly target 11	Year target 44
Reduce ASB by 5% by March 2008	382 incidents 2005-06	Reduce abandoned vehicles by 5% (19 incidents) by March 2008 to 363. 2006/07: 276 incidents	Qtrly target 91 67 incidents 24 ↓ target 3 ↓ qtr1 06-07	Qtrly target 91	6mth target 182	Qtrly target 91	9mth target 273	Qtrly target 90	Year target 363
Reduce the number of people who perceive ASB as a problem to 3% by March 2008	9.3% BCS Dec 2004	Sept 2006: 10.3% 7.3% pts reduction now to be achieved in 1 year.	7.9% March 2007	6.9% June 2007	6.4% September 2007	7.7% December 2007			

SUFFOLK COASTAL 2007-08. BCS target % reduction: 12.5%

DOMESTIC VIOLENCE, RACIAL HARASSMENT, SECTION 17 & DAAT

Objective	Baseline	2006/07 & effect on target	Quarter 1 Apr-Jun 07-08	Quarter 2 July-Sept 07-08	Quarter 3 Oct-Dec 07-08	Quarter 4 Jan-Mar 07-08
Reduce the rate of repeat domestic violence offending by 5% by March 2008 to 36.0% across the county	37.9% 2004-05	2006-07: 41.0% Means 5%pt reduction now to be achieved in 1 year.	Qtrly target 39.0% 39.9% of incidents 0.9% pts ↑ target	Qtrly target 38.0% 27.6% of incidents 10.4% pts ↓ target	Qtrly target 37.0% 29.3% of incidents 7.7% pts ↓ target	Qtrly target 36.0% 27.1% of incidents 8.9% pts ↓ target
Reduce the proportion of domestic violence incidents reported to the Police where alcohol was a factor by 10% by March 2008 to 38.3% across the county (DV alc project worker in post 09/06)	42.6% 2004-05	2006-07: 43.3% Means 5%pt reduction now to be achieved in 1 year.	Qtrly target 40.5% 39.9% of incidents 0.6% pts ↓ target	Qtrly target 39.8% 41.1% of incidents 1.3% pts ↑ target	Qtrly target 38.8% 43.6% of incidents 4.8% pts ↑ target	Qtrly target 38.3% 35.2% of incidents 3.1% pts ↓ target
The number of racial harassment incidents reported to the Racial Harassment Initiative in Suffolk Coastal		2006-07: 36 incidents	6 Incidents	12 Incidents	15 Incidents	
Increase awareness of the responsibilities under Section 17 to take account of community safety in all local authority work						
Reduce the proportion of BCS respondents who perceive that people using or dealing drugs are a very or fairly big problem in their local area to 15% across the county by March 2008	17.5% March 2005	Sept 2006: 13.9% On target	14.3% March 2007	13.3% June 2007	15.4% September 2007	15.7% December 2007
Increase drug and alcohol awareness/education in the local community to 25 events by March 2007.	20 events 2003-04	2006-07: 18 events Means 7 more events must be hosted before March 2008	No events (Educator in post June 2007)	2 events	11 Events	5 Events

SUFFOLK COASTAL 2007-08. BCS target % reduction: 12.5%

Objective	Baseline March 2006		Snapshot for Coastal PPO area for June 2007:		Snapshot for Coastal PPO area for Sept 2007:		Snapshot for Coastal PPO area for Dec 2007:		Snapshot for Coastal PPO area for March 2008:	
To maintain an effective Prolific and other Priority Offenders Scheme.	A	0	A	8	A	8	A	8	A	
	B	0	B	0	B	1	B	1	B	
	C	0	C	1	C	0	C	1	C	
	D	0	D	9	D	4	D	8	D	
	E	0	E	23	E	16	E	22	E	
	F	13	F	0	F	2	F	1	F	
	G1	0	G1	15	G1	22	G1	20	G1	
	G2	0	G2	3	G2	1	G2	0	G2	
	Total	13	Total	59	Total	54	Total	61	Total	

Coastal PPO area covers Suffolk Coastal and Waveney CSP areas

Key to the position of PPOs on the PPO journey:

KEY FROM DECEMBER 2005	
A	At liberty and subject only to basic monitoring
B	At liberty and subject to a voluntary rehabilitative intervention
C	At liberty and subject to proactive targeting by the police
D	In the criminal justice system (arrest to sentence)
E	Under active supervision in the community
F	Subject to enforcement proceedings
G1	In custody - sentence
G2	In custody - remand

Force Overview Report - Suffolk and CDRPs
Crimes
Data To The End Of Mar 08

Force/CDRP	All Crime	BCS Comparator	Domestic Burglary	Vehicle Crime (exc Veh Interference)	Robbery	Violent Crime
Suffolk						
Babergh						
Forest Heath						
Ipswich						
Mid Suffolk						
St Edmundsbury						
Suffolk Coastal						
Waveney						

Key to Performance Comparisons

Across Time - Shape

▲ Clearly Improving ▲ Improving
 ◇ No apparent change
 ▼ Clearly Deteriorating ▼ Deteriorating

Against Peers - Ladder

Better than
 In line with peers
 Worse than

Based on Significant Change **Based on last 3 months**

Click on the ladder to view corresponding charts