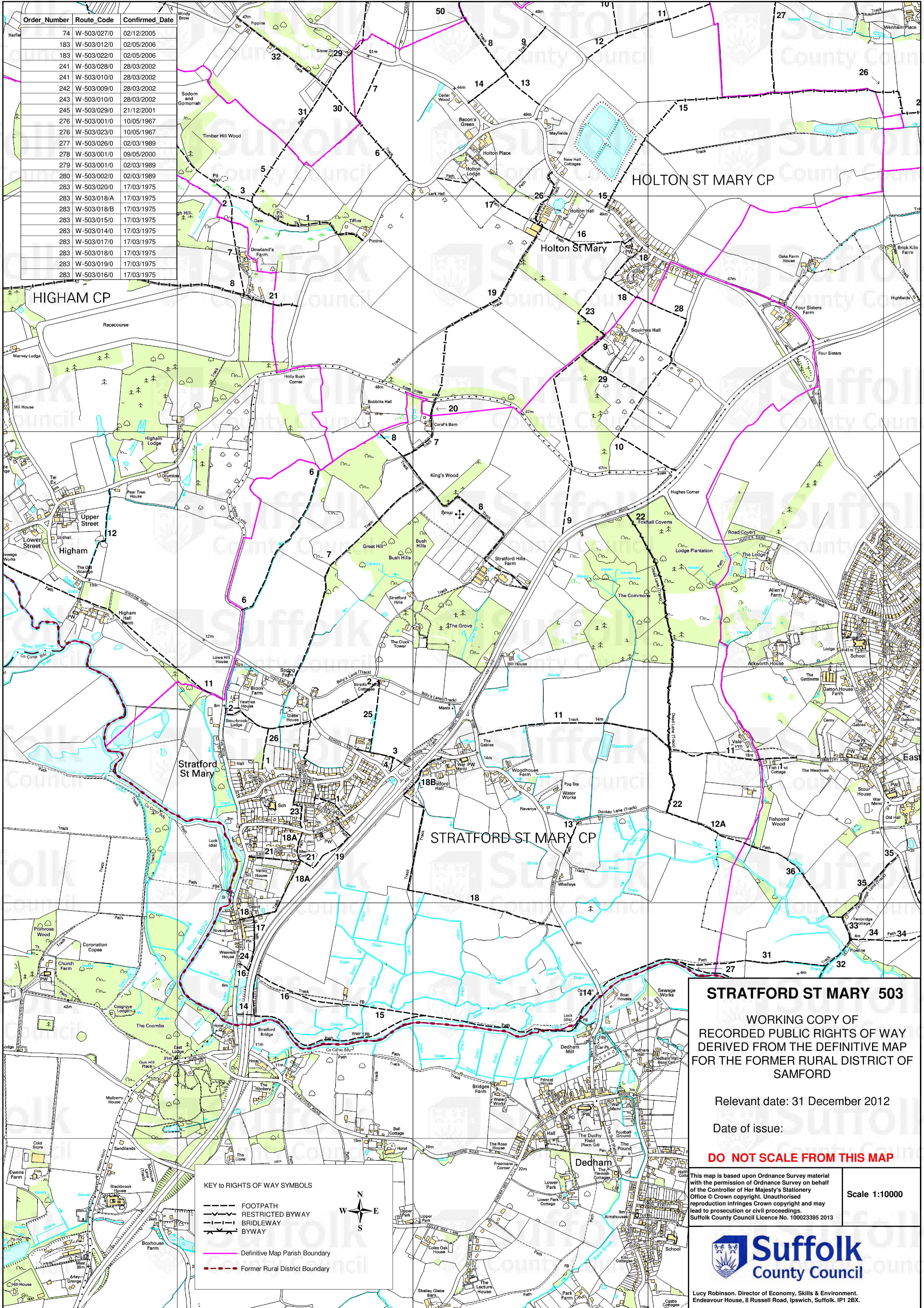


Order Number	Route Code	Confirmed Date
74	W-503/027/0	02/12/2005
183	W-503/012/0	02/05/2006
183	W-503/022/0	02/05/2006
241	W-503/028/0	28/03/2002
241	W-503/010/0	28/03/2002
242	W-503/009/0	28/03/2002
243	W-503/010/0	28/03/2002
245	W-503/029/0	21/12/2001
276	W-503/001/0	10/05/1967
276	W-503/023/0	10/05/1967
277	W-503/026/0	02/03/1989
278	W-503/001/0	09/05/2000
279	W-503/001/0	02/03/1989
280	W-503/002/0	02/03/1989
283	W-503/020/0	17/03/1975
283	W-503/018/A	17/03/1975
283	W-503/018/B	17/03/1975
283	W-503/015/0	17/03/1975
283	W-503/014/0	17/03/1975
283	W-503/017/0	17/03/1975
283	W-503/018/0	17/03/1975
283	W-503/019/0	17/03/1975
283	W-503/016/0	17/03/1975



HOLTON ST MARY CP

HIGHAM CP

STRATFORD ST MARY CP

STRATFORD ST MARY 503

WORKING COPY OF
 RECORDED PUBLIC RIGHTS OF WAY
 DERIVED FROM THE DEFINITIVE MAP
 FOR THE FORMER RURAL DISTRICT OF
 SAMFORD

Relevant date: 31 December 2012

Date of issue:

DO NOT SCALE FROM THIS MAP

KEY TO RIGHTS OF WAY SYMBOLS

- FOOTPATH
- RESTRICTED BYWAY
- BRIDLEWAY
- BYWAY
- Definitive Map Parish Boundary
- Former Rural District Boundary



This map is based upon Ordnance Survey material with the permission of Ordnance Survey on behalf of the Controller of Her Majesty's Stationery Office © Crown copyright. Unauthorised reproduction infringes Crown copyright and may lead to prosecution or civil proceedings. Suffolk County Council Licence No. 100023395 2013

Scale 1:10000



Lucy Robinson, Director of Economy, Skills & Environment.
 Endeavour House, 8 Russell Road, Ipswich, Suffolk, IP1 2BX.