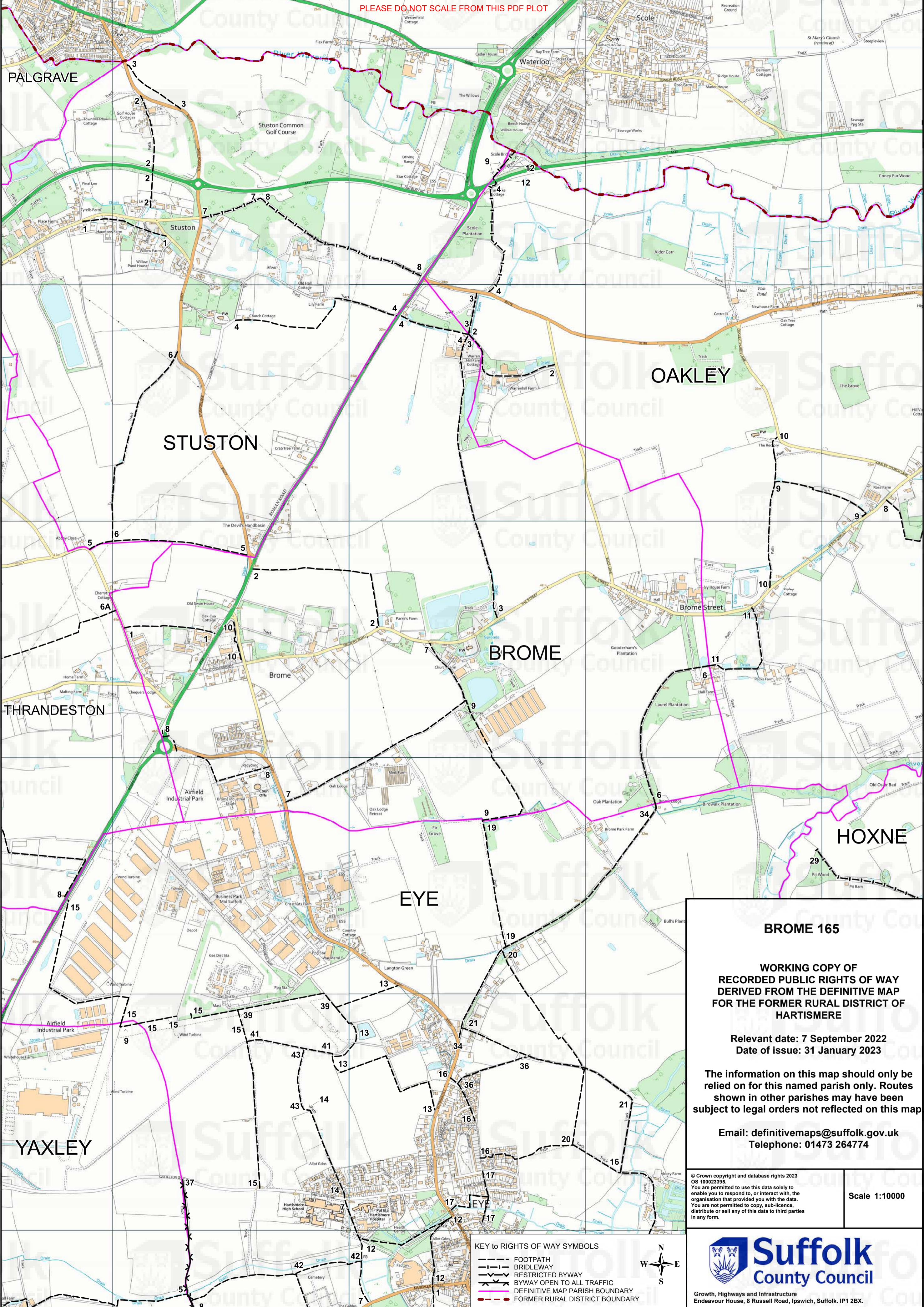


PLEASE DO NOT SCALE FROM THIS PDF PLOT



BROME 165

WORKING COPY OF RECORDED PUBLIC RIGHTS OF WAY DERIVED FROM THE DEFINITIVE MAP FOR THE FORMER RURAL DISTRICT OF HARTISMERE

Relevant date: 7 September 2022
Date of issue: 31 January 2023

The information on this map should only be relied on for this named parish only. Routes shown in other parishes may have been subject to legal orders not reflected on this map

Email: definitivemaps@suffolk.gov.uk
Telephone: 01473 264774

© Crown copyright and database rights 2023
OS 100023395
You are permitted to use this data solely to enable you to respond to, or interact with, the organisation that provided you with the data. You are not permitted to copy, sub-licence, distribute or sell any of this data to third parties in any form.

Scale 1:10000

- KEY to RIGHTS OF WAY SYMBOLS**
- FOOTPATH
 - BRIDLEWAY
 - RESTRICTED BYWAY
 - BYWAY OPEN TO ALL TRAFFIC
 - DEFINITIVE MAP PARISH BOUNDARY
 - FORMER RURAL DISTRICT BOUNDARY



Suffolk
County Council

Growth, Highways and Infrastructure
Endeavour House, 8 Russell Road, Ipswich, Suffolk. IP1 2BX.