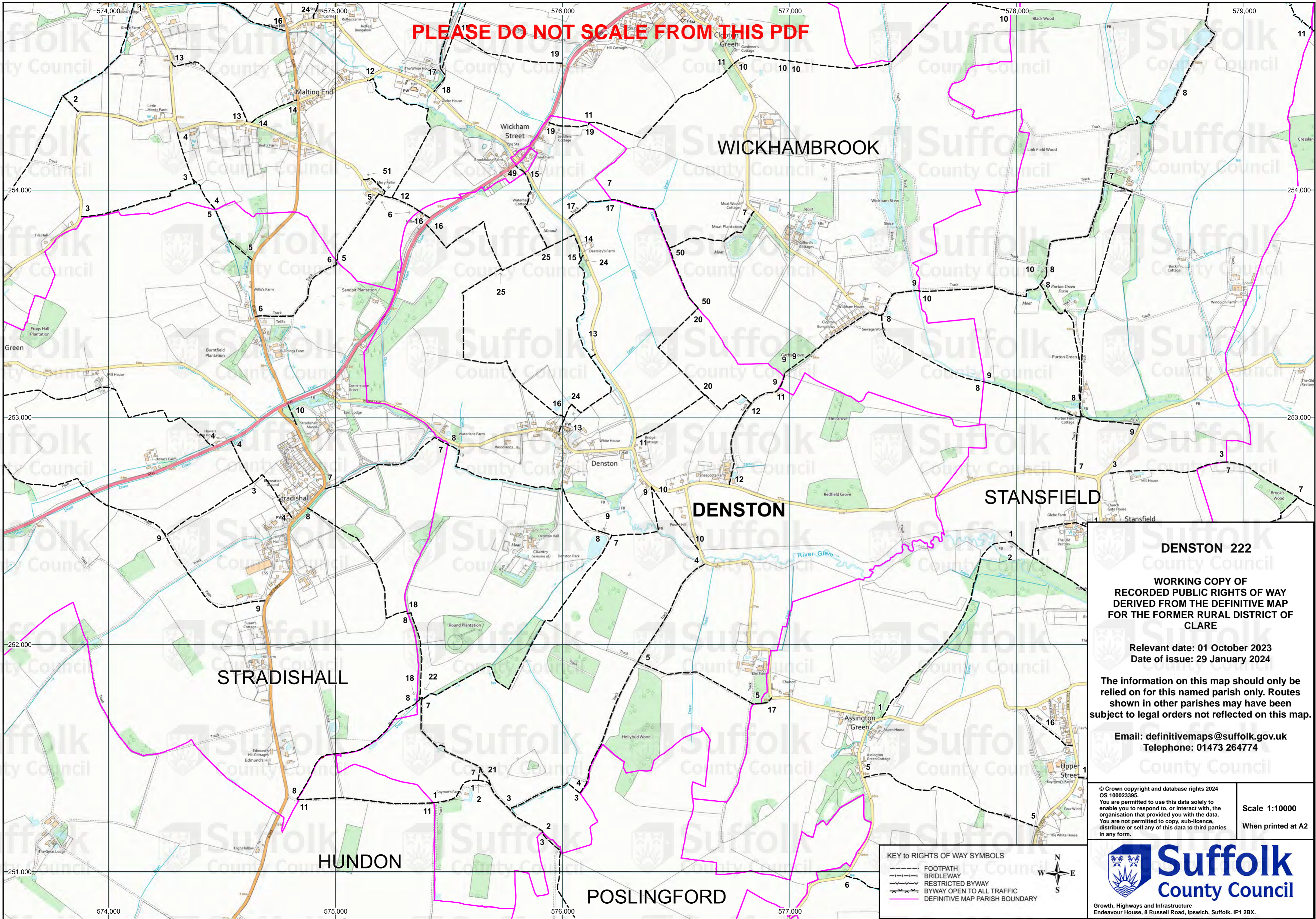


**PLEASE DO NOT SCALE FROM THIS PDF**



**DENSTON 222**

WORKING COPY OF  
RECORDED PUBLIC RIGHTS OF WAY  
DERIVED FROM THE DEFINITIVE MAP  
FOR THE FORMER RURAL DISTRICT OF  
CLARE

Relevant date: 01 October 2023  
Date of issue: 29 January 2024

The information on this map should only be  
relied on for this named parish only. Routes  
shown in other parishes may have been  
subject to legal orders not reflected on this map.

Email: [definitivemaps@suffolk.gov.uk](mailto:definitivemaps@suffolk.gov.uk)  
Telephone: 01473 264774

KEY to RIGHTS OF WAY SYMBOLS

	FOOTPATH
	BRIDLEWAY
	RESTRICTED BYWAY
	BYWAY OPEN TO ALL TRAFFIC
	DEFINITIVE MAP PARISH BOUNDARY



© Crown copyright and database rights 2024  
OS 100023395.

You are permitted to use this data solely to  
enable you to respond to, or interact with, the  
organisation that provided you with the data.  
You are not permitted to copy, sub-licence,  
distribute or sell any of this data to third parties  
in any form.

Scale 1:10000  
When printed at A2

**Suffolk**  
County Council

Growth, Highways and Infrastructure  
Endeavour House, 8 Russell Road, Ipswich, Suffolk. IP1 2BX.